



# HP EliteBook x360 1030 G3 Wireless Card Replacement

This guide shows how to replace the wireless card in your HP EliteBook x360 1030 G3.

Written By: Shea Charkowsky



---

## INTRODUCTION

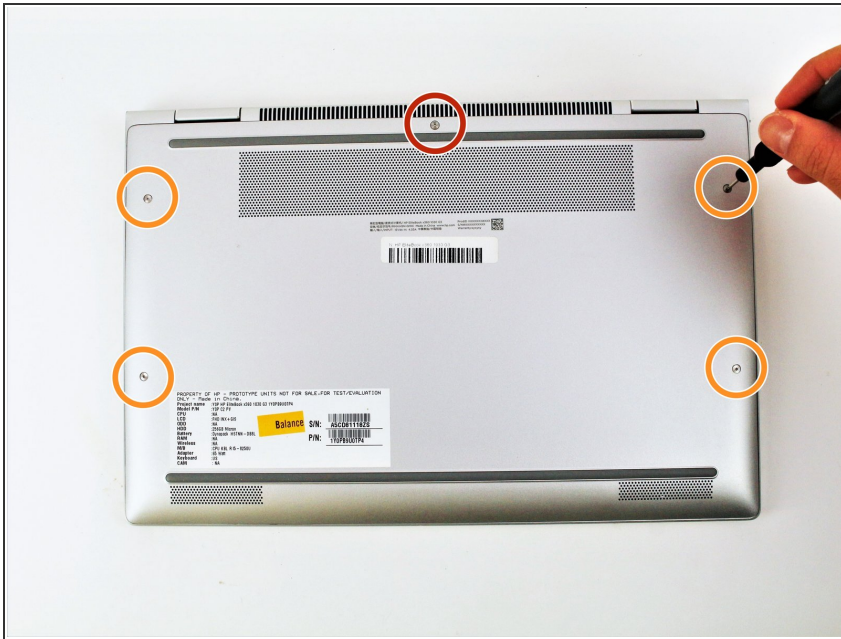
This guide shows how to remove the wireless card from your laptop.



### TOOLS:

- [Phillips #00 Screwdriver](#) (1)
  - [T5 Torx Screwdriver](#) (1)
-

## Step 1 — Bottom Cover



- ❗ Be sure to power off and unplug your device before you begin your repair.
- Close the laptop and flip it so that the screen is on the surface of the table and the back plate is facing you.
- Remove the 3.3 mm screw near the top of the hinge using a T5 Torx screwdriver.
- Remove the remaining four 7.3 mm screws using the same screwdriver.

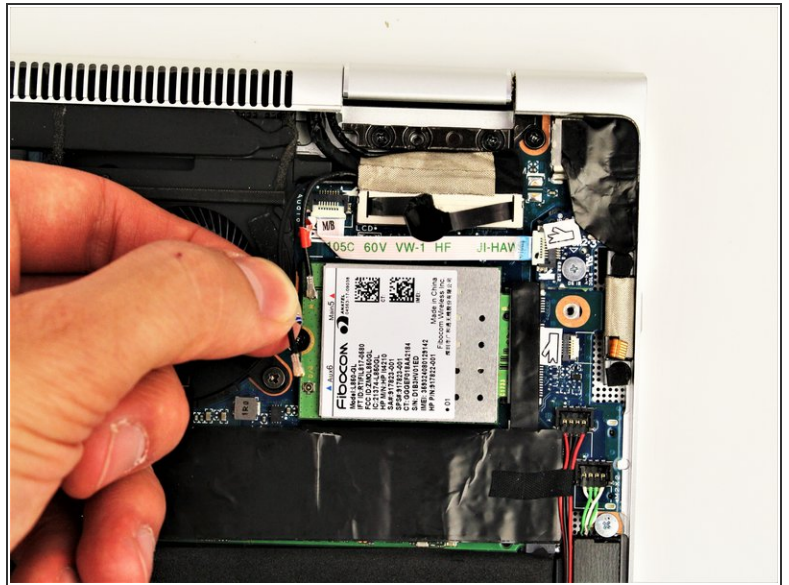
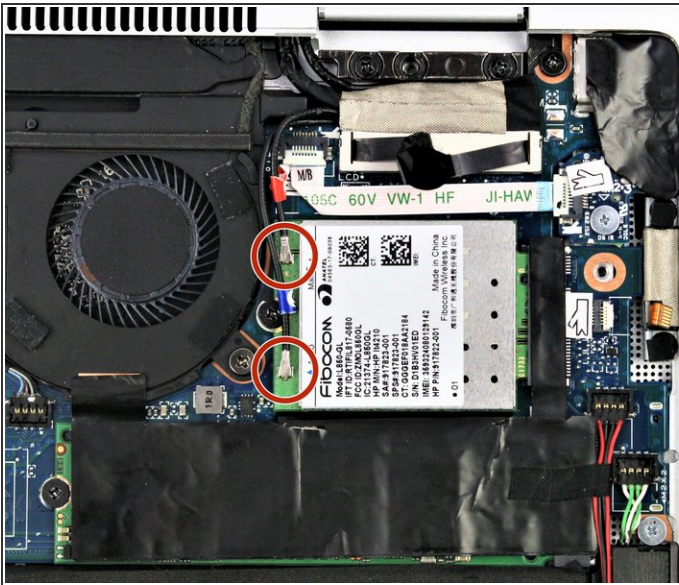
## Step 2



- Separate the bottom cover from the laptop, starting from the upper corner and working your way around the edge.
- ❗ *The plastic fastening may make cracking sounds when separating, but this is normal.*



## Step 3 — Wireless Card



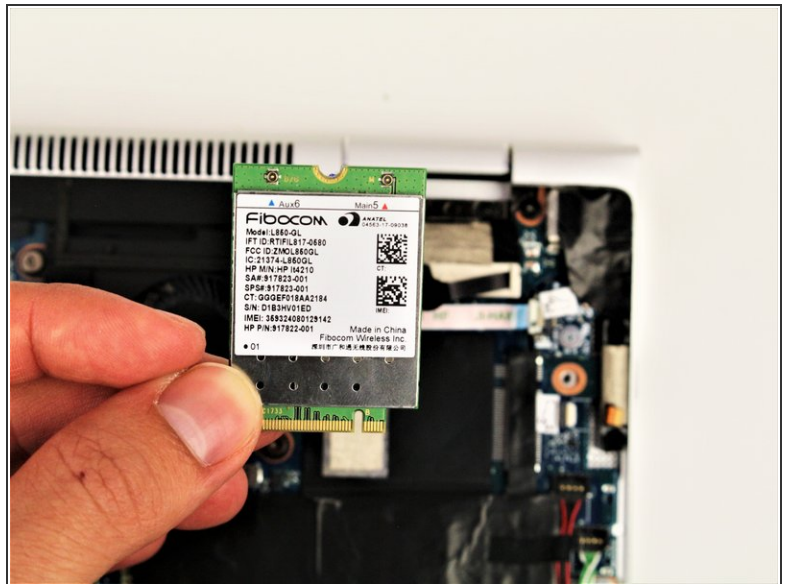
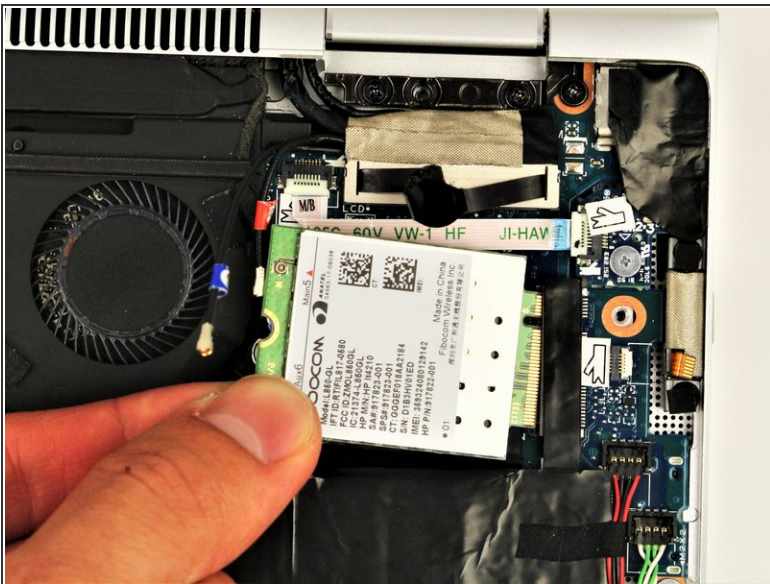
- Detach the small wires connected to the card by lifting the ends straight upward. The wires are held in place by friction and should pop right off.
- ⓘ *These wires should be handled carefully since they're the Wi-Fi and Bluetooth antennas.*
- ⓘ *Take note of which wire goes where, as mixing these cables will cause both Wi-Fi and Bluetooth to stop working.*

## Step 4



- Remove the 2.4 mm screw holding the card down using a Phillips #00 screwdriver.

## Step 5



- Carefully pull out the card by sliding it to the left.

To reassemble your device, follow these instructions in reverse order.