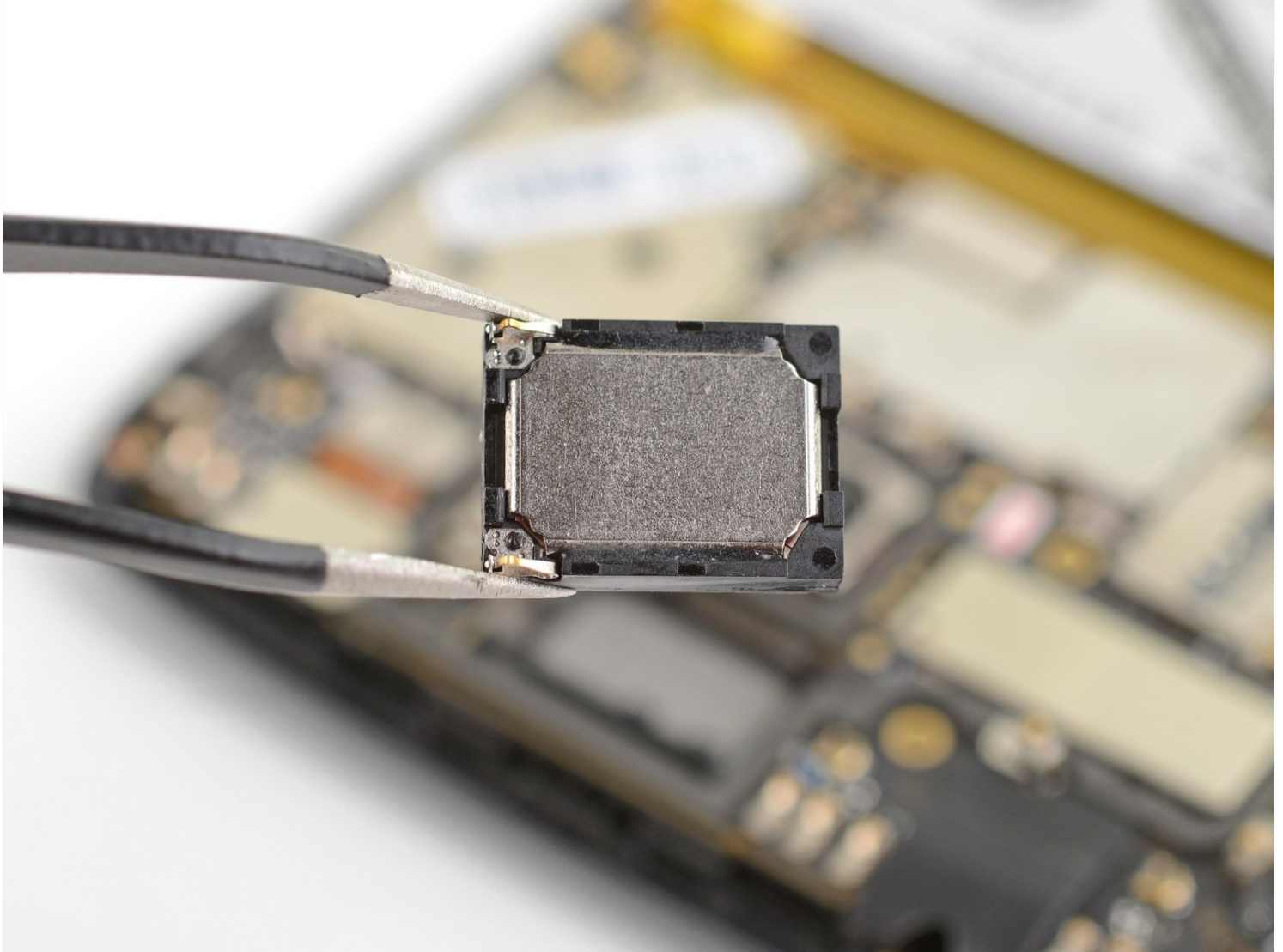




Motorola Moto E4 Plus Earpiece Speaker Replacement

Follow this guide to remove and replace a...

Written By: Arthur Shi



INTRODUCTION

Follow this guide to remove and replace a damaged earpiece speaker for the Moto E4 Plus.

Before you begin, download the [Rescue and Smart Assistant](#) app to backup your device and diagnose whether your problem is software or hardware related.

TOOLS:

[T3 Torx Screwdriver](#) (1)

[Spudger](#) (1)

Step 1 — Remove the back cover



 Power off your phone before beginning disassembly.

- Insert the edge of the spudger into the notch on the bottom right corner of the phone.
- Twist the spudger to start releasing the back cover from the phone.
- Slide the spudger along the bottom edge to separate the back cover from the phone.

Step 2



- Lift the phone unit out of the back cover.

Step 3 — Remove the midframe screws



- Remove the nineteen 3.2 mm long T3 screws securing the plastic midframe.

Step 4 — Release the midframe clips



i The plastic midframe is still held in place with clips.

- Insert the flat end of a spudger into the midframe seam at the bottom left corner of the phone (near the microphone hole).
- Twist the spudger to release the plastic clip.
- Repeat the process for the clip near the top right corner of the phone.

Step 5 — Remove the midframe



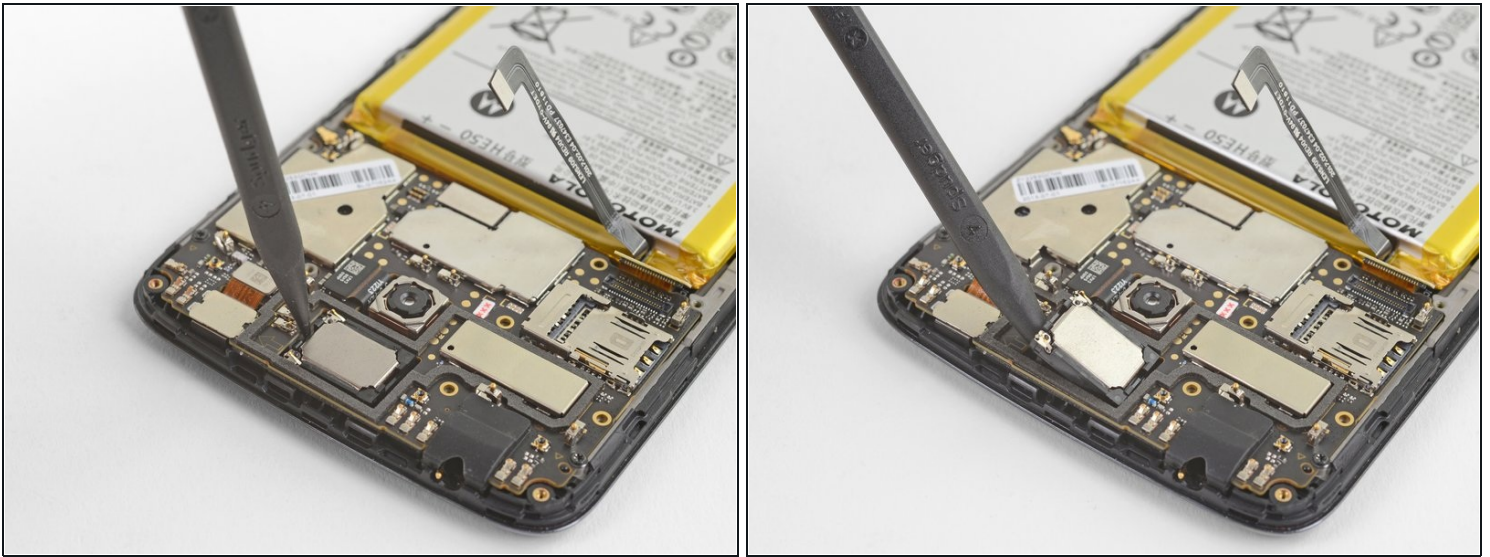
- Lift the bottom edge of the plastic midframe upwards until the clips along the top edge release.
 - Remove the plastic midframe.
- ☒ To reattach the plastic midframe, line up the midframe to the phone and squeeze along the edges to engage the clips.

Step 6 — Disconnect the battery



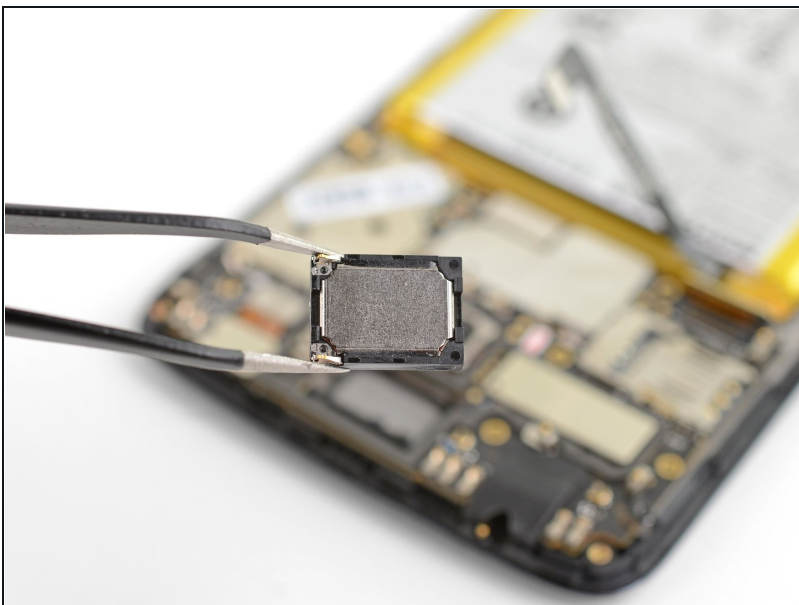
- Use the point of a spudger to pry up and disconnect the battery connector from its motherboard socket.

Step 7 — Loosen the earpiece speaker



- Insert the point of a spudger in the crevice along the right edge of the earpiece speaker.
- Gently pry up to loosen the earpiece speaker from its recess.

Step 8 — Remove the earpiece speaker



- Remove the earpiece speaker.
- ☑ When you install a replacement module, be sure to orient it properly. The side with the two corner springs should face towards the front-facing camera module.

To reassemble your device, follow these instructions in reverse order.

Repair didn't go as planned? Try some [basic troubleshooting](#), or ask our [Moto E4 Plus Answers community](#) for help.