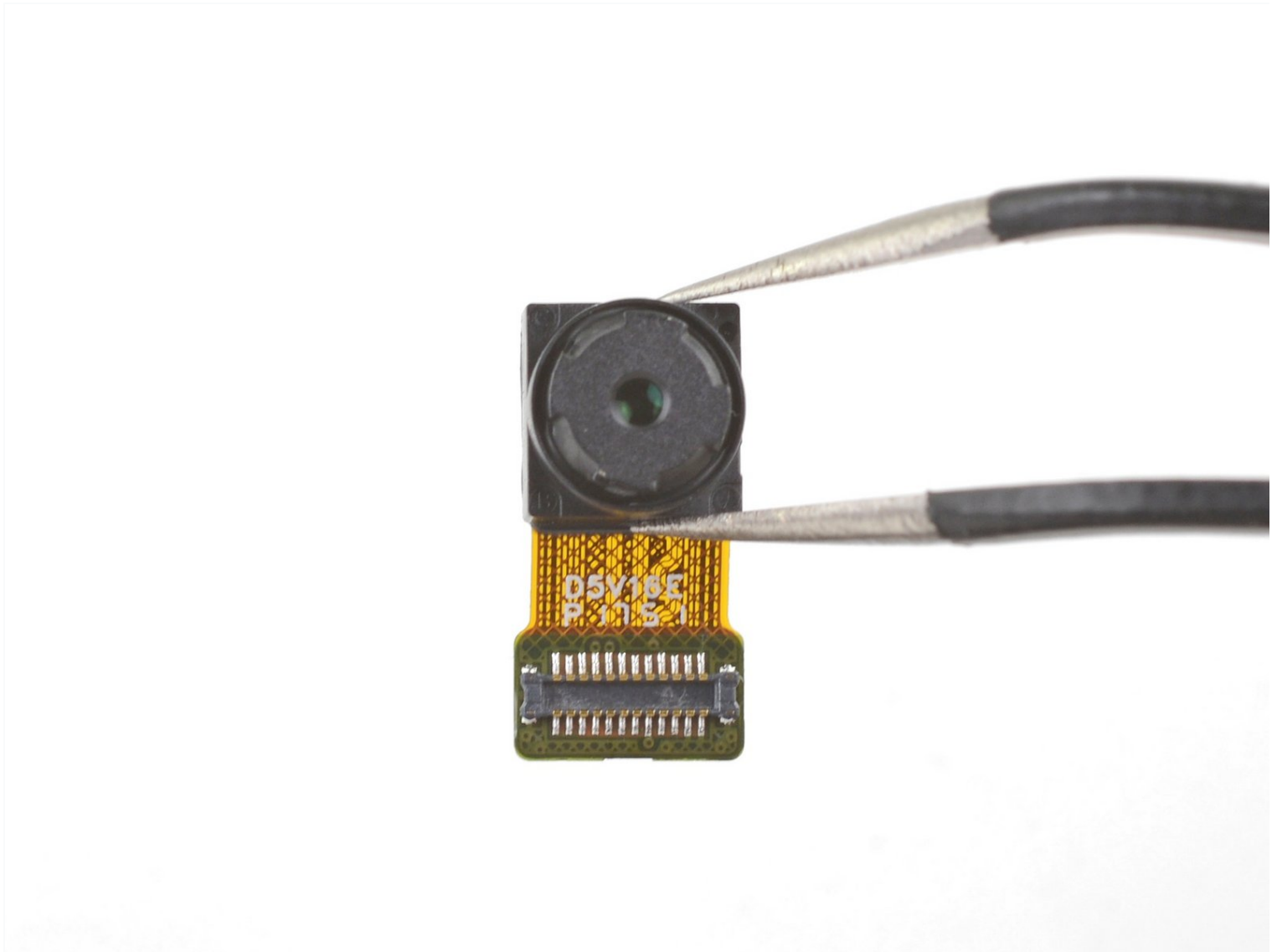


# Motorola Moto E4 Plus Front-Facing Camera Replacement

Follow this guide to remove and replace the...

Written By: Arthur Shi



# INTRODUCTION

Follow this guide to remove and replace the front-facing camera module for the Moto E4 Plus. You will have to remove the motherboard in order to access the camera module.

Before you begin, download the [Rescue and Smart Assistant](#) app to backup your device and diagnose whether your problem is software or hardware related.

---

## TOOLS:

[T3 Torx Screwdriver](#) (1)

[Spudger](#) (1)

---

### Step 1 — Remove the back cover



 Power off your phone before beginning disassembly.

- Insert the edge of the spudger into the notch on the bottom right corner of the phone.
- Twist the spudger to start releasing the back cover from the phone.
- Slide the spudger along the bottom edge to separate the back cover from the phone.

## Step 2



- Lift the phone unit out of the back cover.

## Step 3 — Remove the midframe screws



- Remove the nineteen 3.2 mm long T3 screws securing the plastic midframe.

## Step 4 — Release the midframe clips



**i** The plastic midframe is still held in place with clips.

- Insert the flat end of a spudger into the midframe seam at the bottom left corner of the phone (near the microphone hole).
- Twist the spudger to release the plastic clip.
- Repeat the process for the clip near the top right corner of the phone.

## Step 5 — Remove the midframe



- Lift the bottom edge of the plastic midframe upwards until the clips along the top edge release.
  - Remove the plastic midframe.
- ☒ To reattach the plastic midframe, line up the midframe to the phone and squeeze along the edges to engage the clips.



## Step 6 — Disconnect the battery



- Use the point of a spudger to pry up and disconnect the battery connector from its motherboard socket.

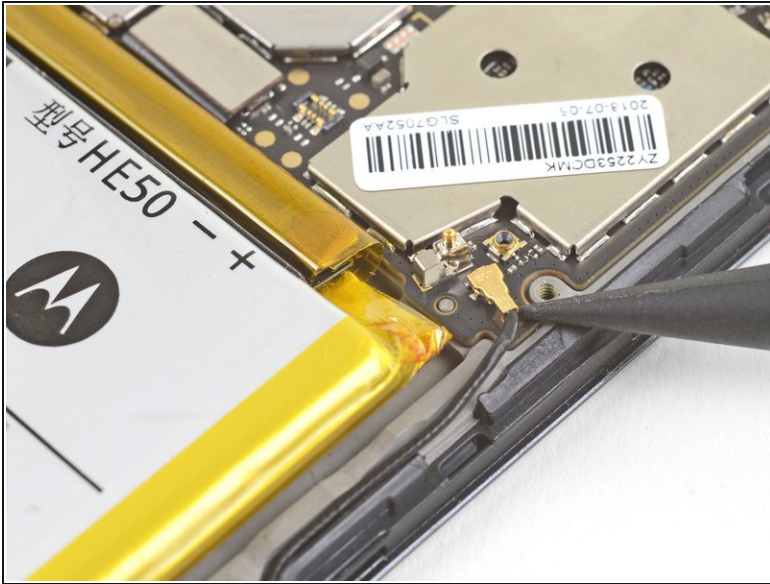
## Step 7 — Disconnect the display cable



- Use the point of a spudger to pry up and disconnect the display cable from its motherboard socket, near the bottom left corner of the motherboard.



## Step 8 — Disconnect the antenna cable



- Use the point of a spudger to pry up and disconnect the antenna cable from its motherboard socket.

## Step 9 — Disconnect the interconnect cable



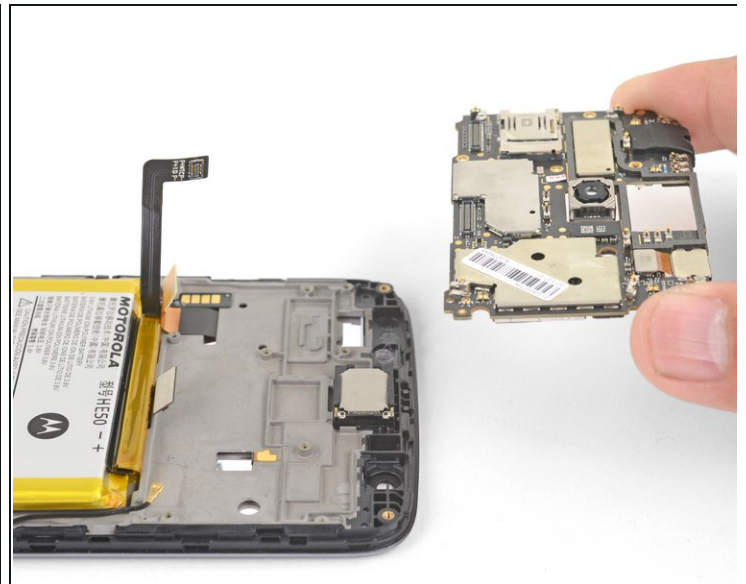
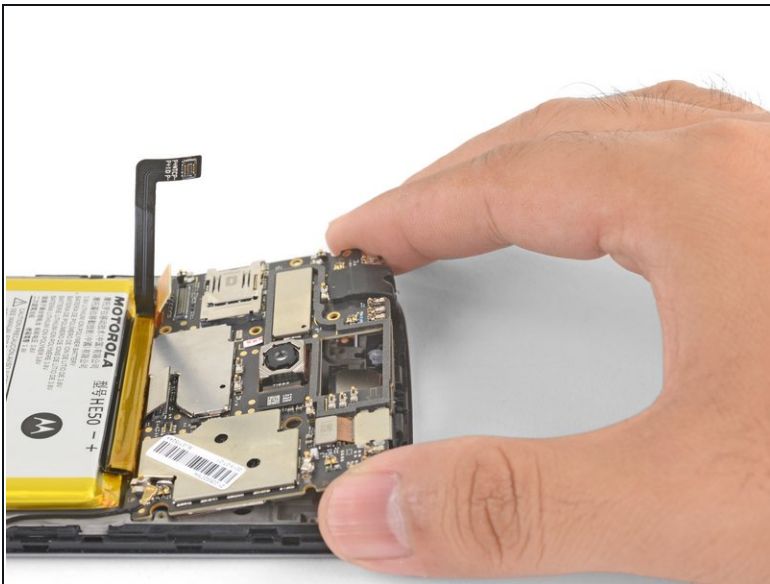
- Use the point of a spudger to pry up and disconnect the interconnect cable from its motherboard socket.

## Step 10 — Remove the motherboard screws



- Remove the two black 3.2 mm long T3 screws securing the motherboard.

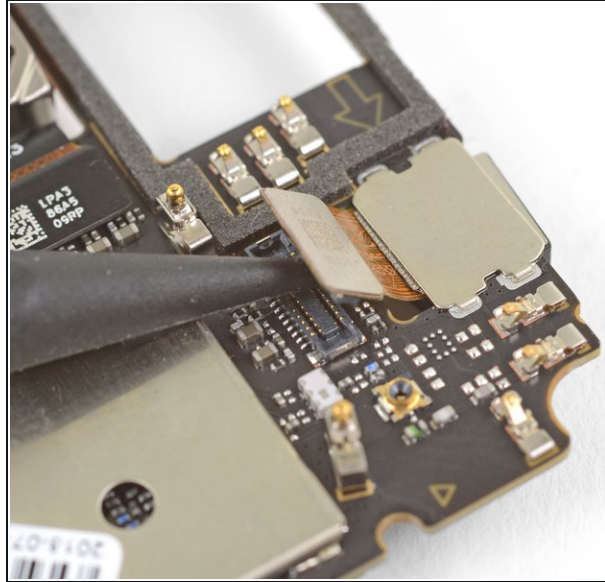
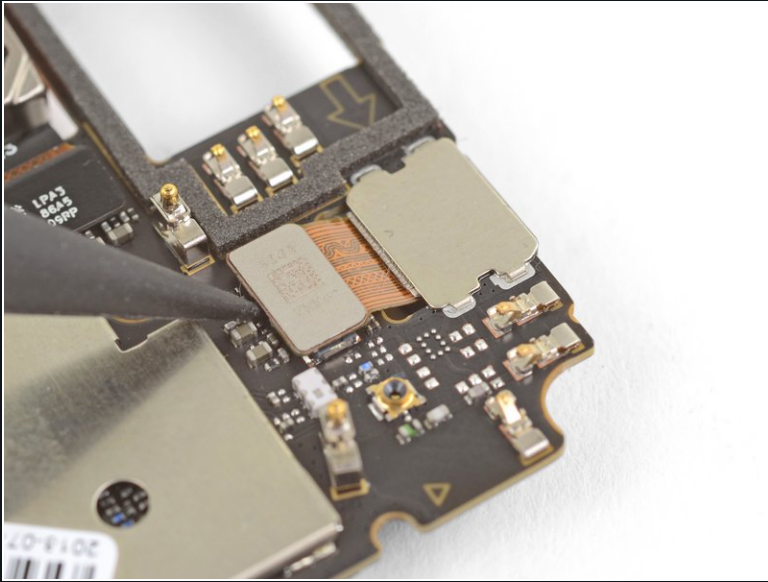
## Step 11 — Remove the motherboard



- Grasp the motherboard by the top corners and lift it out of the phone.
- Remove the motherboard.

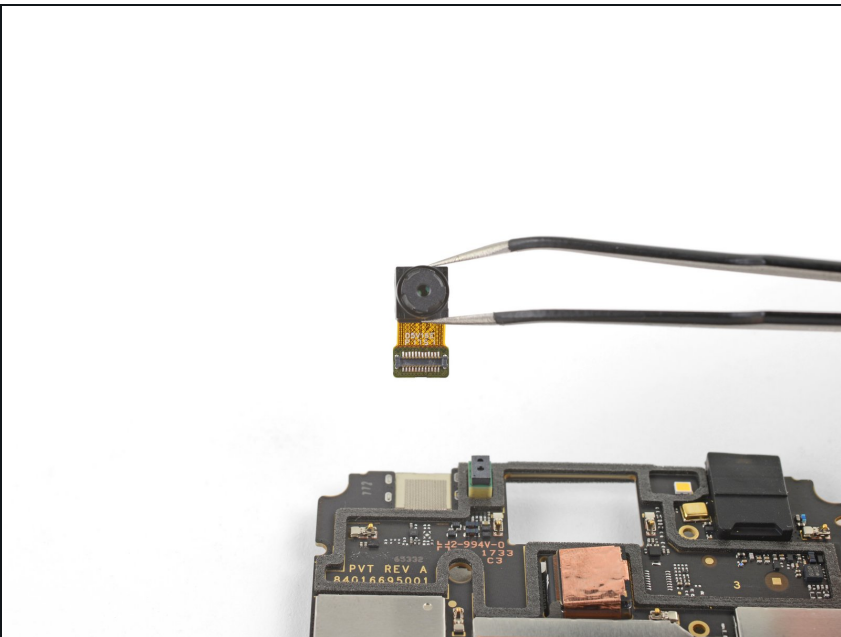


## Step 12 — Disconnect the front-facing camera



- Use the point of a spudger to pry up and disconnect the front-facing camera from its motherboard socket.

## Step 13 — Remove the front-facing camera



- Flip the motherboard over.
- Remove the front-facing camera.

---

To reassemble your device, follow these instructions in reverse order.

Repair didn't go as planned? Try some [basic troubleshooting](#), or ask our [Moto E4 Plus Answers community](#) for help.