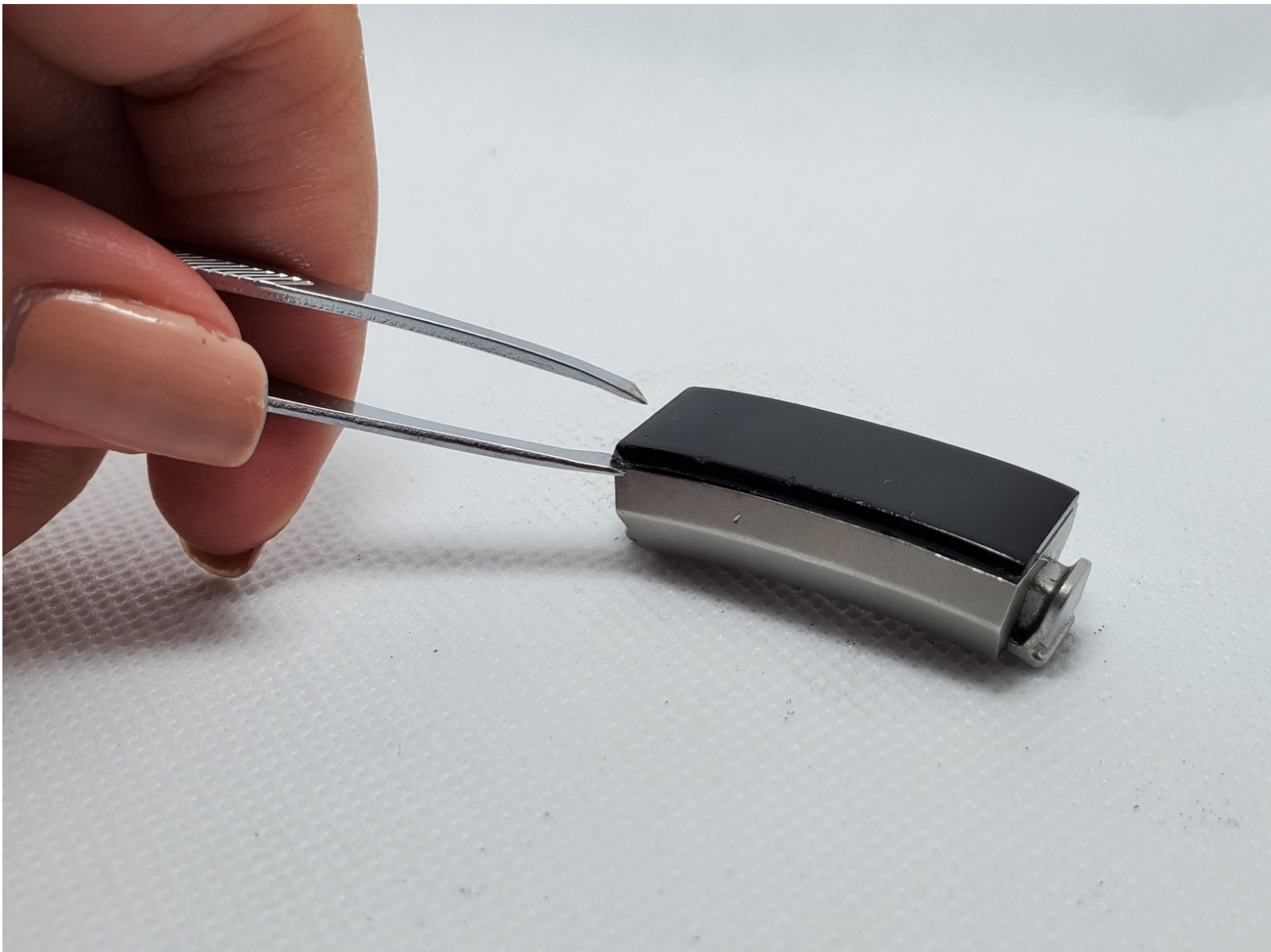




# Fitbit Alta Battery Replacement

How to replace a Fitbit Alta battery that no longer holds a charge.

Written By: Benjamin Hufendick



## INTRODUCTION

This guide will help you replace a Fitbit Alta battery. If you have let your Fitbit die for long period of time, have not been following proper charging practices, or have owned your Fitbit for multiple years, the battery may be at the end of its life. In this case, the battery may not turn on, hold a long charge, or stay on when unplugged.

This process involves exposing the internal components of the Fitbit, desoldering and disconnecting the old battery, and soldering in a new battery.

Caution: Fitbit can become dysfunctional if soldering is done incorrectly, and will not work if the wires are attached to the wrong ends or if the motherboard is exposed to excessive, prolonged heat.

The process will require a T2 Torx Screwdriver, tweezers, razor blade, soldering iron, and solder.



### TOOLS:

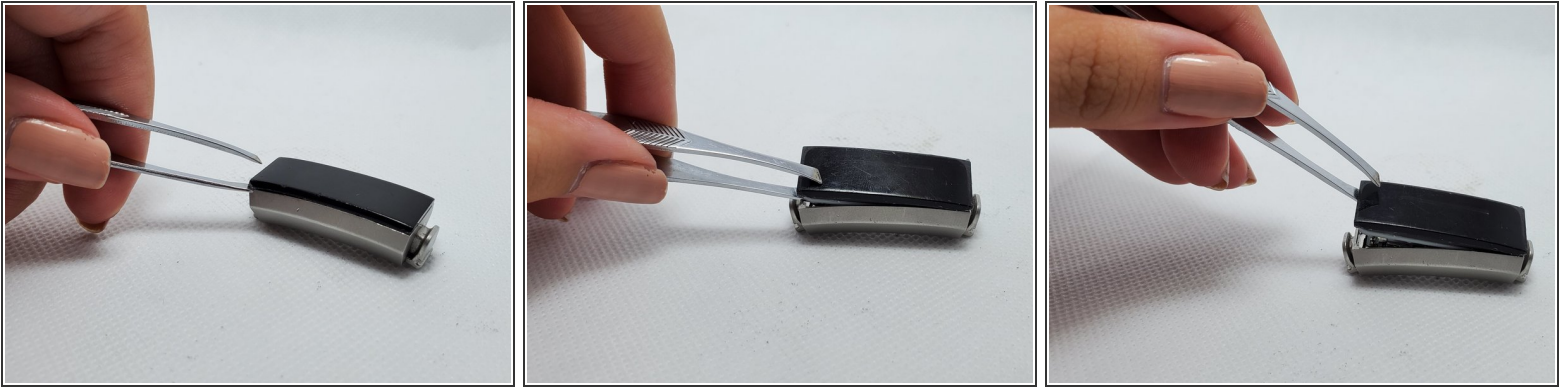
- [T2 Torx Screwdriver](#) (1)
- [Tweezers](#) (1)
- [Razor Blade](#) (1)
- [Soldering Iron](#) (1)
- [Solder](#) (1)



### PARTS:

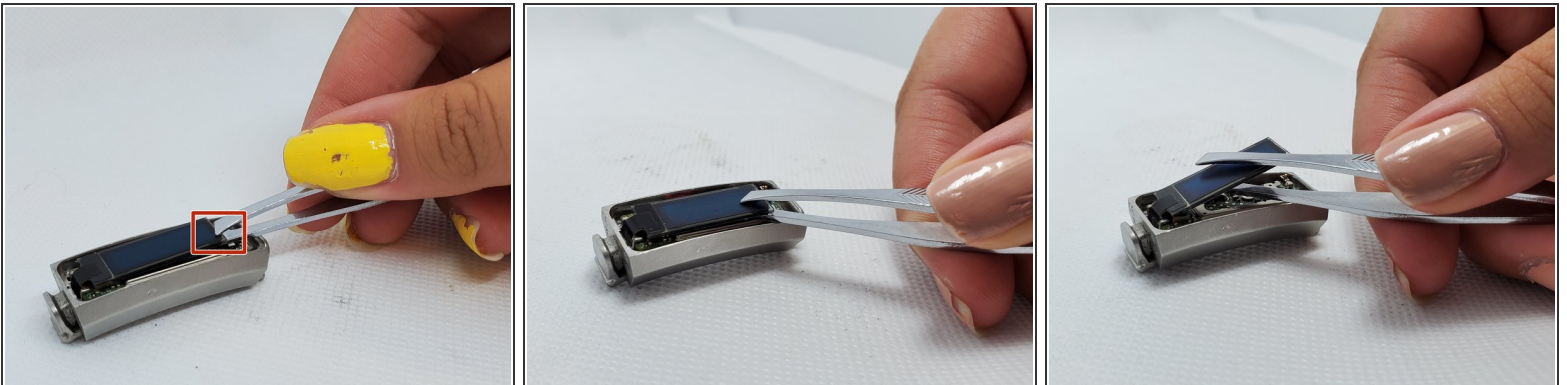
- [Fitbit Alta Replacement Battery](#) (1)

## Step 1 — Battery



- At one of the corners, push the tweezers in between the metal casing and screen cover. Use the tweezers to wedge the two pieces apart. Repeat on all four corners.
  - ⓘ This step requires a large amount of force. Using a razor blade to slide along the length of the screen cover/metal casing may help.
- Once the screen is removed, the Fitbit should look like the third image.

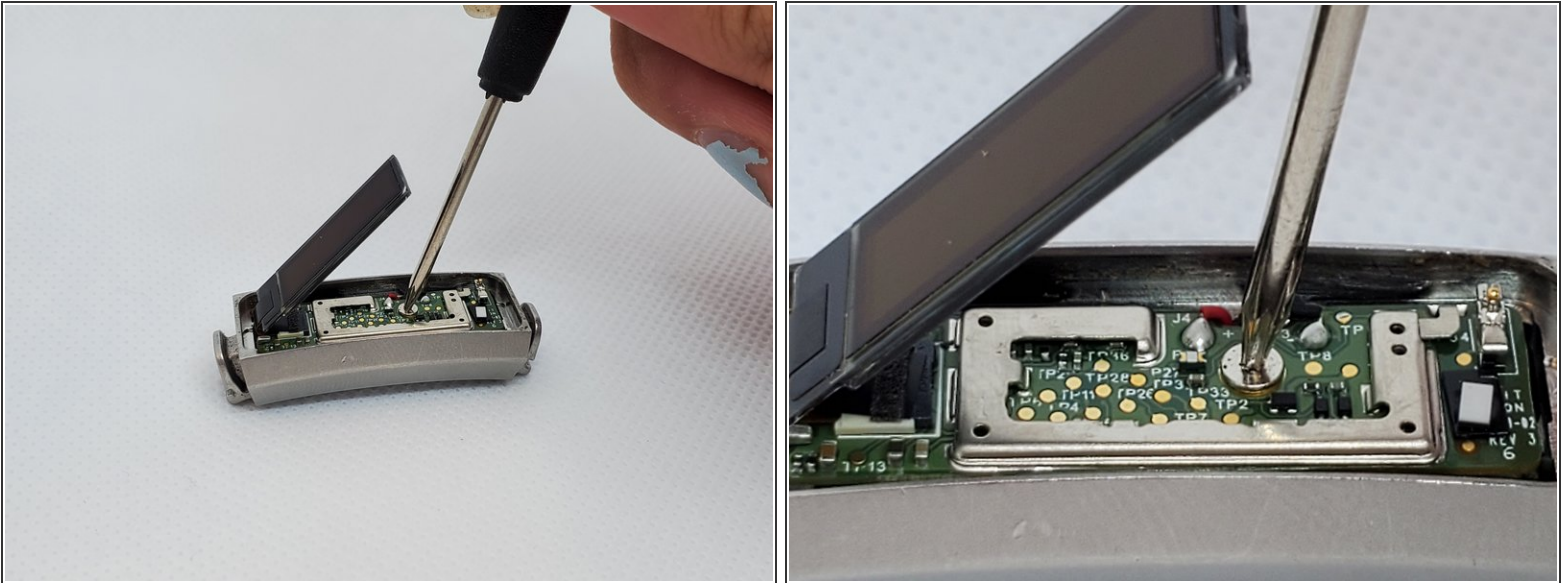
## Step 2



- The screen is partially attached to the motherboard with adhesive, so gently slide the tweezers underneath the entire screen to detach it, then lift it up.
  - ⓘ The screen is made out of thin glass, so make sure not to be too rough.
- ⚠ After this step, the screen should still be connected to the motherboard through a small black hinge. This piece should NOT be removed/cut.

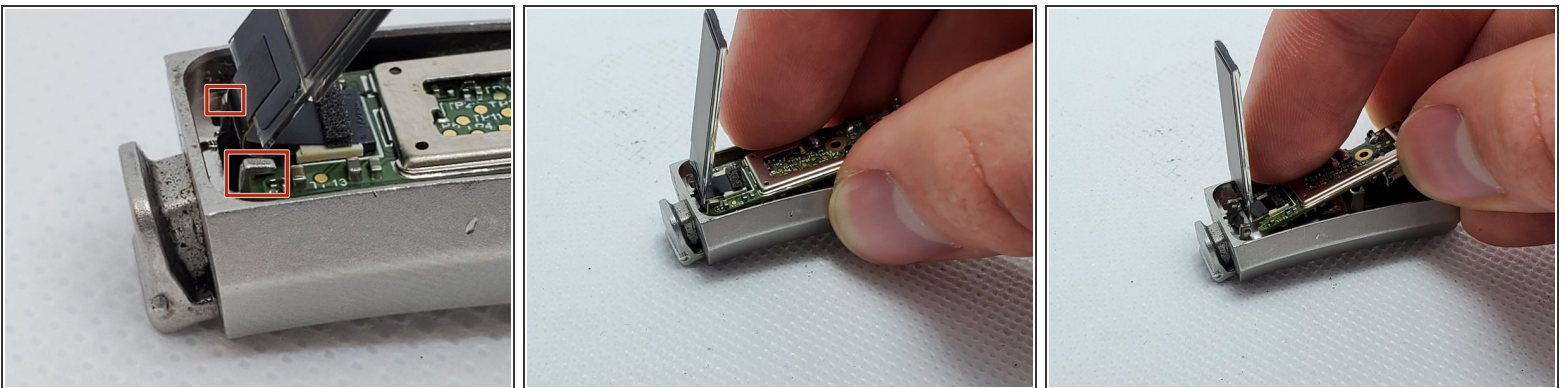


### Step 3



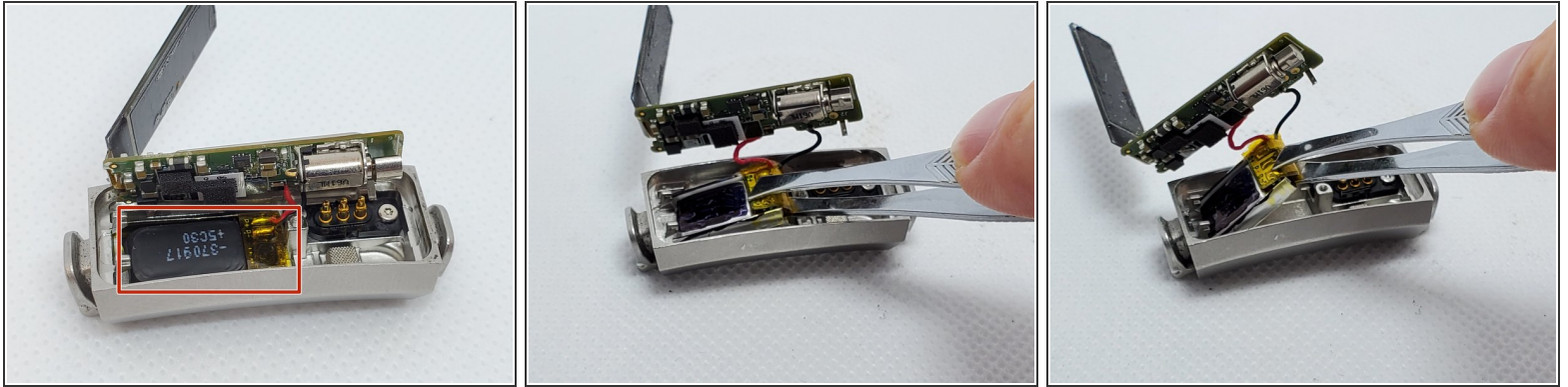
- Once the screen is lifted, the motherboard will be exposed.
- Remove the center screw holding the motherboard in place with the T2 Torx screwdriver.

### Step 4



- The motherboard is held in place by two small hooks. With the screen opening to the left, use your finger to gently press down and slide the motherboard to the right. Once free from the clips, lift the board up.
- ⓘ The motherboard is still attached to the casing by some wires, so make sure not to pull it completely out.

## Step 5



- Once the motherboard is lifted, you will use the tweezers to detach the old battery (located in the bottom left) from the casing. Note that the clear yellow section is a part of the battery.
- ⓘ The battery is held into the casing with adhesive, so it will need to be lifted away in the same fashion that the screen was lifted away in step 2.
- Once the battery is removed, lift the motherboard and attached components completely out of the casing.

- A soldering iron must be used to melt the solder connecting the battery to the motherboard.
- ① A guide of how to solder can be found here: [How To Solder and Desolder Connections](#)
- Cut the wires of the new battery to an appropriate length and strip the ends of the wire casing with the razor to expose the wire.
- Solder the new battery to the motherboard.
- ⚠ Be sure to connect the correct wires to the correct points on the motherboard, or else device will not work.

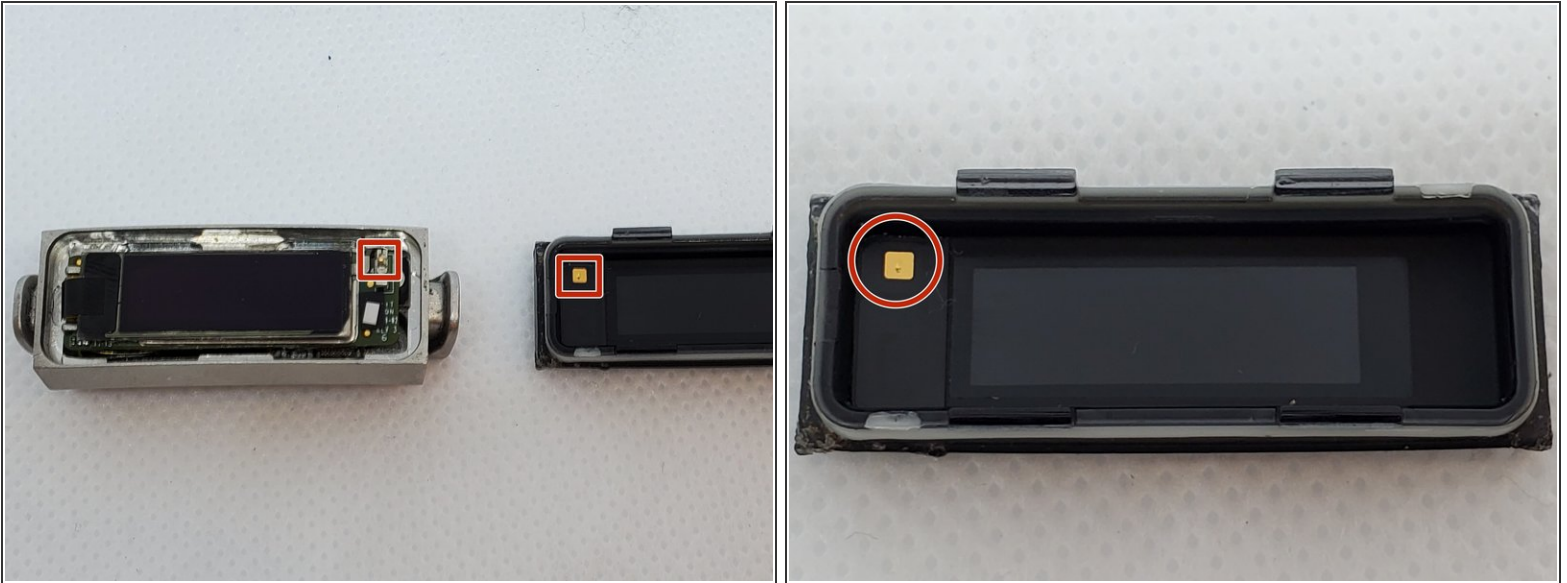
## Step 7




- Repeat steps 3-5 in reverse order.
- ⓘ The screen may have reattached itself, preventing you from completing step three (securing the motherboard). If so, repeat step 2 and then proceed to step 3.
- ⓘ You will need to lightly press down on the motherboard while screwing it in, or it will not make contact.
- To reattach the screen, line it up to the metal outline and gently press it down. You may want to clean the screen with a cloth to remove any dust or fingerprints before proceeding to the next step.



## Step 8



- Replace the screen cover, making sure to match the gold plate on the cover to the gold hook located on the right upperhand corner of the motherboard.
-  This step requires a bit of force, so be sure to use both hands to balance your force evenly across the screen cover, or else you will risk cracking it.

## Step 9



- Plug your Fitbit into its charger to turn it back on and charge up the new battery, if needed.



Your Fitbit should now hold a charge.