



ASUS Q302L Hard Drive Replacement

If the hard drive in your Asus Q302L failed or...

Written By: Caleb Christmas



INTRODUCTION

If the hard drive in your Asus Q302L failed or you just want to replace the drive with a larger drive or an SSD (because your current hard drive lacks the space to store your files), this guide will show you how to access the hard drive for replacement. The hard drive is responsible for data storage on your device, and also houses the operating system. If the drive becomes corrupted or damaged, you may see a corrupted files warning or have trouble booting your device. Check out the [Asus Q302L Troubleshooting page](#) for more details.



TOOLS:

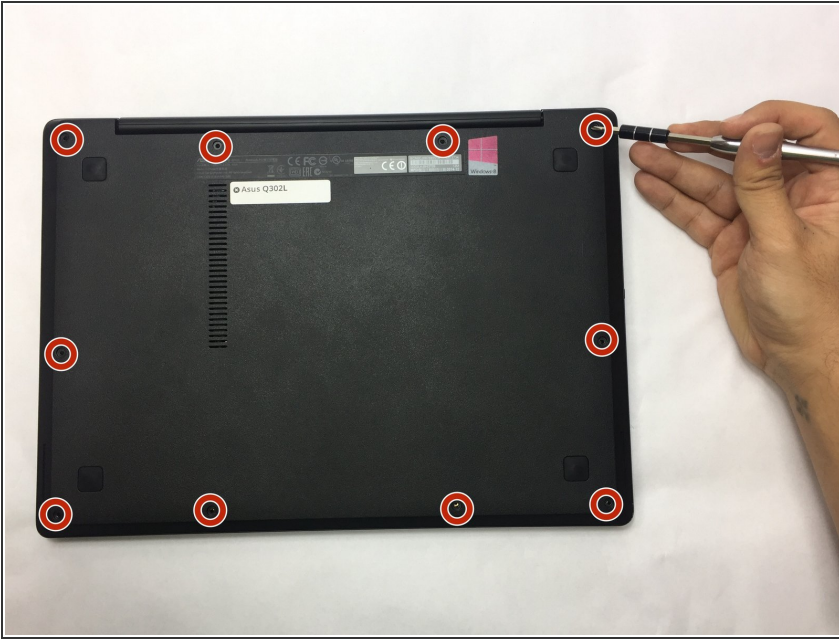
- [Phillips #0 Screwdriver](#) (1)
- [iFixit Opening Tool](#) (1)



PARTS:

- [1 TB SSD](#) (1)
- [250 GB SSD](#) (1)
- [Crucial MX500 500 GB SSD](#) (1)
- [2 TB SSD](#) (1)

Step 1 — Back Case



⚠ Make sure the laptop is disconnected from a power supply and is TURNED OFF.

- Use a Phillips #0 screw driver to remove all ten 10 mm screws around the back of the laptop.

Step 2



- Wedge a plastic opening tool under the rear case near the hinge.
- Pry around the outer edge to release the plastic clips holding the rear case to the laptop.

Step 3



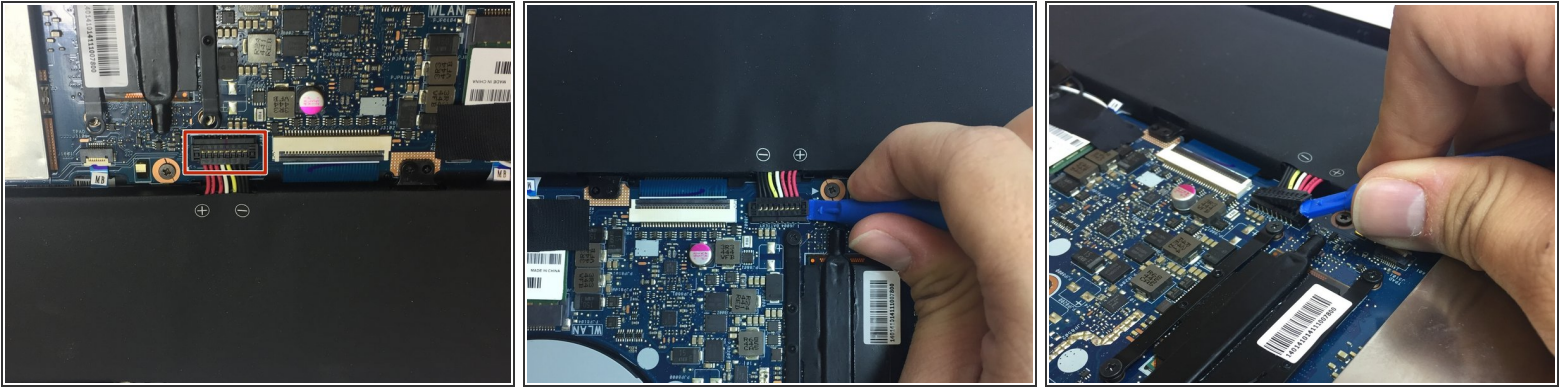
- Once the cover is free from all the clips, remove the cover from the laptop.

Step 4 — Battery



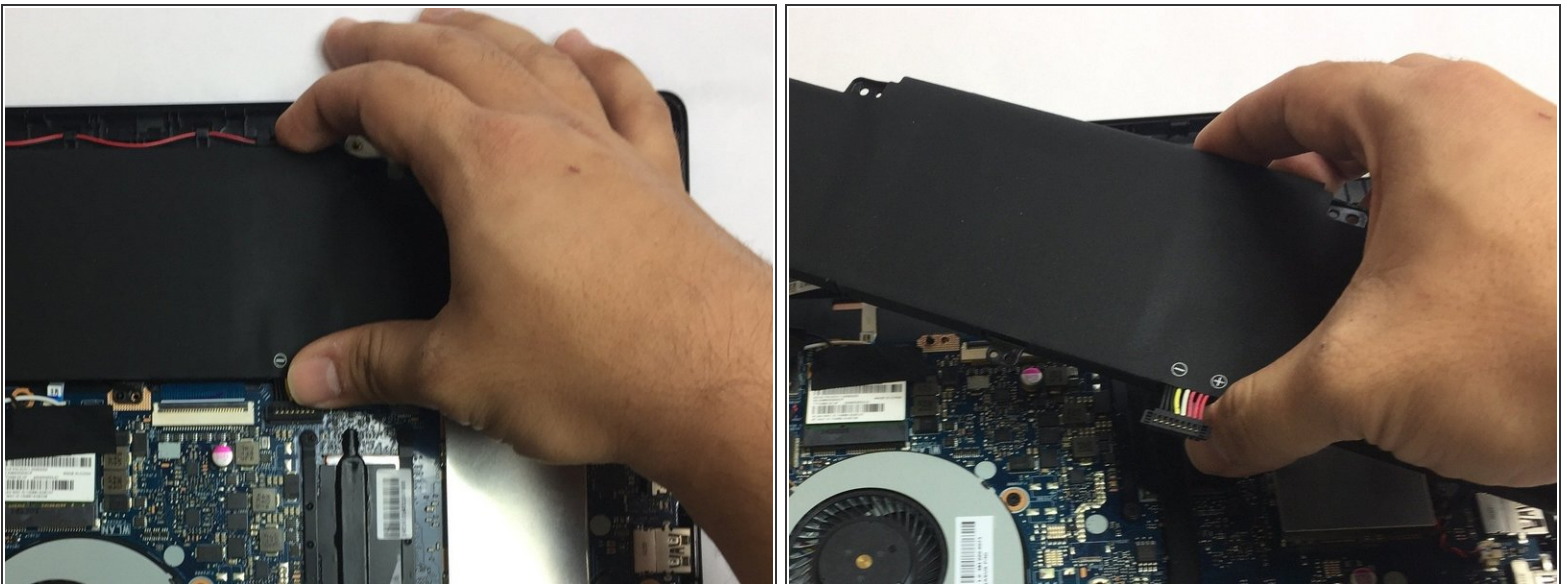
- Use a Phillips #0 screwdriver and remove all five 5 mm screws securing the battery.

Step 5



- Gently wedge a plastic opening tool under the connector.
⚠️ Pry only on the connector not the socket itself or you risk damage to the motherboard.
- Carefully lift the connector up away from the socket to disconnect it.

Step 6



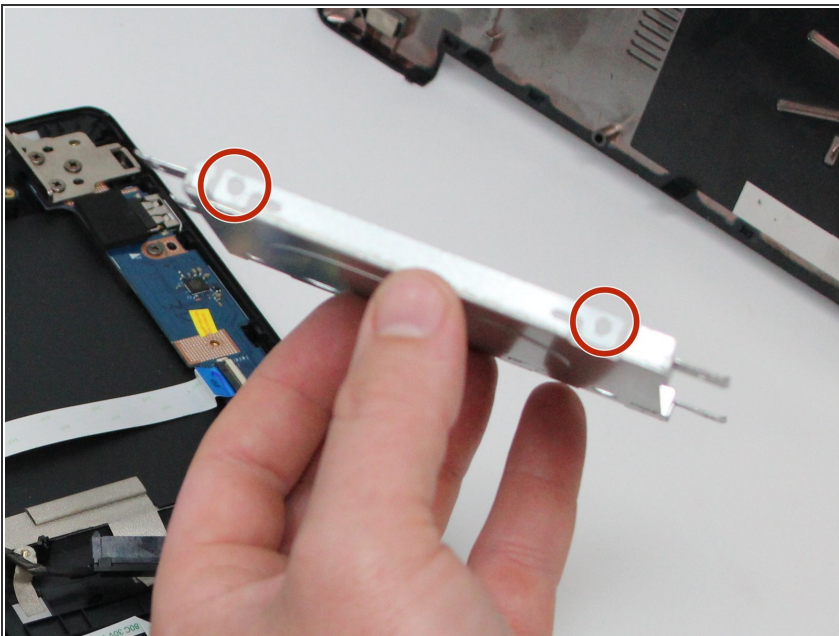
- Once the screws and connector are removed, simply pull out the battery from its place.

Step 7 — Hard Drive



- Unplug the hard drive from the connector.
- Use a Phillips #0 screwdriver to remove all four 5mm screws holding the hard drive metal mounting bracket.

Step 8



- Use a Phillips #0 screwdriver and remove the four 5mm screws on both sides connecting the Hard Drive to the mounting bracket.
- Remove the Hard Drive from mounting bracket.

To reassemble your device, follow these instructions in reverse order.