



Samsung Galaxy A20e Display Replacement

Follow these instructions to replace the display assembly (including frame) in your Samsung Galaxy A20.

Written By: Smilzo



INTRODUCTION

If your phone has been dropped and the glass or the LCD has broken, with this guide you can replace the display assembly of your Galaxy A20e and make it as good as new.

TOOLS:

- [Spudger](#) (1)
 - [Tweezers](#) (1)
 - [iSesamo Opening Tool](#) (1)
 - [Jimmy](#) (1)
 - [iFixit Opening Picks \(Set of 6\)](#) (1)
 - [Phillips #00 Screwdriver](#) (1)
-

Step 1 — Display



- Remove the SIM and MicroSD tray.

Step 2



- Release the back cover with the help of a thin blade or a Jimmy. Insert the tool between the frame display and the cover unclipping it along the entire perimeter.
- Insert a Jimmy between the display frame and the side shell and slide it along the edge, in order to completely disengage the two parts.

⚠ Be careful if you use a Jimmy as they are made of metal and make breaking internal components very easy. It is preferable to use a plastic utensil.

Step 3



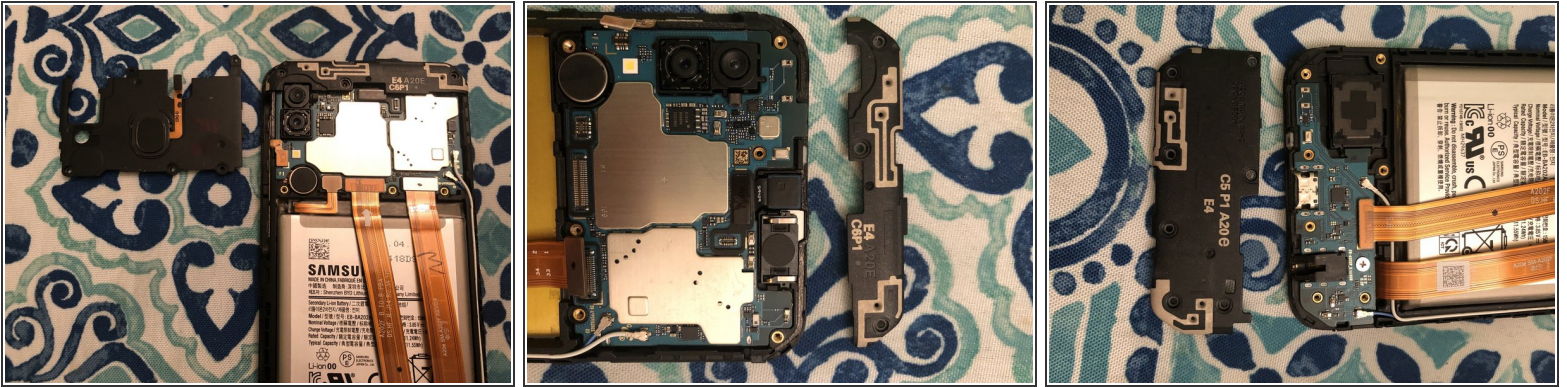
- Disconnect the Fingerprint scanner.

Step 4



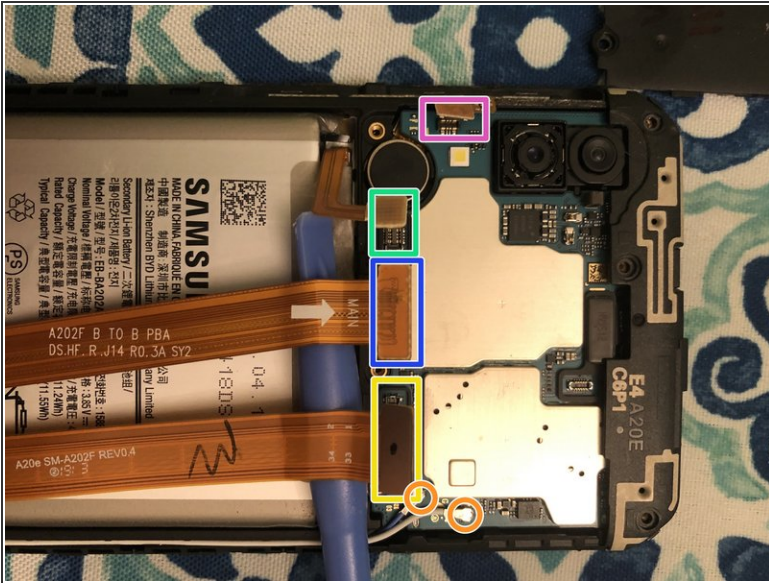
- Using a Philips #00 screwdriver, remove the 13 screws securing the inner cover.

Step 5



- Now you can remove the upper and lower covers that protect the logic board and the speaker respectively.

Step 6



- Pry up the following four connectors:
 - Battery connector;
 - Display connector;
 - Power / volume buttons;
 - Lower logic board connector.
- ⓘ The lower logic board ribbon cable must be disconnected from the lower board as well before proceeding with the next steps.
- ⓘ There is an arrow on the ribbon cable connecting the lower board with the logic board. When reinstalling it, this arrow must point towards the main board.

Step 7 — Remove The Battery



- Remove the battery by placing a few drops of alcohol underneath the battery and letting it sit for about a minute. This will weaken the double-sided adhesive that holds the battery.

- ⓘ If you notice that it wasn't enough, and you need to use too much force, with the risk of bending or damaging the battery, apply more alcohol.

⚠ Never puncture or bend the battery.

- ★ During reassembly, remember to apply new double-sided tape to hold the battery in place.

Step 8



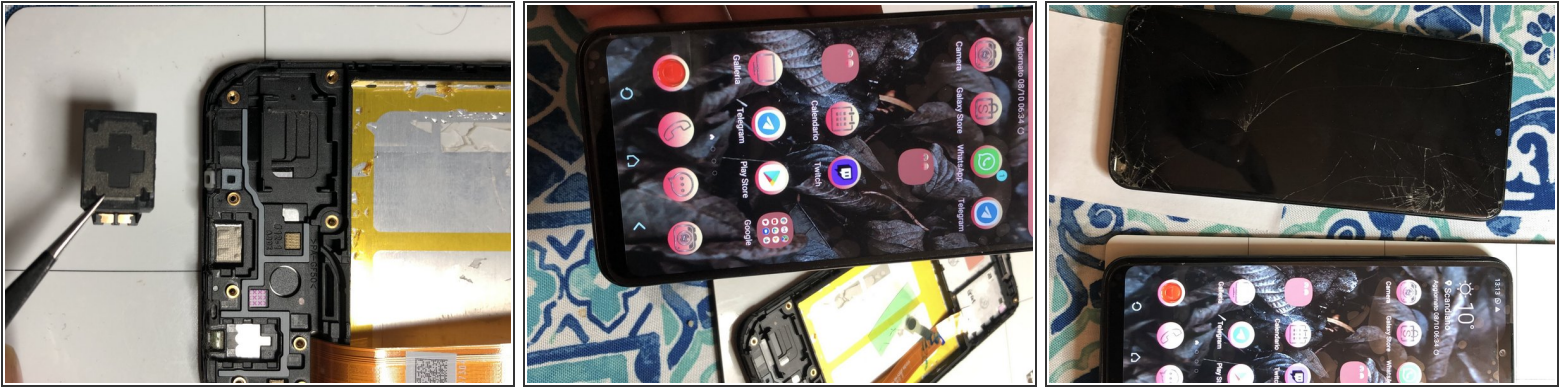
- Disconnect the two blue and white antenna wires.
- ☑ Remember the locations of these wires when you reassemble the phone.
- Remove the motherboard by lifting it away by the upper part.
- Carefully remove the microphone, as it is glued and easily damaged. Try to warm up that area a little to make it easier.

Step 9



- Remove the glued-on vibration motor with the help of a small amount of heat
- Remove the lower motherboard.
- Remove the glued-on speaker with the help of a heat source.

Step 10



- Once you have completed the component removal, you can begin the reassembly by placing the components on the new display.

To reassemble your device, follow these instructions in reverse order.