



ZTE Lever Charging Port Replacement

This guide will show you how to replace the charging port in a ZTE Lever phone; not charging while plugged in.

Written By: Rebekah Earhart



INTRODUCTION

Use this guide to replace the charging port located inside your ZTE Lever Z936L if it is malfunctioning or is broken.

Please verify that your device does indeed need the charging port replaced by checking to see that the device does not charge when plugged in.

Before beginning, make sure you that the device is powered off or has no charge. Also make sure to have nothing connected to the device as well which means making sure to remove the sim and SD cards if you have them.



TOOLS:

- [iFixit Opening Tools](#) (1)
 - [Phillips #0 Screwdriver](#) (1)
 - [IFixit Pro Tech Toolkit](#) (1)
 - [Soldering Iron](#) (1)
 - [Nylon Tipped Tweezers](#) (1)
-

Step 1 — Battery



- Remove the SD card and the Sim card from the device.
- ⓘ The Sim and SD cards are not shown here as our device did not come with them.

Step 2



- Use an iFixit opening tool to separate the back from the device.

Step 3



- Remove the two 1.6mm Phillips #0 screws from the battery plug cover.
- Remove the cover.

Step 4



- Disconnect the battery cable from the motherboard with a plastic opening tool.

Step 5



- Use your hands, or a plastic opening tool, to pry the battery from the phone.

Step 6 — Volume Buttons



- Remove the three 1.6mm Phillips #0 screws from the plastic cover on the motherboard.

Step 7



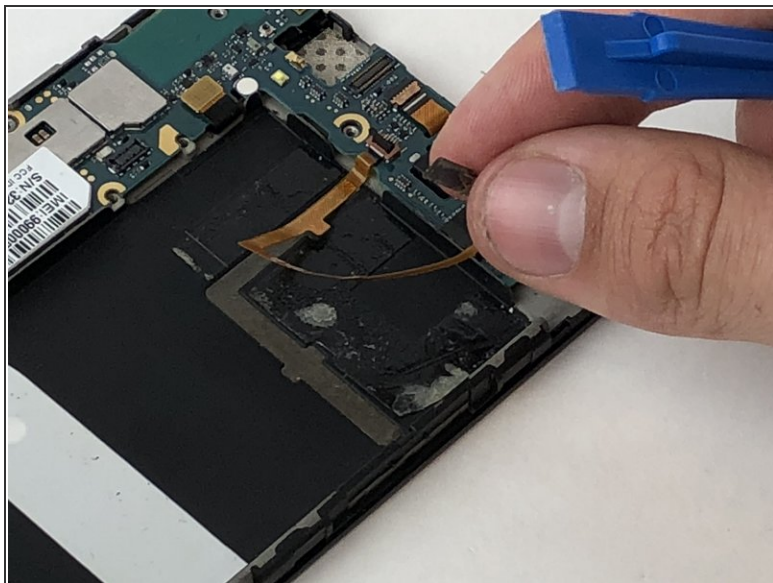
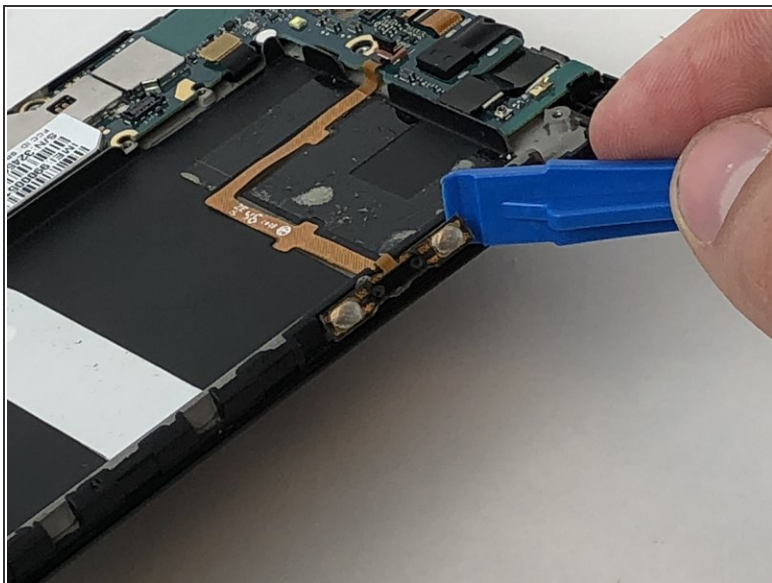
- Remove the top plastic motherboard cover using a plastic opening tool.

Step 8



- Use a plastic opening tool to flip up the retaining flap on the volume ribbon cable [ZIF](#) socket.

Step 9



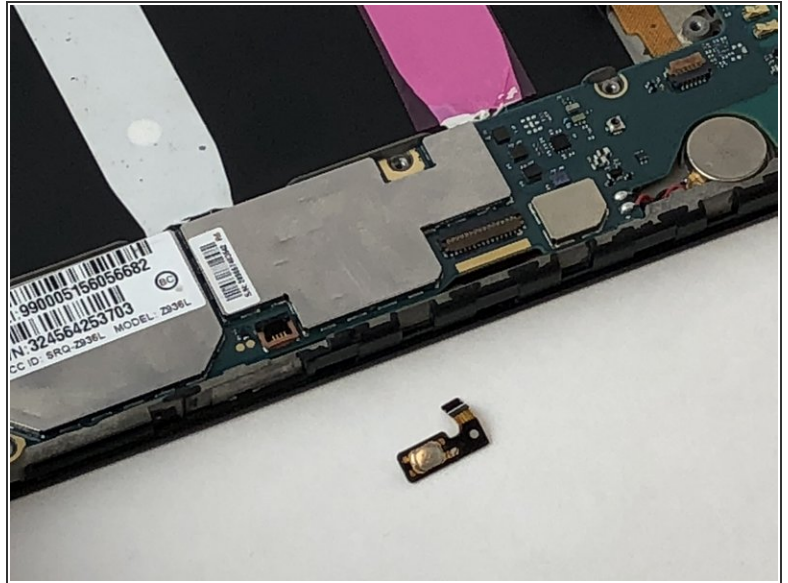
- Peel up the volume button cable from the phone with hands, or plastic opening tool.

Step 10 — Power Button



- Disconnect the power button from the motherboard with a plastic opening tool.

Step 11



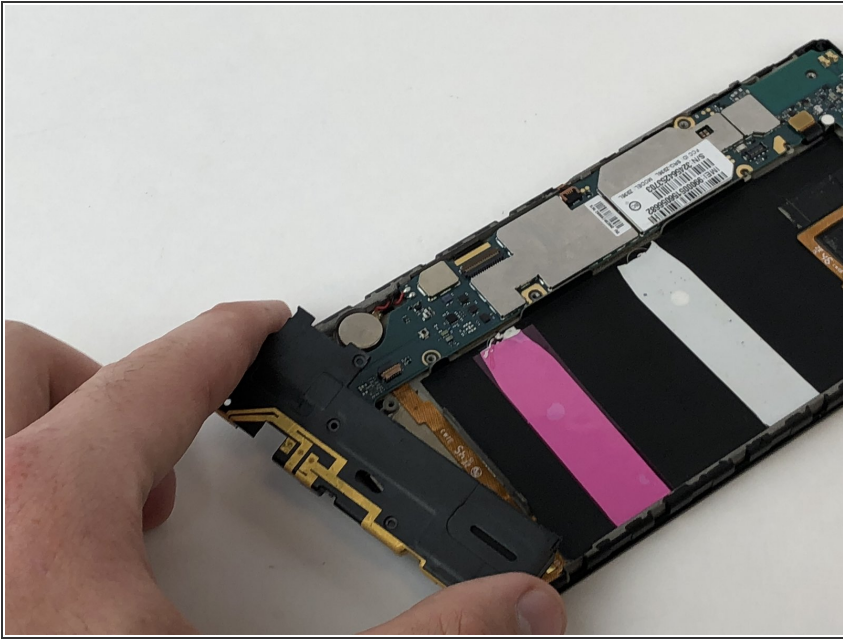
- Peel the power button cable up from the phone with you hands, or a plastic opening tool.

Step 12 — Motherboard



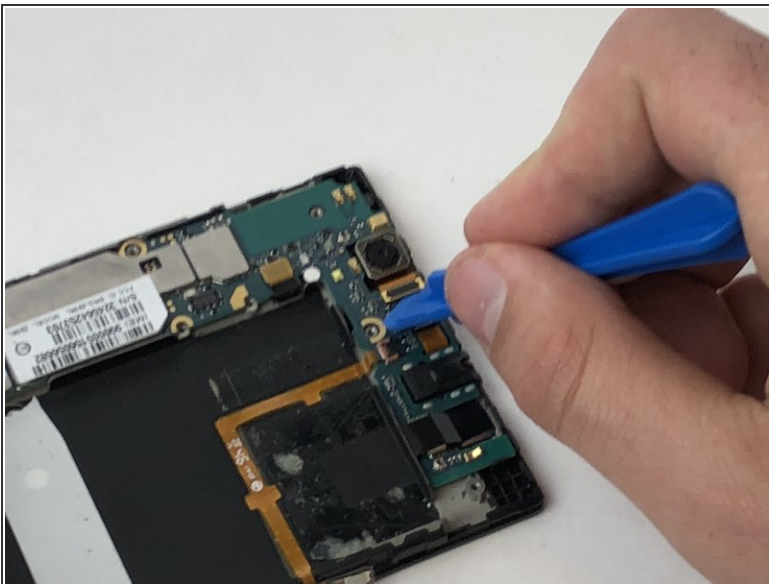
- Remove the seven 1.6mm Phillips #0 screws from the plastic cover on the bottom of the motherboard.

Step 13



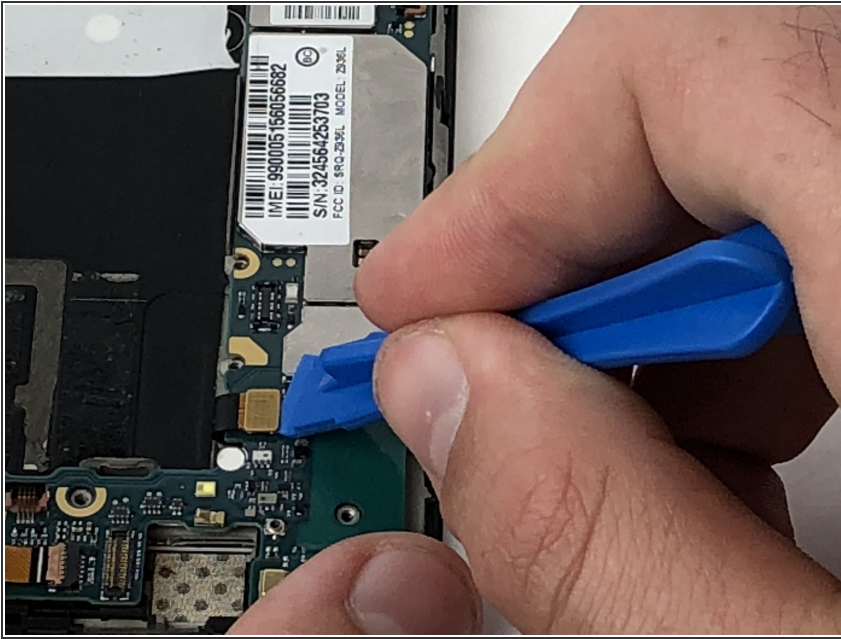
- Remove the bottom plastic motherboard cover with your fingers

Step 14



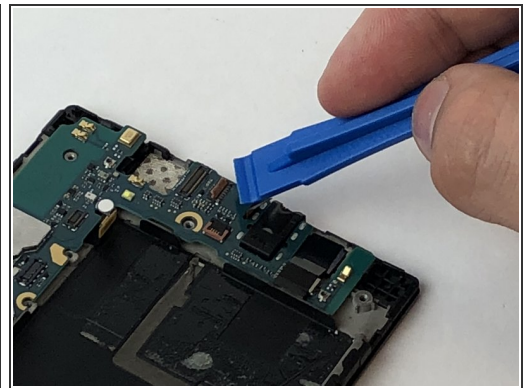
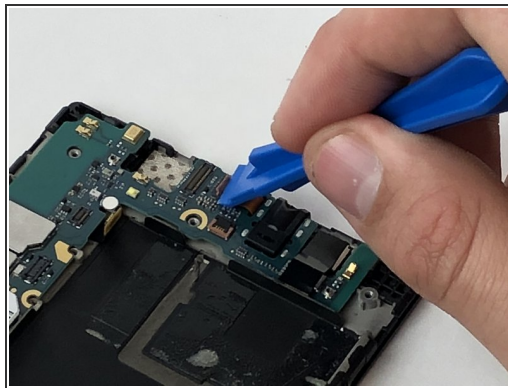
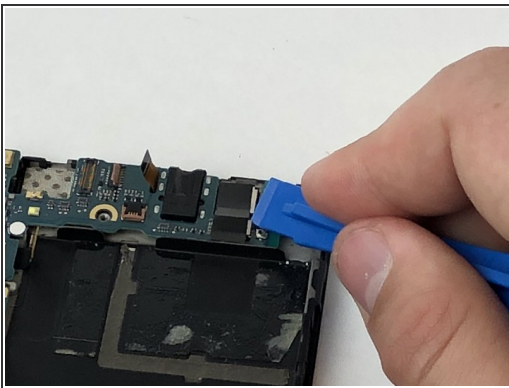
- Disconnect the camera from the motherboard with a plastic opening tool.

Step 15



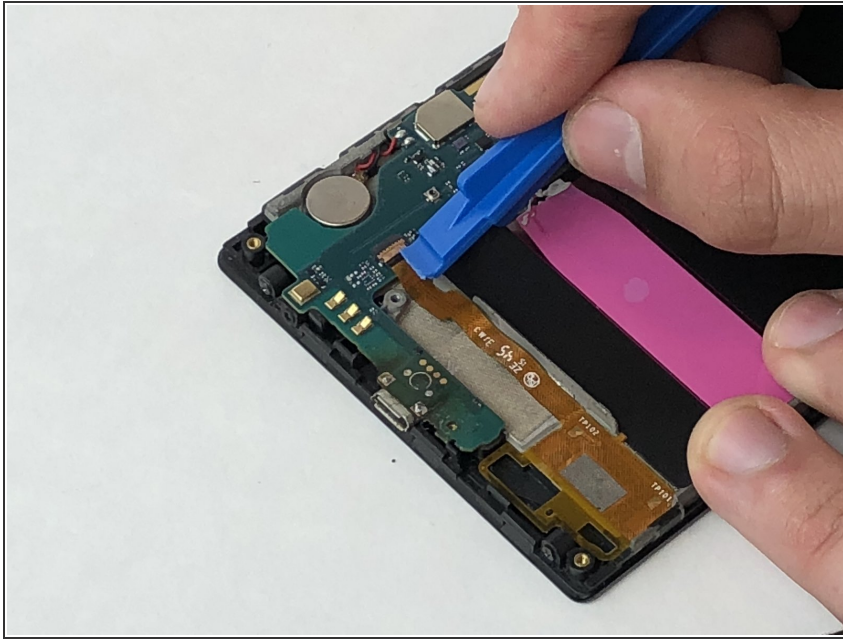
- Disconnect the display cable from the motherboard with a plastic opening tool.

Step 16



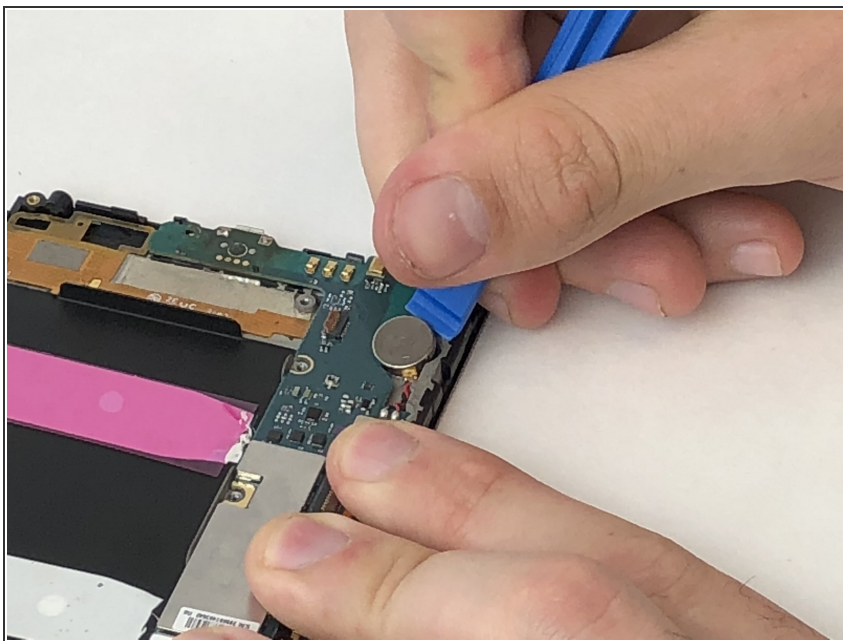
- Disconnect the camera from the motherboard with a plastic opening tool.

Step 17



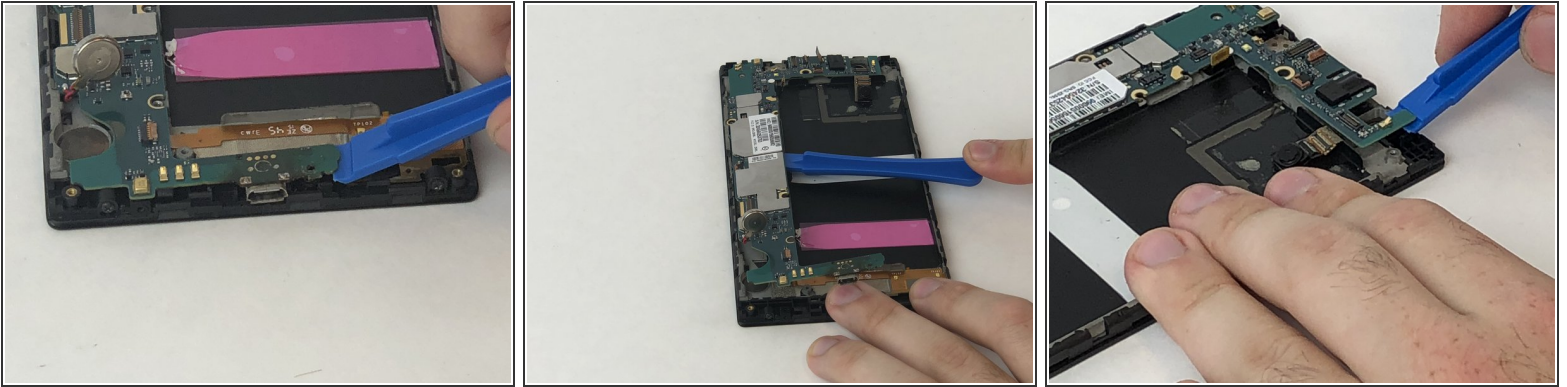
- Disconnect the rear speaker cable from the motherboard with a plastic opening tool.

Step 18



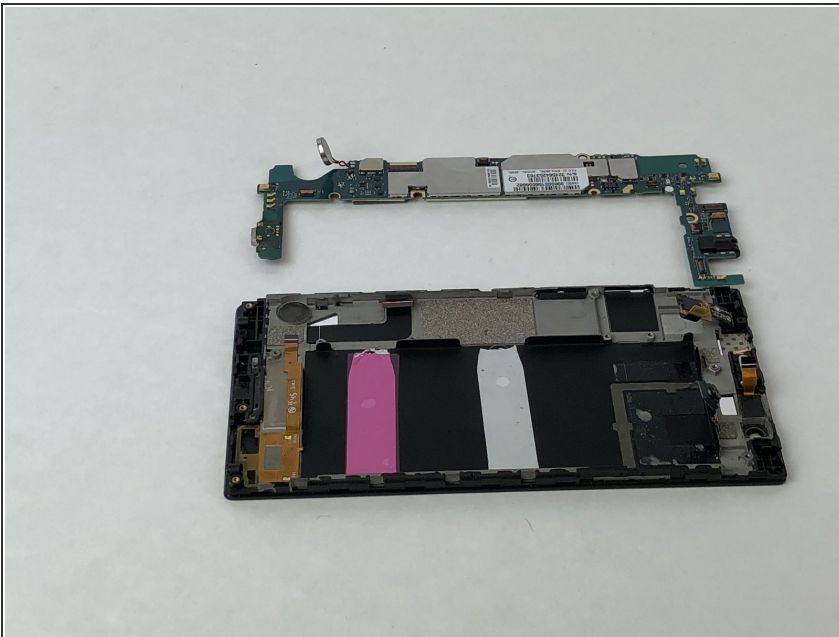
- Pry the motherboard cell battery from its position on the case of the phone

Step 19



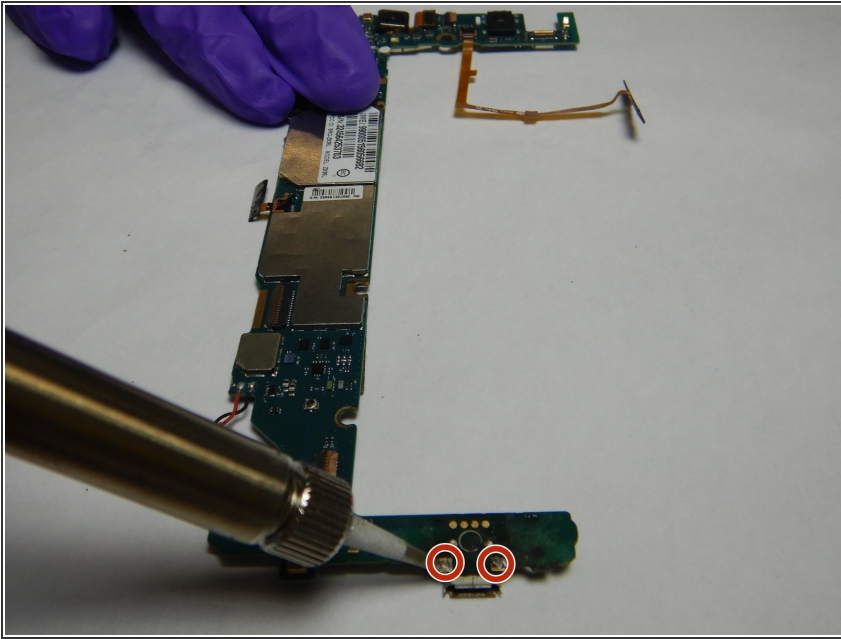
- Using the plastic opening tool, pry the motherboard up, sliding along the edge to separate the pieces.

Step 20



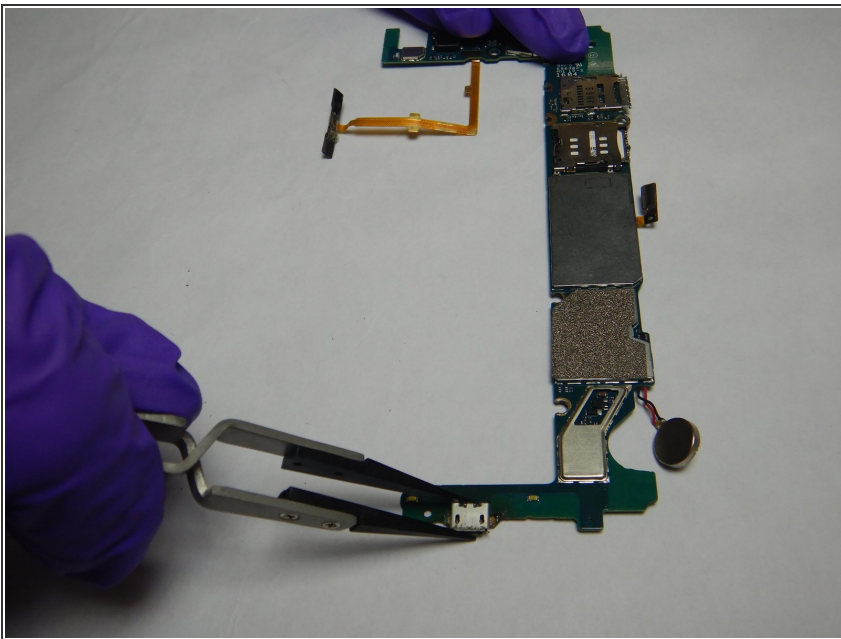
- Remove the motherboard with your fingers.

Step 21 — Charging Port



- Use a soldering gun to desolder the two points connecting the charging port to the motherboard.
- ⓘ Check out our [How to Solder and Desolder Connections guide](#) if you are unfamiliar with the process.

Step 22



- Using a pair of tweezers, separate the charging port from the motherboard.
- ⚠ Do not touch the metal as it may still be hot.

To reassemble your device, follow these instructions in reverse order.