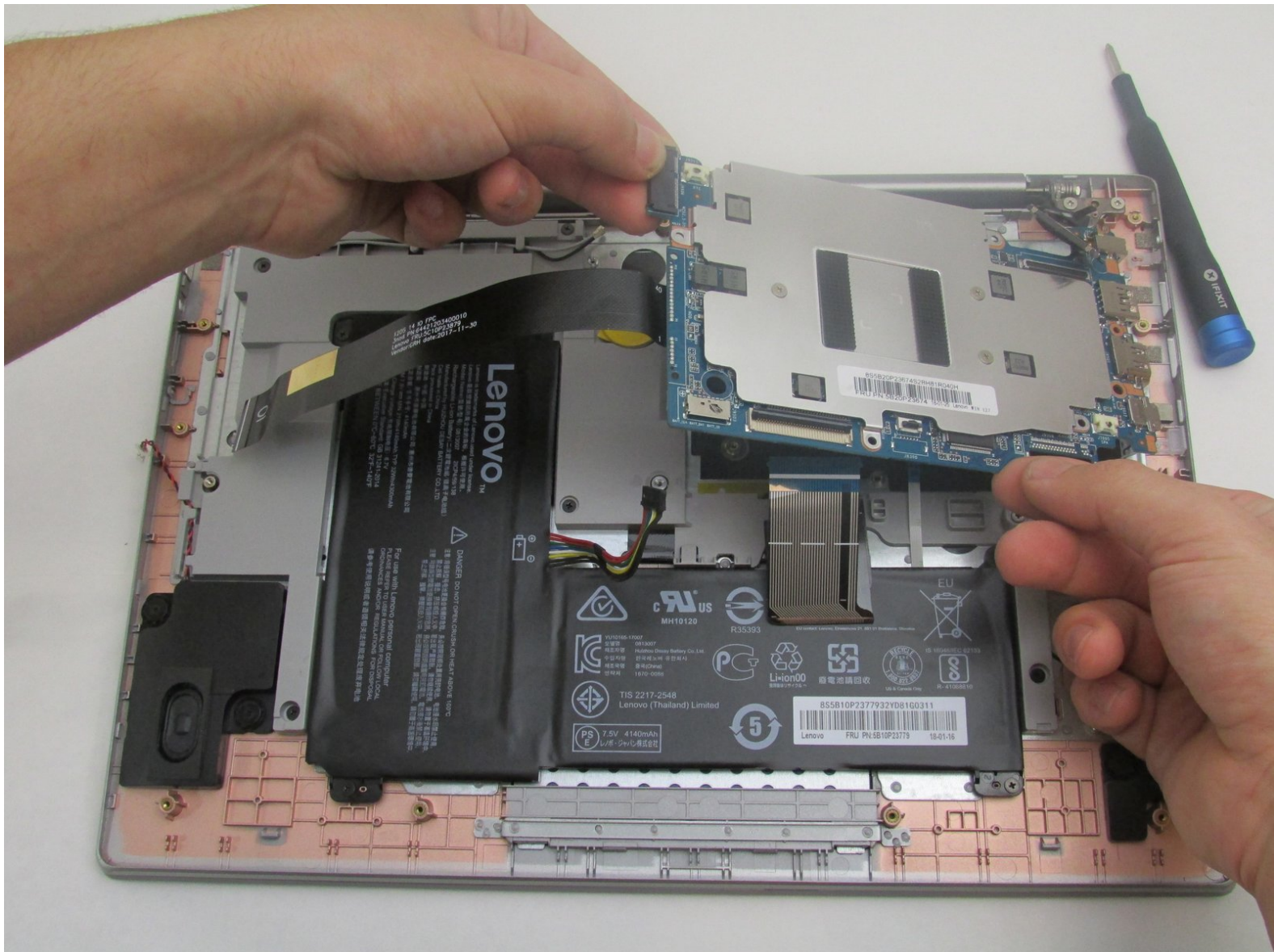




Lenovo Ideapad 120s-14iSp Motherboard Replacement

A comprehensive how-to guide on replacing the motherboard in a Lenovo IdeaPad 120s-14ISP.

Written By: Daniel Lopez



INTRODUCTION

A comprehensive how-to guide on replacing the motherboard in a Lenovo Ideapad 120s-14IAP. The motherboard replacement will fix most operational issues with your laptop. If possible, reduce the amount of contact with components of the motherboard during installation.



TOOLS:

- [T5 Torx Screwdriver](#) (1)
 - [Spudger](#) (1)
 - [Phillips #0 Screwdriver](#) (1)
 - [Tweezers](#) (1)
 - [Jimmy](#) (1)
-

Step 1 — Back Cover



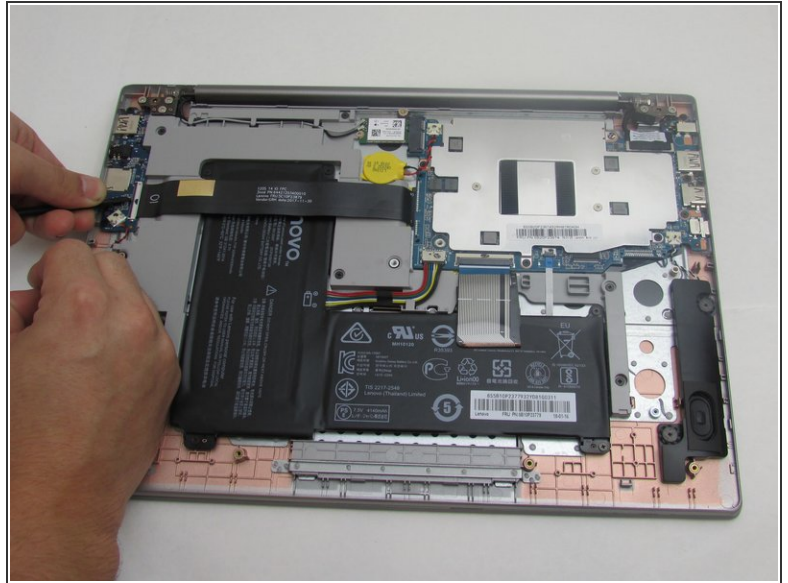
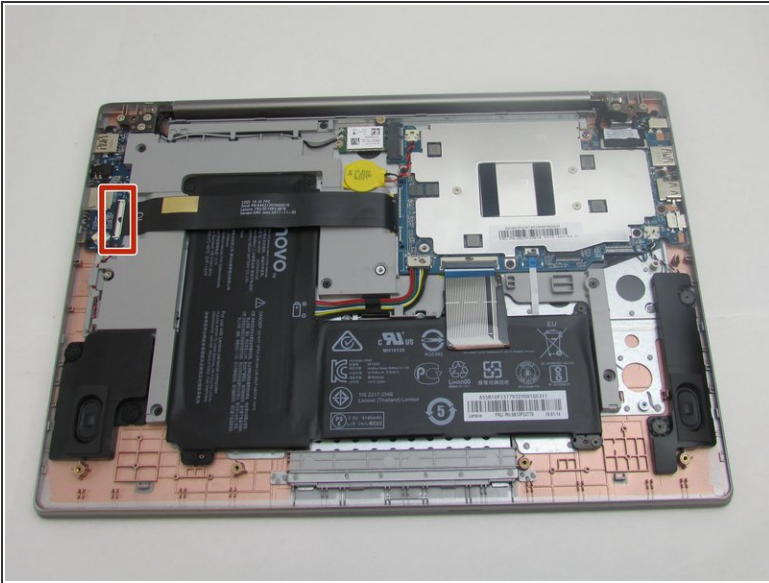
- ❗ Be sure to power off and unplug your device before you begin your repair.
- Orient the laptop so the top is laying flat on your work surface.
- Remove ten 1.5mm Torx T5 screws from the back of the laptop.

Step 2



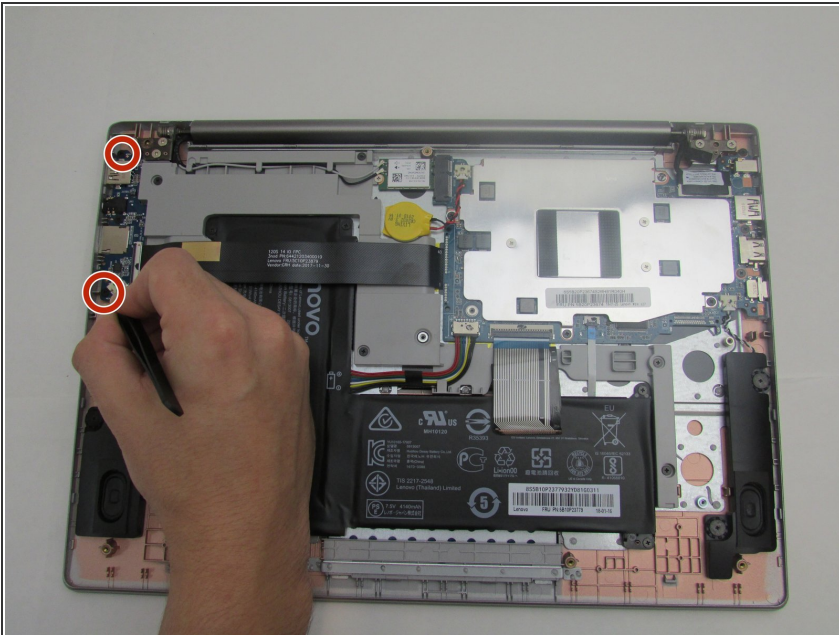
- Insert the plastic opening tool or a Jimmy along the edge of the back cover and gently pry.
- Run the tool all the way around the edge of the back cover and remove the back cover once it is no longer secure.
- Remove the back cover.

Step 3 — USB Daughterboard



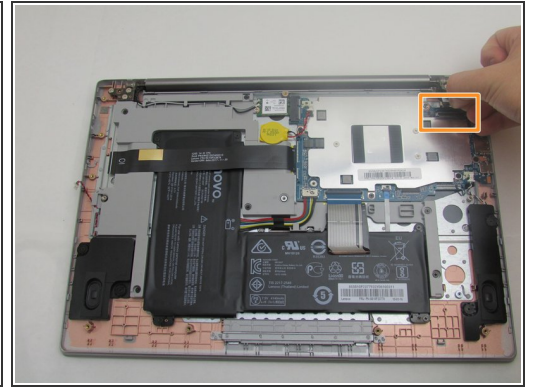
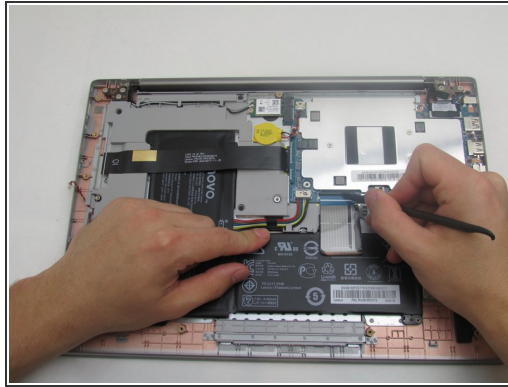
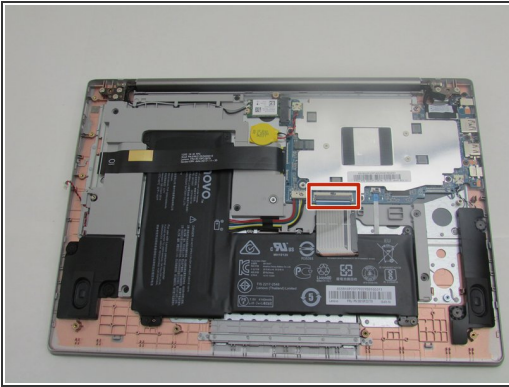
- Use a spudger to lift the black fastener and disconnect the ribbon cable from the USB daughterboard.

Step 4



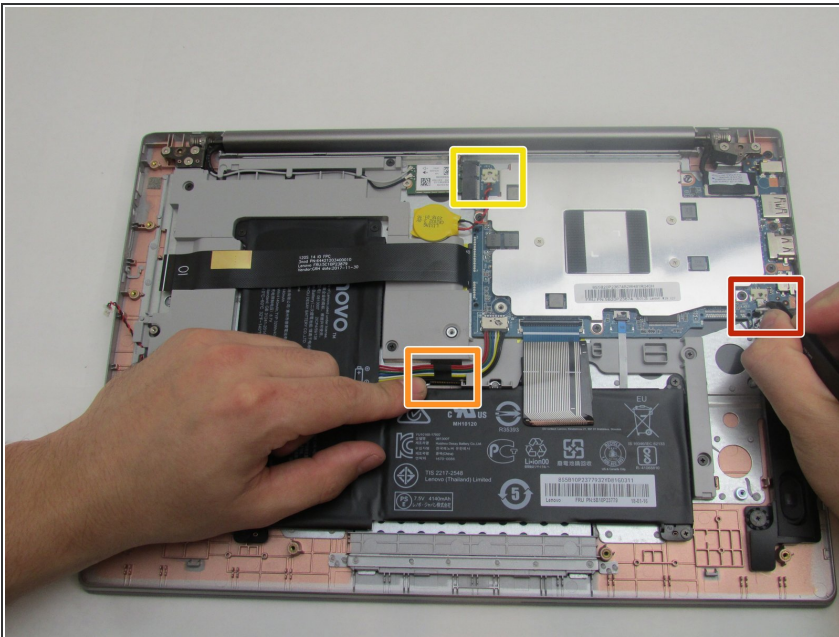
- Using tweezers, disconnect the speaker on the left from the USB daughterboard.
- Remove two 2.5 mm Phillips #0 screws from the daughterboard.
- Remove the daughterboard from the laptop.

Step 5 — Motherboard



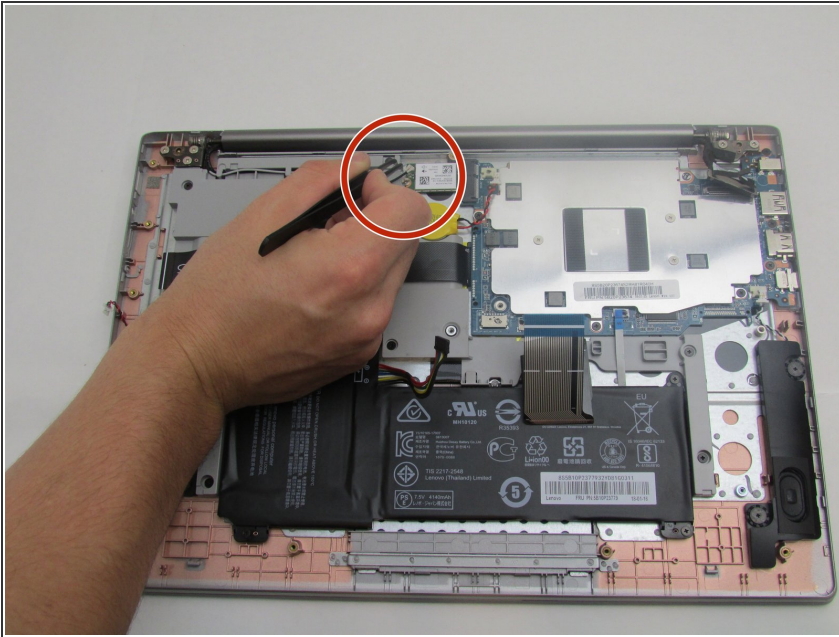
- Using a spudger, disconnect the keyboard ribbon cable from the motherboard.
- Pull on the plastic film to remove the display connection cable.

Step 6



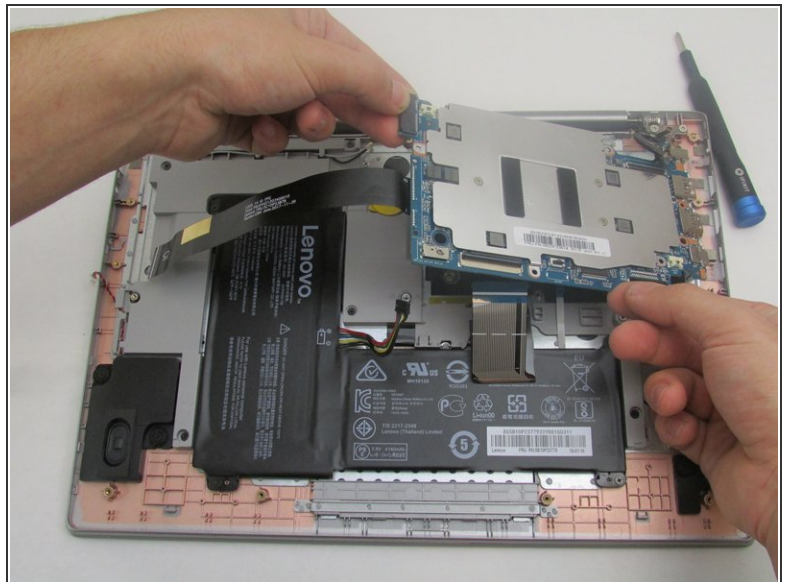
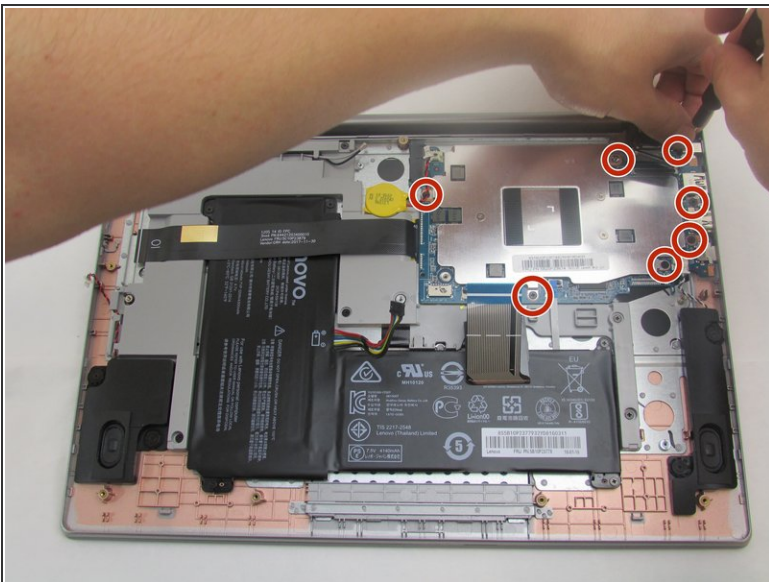
- Using tweezers, disconnect the connections for the right speaker.
- Using tweezers, disconnect the connections for the battery.
- Using tweezers, disconnect the connections for the CMOS battery.

Step 7



- Remove the wireless card by disconnecting the two antenna cables and removing the 2.5 mm Phillips #0 screw.

Step 8



- Remove seven 2.5 mm Phillips #0 screws from the motherboard.
- Slide the motherboard out of the laptop chassis.

To reassemble your device, follow these instructions in reverse order.