



# Toshiba Satellite L655D-S5095 Hard Drive Replacement

Replace the hard drive in your computer.

Written By: Jerry Wakai



---

## INTRODUCTION

Replacing the hard drive in your laptop is a beginner level repair, which can easily be executed.

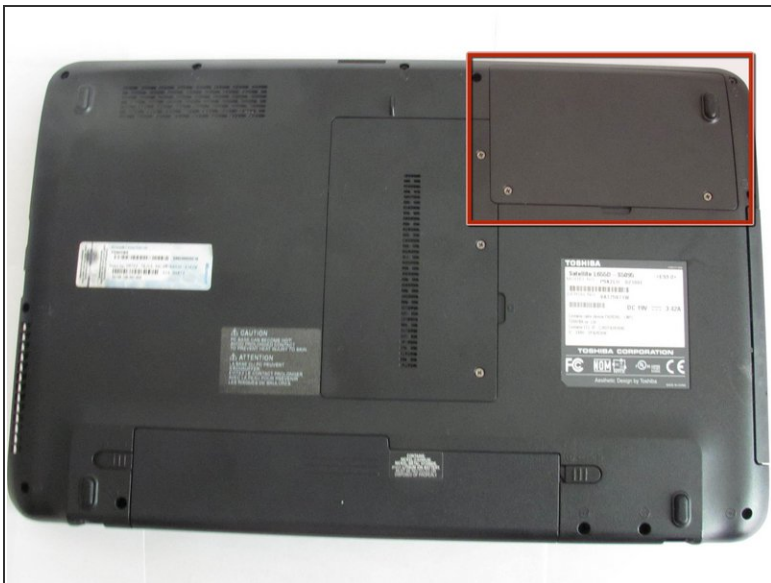
---



### TOOLS:

- [Phillips #1 Screwdriver](#) (1)
-

## Step 1 — Hard Drive



- Unscrew the two screws holding the panel over the hard drive using a Phillips screwdriver. The panel is located on the top right of the laptop's underside.

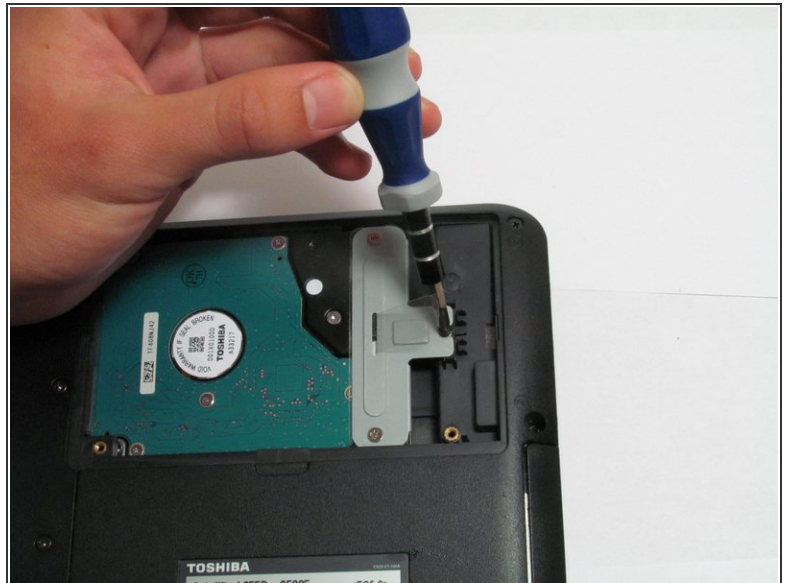
## Step 2



- Remove the cover, firmly lifting from the indent. It is recommended that you leave the screws in the panel.



## Step 3



- Remove the screw located under the plastic tab.

## Step 4



- Remove the hard drive by pulling the tab upwards and sliding the hard drive out.

To reassemble your device, follow these instructions in reverse order.