



HP Spectre x360 13-ac023dx WiFi Card

Replacement

How to replace the WiFi card in a HP Spectre x360 13-ac023dx.

Written By: Jonathan



INTRODUCTION

If your HP Spectre x360 13-ac023dx laptop cannot connect to the wifi after troubleshooting the problem, use this guide to replace the wifi card.



TOOLS:

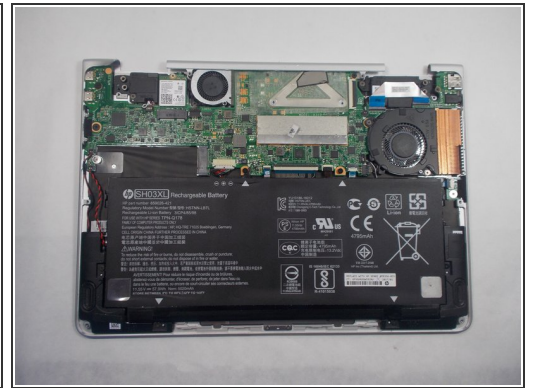
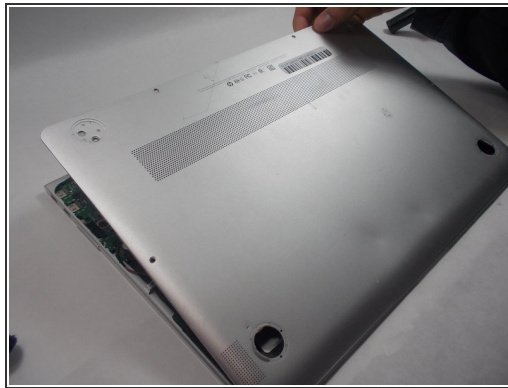
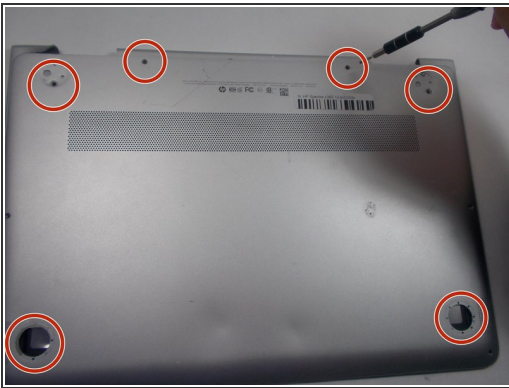
- [Phillips #000 Screwdriver](#) (1)
 - [iFixit Opening Tool](#) (1)
 - [T5 Torx Screwdriver](#) (1)
-

Step 1 — Battery



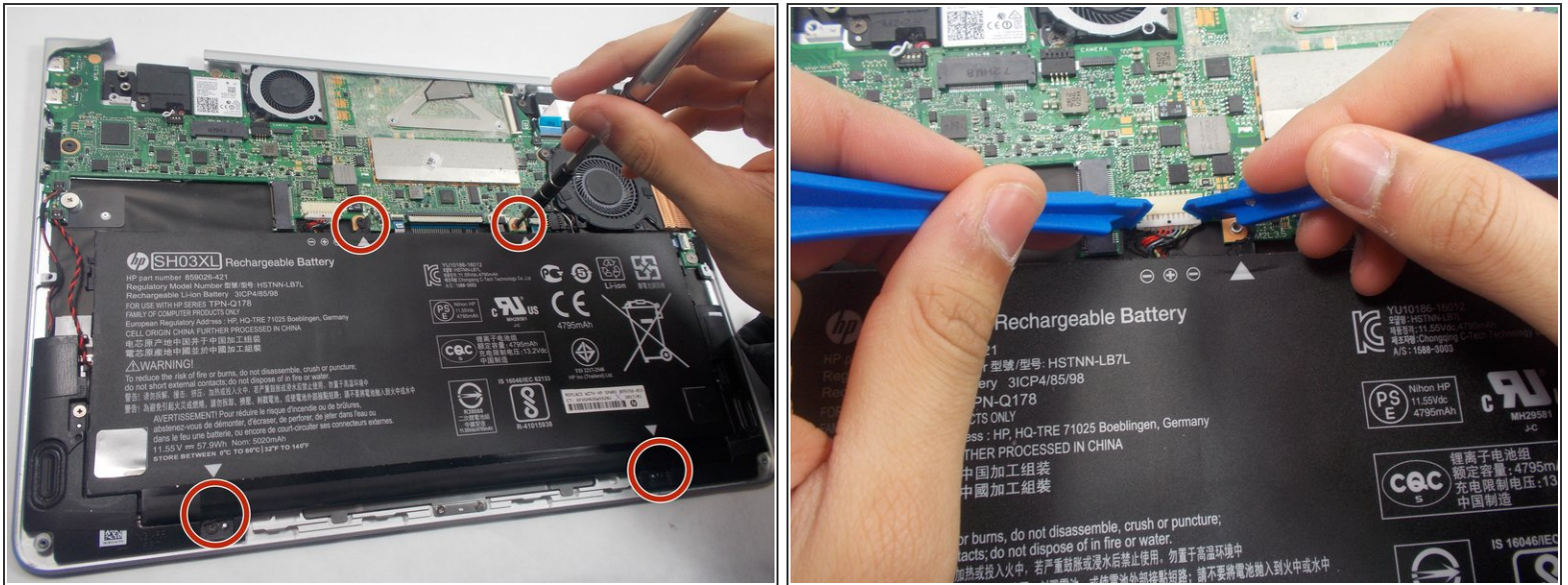
- Flip the laptop over so the model sticker faces the ceiling.

Step 2



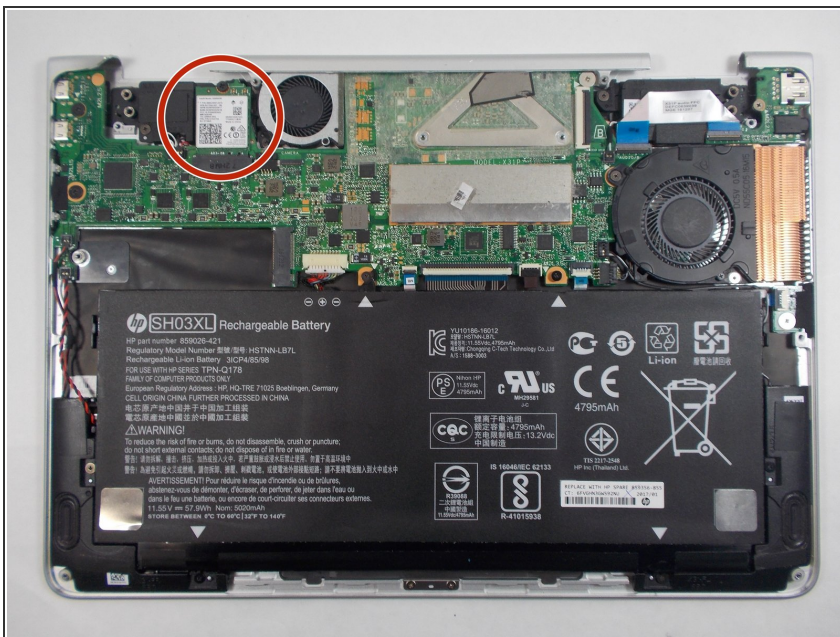
- Use a Torx #5 screwdriver to remove the six 3.5 mm screws holding the back cover to the laptop.

Step 3



- Use the Phillips #000 screwdriver to remove the four 3.5 mm screws holding the battery.
- After removing the screws, detach the battery wire from the mother board with the iFixit opening tool.
- Then, carefully lift the battery off with the iFixit opening tool.

Step 4 — WiFi Card



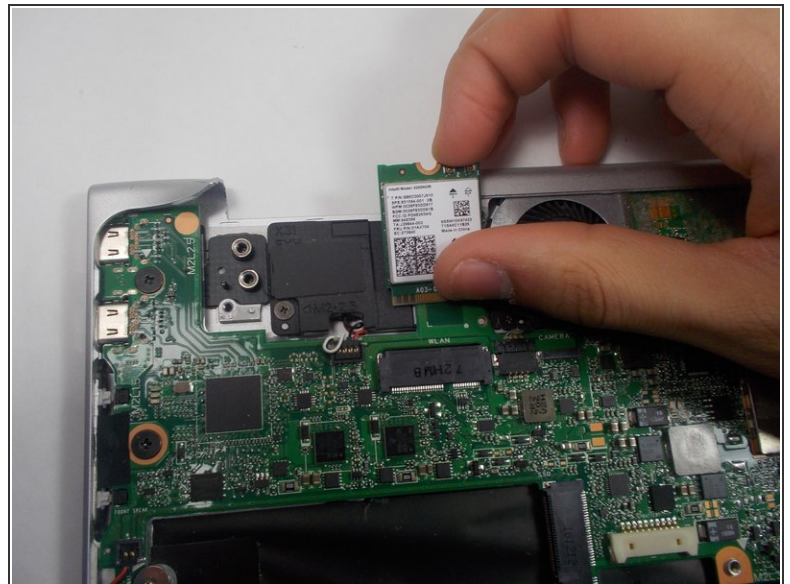
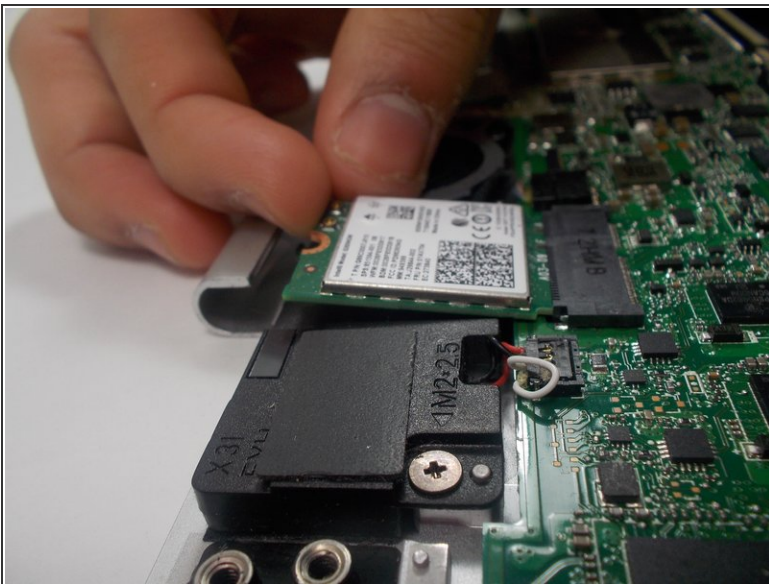
- Locate the WiFi card.

Step 5



- Use the Phillips #000 screwdriver to remove the screw holding the wifi card in place.

Step 6



- Once the screw is removed, raise the WiFi card and slide it out from the motherboard.

To reassemble your device, follow these instructions in reverse order.