



# Acer Aspire ES1-512-C80E Keyboard Replacement

This guide will show you how to remove and replace the keyboard in an Acer Aspire ES1-512-C80E.

Written By: Robert Creighton



## INTRODUCTION

You may need to replace the keyboard on your Acer Aspire ES1-512-C80E if you experience problems regarding the device's input. To access the keyboard, the back cover of the device will need to be removed. The process of replacing the keyboard should take between 15-25 minutes.



### TOOLS:

- [Metal Spudger](#) (1)
- [Phillips #00 Screwdriver](#) (1)
- [Phillips #000 Screwdriver](#) (1)
- [iFixit Opening Tools](#) (1)



### PARTS:

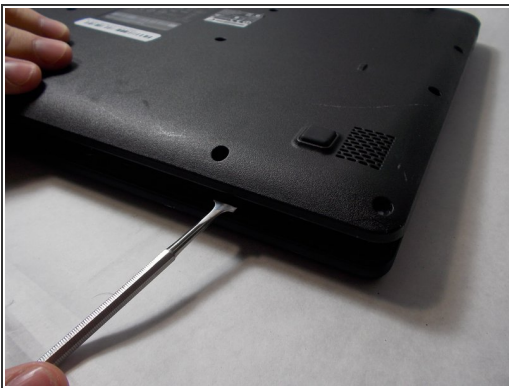
- [Acer Aspire ES1 512 Keyboard](#) (1)

## Step 1 — Back Cover



- Place the device upside down on a flat surface.
- Using a Phillips #00 screwdriver, remove all nineteen 1.2mm screws that secure the bottom cover of the device.

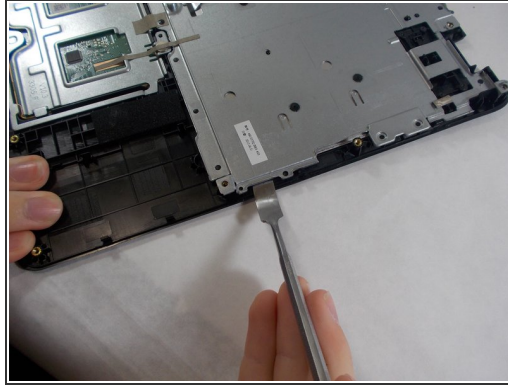
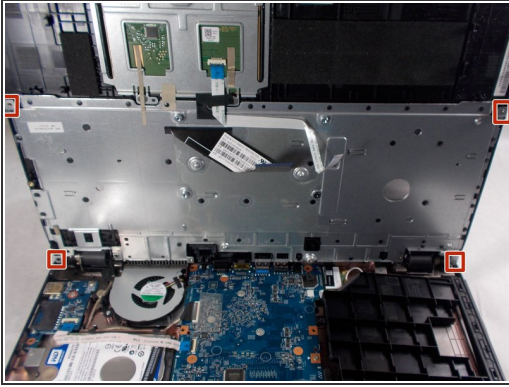
## Step 2







- Pry around the edges with a spudger to remove the back cover.
- i** The two hinges on the back require additional force to be popped open.

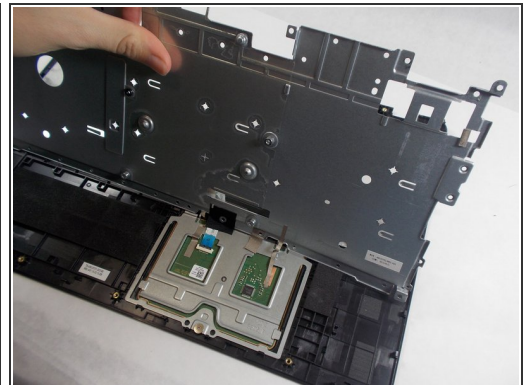
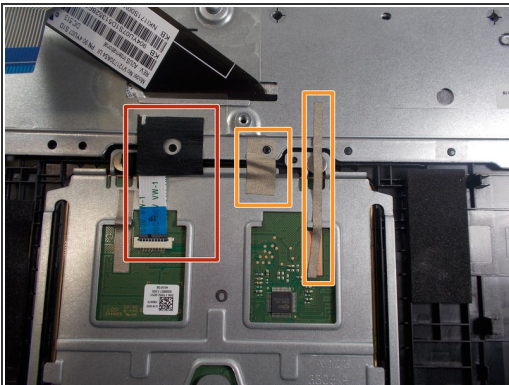






## Step 3 — Keyboard



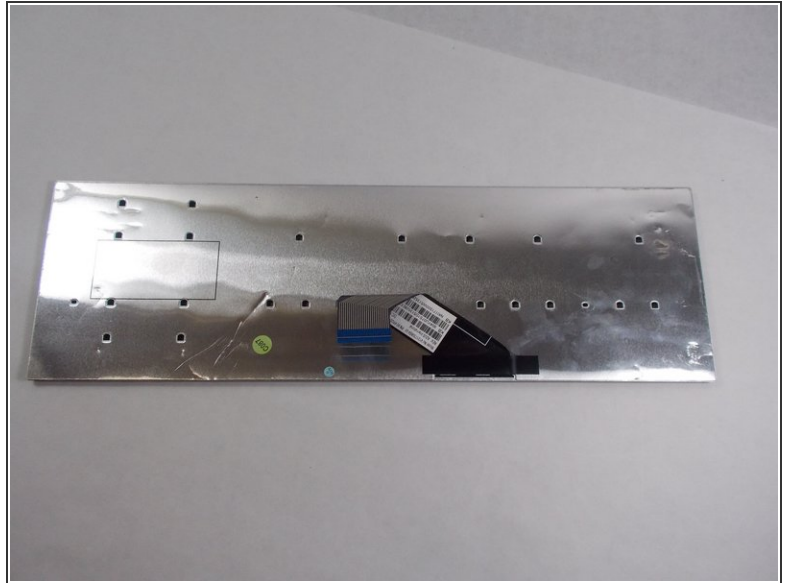
-  The keyboard is the silver piece located by itself on the upper half of the laptop.
-  Using a Phillips #00 screwdriver, remove the four 1.2mm screws from the keyboard.
-  Using a spudger, go around the edges and pry off the keyboard.
-  All black clips will have to be removed before the keyboard can be removed.

## Step 4



-  Remove the ribbon cable connection from the keyboard.
-  Peel back the two pieces of tape to separate the keyboard.
-  Remove the keyboard from under the plastic covering.
-  Remove the silver plate back cover of the keyboard from the bottom base.

## Step 5



- Remove the large silver plate from the keyboard.
- ❗ You can not remove the silver backing with the attached wire from the back of the keyboard.

## Step 6



- The keyboard is removed and ready to be replaced.

To reassemble your device, follow these instructions in reverse order.