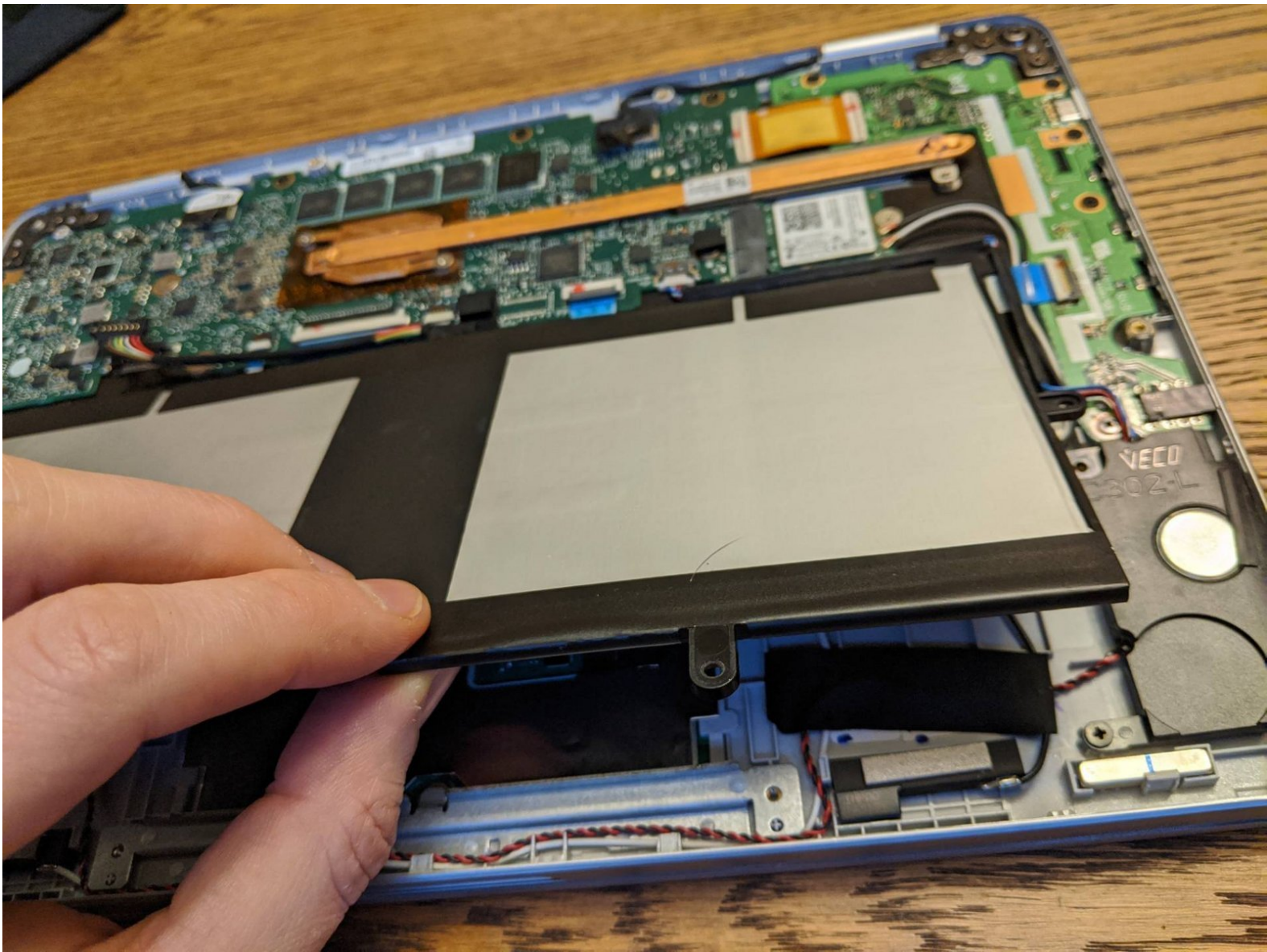




# Chromebook Flip C302 Battery Replacement

Remove and replace the battery inside an Asus Chromebook Flip C302.

Written By: Kevin Purdy



# INTRODUCTION

This guide will remove the battery from your ASUS Chromebook Flip C302 and allow for installing a new battery.



## TOOLS:

- [Phillips #00 Screwdriver](#) (1)
- [Phillips #0 Screwdriver](#) (1)
- [T4 Torx Screwdriver](#) (1)
- [iFixit Opening Tool](#) (1)
- [Tweezers](#) (1)



## PARTS:

- [Asus Chromebook Flip C302 Battery](#) (1)

## Step 1 — Chromebook Flip C302 Back Cover Removal



- Turn the Chromebook upside down. You may want to place paper or another soft material between the lid and your work surface, so as not to scratch it.
- Remove the 10 (6.14 mm) case screws with a T4 Torx driver.

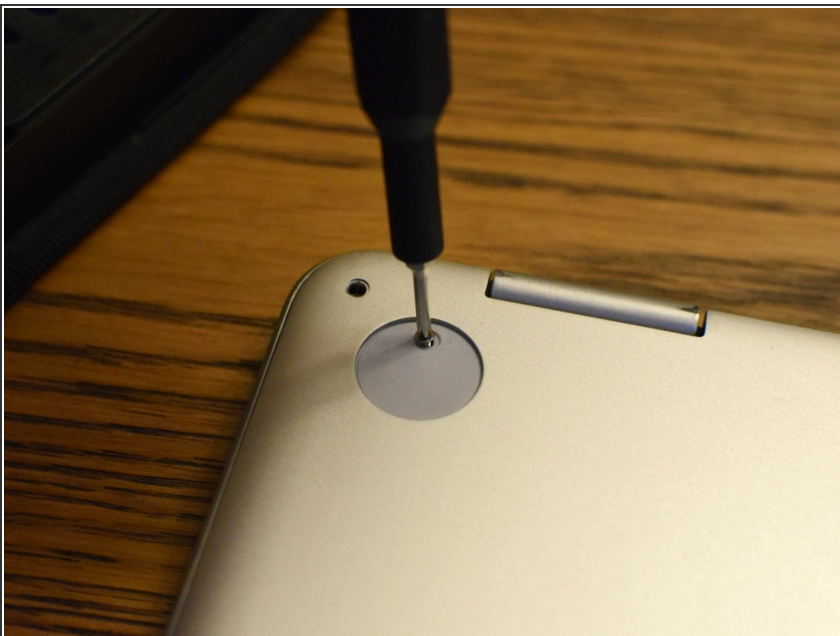


## Step 2



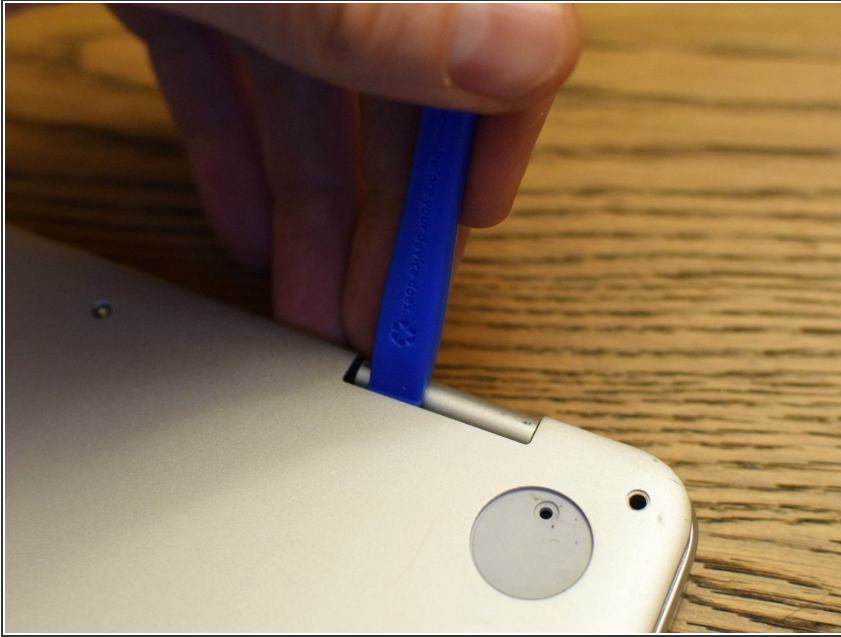
- Using a spudger (or prying tool, or fingernail), gently lift the feet at the rear of the laptop (near the hinges). Get underneath the pad, then release the adhesive by sweeping in a circular motion.
- Store the feet upside down and not sticking to anything—you can likely re-adhere them after replacing the cover.

## Step 3



- Use a #00 screwdriver to remove the 3.17 mm screws from beneath the rear feet.

## Step 4



- Using a plastic prying tool (avoid metal, as the case is easily scratched), lift the back cover from the case. The underside of a hinge is a good place to start.
- You'll feel the cover give way, but there are loose clips holding the lid on. Work gently around the lid, prying and moving beyond clips when you encounter them.

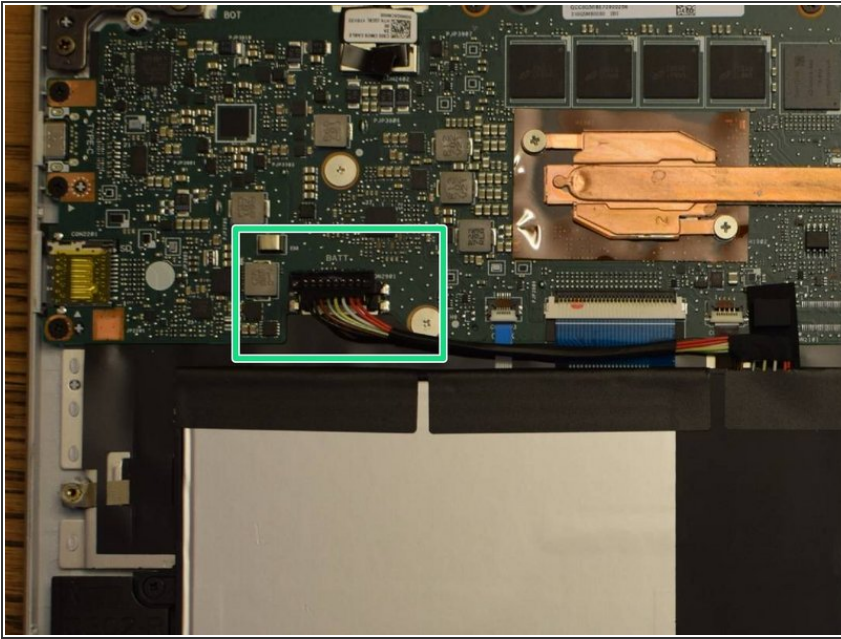
## Step 5



- Pull away the back cover. You now have access to the battery, the write-protect screw, and other components.

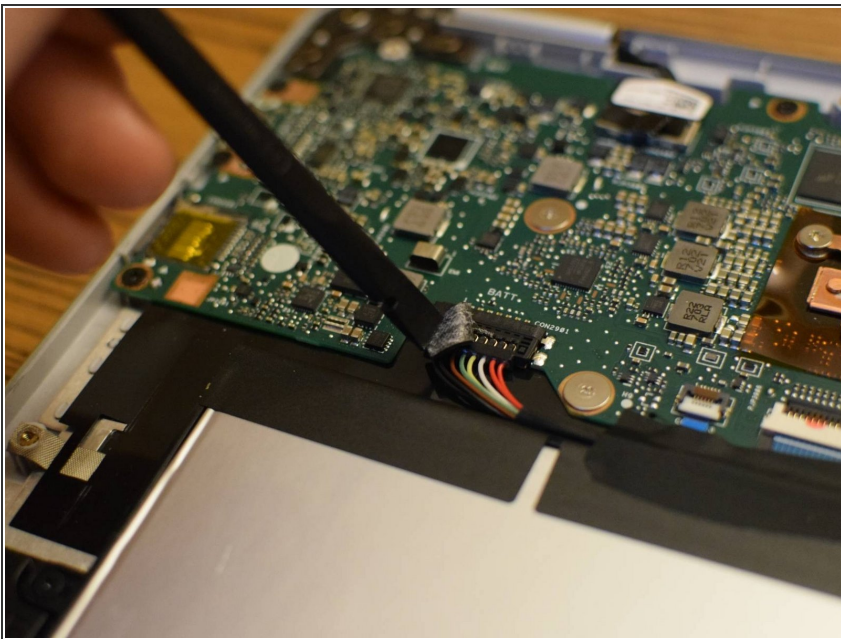


## Step 6 — Battery



- Locate the battery connector. With the large silver/black battery facing you, the connector is just above it, in the middle-left. But **first we must remove some tape.**

## Step 7

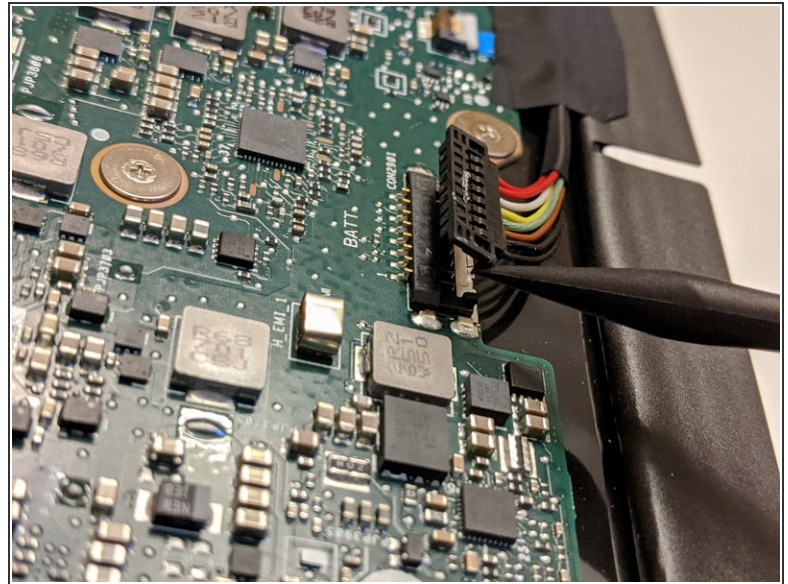
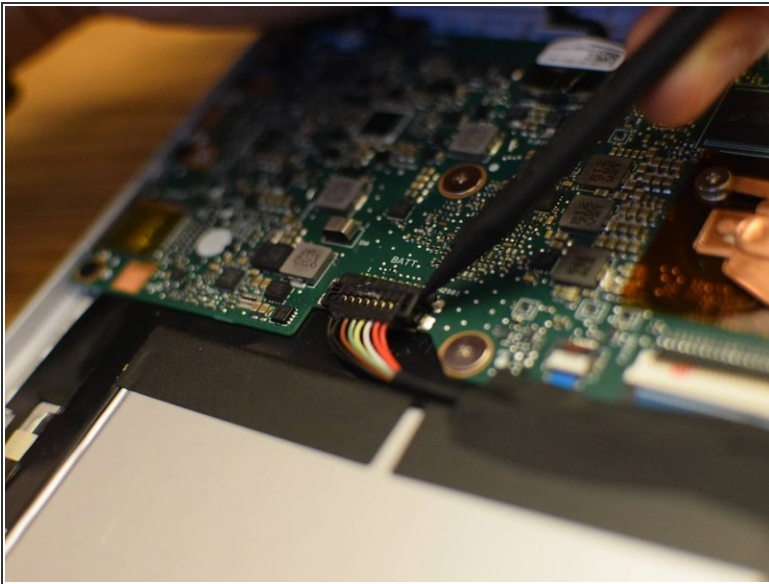


- Using a spudger or other ESD-safe plastic tool, pry the thick plastic tape and foam top off the connector, just

above the multi-colored leading to the connector.

- You may use tweezers, or fingers, to get a better grip on the tape, but be cautious not to touch metal or electrical components, as the battery is still attached.
- ☑ Save this bit of adhesive and foam. It should easily re-apply during re-attachment.

## Step 8

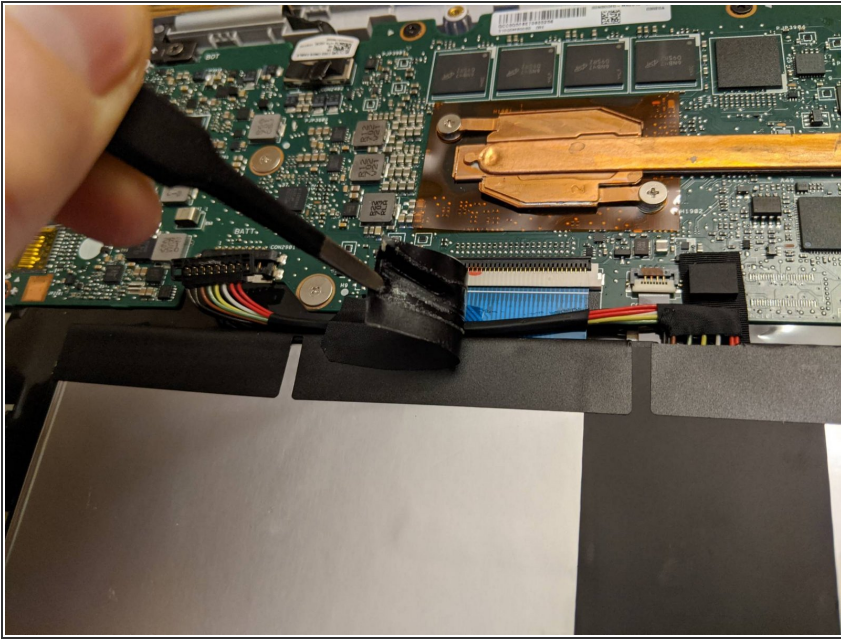


- Using a spudger or prying tool (but no metal), gently pry one side of the connector up from the board.


**⚠ Be sure not to use too much force, or pry at the connector underneath the top plastic bit.**


- After one side has popped loose from its socket, repeat the procedure with the other side, until the connector is loose.

## Step 9



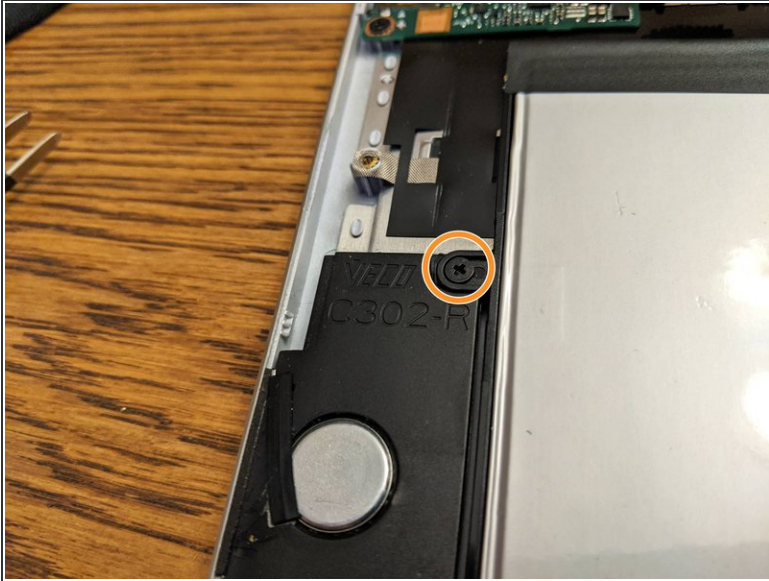
- Following the wires from the connector back to the battery, you'll find a piece of thick electrical tape about halfway up the wires. Using tweezers, peel up and remove this sticky tape with slow, even force.

 **Be very cautious with your tweezers or other prying tool, as this tape protects the fragile display cable underneath.**

-  Save this piece of sticky tape for re-adhesion during reassembly with a new battery.

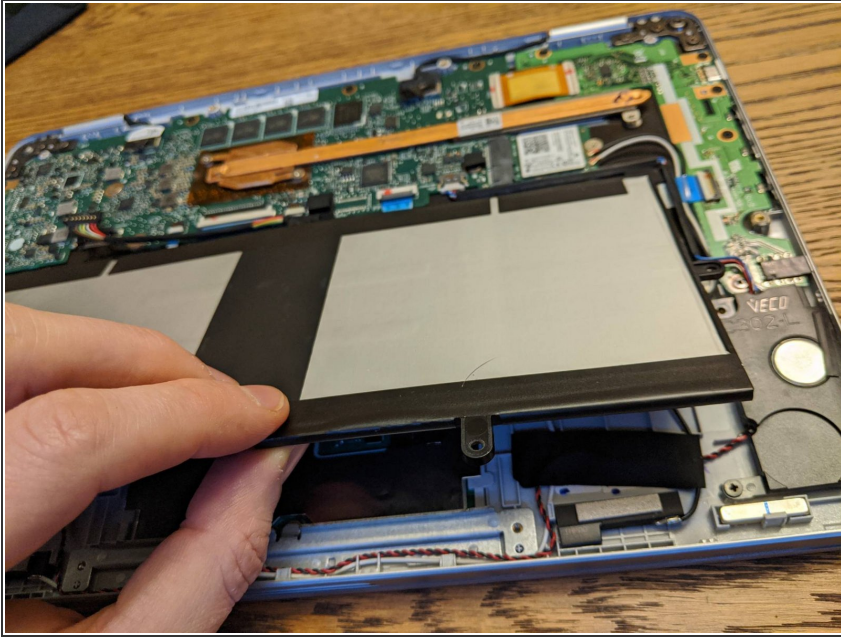


## Step 10



- Look for Phillips #0 screws to the left and right of the battery, in small bump-outs to attach the battery to the speakers on both sides. Remove these screws.
- ⓘ The ASUS C302CA I disassembled only had these two screws, but had threaded holes for other screws on the bottom. Check around the perimeter for additional screws, especially if you feel resistance during the next step.

## Step 11 — Pull out the battery



- Pulling from the bottom (near the hinges), gently lift and pull the battery out.

**⚠ If you feel any notable resistance to removing the battery, check that you have removed all its screws, and that the battery connector and its tape have been removed.**

To reassemble your device, follow these instructions in reverse order. Be sure to replace all the tap and foam pads—they help protect delicate cables and components from impacts.