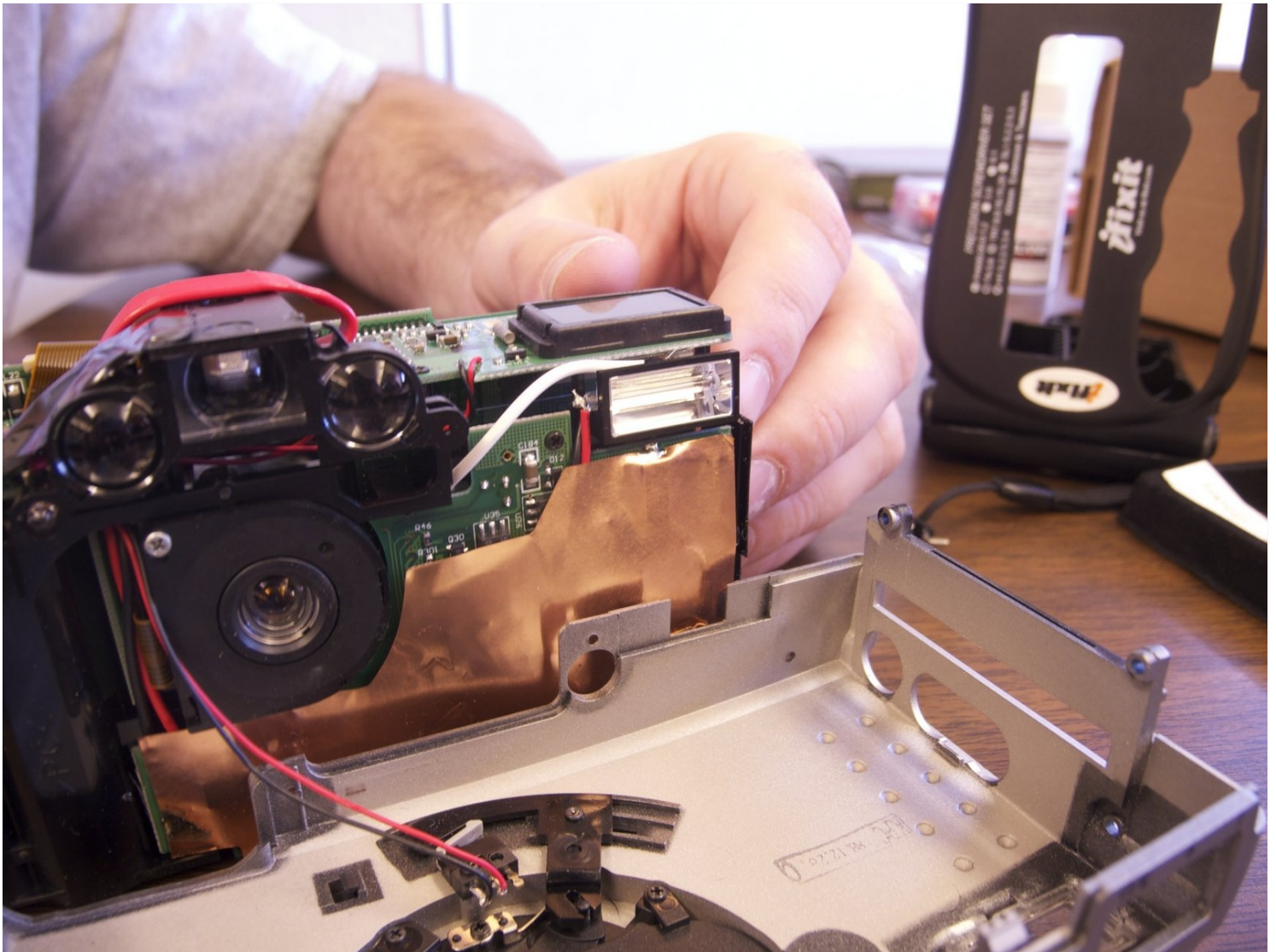




Disassembling Epson PPC650 Replacing Flash

Written By: Xan Danes



TOOLS:

64 Bit Driver Kit (1)

Spudger (1)

Soldering Workstation (1)

Step 1 — Case



- Make sure the camera is turned off here.
- Remove batteries from the battery compartment located on the bottom of the camera
- Remove SD card for the card reader compartment located on the flat side (left side) of the camera

Step 2



- Remove 2 screws on the rounded side of the camera wisdom here.

Step 3



- Remove 3 screws on the flat side of the camera
 - All silver screws go into the side of the camera that is silver
 - All black screws go into the side of the camera that is black

Step 4



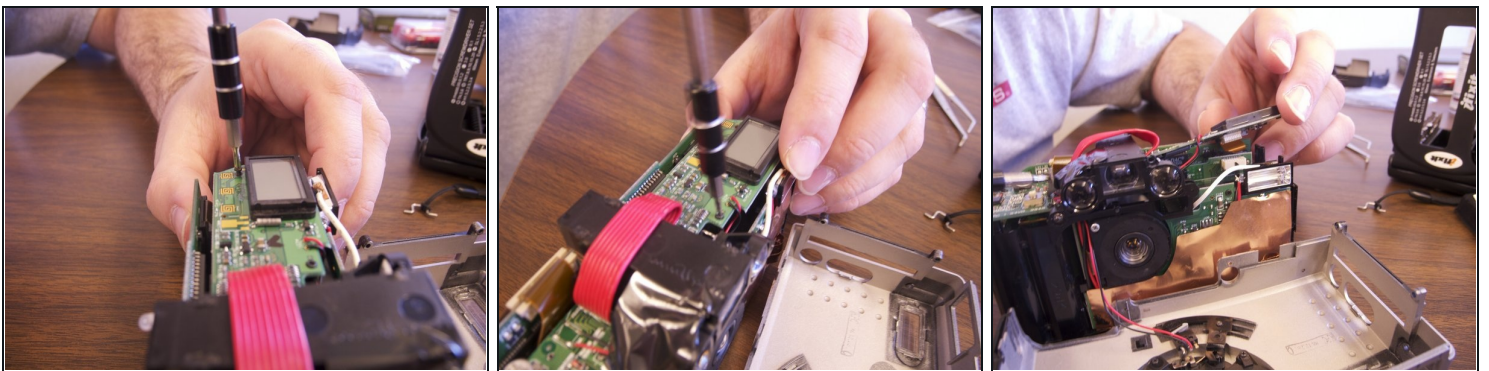
- Remove 4 screws from the bottom of the camera
- All silver screws go into the side of the camera that is silver
- All black screws go into the side of the camera that is black

Step 5



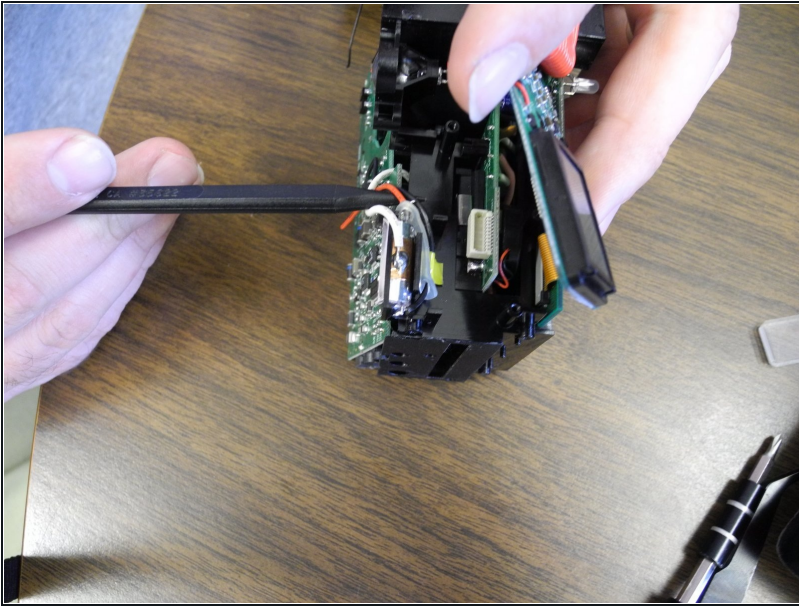
- Separate the front and back pieces of the cameras plastic casing using a spudger here.
- WARNING: When pulling the front plastic casing, be careful of the wire that are connected to the aperture control
- Use minimal force so that the plastic casing does not break
- When separating the small silver sliding indicator for view/off/playback may fall out
- The plastic viewing window located on the top of the camera may also become loose and fall out

Step 6 — Disassembling Epson PPC650 Replacing Flash



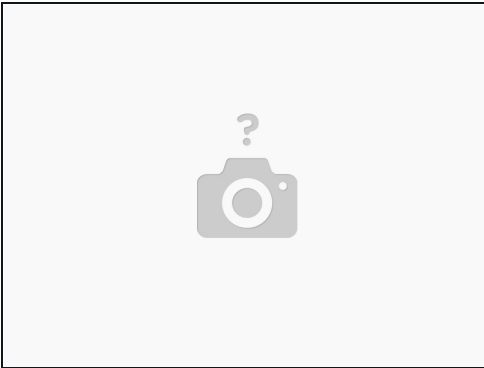
- Optional: Remove two black screws from top of camera on the flash side for more working space.

Step 7



- Remove clear rubber band holding flash in line with wiring.

Step 8



- Cut white wire, red wire, and black wire connecting flash element to circuit board by unsoldering ends

Step 9



- Connect new flash by soldering copper ends to their respective ends to new flash element.

To reassemble your device, follow these instructions in reverse order.