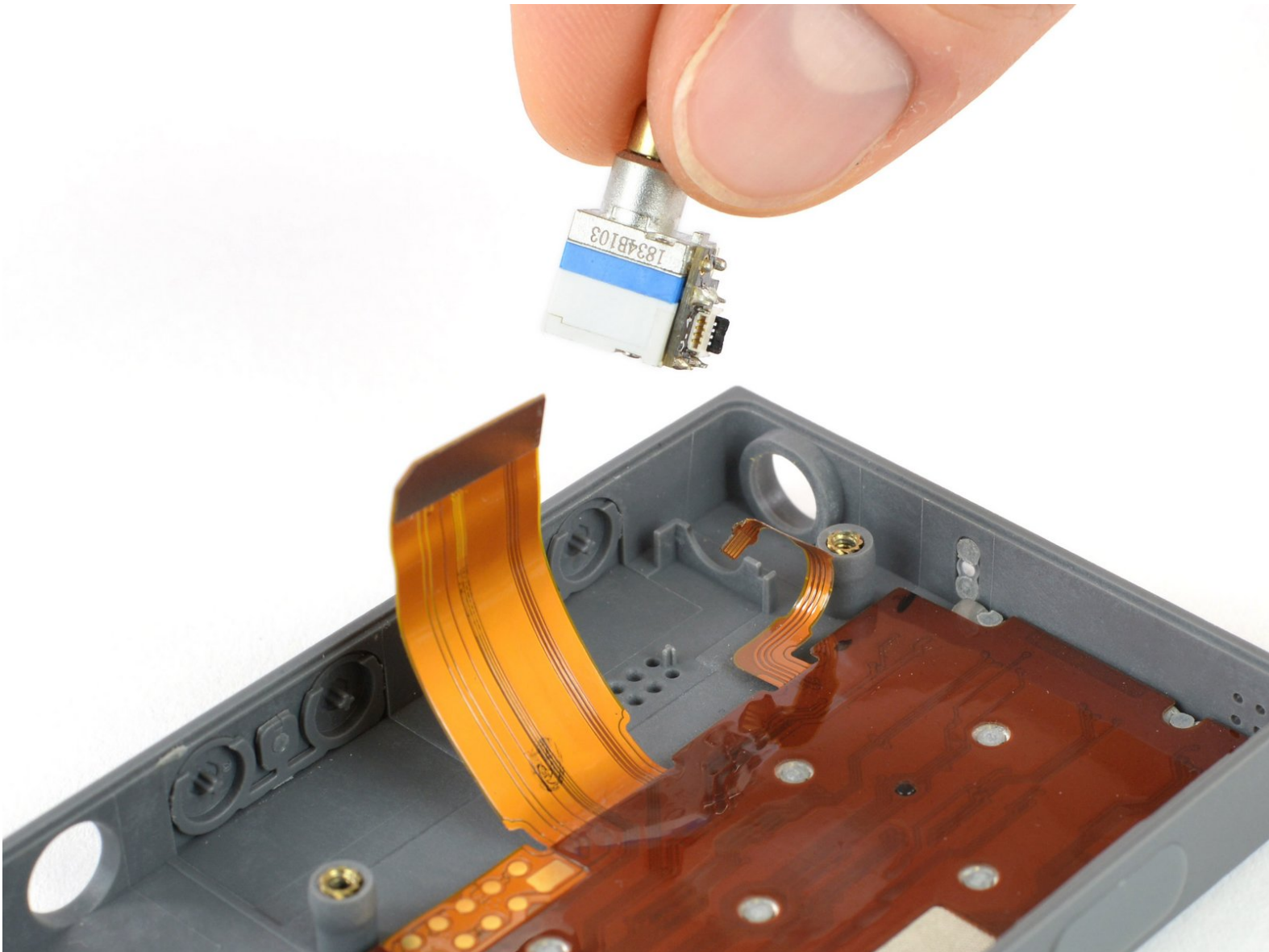




# Teenage Engineering OP-Z Volume Potentiometer Replacement

How to replace the volume potentiometer of an OP-Z.

Written By: Tobias Isakeit



## INTRODUCTION

Use this guide to replace the volume potentiometer of your OP-Z.

In case the defect was caused by a drop then the volume knob was probably damaged too. This guide will also show how to replace the knob which can be purchased separately.



### TOOLS:

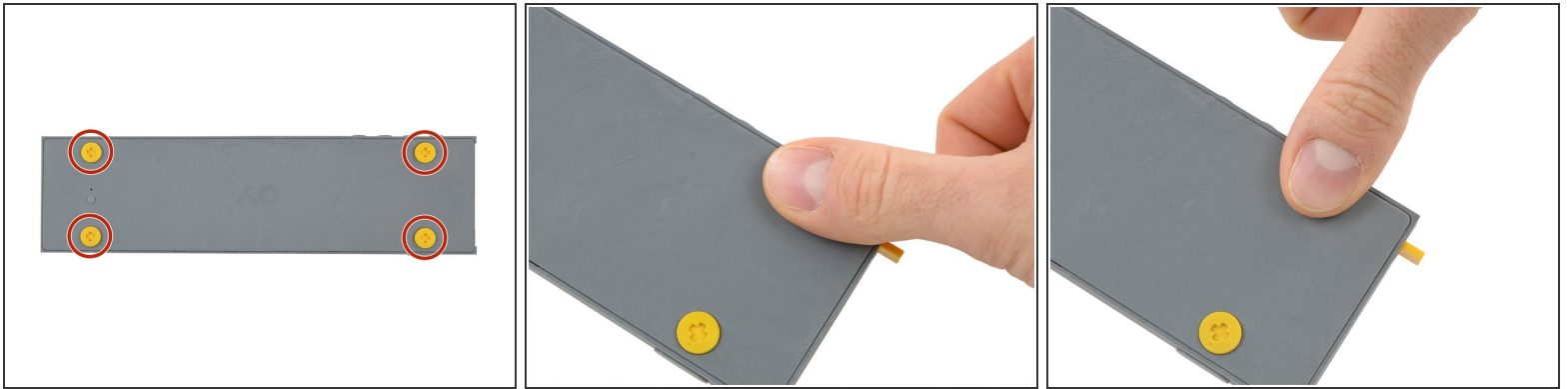
- [Spudger](#) (1)
- [T4 Torx Screwdriver](#) (1)
- [Precision Tweezers Set](#) (1)



### PARTS:

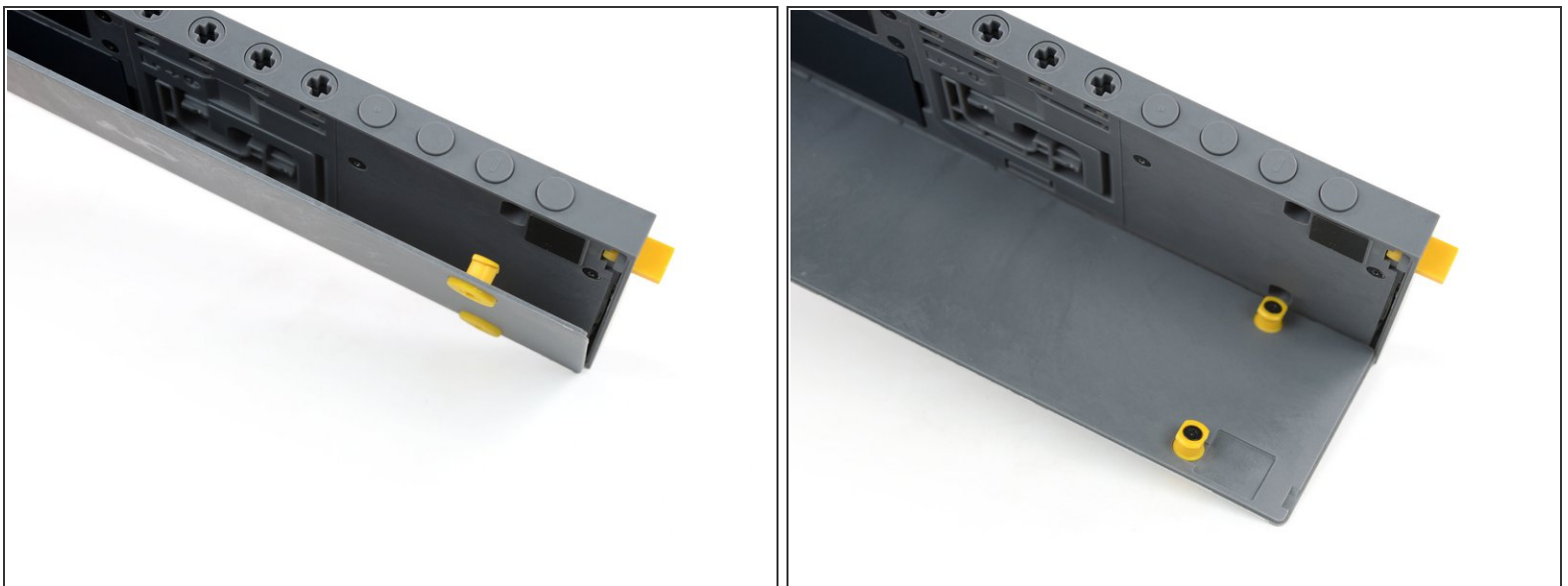
- [OP-Z Volume Pot](#) (1)

## Step 1 — Back Cover



- Unlock the four rubber feet by turning them 90° counterclockwise using your thumb or finger tip.
- ❗ There is a tiny mark on every foot facing the bottom edge of the OP-Z. After turning them they should face towards the short edge where the on/off switch is.

## Step 2



- When turning the OP-Z over again the bottom plate should come off by itself (thanks gravity).
- ❗ If the bottom plate won't come off you might want to make sure every foot is rotated correctly and gently tug on one of them.

### Step 3



- Remove the bottom plate including the rubber feet.

### Step 4 — Battery



- Use your fingernail or a spudger to lift the battery on the right side where the notch is.



## Step 5



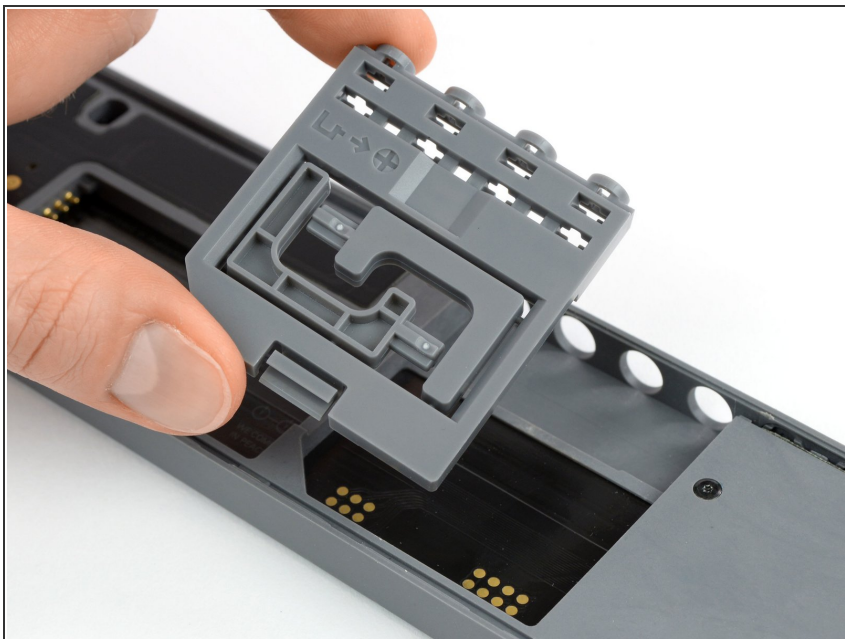
- Remove the battery.
- ☑ When installing the new battery make sure you put it in contact side first.

## Step 6 — Expansion Module



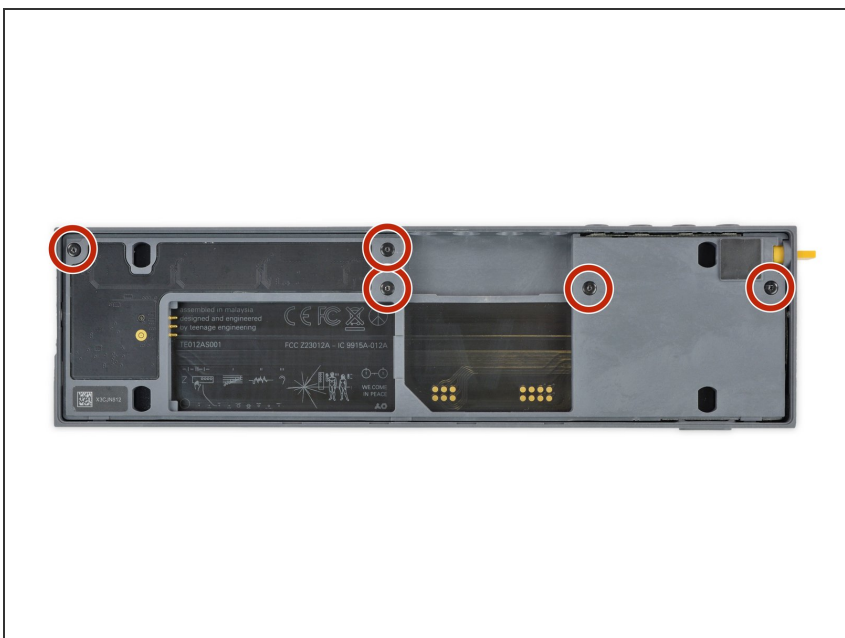
- Use your finger or a spudger to push up on the small tab on the bottom of the module.
- Lift the module up and out of its recess bottom first.

## Step 7



- Remove the module.
- ★ When inserting another module make sure you put it in outputs first. Then push down the bottom part for the tab to engage.

## Step 8 — Midframe



- Remove the five Torx T4 screws.

## Step 9



- Place a spudger in the cutout of the extension module to lift the midframe.

⚠ Be careful not to damage the highway flex cable underneath.

⚠ Don't remove the midframe yet. It is still connected to the rest of the OP-Z.

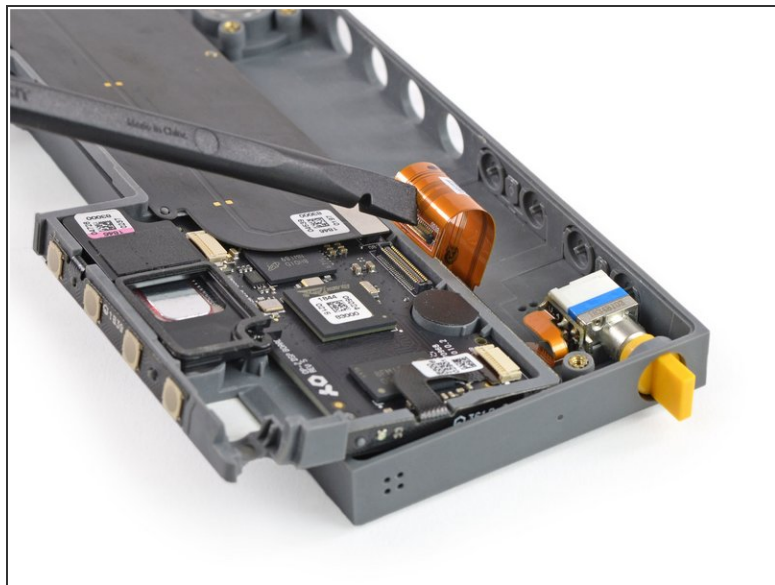
## Step 10



- Flip the midframe over to gain access to the flex cable connector underneath.

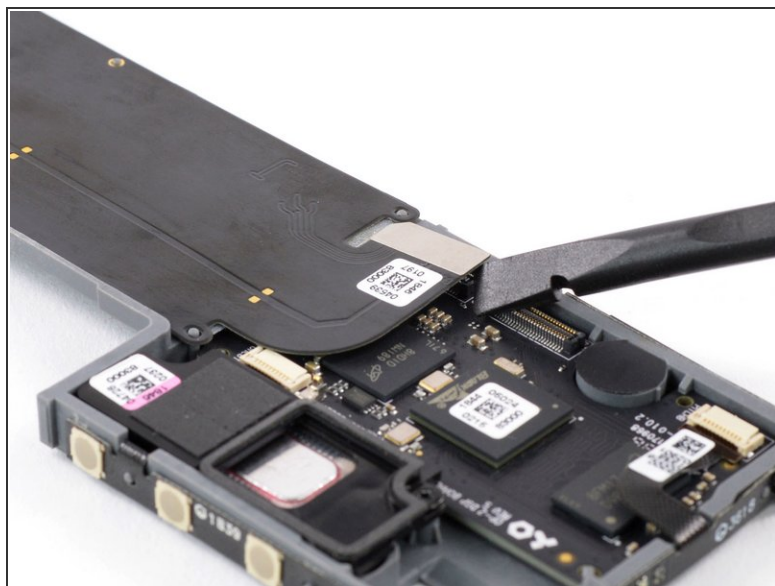
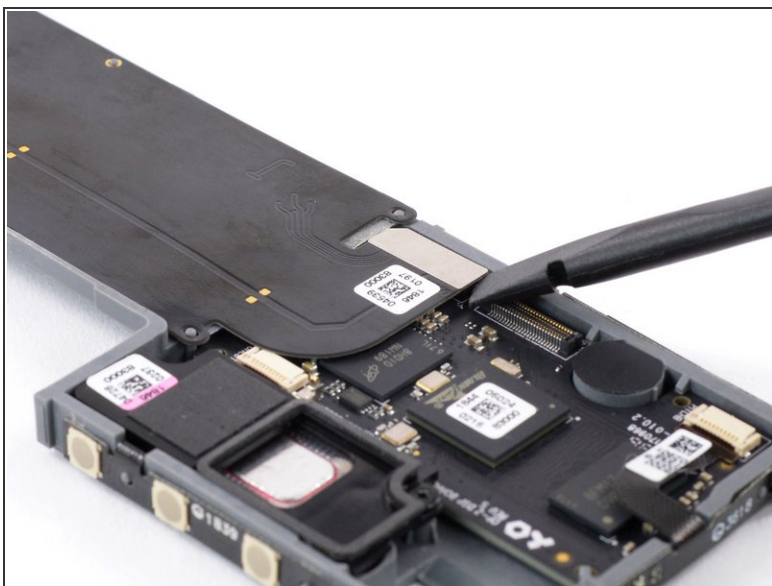


## Step 11



- Use the flat end of a spudger to disconnect the flex cable from the front panel assembly.

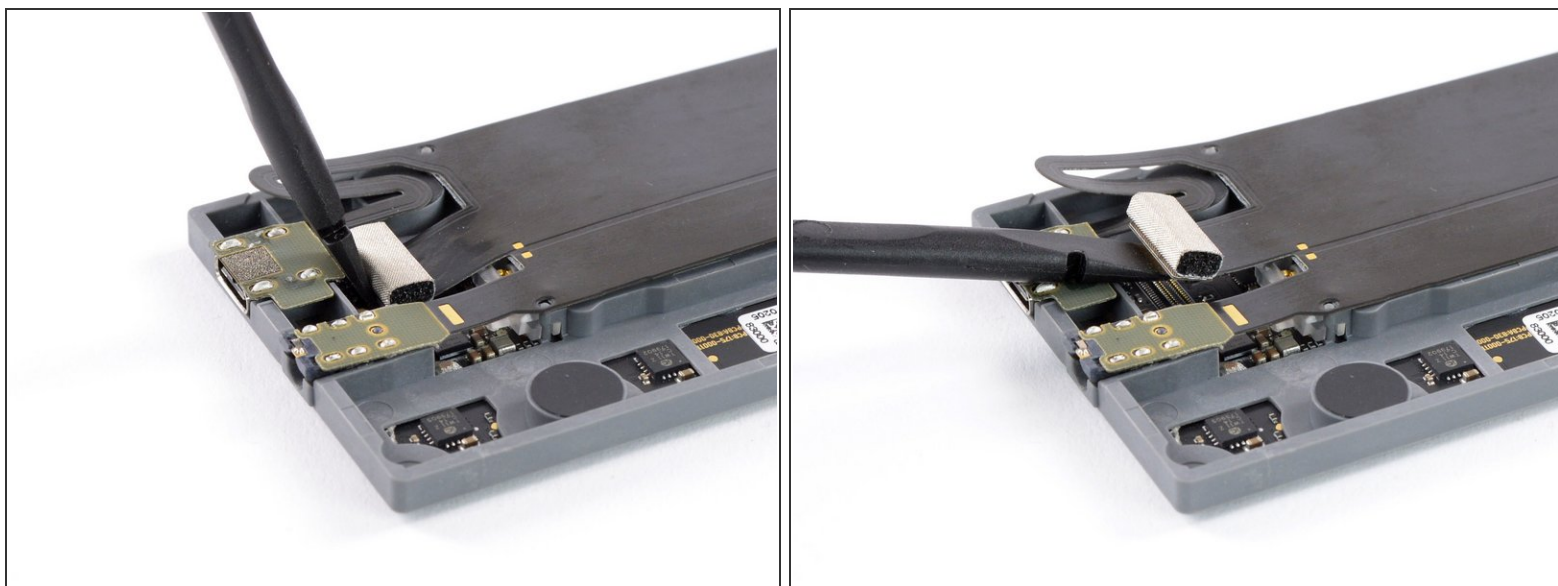
## Step 12 — Highway Flex Cable



- Use a spudger to disconnect the highway flex cable from the DSP board.



## Step 13



- Use the spudger to disconnect the flex cable from the encoder board.

## Step 14



- Slowly pry the USB-C connector out of its recess. Use the flat end of a spudger on the small nib on the USB-C board.
- ⓘ The connector is slightly glued down.

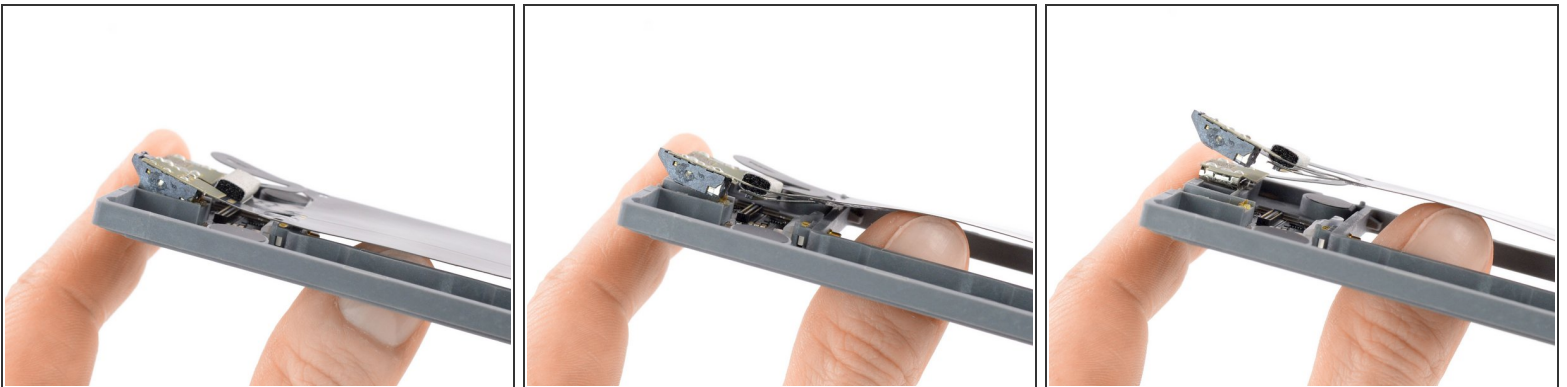
## Step 15



- Insert the pointy end of the spudger into the line-out jack and lever it up carefully.

ⓘ The jack connector might sit tight and is slightly glued down.

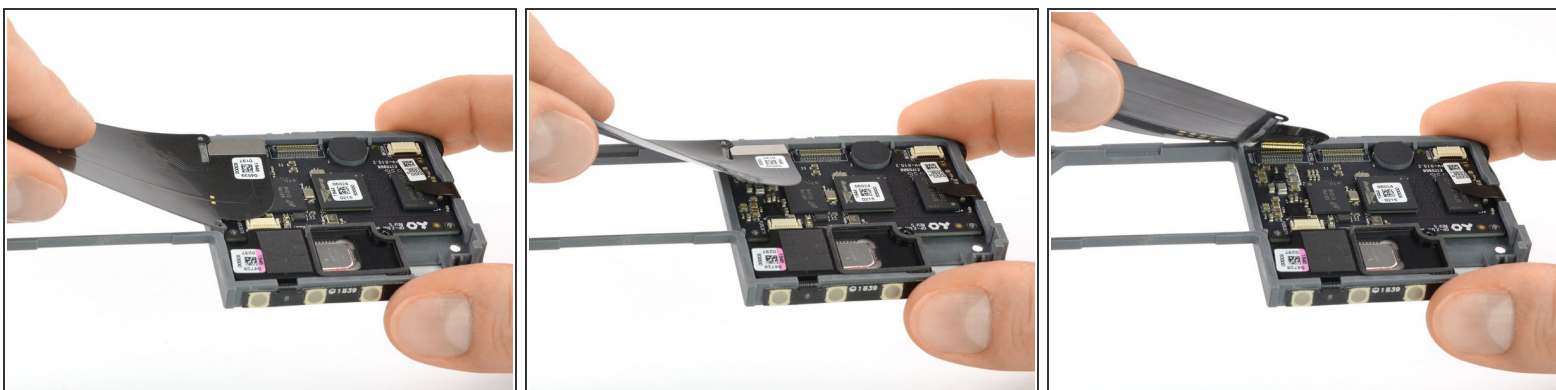
## Step 16



- The highway flex cable is slightly adhered to the midframe. To remove it, gently push it out from underneath.

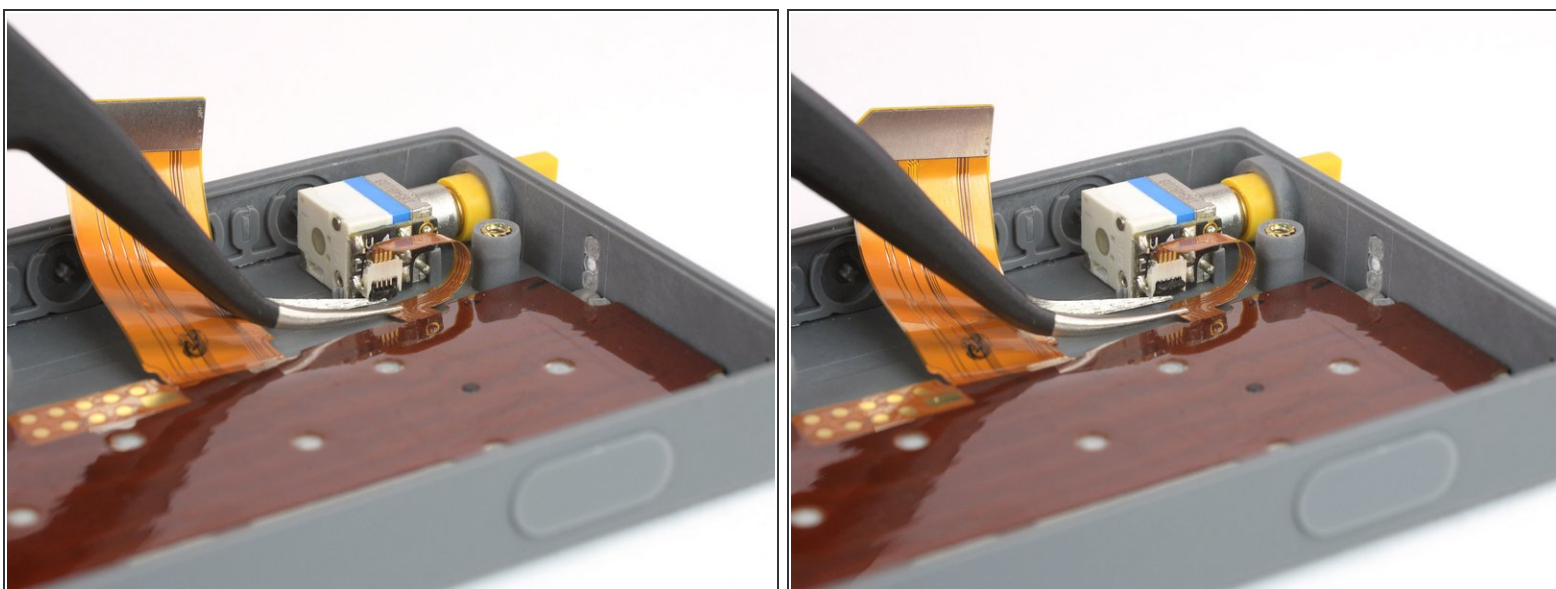
ⓘ A small transparent part may pop out. This is the light guide for the bluetooth indicator. Just hinge it back onto the midframe as [seen here](#).

## Step 17



- Peel the highway flex cable off the midframe and remove it.

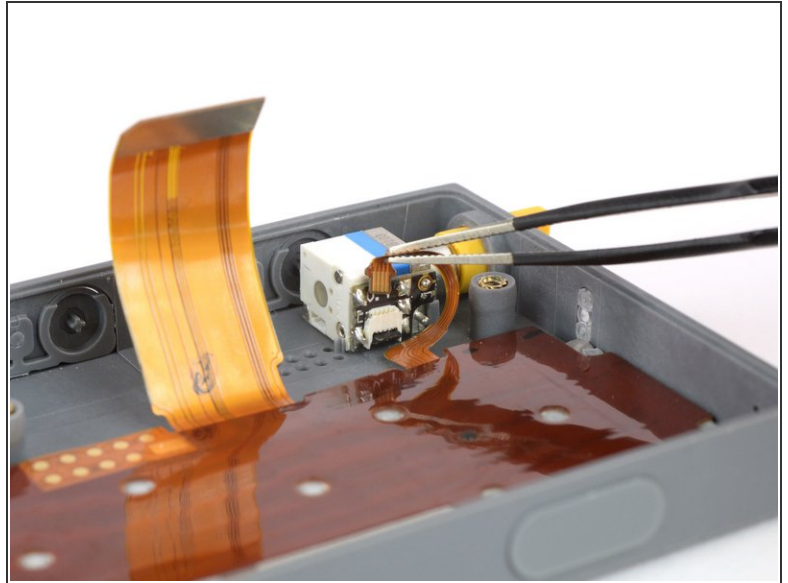
## Step 18 — Volume Pot



- Use one arm of a tweezer to lift the small black flap of the ZIF connector.

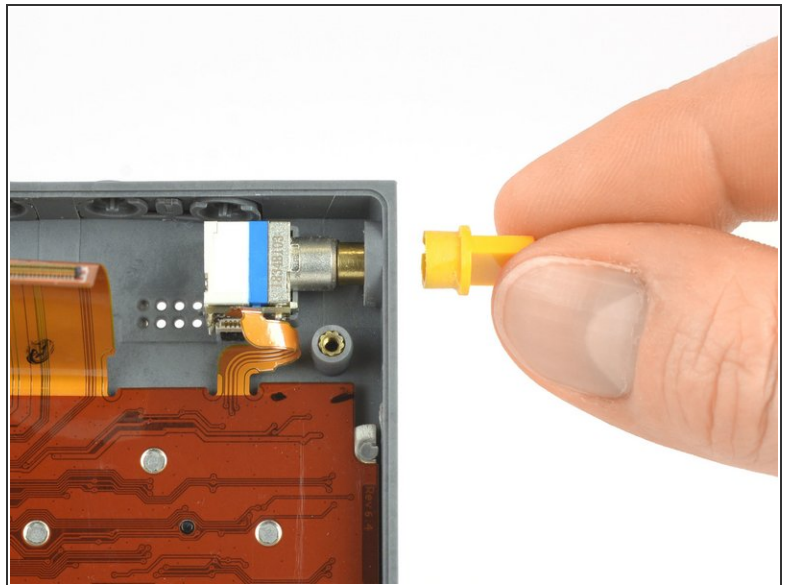
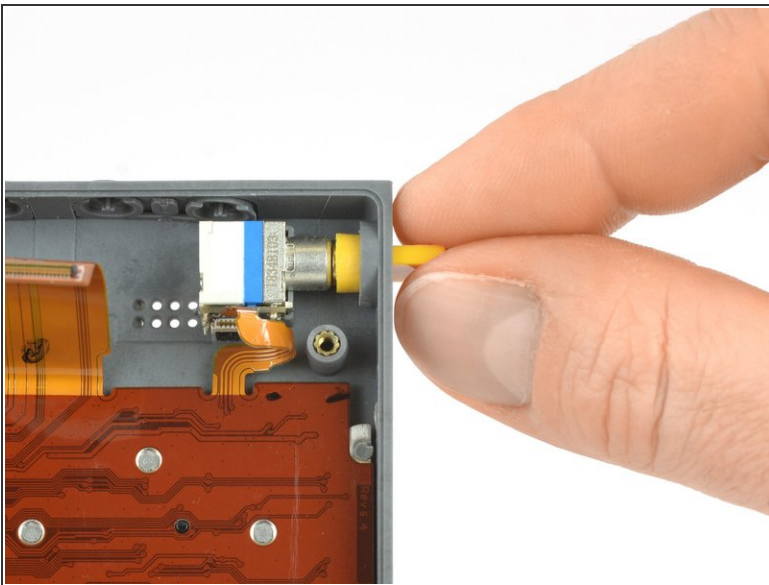


## Step 19



- Use a pair of flat nose tweezers to pull the small flex cable up and out out the ZIF connector.
- ☒ When reassembling make sure to insert the flex cable all the way.

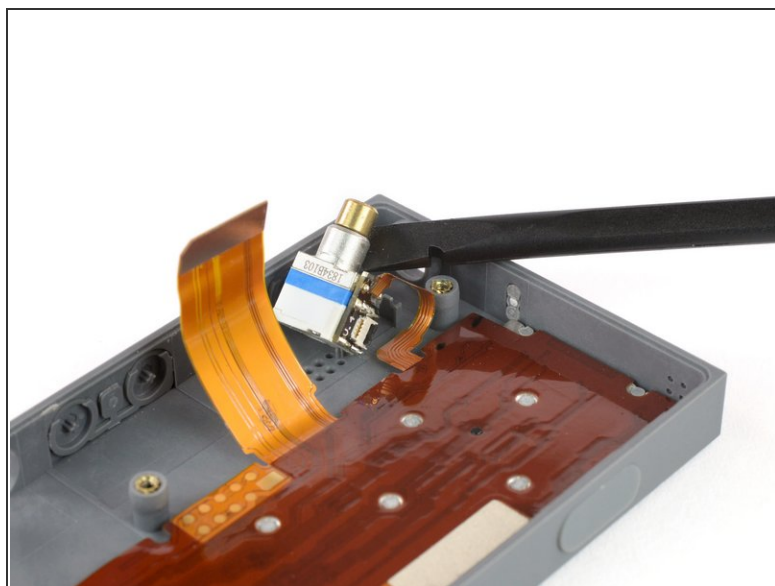
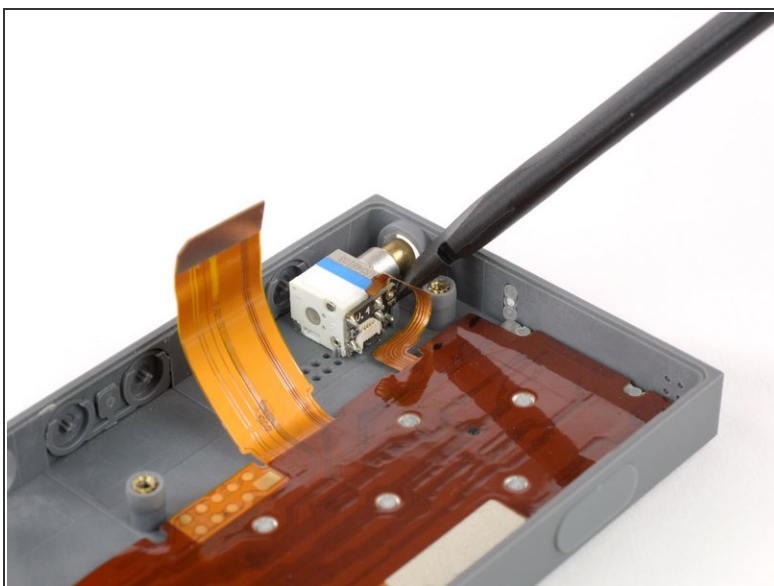
## Step 20



- Grab the volume knob with your fingers or a pair of pliers and pull it off its axle.

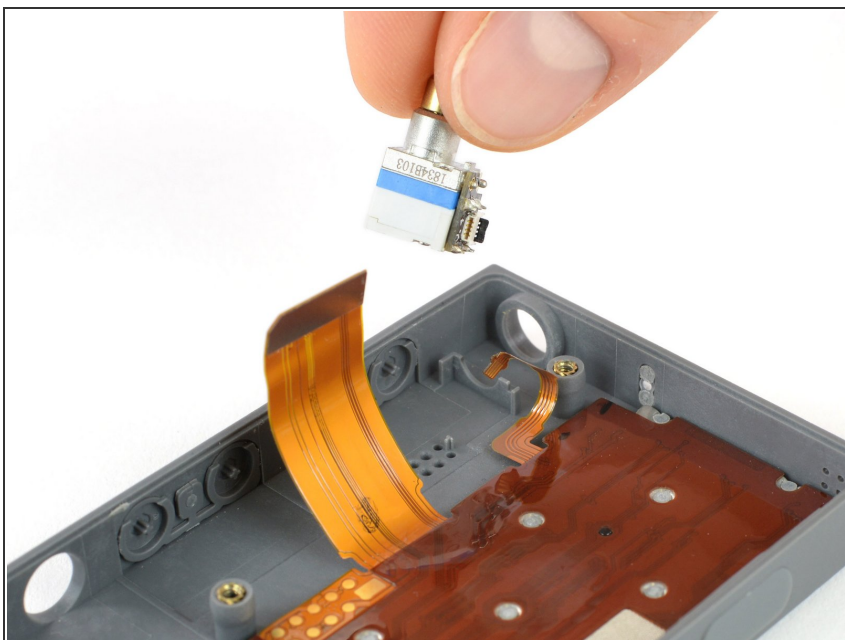


## Step 21



- Use a spudger to lever up the axle of the volume potentiometer. This way it will clear the frame's cutout.
- ⓘ The volume pot is slightly glued down.

## Step 22



- Remove the volume potentiometer.

To reassemble your device, follow these instructions in reverse order.