



# Toshiba Satellite M55-S135 RAM Replacement

Replace the RAM in your Toshiba Satellite.

Written By: Matthew Trinh



## INTRODUCTION

This guide illustrates how to replace the RAM in your Toshiba Satellite.



### TOOLS:

- [Phillips #00 Screwdriver](#) (1)



### PARTS:

- [PC2700 1 GB RAM Chip](#) (1)

## Step 1 — RAM



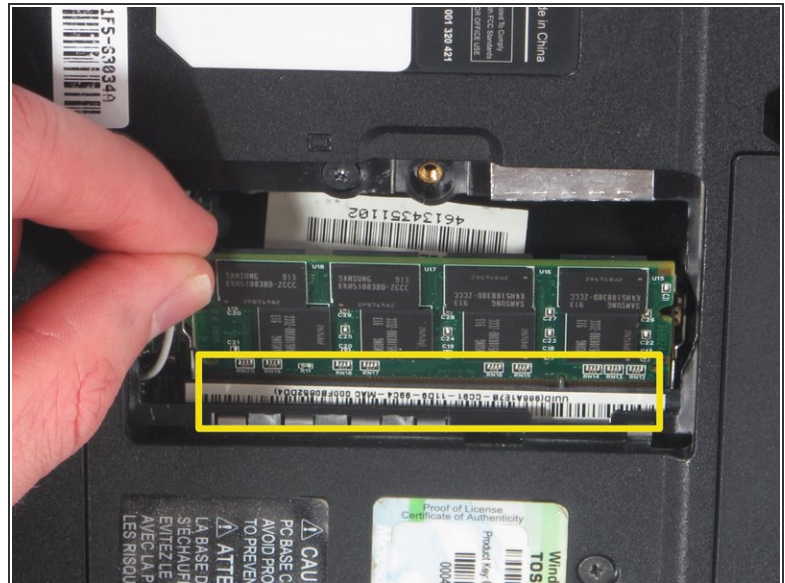
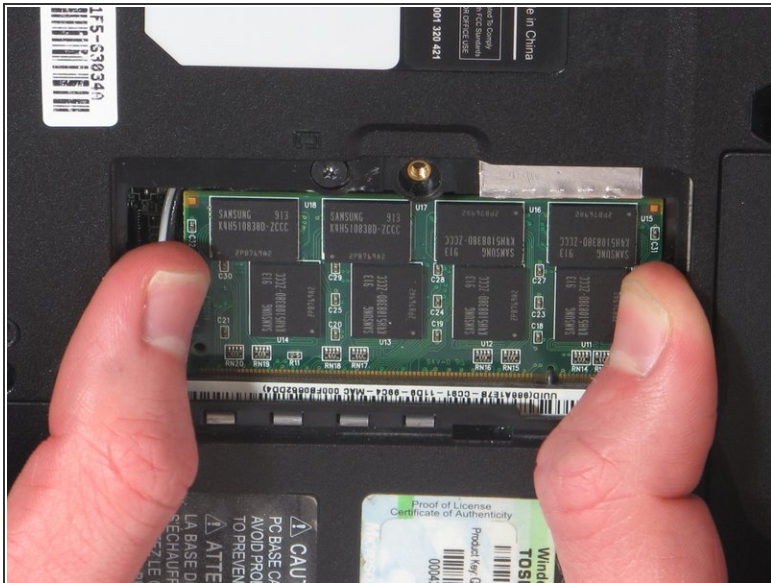
- Orient the laptop so that it is closed, faced down and has the battery facing away from you.
- Use the Phillips 00 screwdriver to remove the 7.50mm screw from the panel.

## Step 2



- ⚠ Carefully remove the cover to reveal the RAM compartment.

## Step 3



- Rotate the laptop 90 degrees clockwise.
- Pull back the two silver clips that hold the RAM in place.
- Gently pull the RAM out of the slot and lift up to remove the RAM from the laptop.

To reassemble your device, follow these instructions in reverse order.