



SRM Power Meter Battery Replacement

In case you are far away from Germany or don't...

Written By: midiman127



INTRODUCTION

In case you are far away from Germany or don't want to spend the extra money sending your PM to SRM, this guide shows you how to attempt a DIY. I had no knowledge of the product design or variants of the mechanical aspects. This guide was created through observation and basic electronics knowledge. I did perform the battery swap on my own PM that I continue to use for training.

In case you are lucky to get a later model, I believe the battery replacement can now be performed by yourself.

Good Luck!

TOOLS:

Wire Cutters/Side Cutters (1)
Soldering Iron (1)
Lead-Free Solder (1)
Heat-Shrink Tubing (1)
6-in-1 Screwdriver (1)
Pocket knife (1)

PARTS:

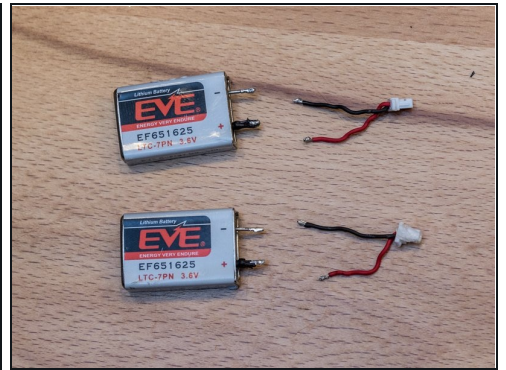
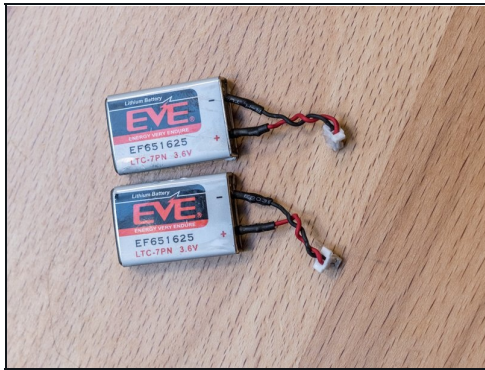
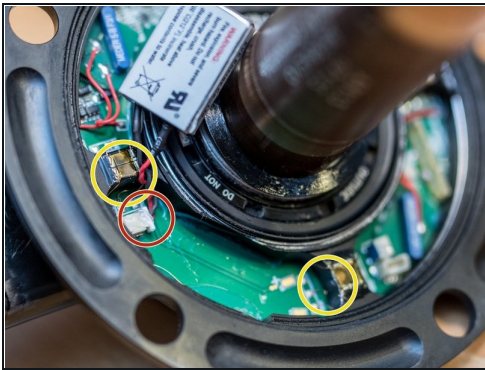
Battery EF651625 750mAh (1)

Step 1 — Open the Power Meter



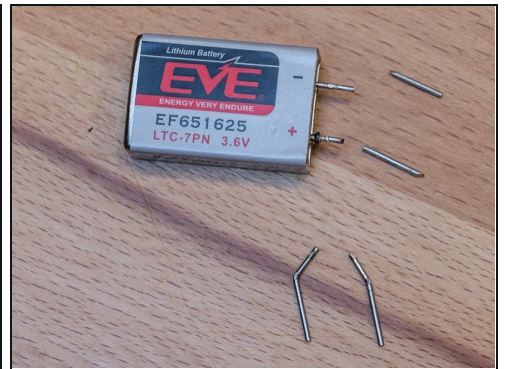
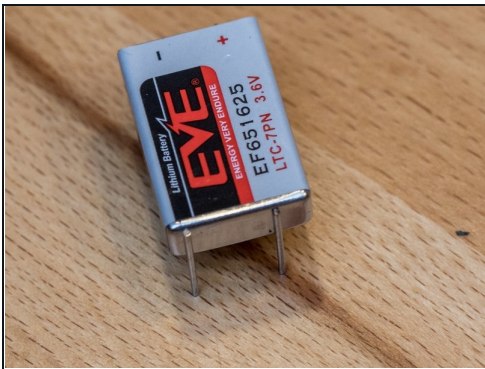
- Remove the chain rings. On some models there are little screws to open the cap. On my FSA Model there is a tab to pop open the cap.
- Make sure the seals stay intact.
- There are 2 batteries glued in. They are connected with a power cable that has a little 2 pin plug.

Step 2 — Remove Batteries



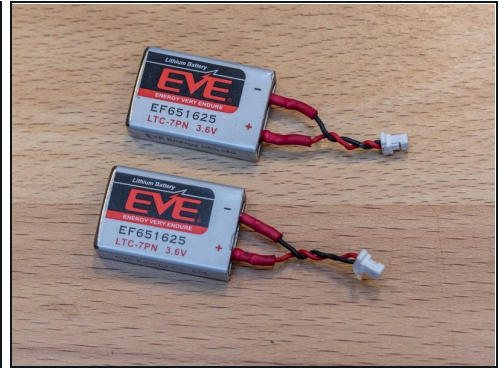
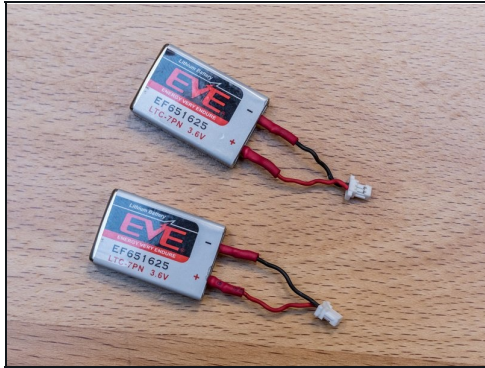
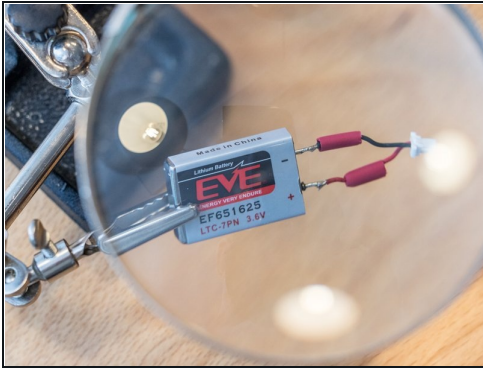
- **ATTENTION:** Make sure you don't damage the thin copper wires marked in yellow.
- Unplug the batteries from the circuit board. (red)
- With the [solder gun](#) remove the cables from the old batteries. Make sure not to melt the cables or plug.

Step 3 — Prepare new Batteries



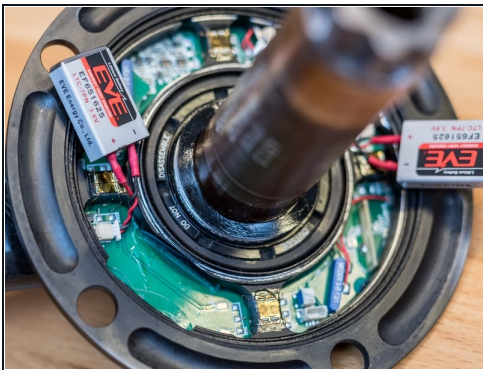
- My batteries had mounting pins attached to the silver side. They have to be removed with pliers.
- The terminal pins have to be bent straight.
- Finally the pins have to be cut to the same length as the old batteries.

Step 4 — Attach Wires



- Add heat shrink to cables and solder them to battery. Red to (+) and black to (-)
- Push the heat shrink up to cover the entire pin and soldering connection.
- Twist the wired back together gently.

Step 5 — Insert the Batteries



- Attach the new batteries. There is a + on the circuit board on the side where the red wire goes.
- Push the batteries gently back into place.
- Connect the power meter and check the battery status of the sensor. On my Garmin I see NEW.