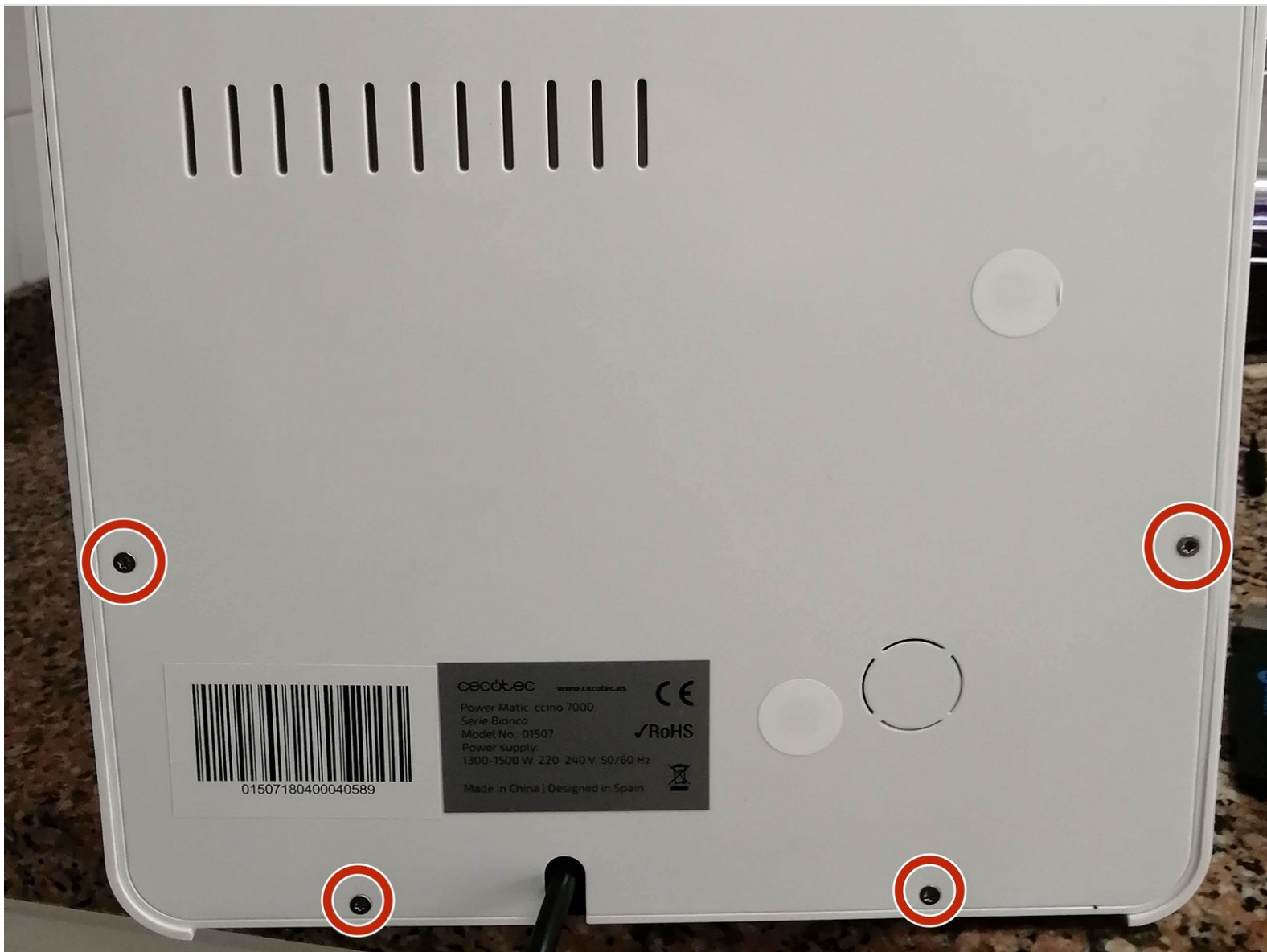




# Automatic Coffee Machine Cecotec Power Matic-Ccino 7000 or Rooma RM-A7 Disassembly

To get inside the machine and make some repair in the main components.

Written By: Egas



---

## INTRODUCTION

This is a basic guide to disassembling your Cecotec Power Matic-Ccino 7000 or Rooma RM-A7 to access the core components of the appliance. If you are noticing issues with the burr grinder, water pump, heating element, control board, or any other component on the interior of the device, this guide will instruct you on how to access those parts. This will also allow you to open up the machine for cleaning and descaling of the brewing components.



### TOOLS:

- [64 Bit Driver Kit](#) (1)
  - [T10 Torx Screwdriver](#) (1)
  - [4 mm Hex Key](#) (1)
  - [Phillips #2 Screwdriver](#) (1)
  - [Probe and Pick Set](#) (1)
-

## Step 1 — Taking Main cover off



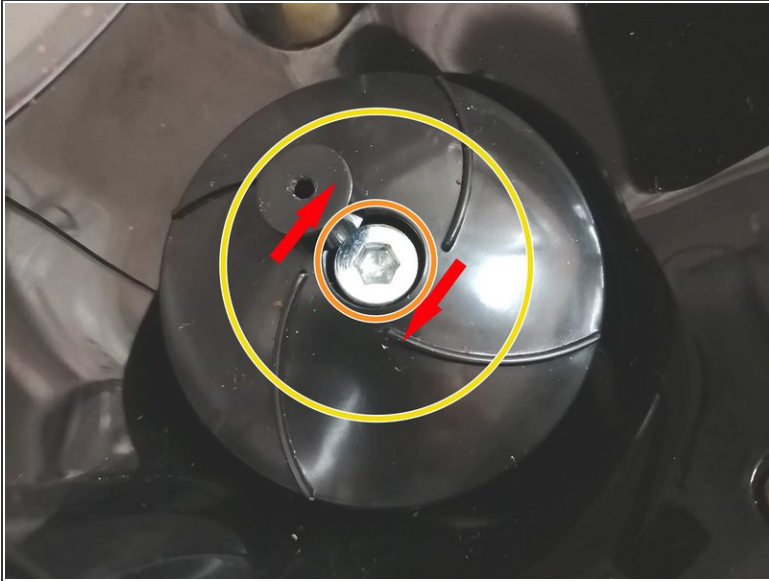
- Using a T10 screwdriver, remove the **eight** screws located on the rear panel of the device (4 towards the bottom, and 4 towards the top).

## Step 2



- Unscrew **one** PH2 screw.
- Use a spudger or a thin curved tool such as a dental pick to remove the bean hopper of the burr grinder.
- Remove the grind selector by pulling the dial directly away from the machine which will remove it from the housing.

### Step 3

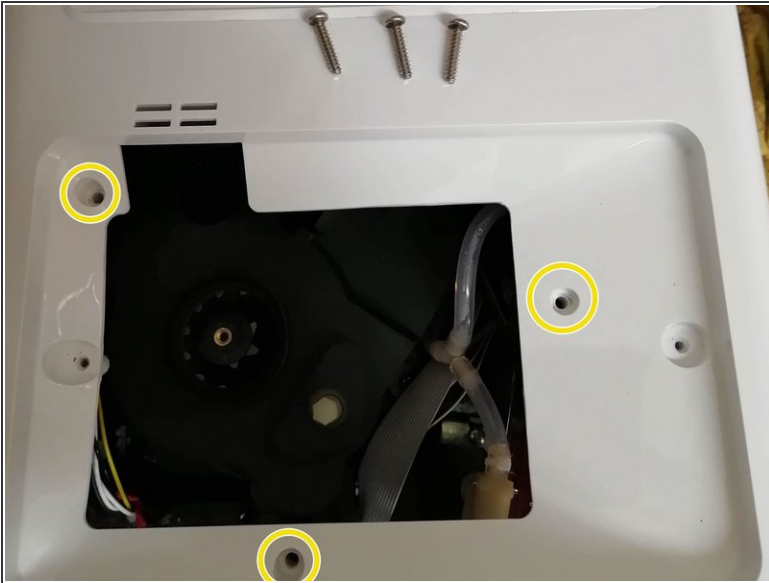


**⚠ The Hex screw must be unscrewed in the clockwise direction. Failure to do so could result in damage of the grinding mechanism.**

- Unscrew the **one** 4mm Hex in a clockwise fashion and remove the black plastic cover over the burrset.
- Remove the black plastic cover over the burr set.
- ⓘ The burr set should not be completely visible.

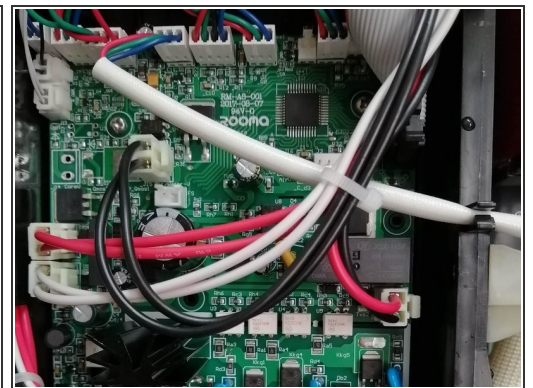
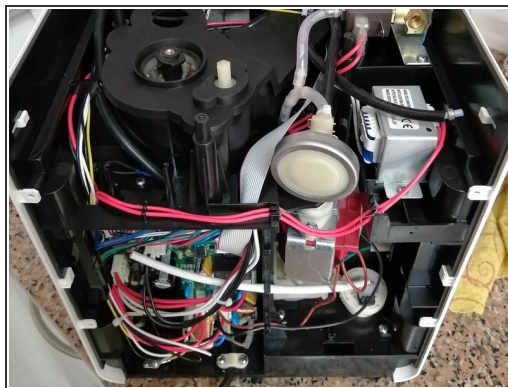


## Step 4



- Unscrew the **three** PH2 screws.
- ⓘ Slide the top panel backwards to remove it.

## Step 5



- ⓘ Now you should have access to the internal components of the appliance.

To reassemble your device, follow these instructions in reverse order.