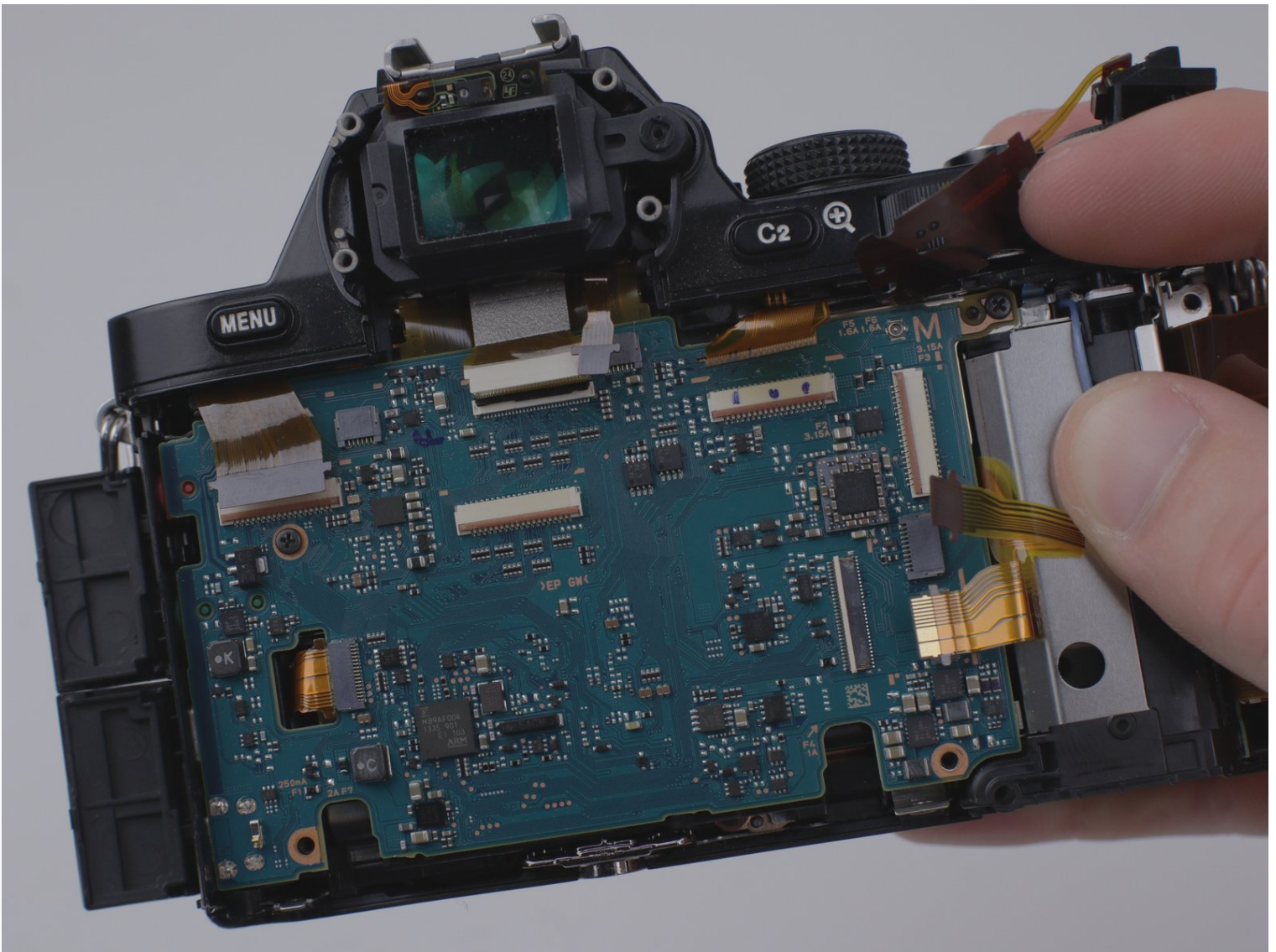




Sony a7 Motherboard Replacement

This replacement guide will address how to...

Written By: Jeffrey Coleman



INTRODUCTION

This replacement guide will address how to remove a faulty motherboard from a Sony a7 model number ILCE-7 camera. The motherboard fulfills the role of the brain of the camera. It serves as the centralized hub to connecting all other processes inside the camera together. The LCD screen and memory card are examples of other parts that rely on the motherboard. Provided in this replacement guide are the steps needed to properly remove the motherboard.

If the camera fails to boot up in the proper sequence, it is possible that the motherboard has failed. Before beginning the replacement guide, please refer to the [troubleshooting](#) page, for helpful information and simple remedies before having to go through the motherboard removal process.

TOOLS:

[Phillips #00 Screwdriver](#) (1)

[Tweezers](#) (1)

Step 1 — Battery



- Flip the camera upside down, and observe where the battery door and switch are located on the camera.
- ★ This replacement guide is using a cardboard and tape placeholder to simulate the battery, battery door, and switch.

Step 2



- Slide the switch over to the right side to open the battery door.
- ☑ This replacement guide is using a cardboard and tape placeholder to simulate the battery, battery door, and switch.

Step 3



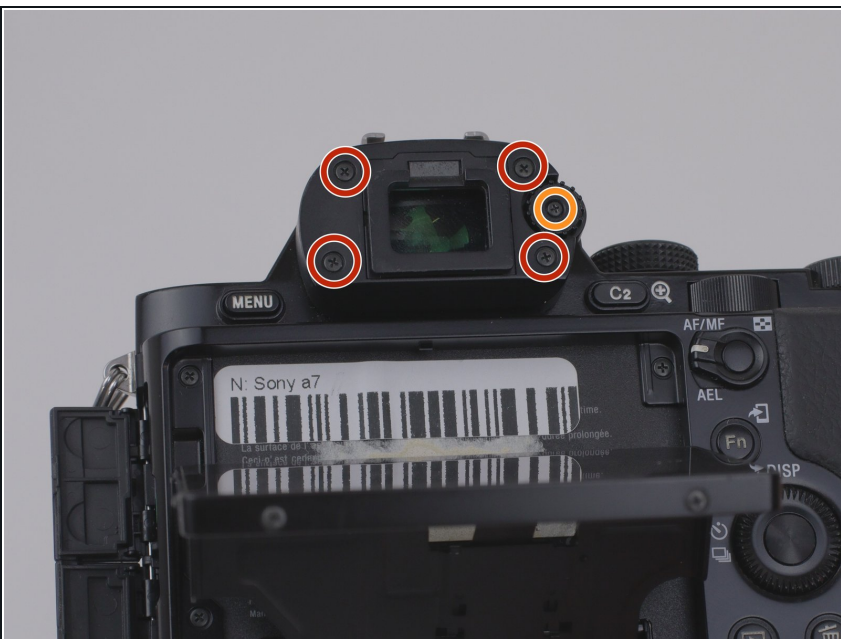
- Depress the blue lever to allow the battery to pop out slightly.
- ☑ This replacement guide is using a cardboard and tape placeholder to simulate the battery, battery door, and switch.

Step 4



- Remove the battery from the camera.
- ❗ Make sure to hold onto the battery firmly when removing it from the camera, as it could slide out and fall.
- ★ This replacement guide is using a cardboard and tape placeholder to simulate the battery, battery door, and switch.

Step 5 — Rear Disassembly



- Remove the eyepiece cover by removing the four M1.5x4mm screws with a PH00 Phillips screwdriver.
- Remove the M1.5x4mm screw that retains the adjustment wheel with a PH00 Phillips screwdriver.

Step 6



- Remove the six M1.5x4mm screws with a PH00 Phillips screwdriver.

Step 7



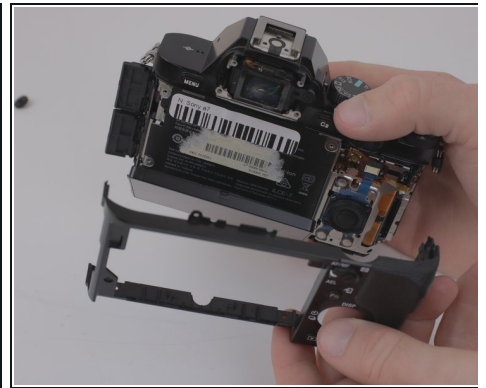
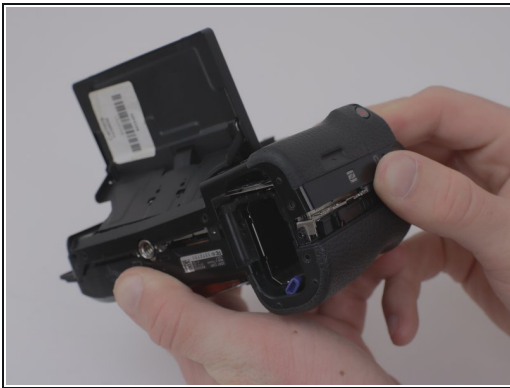
- Remove one M1.5x4mm screw with a PH00 Phillips screwdriver.

Step 8



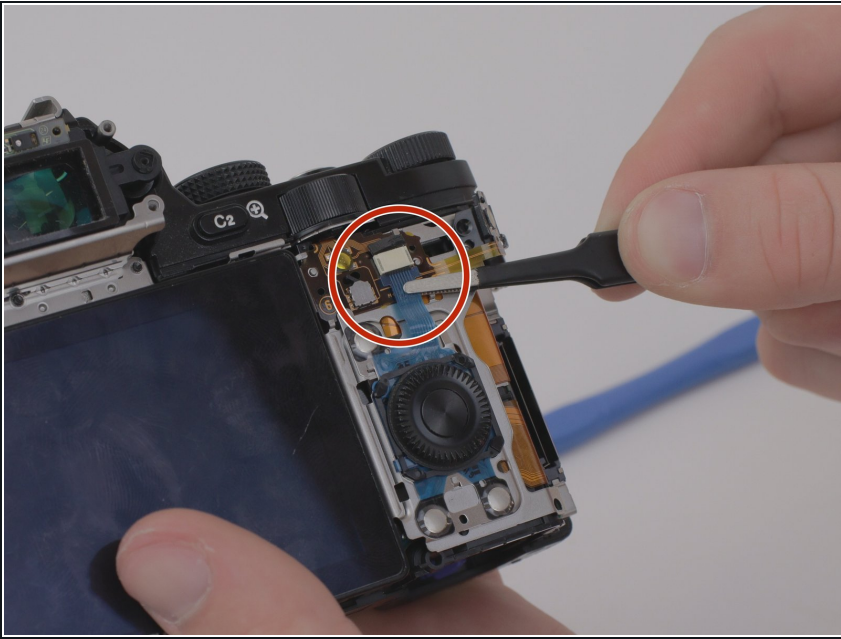
- Remove the four M 1.5x2mm screws.

Step 9



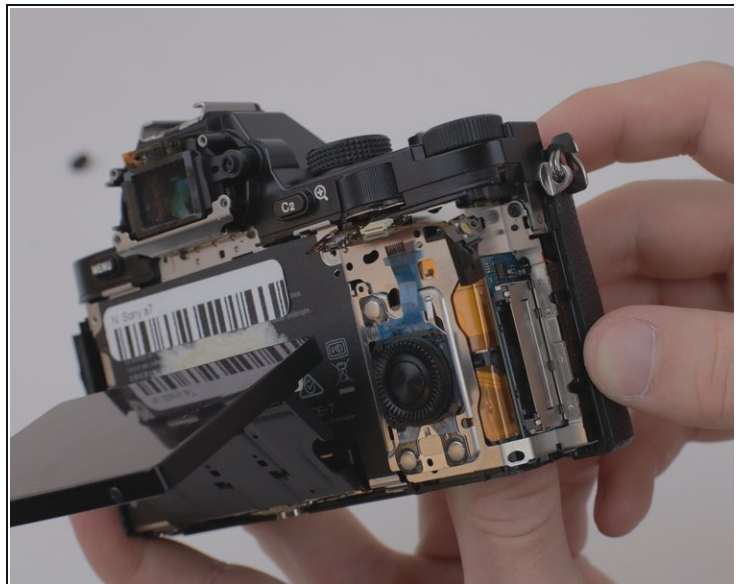
- Once the screws have been removed, unsnap and lift the rear plastic cover off of the camera.

Step 10



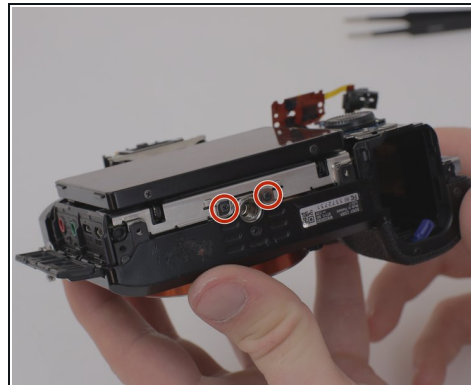
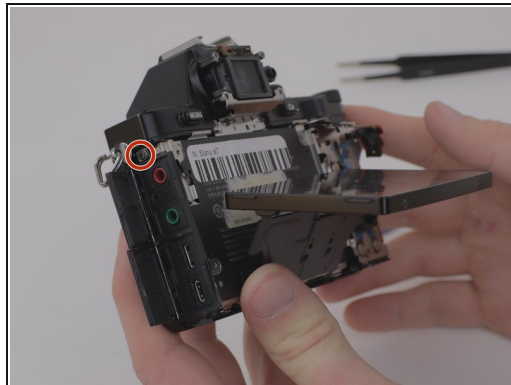
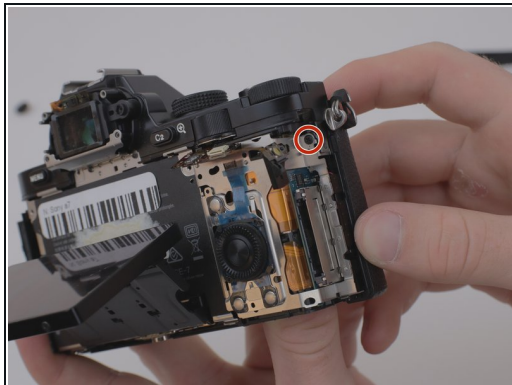
- Using the blunt tweezers, remove the blue ribbon cable.
- ❗ For additional guidance and tips on how to properly attach and detach connector cables, please reference *iFixit's* guide to connector cables [here](#).

Step 11



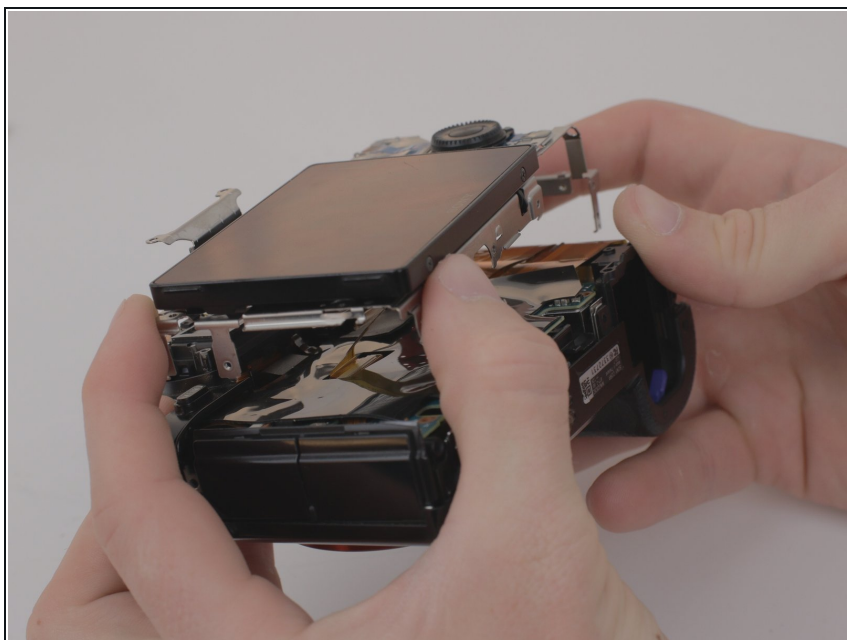
- Place the tweezers on the side of the circuit board and lift it from underneath so as to free it from the three retaining tabs.

Step 12



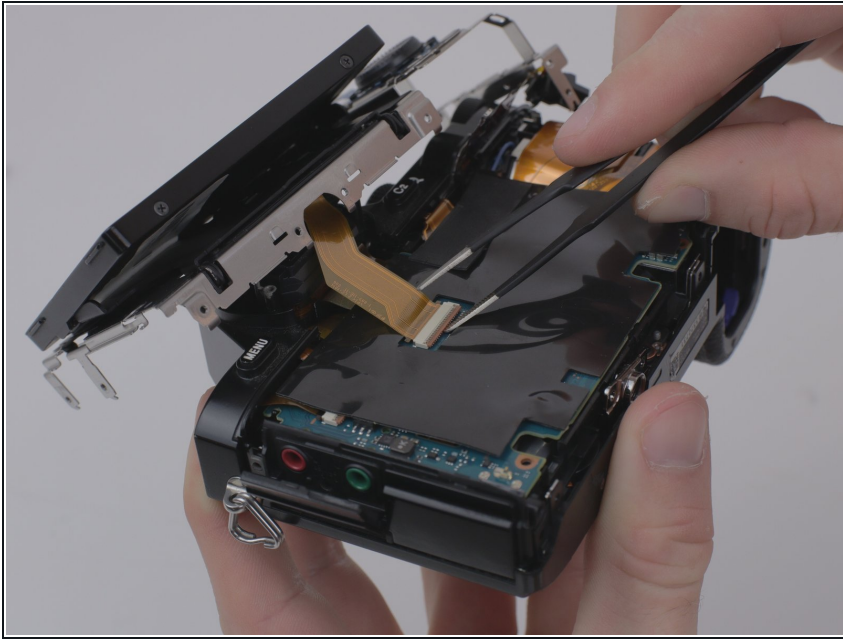
- Remove four M1.5x4mm screws using a PH00 Phillips screwdriver.

Step 13



- Lift the metal plate and LCD screen away from the camera body.

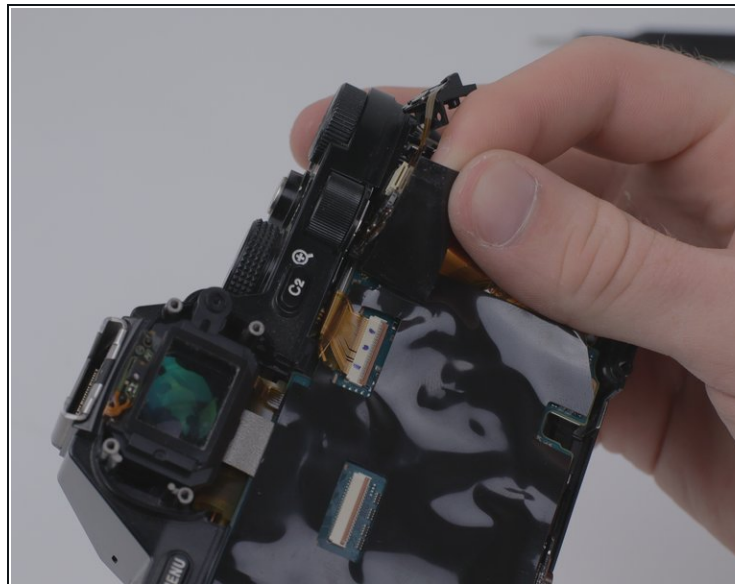
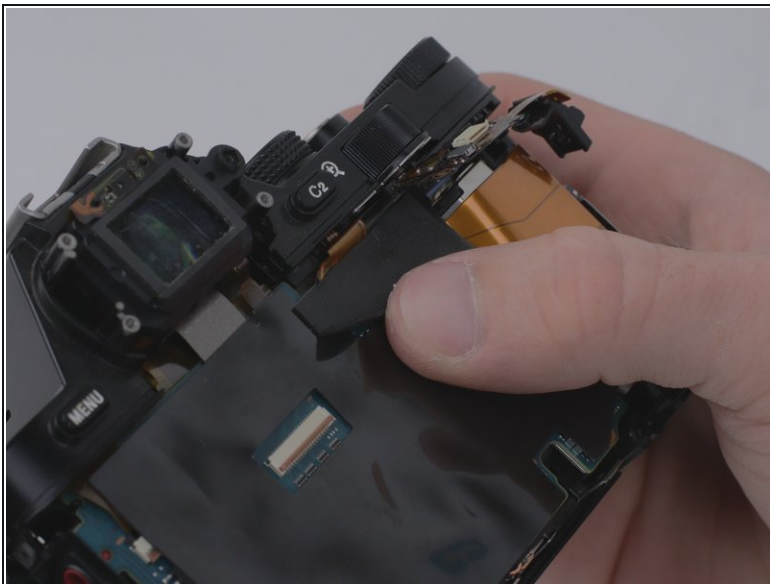
Step 14



- Detach the amber ribbon cable from the motherboard.

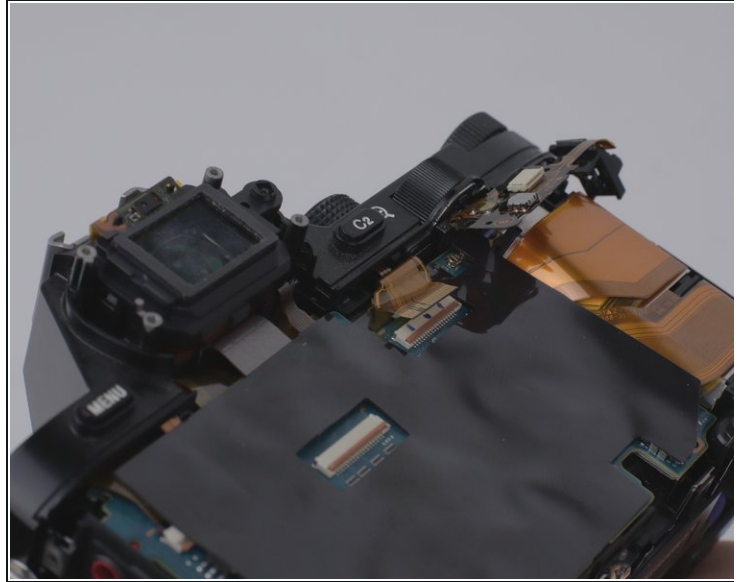
ⓘ For additional guidance and tips on how to properly attach and detach connector cables, please reference *iFixit's* guide to connector cables [here](#).

Step 15 — Motherboard



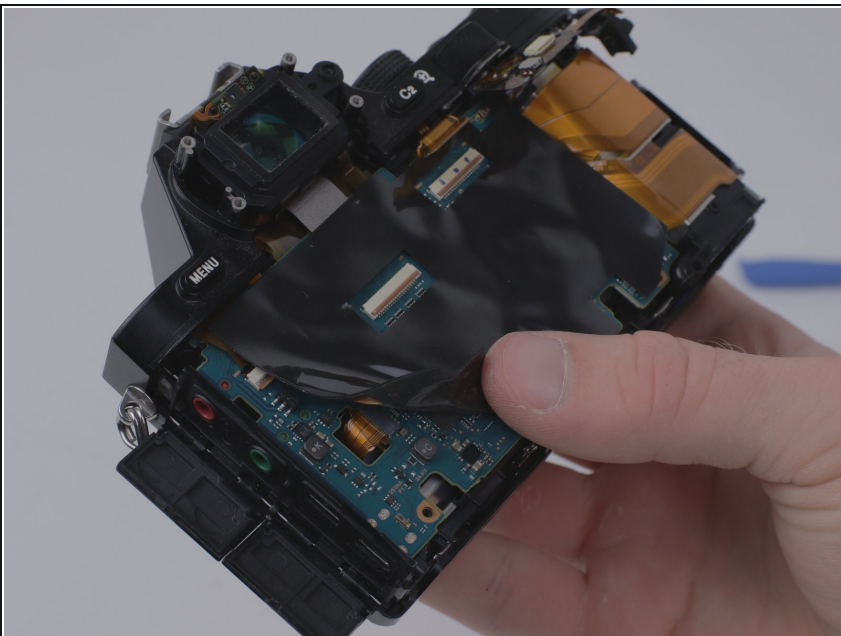
- Peel off the small adhesive tape located on the top right side of the motherboard.

Step 16



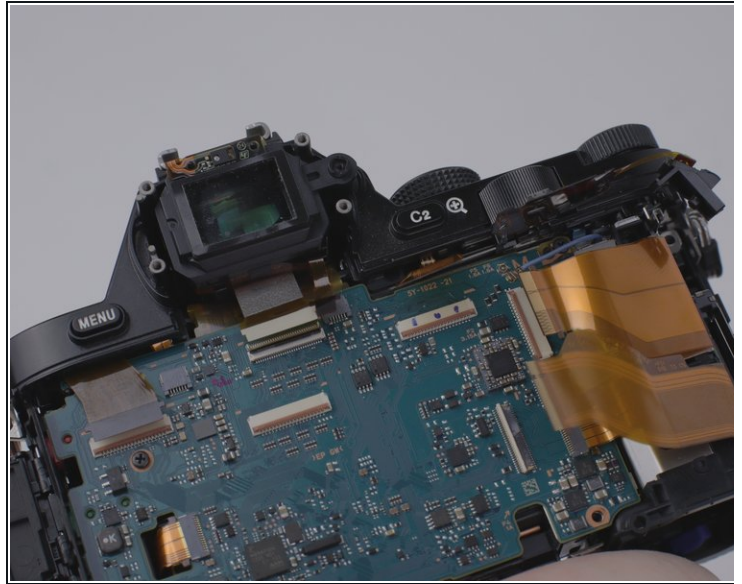
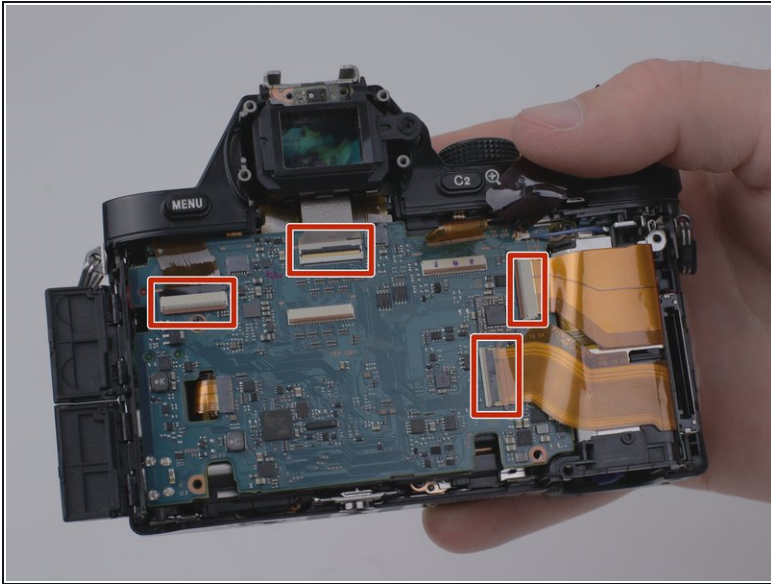
- Remove the exposed ribbon cable by using the iFixit opening tools
- ⓘ For additional guidance and tips on how to properly attach and detach connector cables, please reference *iFixit's* guide to connector cables [here](#).

Step 17



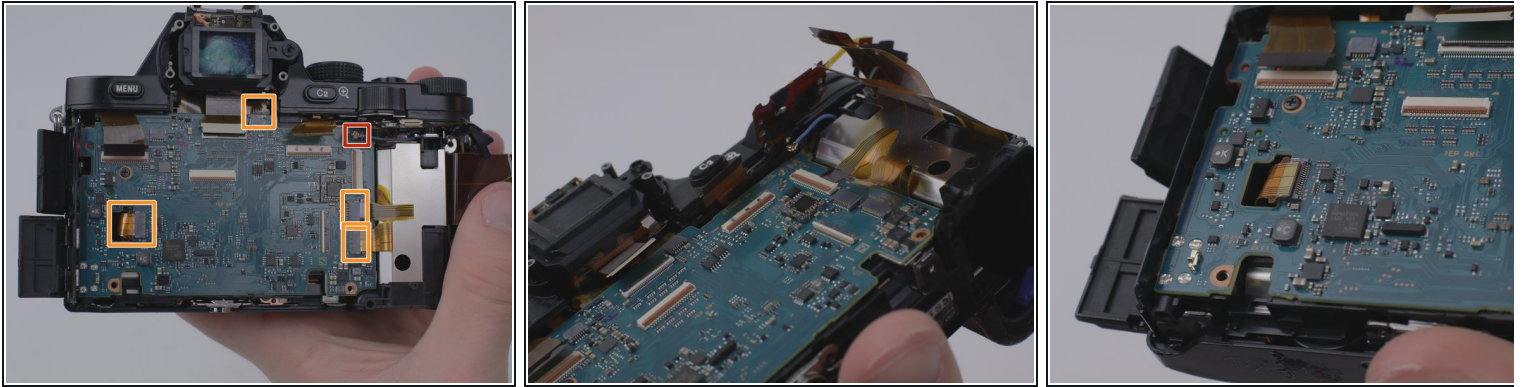
- Peel off the large black protective adhesive from the motherboard.

Step 18



- Remove the four visible ribbon cables by using the spudger.
- ⓘ Removing the ribbon cables will require lifting a lever located on the connector in order to pull out the cable.
- ⓘ For additional guidance and tips on how to properly attach and detach connector cables, please reference *iFixit's* guide to connector cables [here](#).

Step 19



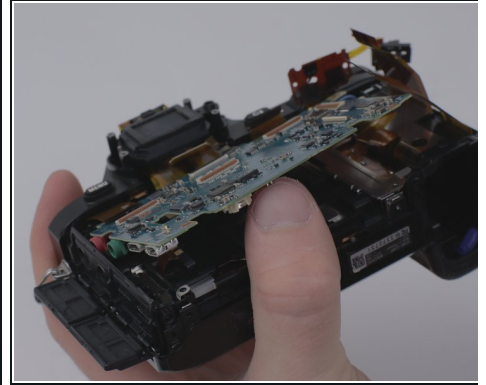
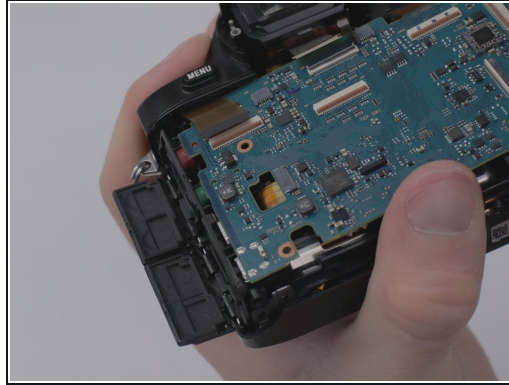
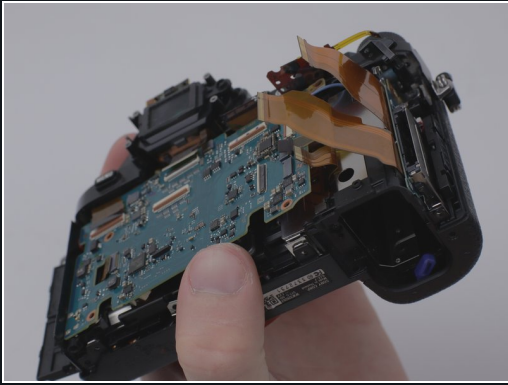
- Remove the one U.FL plug by using the spudger.
- Using the spudger, remove the four remaining ribbon cables.
- ⓘ These ribbon cables do not have the requirement to lift a lever on the connector as specified in previous steps.
- For additional guidance and tips on how to properly attach and detach connector cables, please reference *iFixit's* guide to connector cables [here](#).

Step 20



- Remove one M1.5x2mm screw with a PH00 Phillips screwdriver.
- Remove one coarse threaded 5mm screw with a PH00 Phillips screwdriver.

Step 21

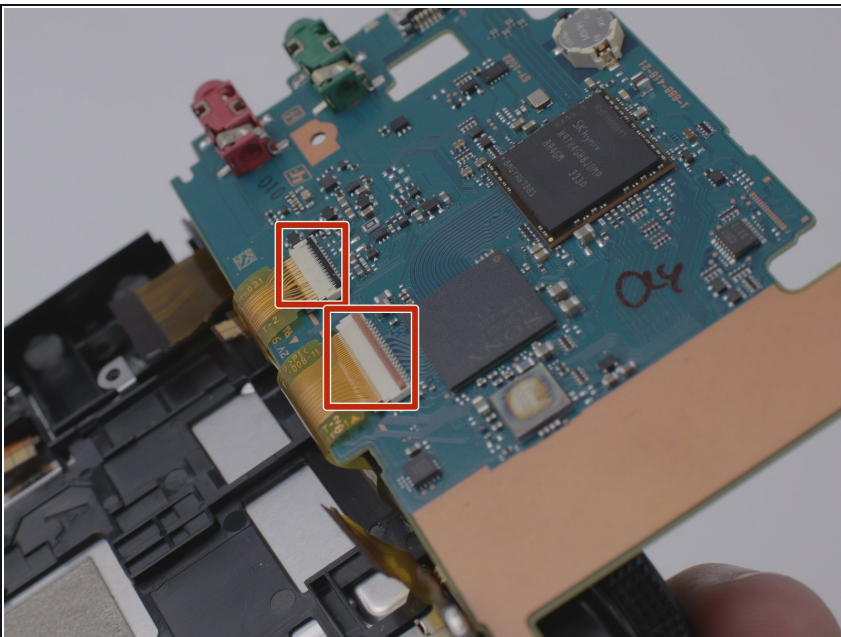


- Lift the motherboard from the camera body.

i It helps to pick up the right side of the board first, and then work sequentially down the board. Be sure to gently ease the motherboard from its clips down the remainder of the side.

! Exercise extreme caution when removing the motherboard as it can be fragile, and damage to it could mean the camera will become unrecoverable.

Step 22



- Remove the two visible ribbon cables by using the forceps.
- i** Removing the ribbon cables will require lifting a lever located on the connector in order to pull out the cable.
- i** For additional guidance and tips on how to properly attach and detach connector cables, please reference *iFixit's* guide to connector cables [here](#).

To reassemble your device, follow these instructions in reverse order.