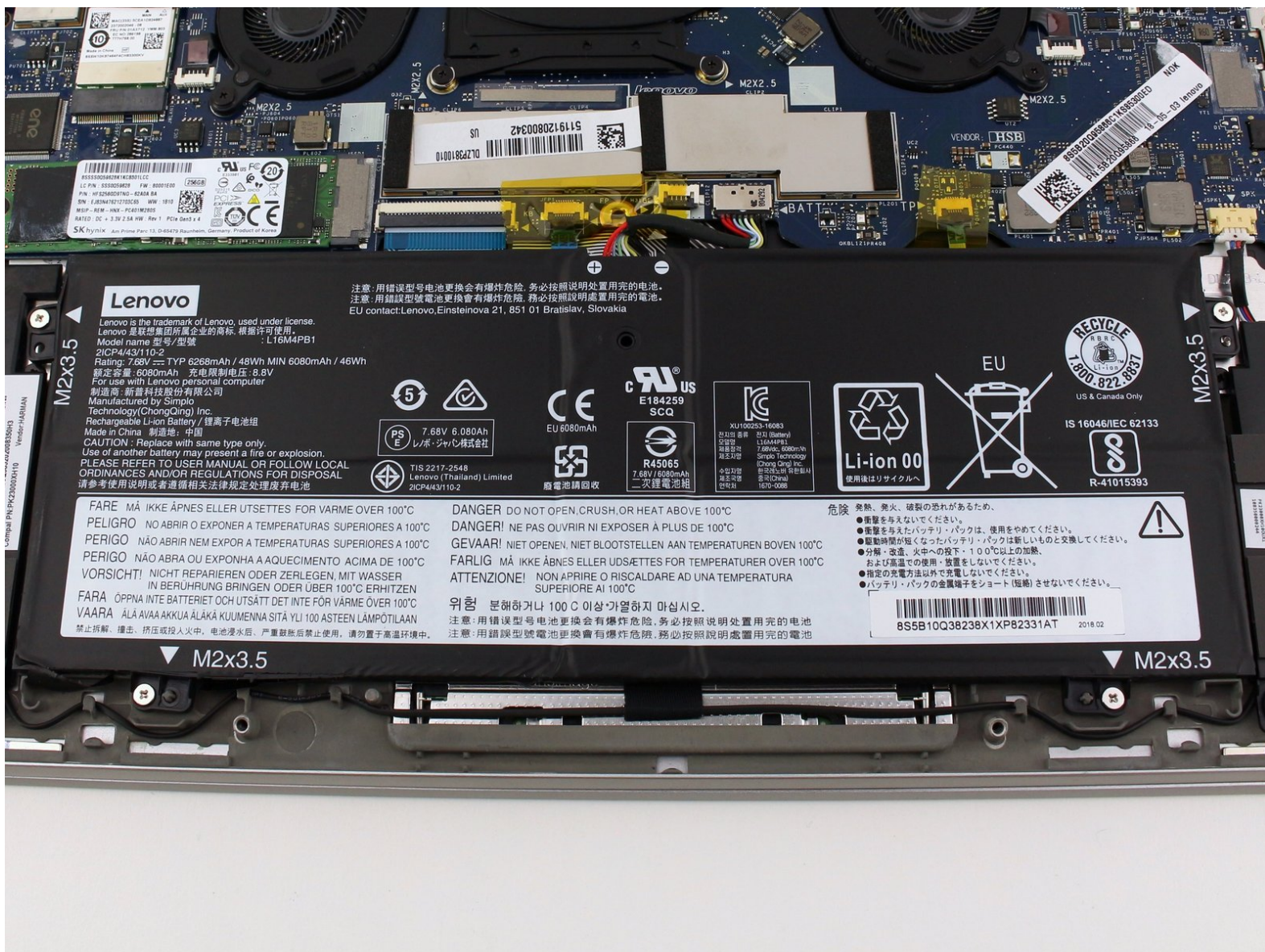




# Lenovo Yoga 730-13IKB Battery Replacement

How to replace the battery in a Lenovo Yoga 730-13IKB laptop.

Written By: Colin Reay



## INTRODUCTION

Use this replacement guide to replace the battery on the Lenovo Yoga 730 13-IKB ( *model numbers starting with “81CT”*).

Failure to charge and poor battery life may indicate a faulty battery. Make sure to review the [troubleshooting guide](#) before replacing the battery itself. A faulty power adapter or outdated drivers can cause battery issues and are easy, affordable fixes.

Keep any debris or liquids away from the computer while replacing the battery because the internal components of the laptop will be exposed. Follow the [necessary steps](#) to handle and dispose of the battery if it appears swollen.



### TOOLS:

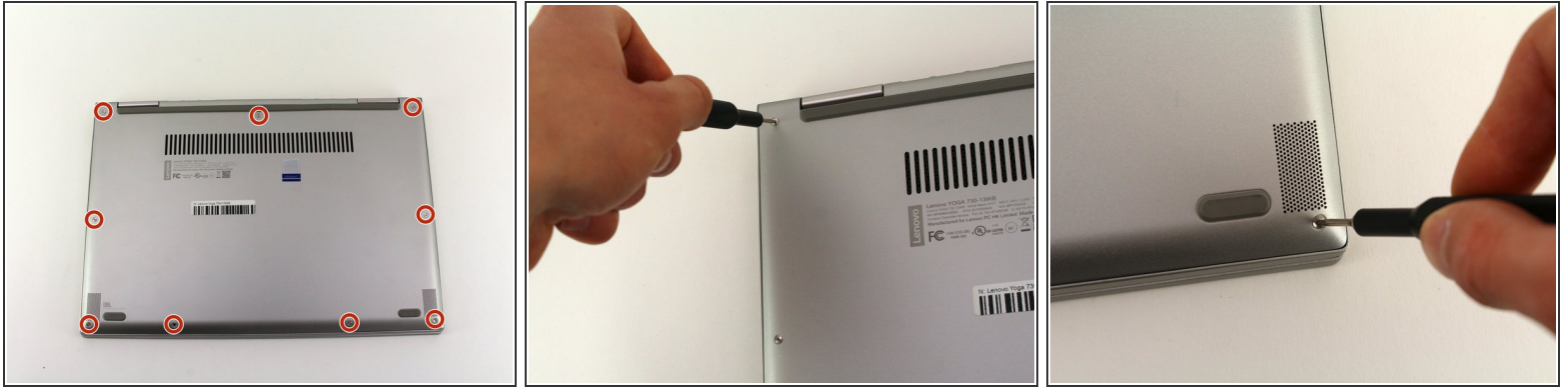
- [Phillips #00 Screwdriver](#) (1)
- [iFixit Opening Tool](#) (1)
- [T5 Torx Screwdriver](#) (1)
- [Phillips #0 Screwdriver](#) (1)



### PARTS:

- [Lenovo Yoga 720 and 730 13" Battery](#) (1)

## Step 1 — Back Case



**i** Power off the laptop and place it facedown on a non-scratching surface.

- Remove the nine T5 screws fastening the back case.

## Step 2



- Slide a plastic opening tool underneath the back case near the screen hinges. Gently pry up on either side.
- Slide the opening tool underneath the back case next to the middle screw hole at either side of the case. Gently pry up.
- i** You may hear popping sounds as the tabs securing the case release. This is normal. If the case does not move, try prying at a different angle/position.



## Step 3



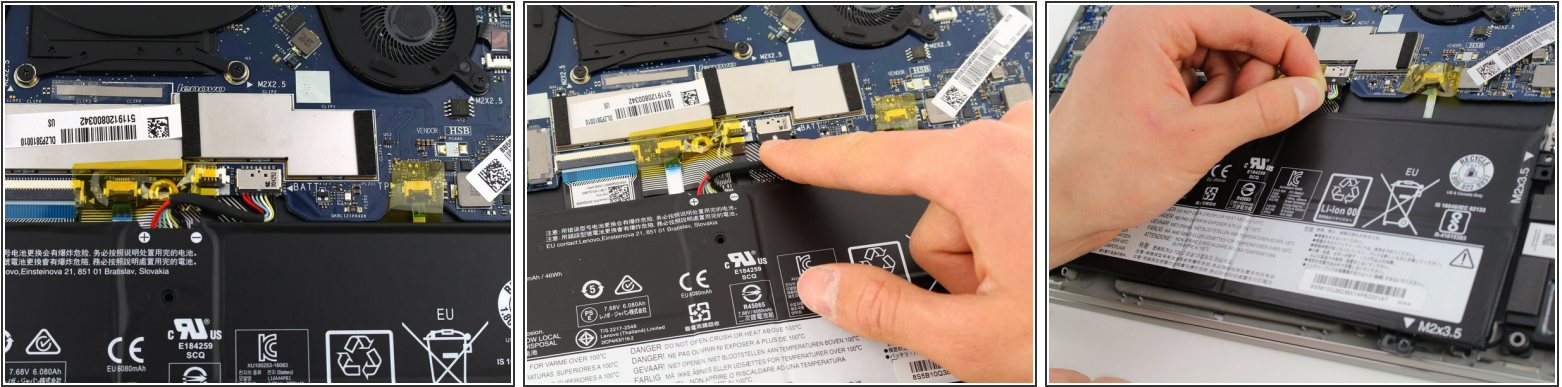
- Remove the back case by pulling up near the screen hinges and lifting diagonally away from the laptop.
- ❗ Go slowly to avoid breaking any connecting tabs.

## Step 4 — Battery



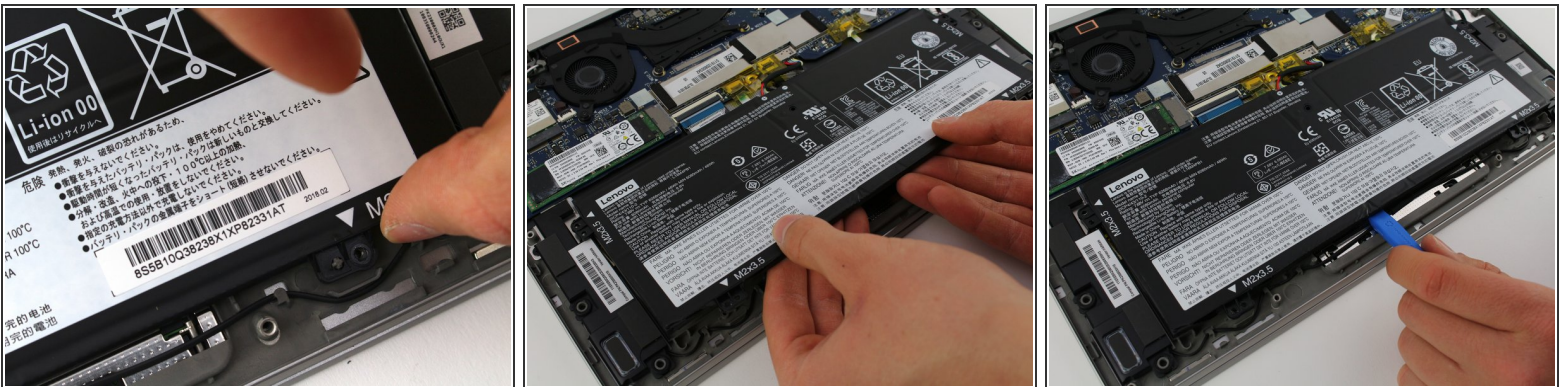
- Remove the four 3.5mm Phillips #0 screws securing the battery.

## Step 5



- Disconnect the battery cable by gently pulling it straight out of the connector.
- ☑ The battery connector does not lock and requires light pressure to insert and remove. To reinstall the battery cable, hold onto the black housing and push it into the motherboard connector.

## Step 6



- Remove the battery by pulling up near the white label and lifting diagonally away from the laptop.
- ❗ Consider using a plastic opening tool to gently pry up near the white label if the battery seems stuck.
- ☑ To reinstall the battery, carefully align its mounting holes with the plastic pins on the laptop frame.

To reassemble your device, follow these instructions in reverse order.