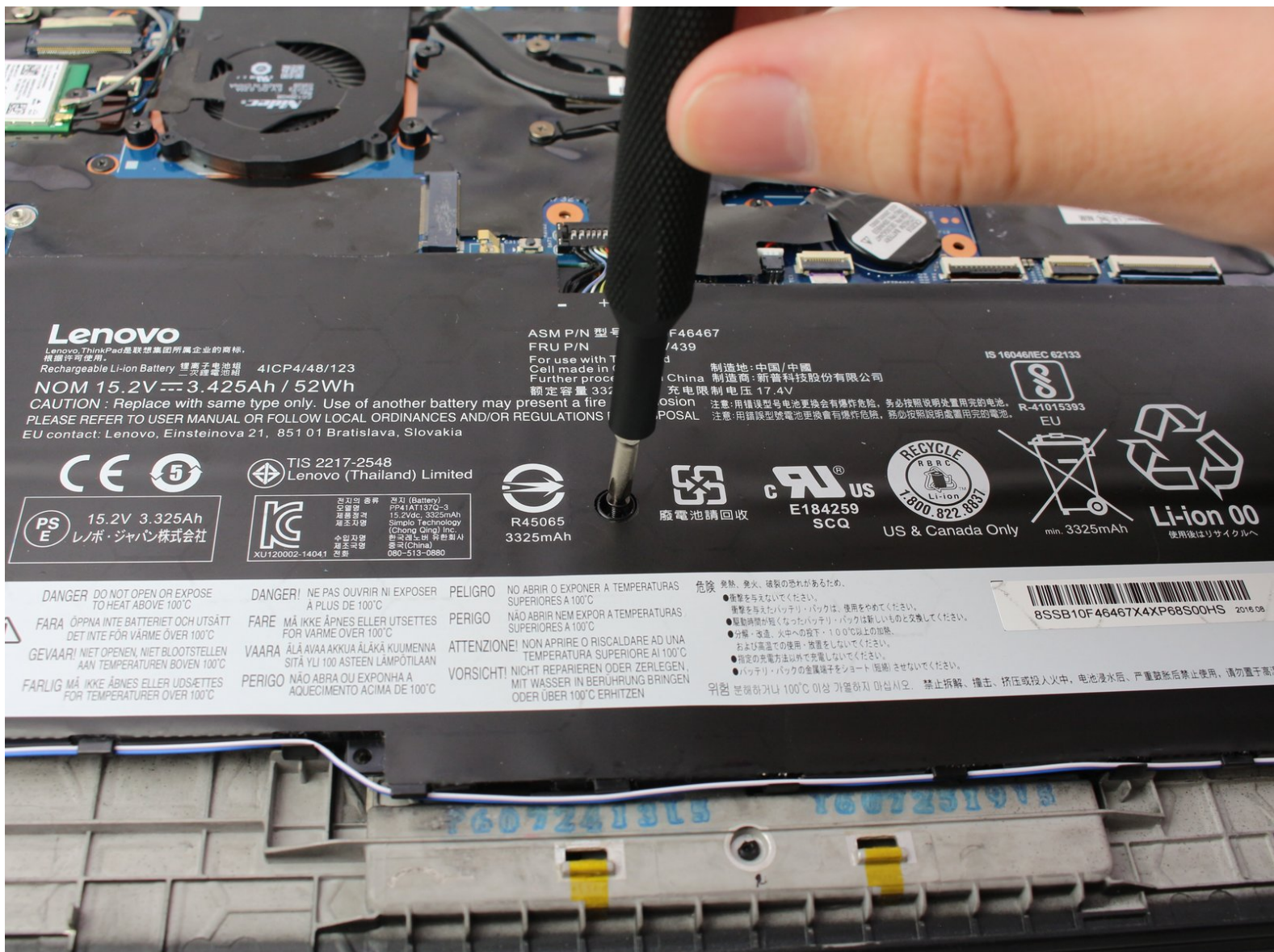




Lenovo Thinkpad X1 Carbon 4th Gen Lithium Battery Replacement

If your Lenovo ThinkPad X1 Carbon 4th Gen...

Written By: Alexander Davis



INTRODUCTION

If your Lenovo ThinkPad X1 Carbon 4th Gen (*20FB002LUS*) is not holding a charge or not charging at all, the battery may need to be replaced. Follow this guide to replace the main lithium-ion battery in your laptop.

The main lithium-ion battery in your laptop is responsible for powering your device when it is not plugged in. Over time, the battery may degrade and drain faster during use—this problem can be solved by replacing the battery.

This guide covers how to replace the primary battery on your laptop. If your device is not powering on at all, it's recommended that you check the smaller coin cell battery first, since replacing the small coin cell is done more easily and costs less than the larger lithium-ion battery. A guide for replacing the coin cell battery can be found [here](#).

Before starting this guide, make sure to power down the device fully and unplug any exterior sources of power from the laptop.



TOOLS:

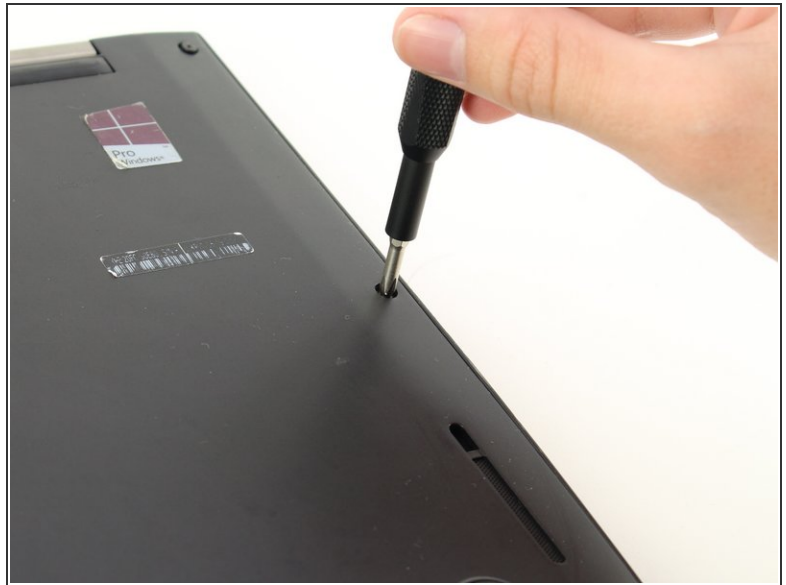
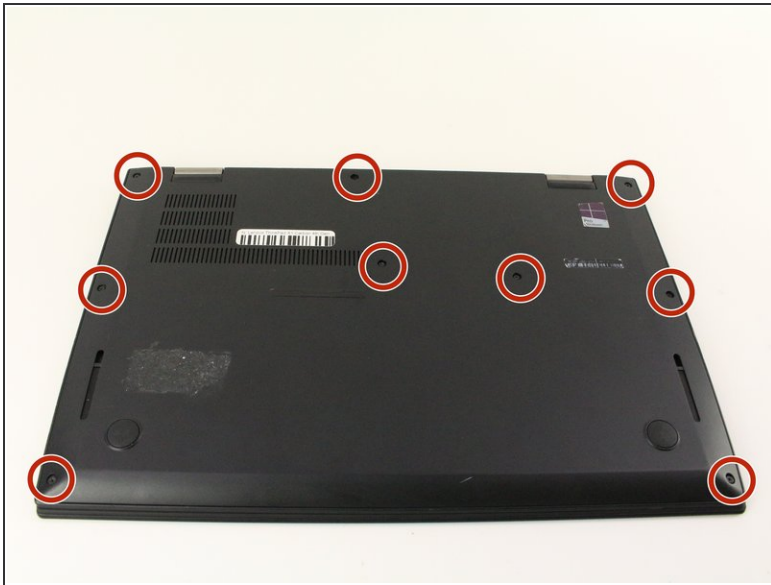
- [Phillips #1 Screwdriver](#) (1)
- [iFixit Opening Tool](#) (1)



PARTS:

- [Lenovo 01AV409 56Wh Battery](#) (1)
- [Lenovo 00HW028 52Wh Battery](#) (1)

Step 1 — Bottom Panel



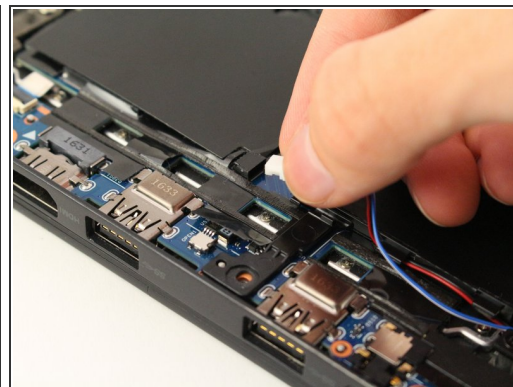
- Unscrew the nine captive screws on the bottom cover of the laptop using a Phillips #1 screwdriver.
- ⓘ The screws do not fully come out of the back cover, so there is no need for screw management.
- There are a few small clips around the edge that you may need to pry at to free them. An opening pick may be helpful for this process.

Step 2



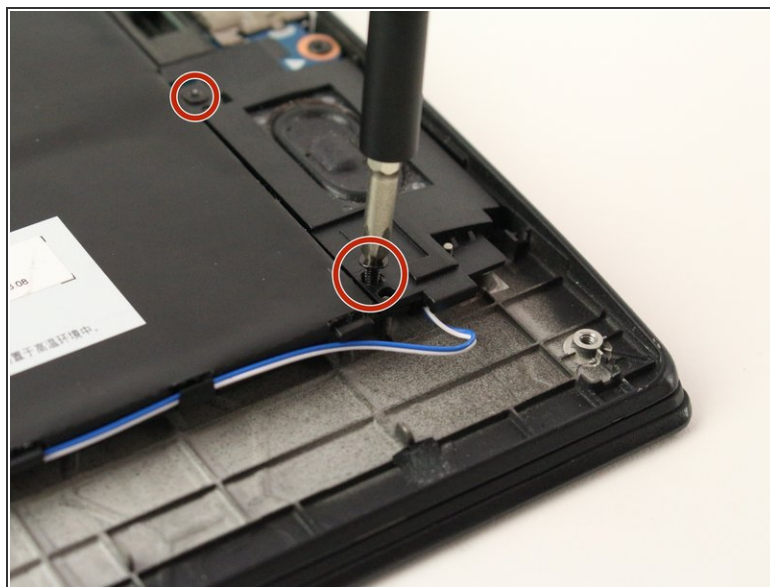
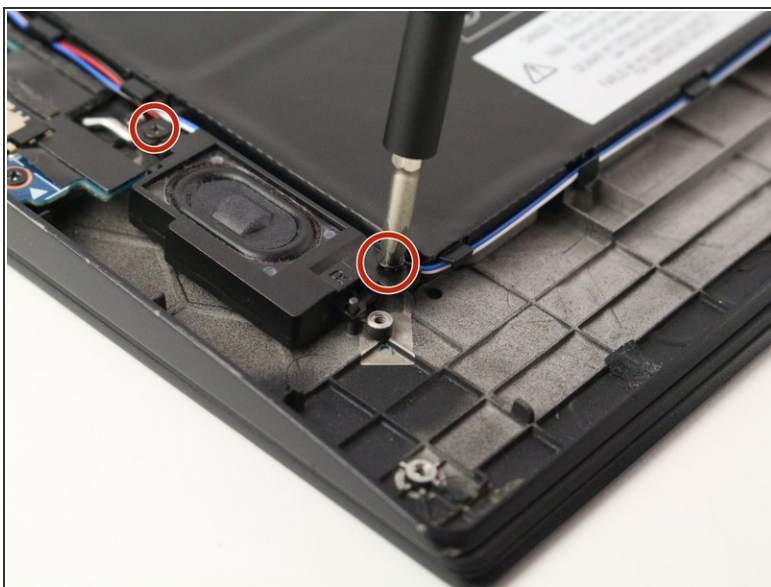
- Lift the back cover up and off of the computer.

Step 3 — Speakers



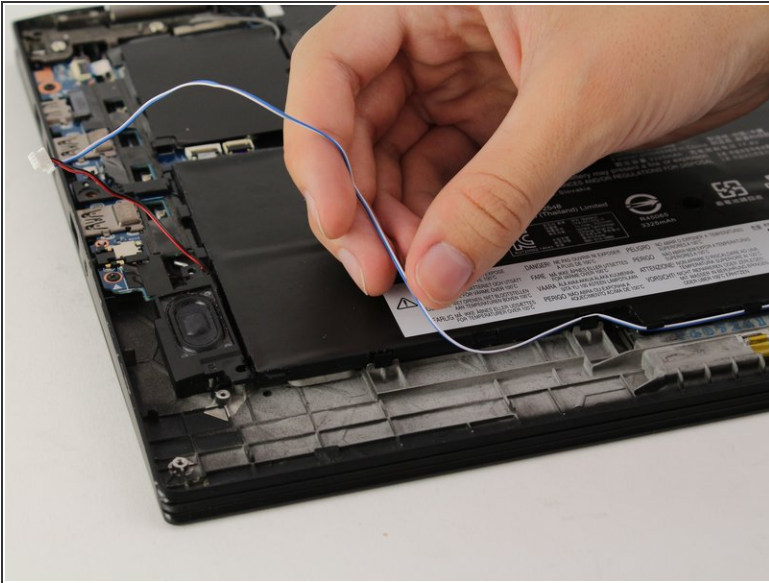
- Carefully unplug the speaker connector by pulling it towards you.

Step 4



- Remove the two 5 mm screws on each speaker with a Phillips #1 screwdriver.

Step 5



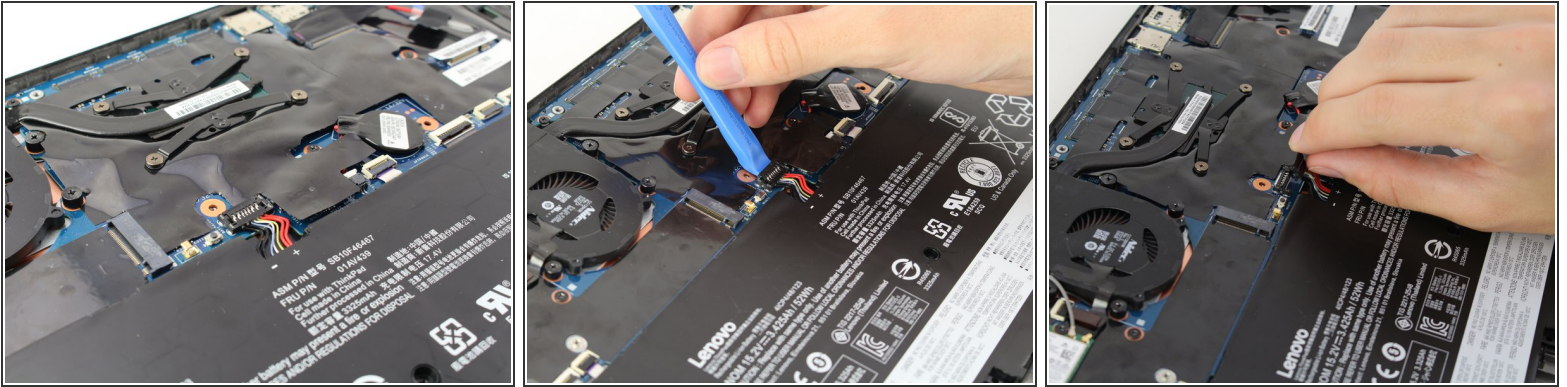
- Unweave the blue and white wires from underneath the plastic tabs connected to the battery.

Step 6



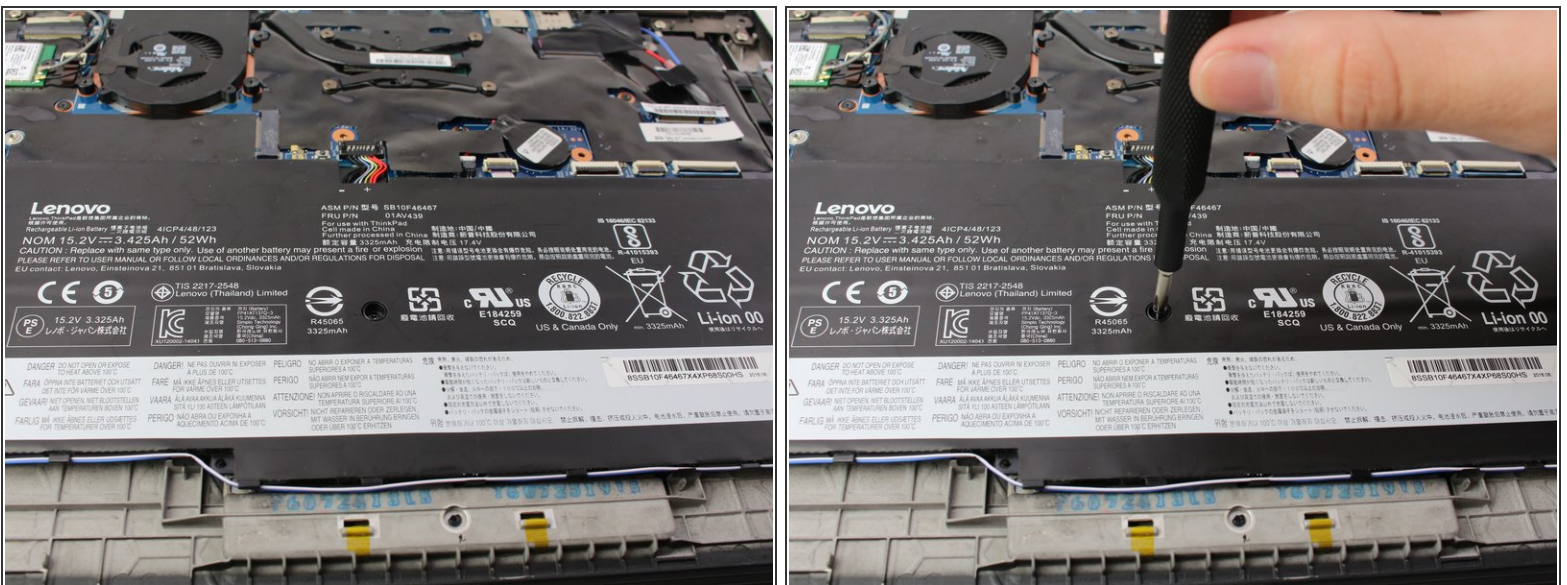
- Lift each speaker up and out from the computer.

Step 7 — Lithium Battery



- Carefully lift the far end of the battery connector with an opening tool facing towards you.
- Remove the connector by pushing it forward and lifting.

Step 8



- Remove the central 5 mm screw with a Phillips #1 screwdriver.

Step 9



- Lift the battery up and out of the computer.

To reassemble your device, follow these instructions in reverse order.