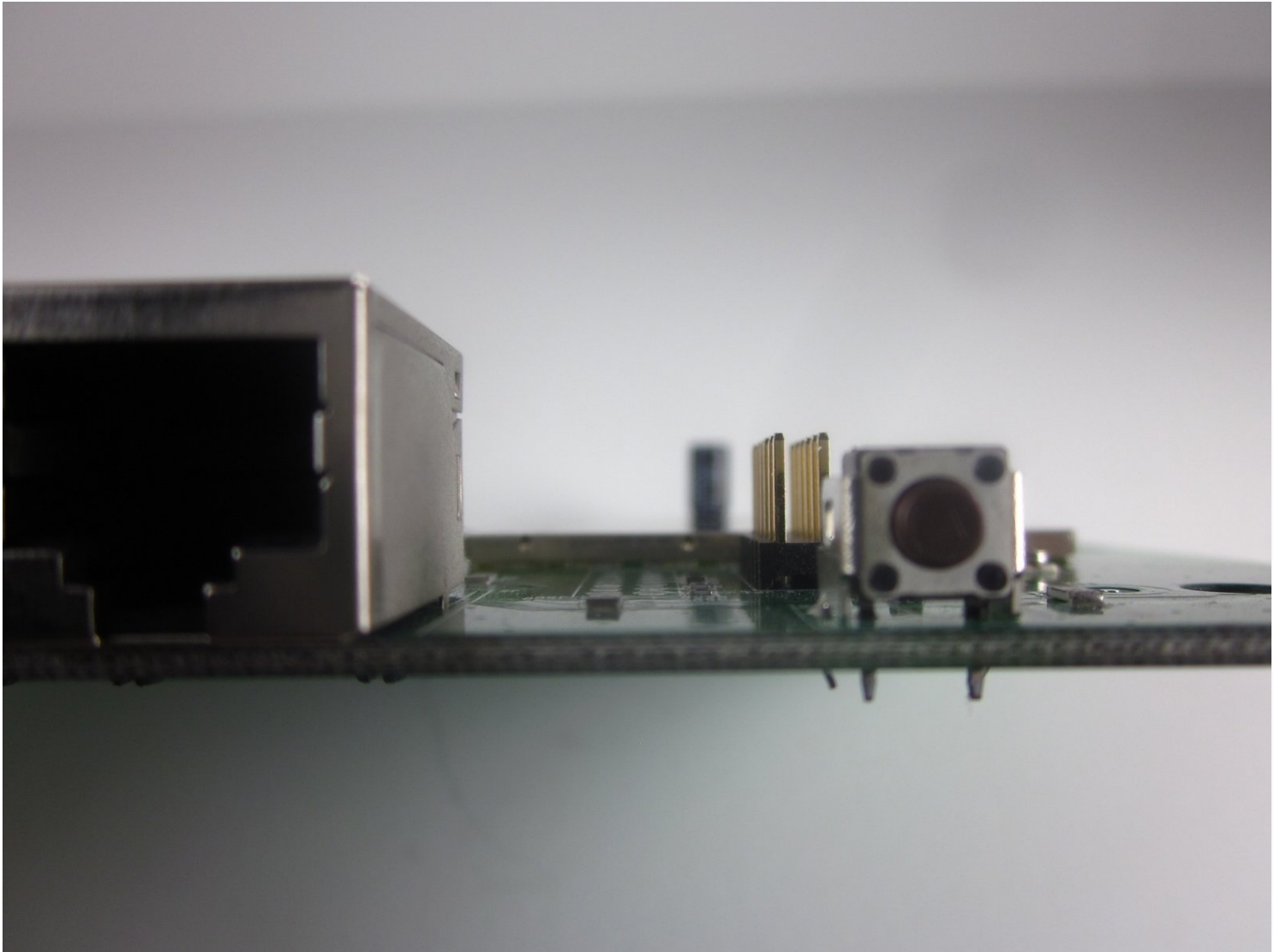




# NETGEAR WGT624 v3 Reset Button Replacement

Removing the reset button will allow you to...

Written By: Jonathon Sather



# INTRODUCTION

Removing the reset button will allow you to replace it if it is not functioning properly.

---

## TOOLS:

[Desoldering Braid](#) (1)  
[Phillips #0 Screwdriver](#) (1)  
[iFixit Opening Tool](#) (1)  
[Lead-Free Solder](#) (1)  
[Soldering Workstation](#) (1)  
[TR8 Torx Security Screwdriver](#) (1)

---

## Step 1 — Lower Case



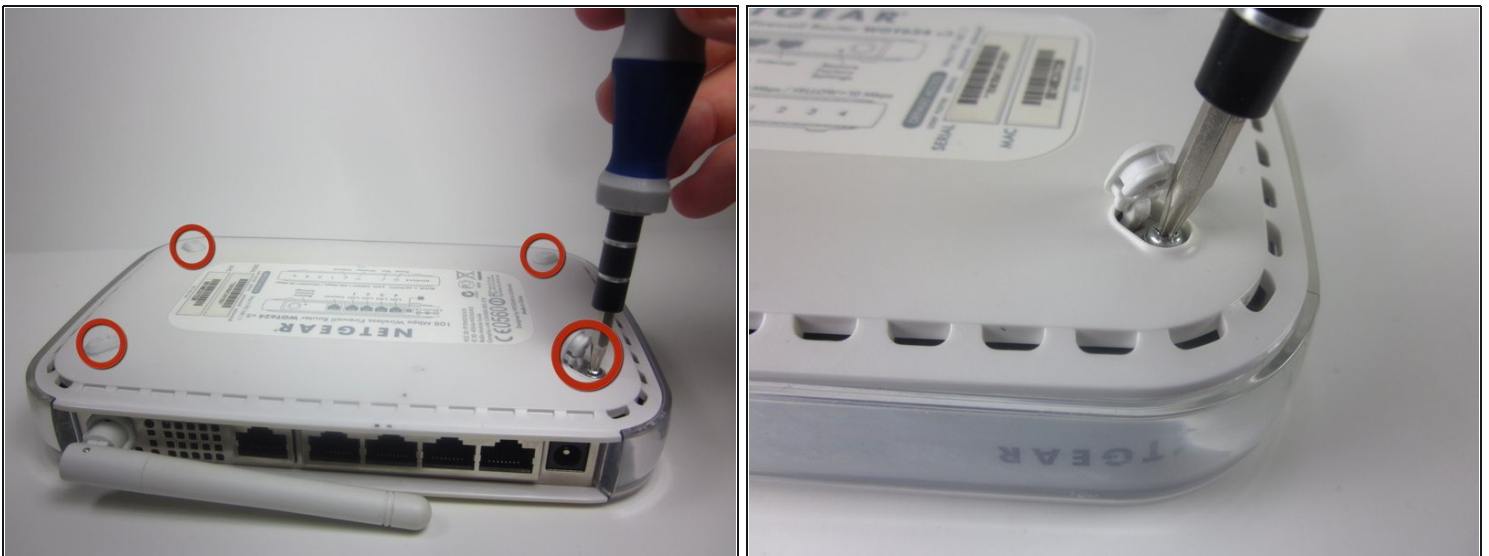
- Turn the device so that the bottom is facing up.

## Step 2



- Use the plastic opening tool to carefully lift the rubber stops in each corner.
- ⓘ Do not completely remove the rubber stops, because they are difficult to replace.

## Step 3



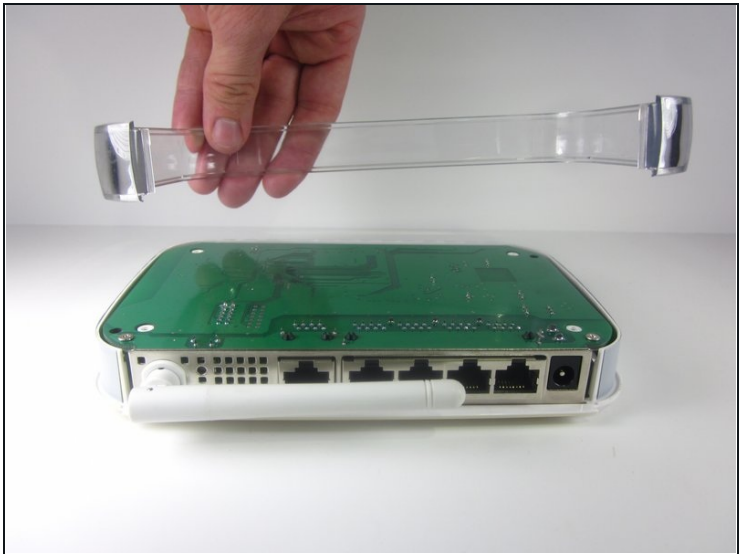
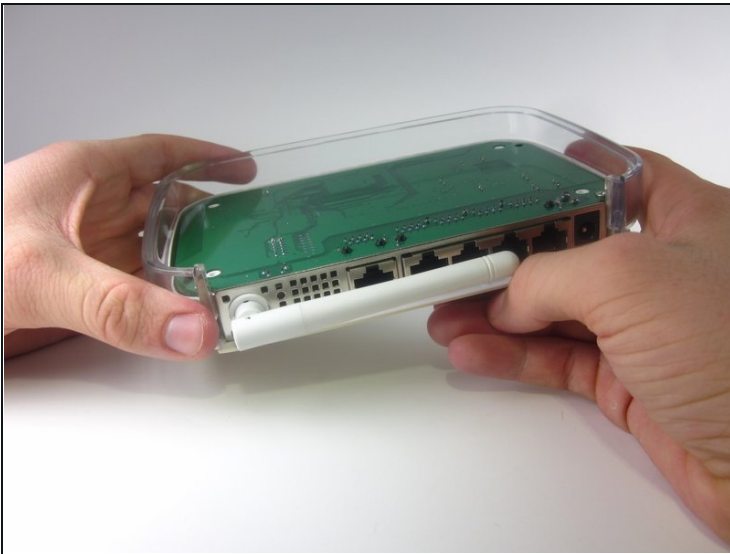
- Unscrew the 4 11.8 mm T-8 Torx screws from each corner of the device.

## Step 4



- Lift the lower case straight up from the rest of the router.

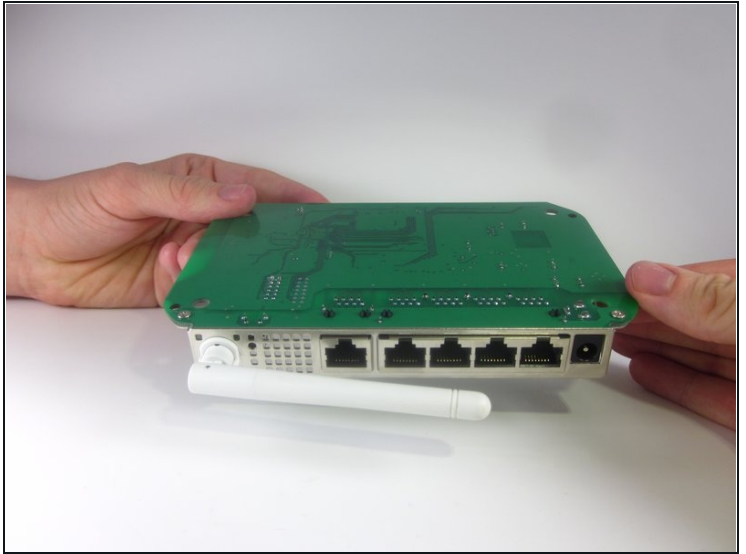
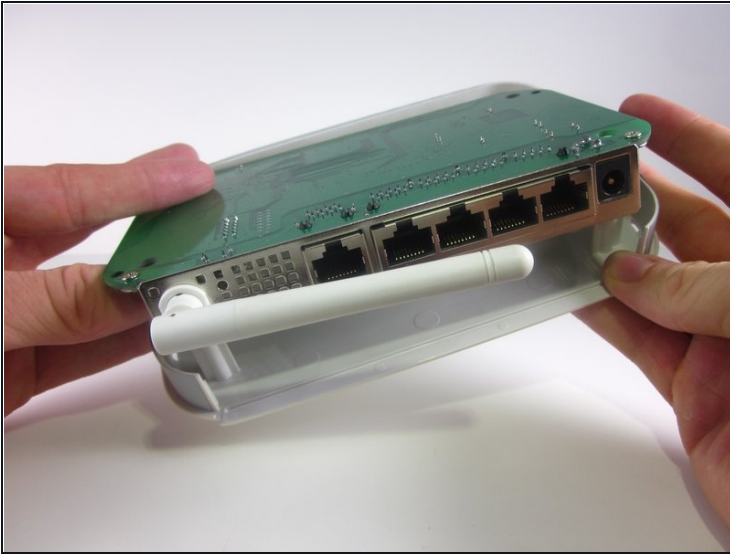
## Step 5 — Motherboard



- Remove the clear plastic casing by lifting it straight up from the router.

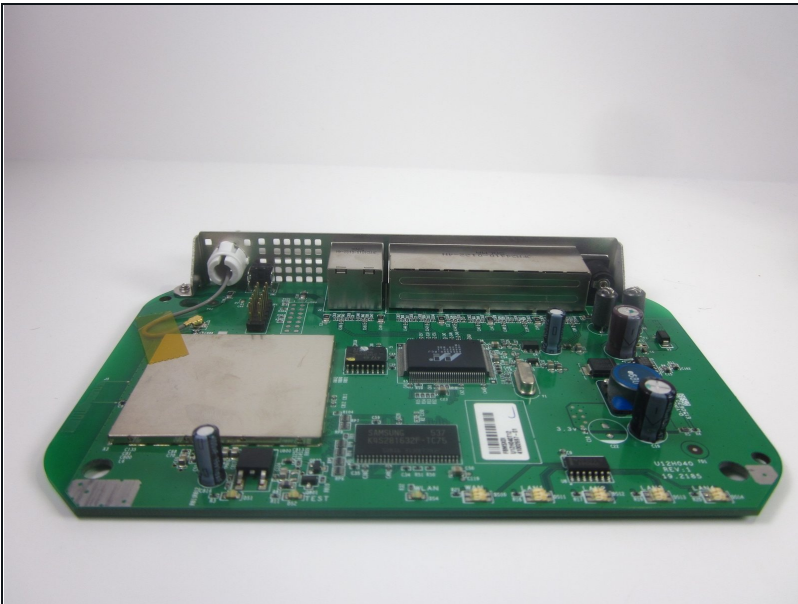


## Step 6



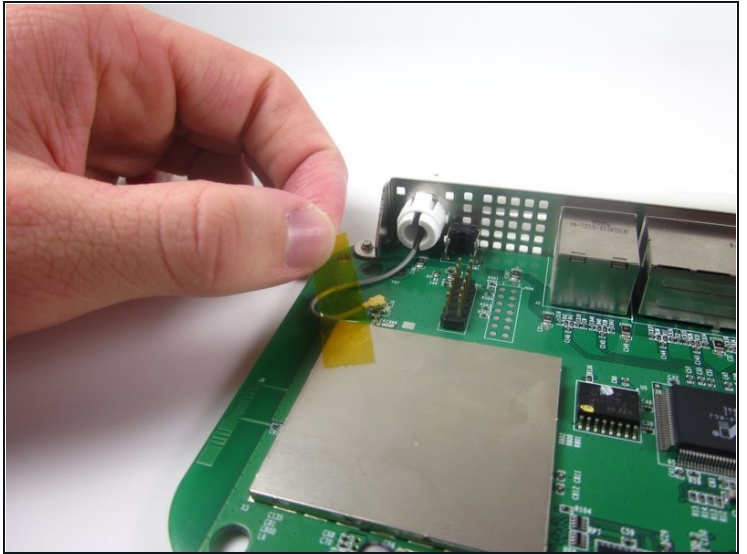
- Separate the motherboard from the top shell by lifting it straight up from the router.

## Step 7 — Antenna



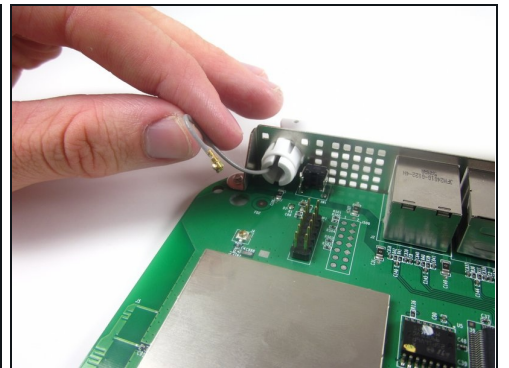
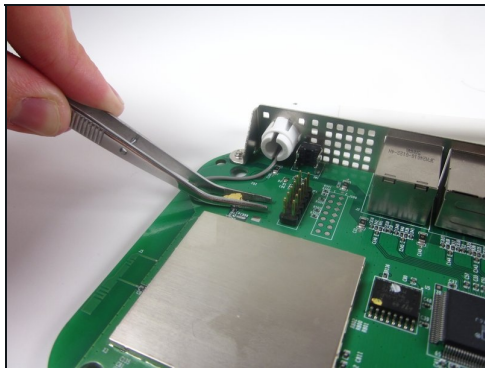
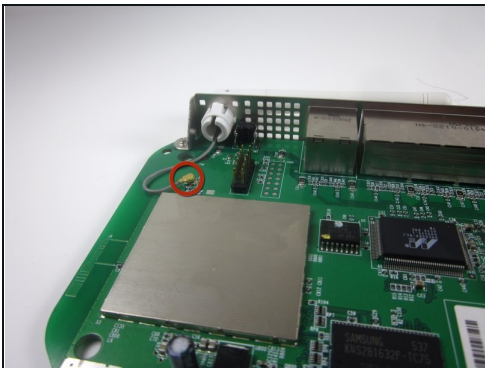
- ① Turn the motherboard, so that the top is facing upwards.
- Place the motherboard on a clean flat surface.

## Step 8



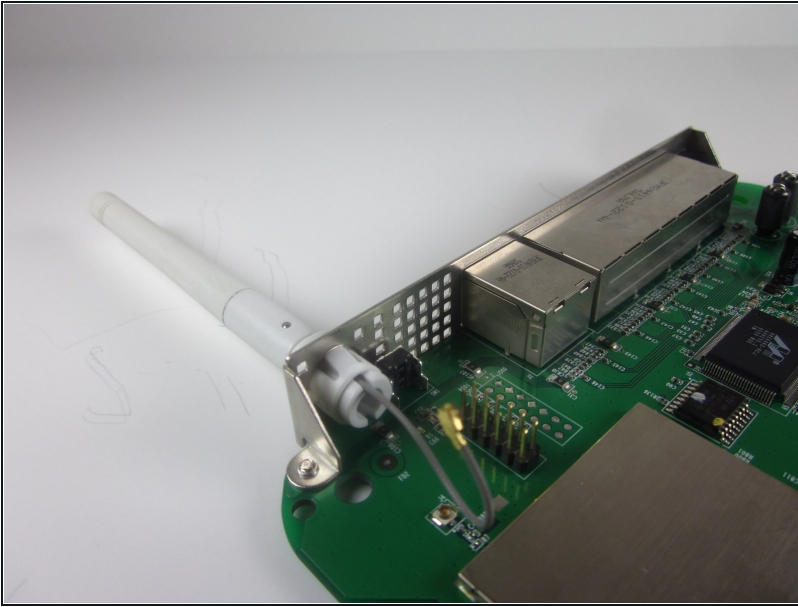
- Remove the yellow tape that holds the wire.
- ① Make sure that you set the tape aside on a clean surface, so that it can be reused.

## Step 9



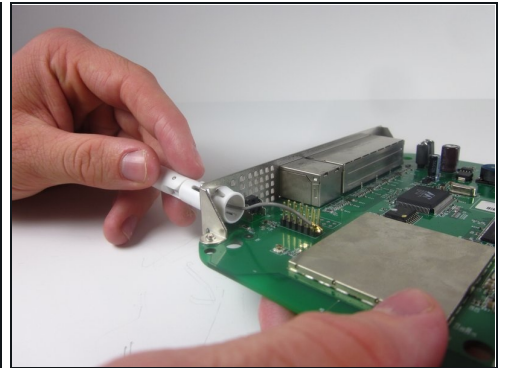
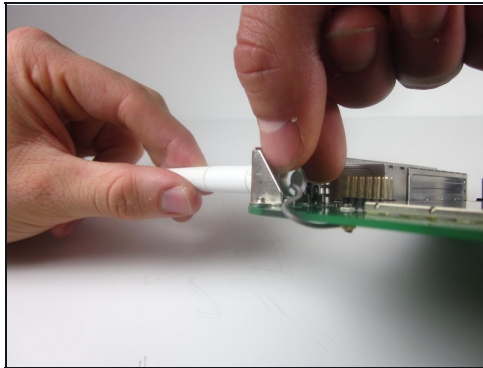
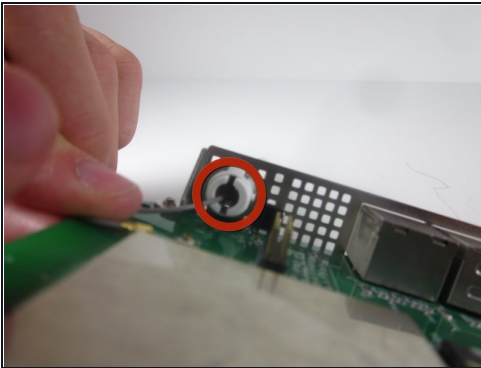
- Use [tweezers](#) to gently pull the metal bracket that connects the antenna to the motherboard.
- ① The wire should now be completely separate from the motherboard.

## Step 10



- Extend the antenna away from the device, so that it becomes straight.

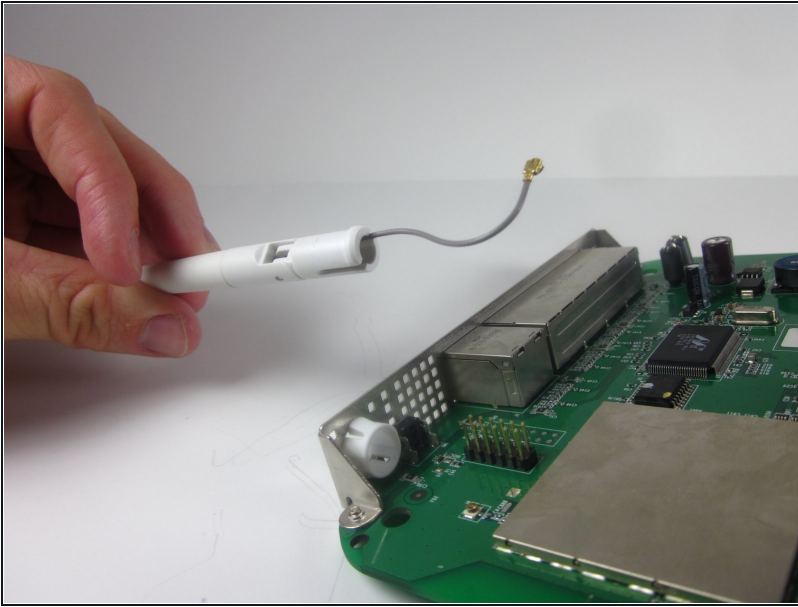
## Step 11



- Find the clips that hold the antenna onto the router.
- Use one hand to push the clips in, while using your other hand to pull out the antenna. You may need to gently twist the antenna so it can separate from the hole.
- The antenna may take considerable force to remove.

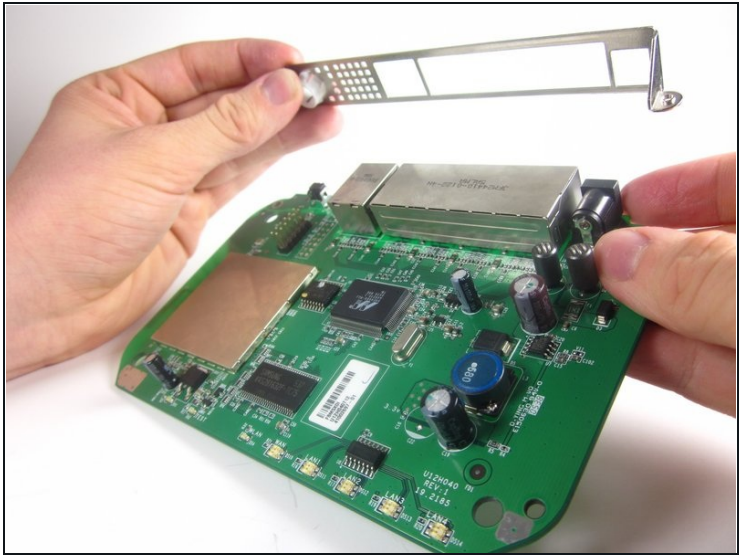
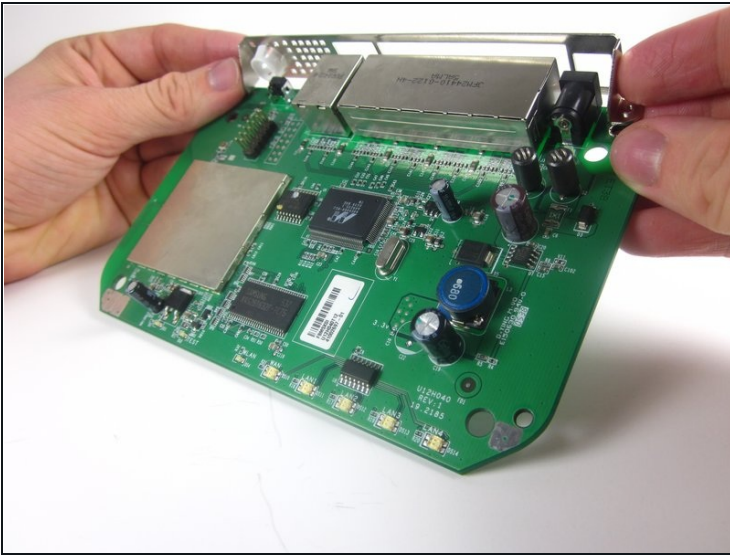


## Step 12



- Completely separate the antenna and wire from the rest of the device.

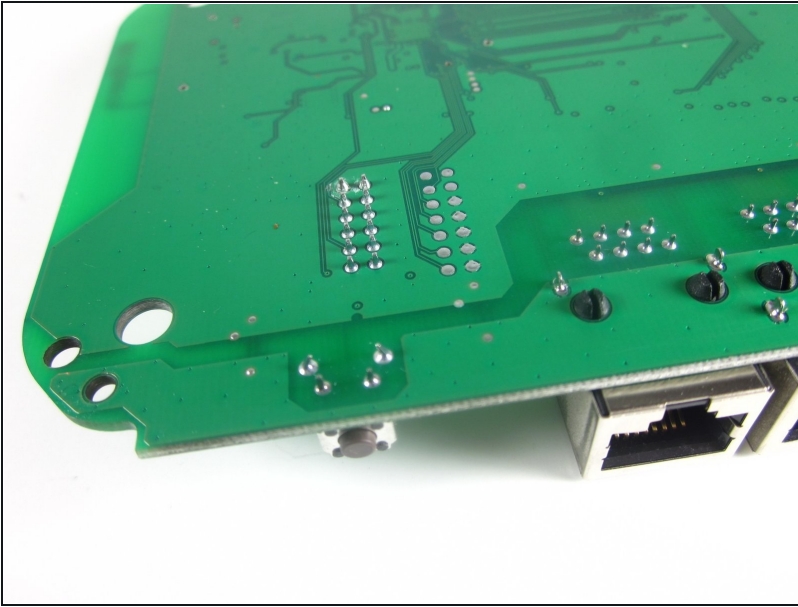
## Step 13 — Reset Button



- Remove the metal frame.

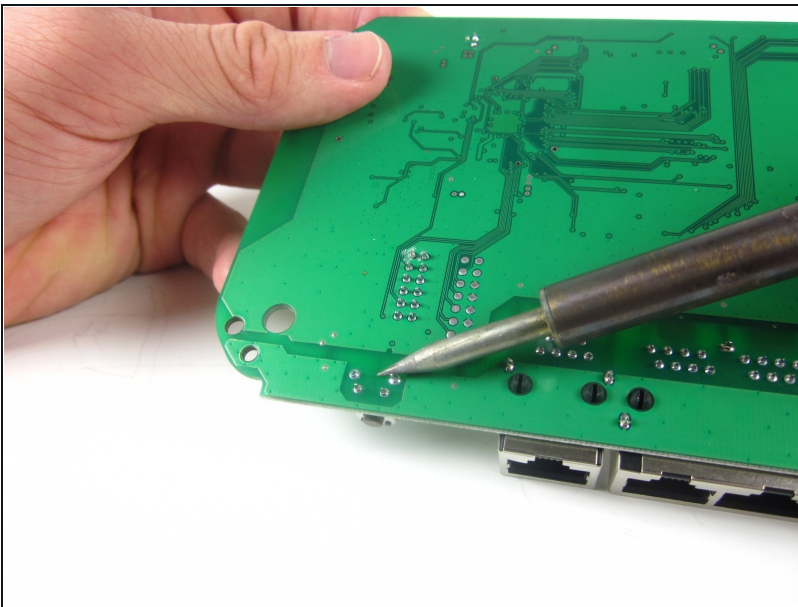


## Step 14



- Turn over the motherboard.

## Step 15



- ① Do not refer to the pictures in this step for correct soldering and de-soldering techniques. They are solely for illustration purposes.
- Desolder the four connections between the reset button and the motherboard
- ① For proper soldering and desoldering techniques, refer [here](#).
- Pull the reset button from the other side of the mother board once the solder is liquid.

To reassemble your device, follow these instructions in reverse order.

