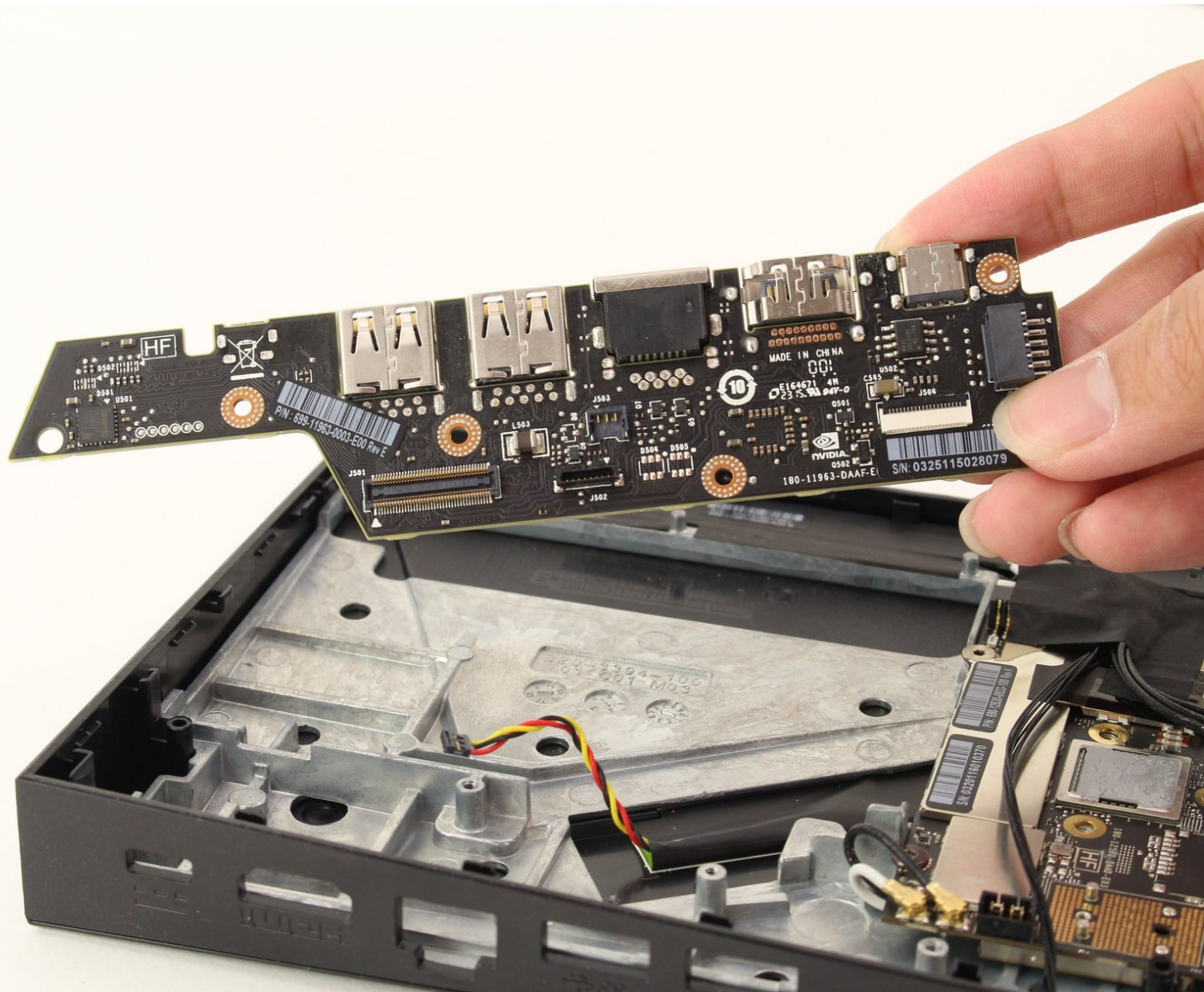




# Nvidia Shield Pro Android TV I/O Board Replacement

This guide will show you how to replace the I/O board of the Nvidia Shield Pro Android TV located on the inside of the Nvidia Shield Pro.

Written By: Jimmy Chen



---

## INTRODUCTION

If your charging port, USB ports, ethernet port, or HDMI port on your Nvidia Shield Pro Android TV are not working properly, use this guide to help remove/replace your I/O board on your Nvidia Shield Pro. The only tools required for this procedure are the T6 Torx screwdriver and the plastic opening tool. Some steps may be difficult due to the cluster of screws and wires to be located, but do not fret, this guide will help you locate all the parts you need to remove.



### TOOLS:

- [T6 Torx Screwdriver](#) (1)
  - [iFixit Opening Tools](#) (1)
-

## Step 1 — Bottom Cover



- Flip to the back side of your Nvidia Shield Pro Android TV.
- To open the bottom cover of the Nvidia Shield, start from the corner and slide your plastic opening tool across the gap.
- If using a plastic opening tool to open the bottom cover is difficult, try using a metal spudger.

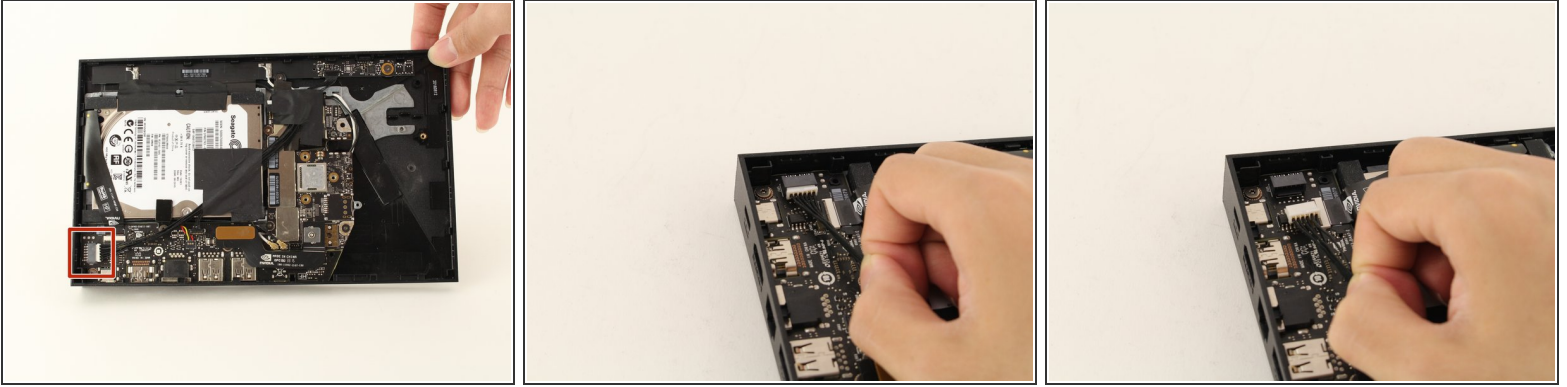
## Step 2 — Hard Drive



- Remove the two pieces of adhesives found at the top and the bottom side of the hard drive.
- ☒ Put the two adhesives aside. Make sure to keep them flat so that you can put them back on after.

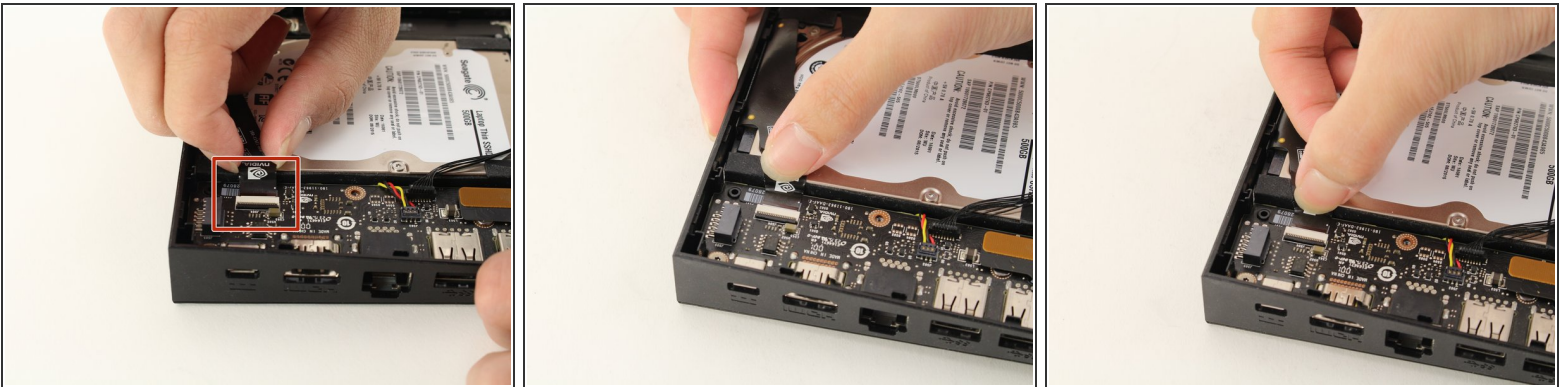


## Step 3



- Detach the pack of wires by pulling it away from the socket.

## Step 4



- Next to the empty socket where the black wires were attached to the I/O board (refer back to Step 2), detach the plastic strap from the I/O board by pushing the strap away from the socket using your finger.

## Step 5



- Remove the screw on the metal piece using a T6 Torx screwdriver and put away the metal piece after removing the screw.

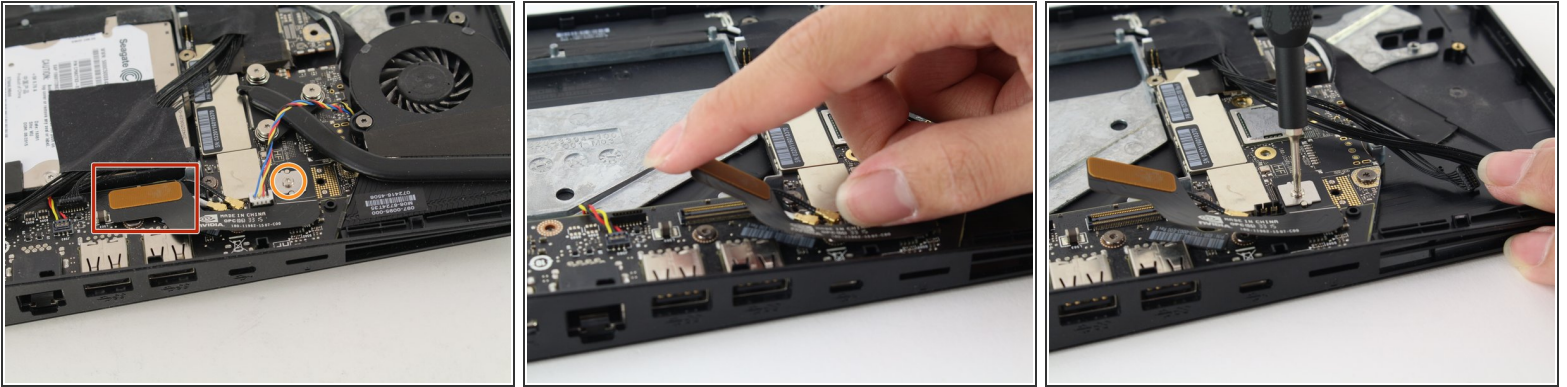
## Step 6



- Gently pull the hard drive out of the device.

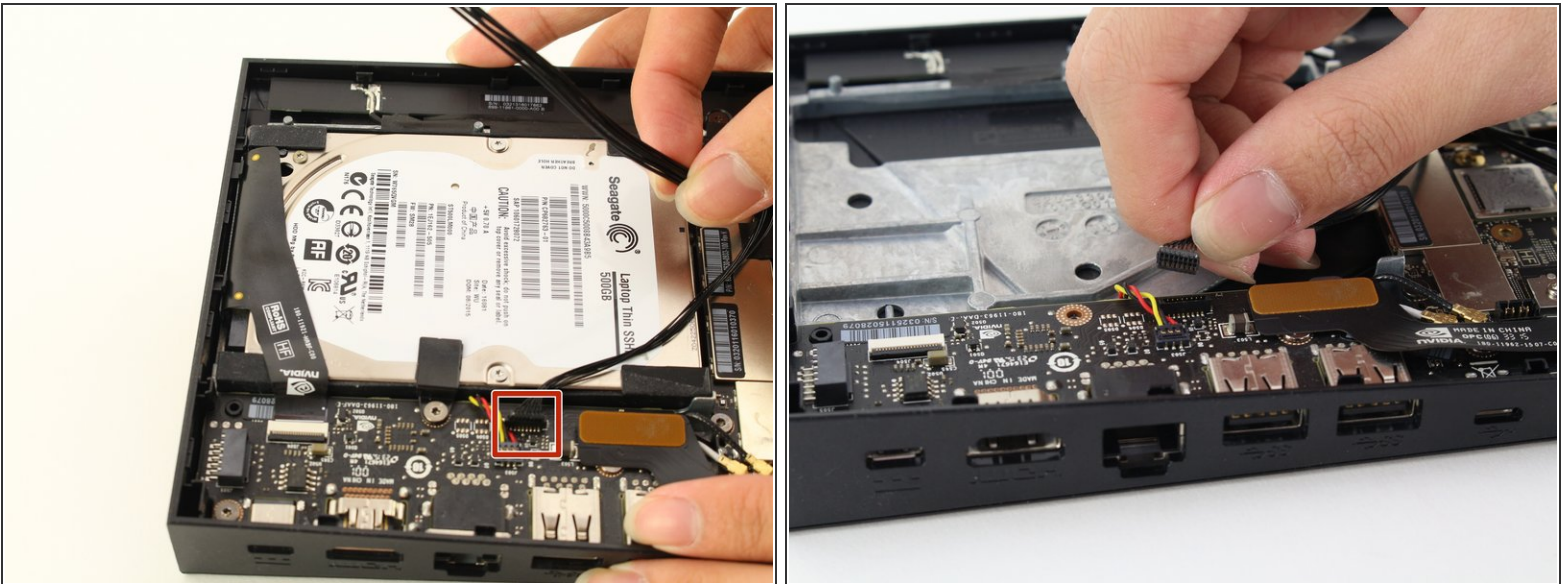


## Step 7 — I/O Board



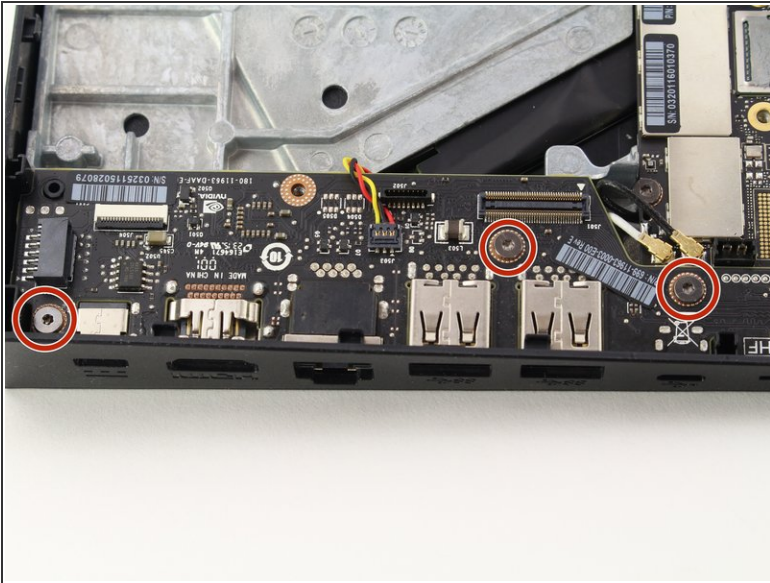
- Detach the brown side of the connector from the I/O board by pulling it upward.
- Remove the screw from the silver plate using a T6 Torx screwdriver.
- Put the cable aside after removing it.

## Step 8



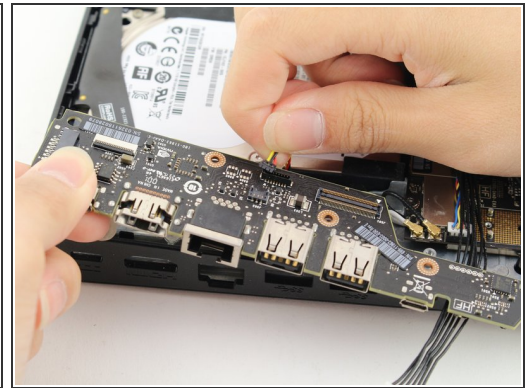
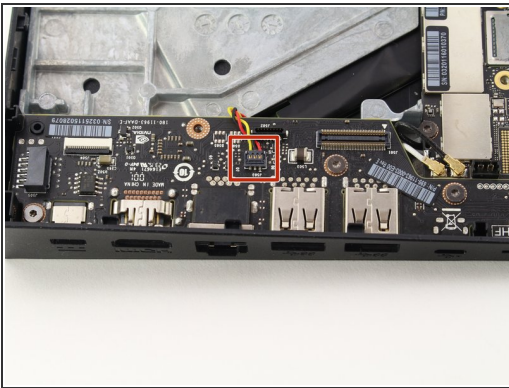
- Detach the small bundle of black wires from the I/O board by gently pulling upward.
- ⚠ Be very gentle because the wires are very fragile.

## Step 9



- Remove the three T6 Torx screws from the I/O board.

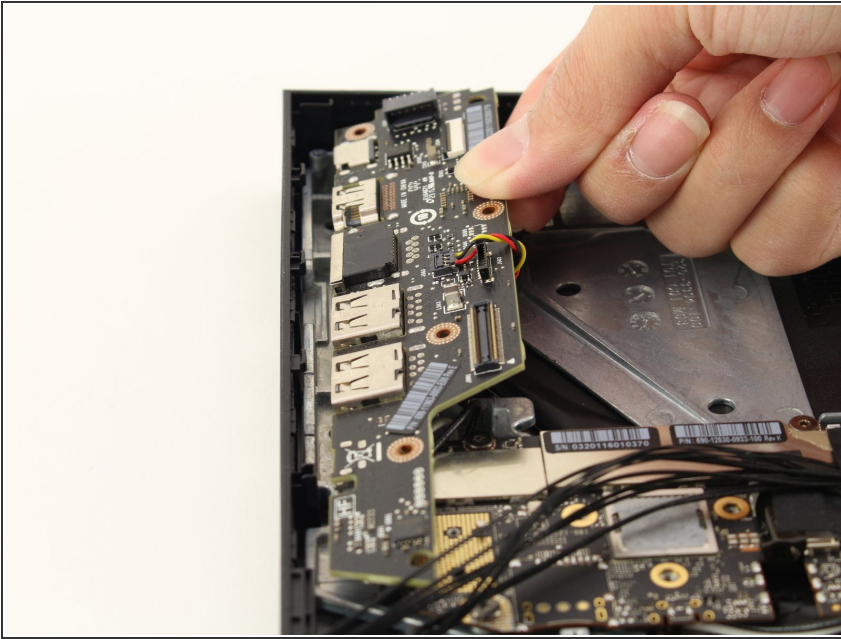
## Step 10



- Detach the multi-colored (red/yellow/black) wire from the I/O board by pulling it away from the socket.



## Step 11



- Gently remove the I/O board by sliding it away from the exterior input/output sockets on your Nvidia Shield Pro.

To reassemble your device, follow these instructions in reverse order.