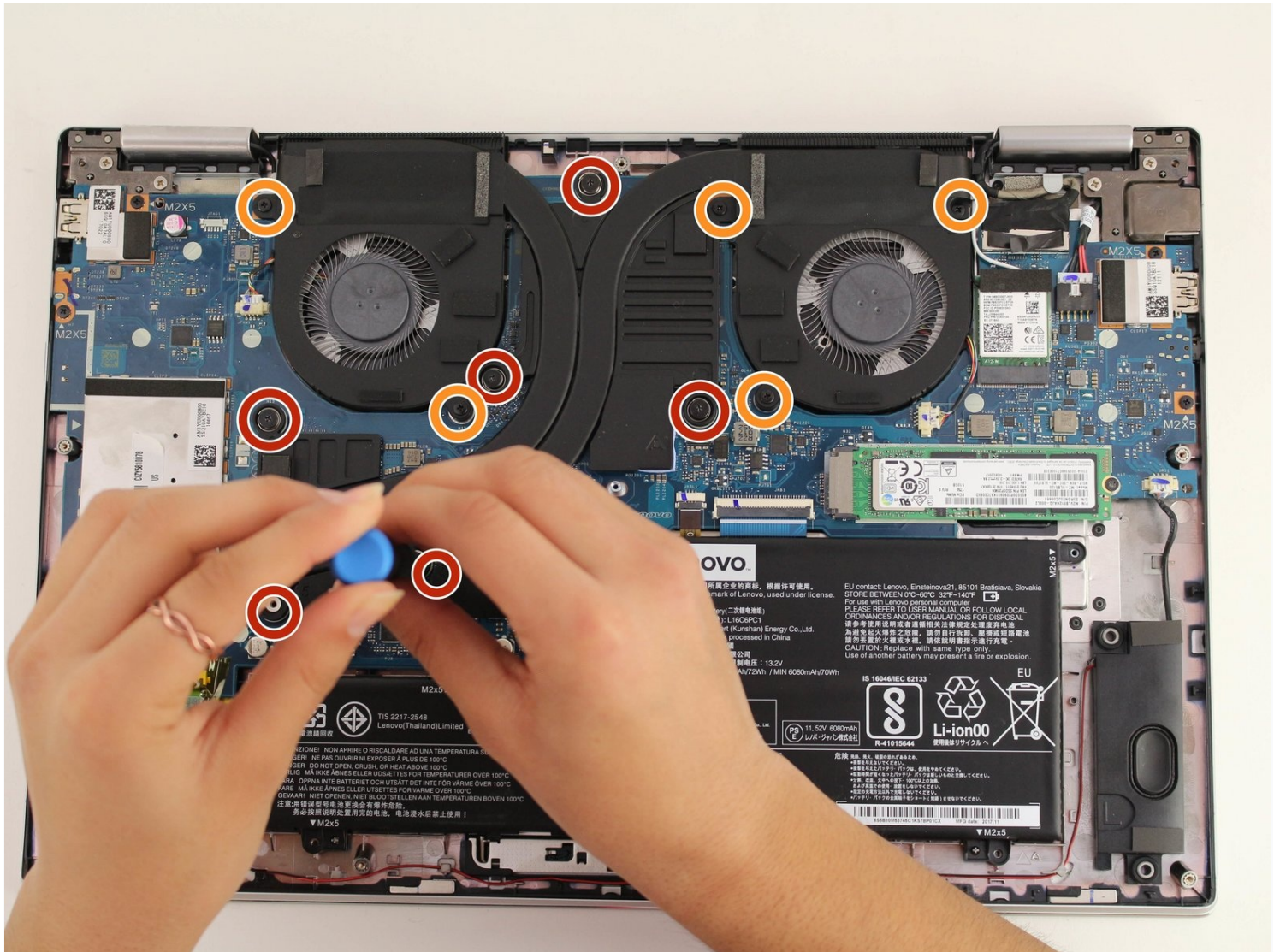




# Lenovo Yoga 720-15IKB Fan Replacement

This guide shows you how to replace the Lenovo...

Written By: Shaina Bagri



# INTRODUCTION

This guide shows you how to replace the Lenovo Yoga 720 15-IKB (88YG7000828) fan. This laptop is very similar to the Lenovo Yoga 720 13-inch , the Yoga 710, and the Yoga 730. The fan replacement for all of these models will be similar. A faulty fan can cause the laptop to overheat, slowing down performance. These symptoms are further explained on the [troubleshooting page](#). The thermal paste is located underneath the fan. Refer to [this guide](#) if you would like to replace the thermal paste.

## 🔧 TOOLS:

[T5 Torx Screwdriver](#) (1)  
[iFixit Opening Tool](#) (1)  
[iFixit Opening Picks \(Set of 6\)](#) (1)

## ⚙️ PARTS:

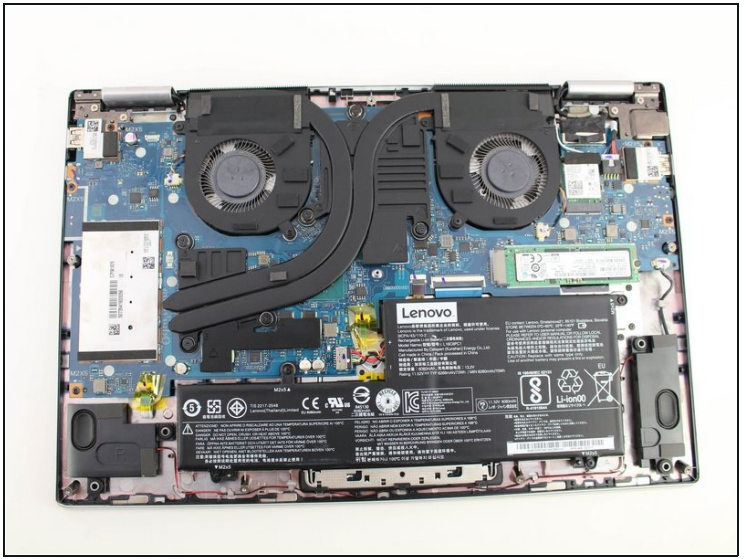
[Lenovo IdeaPad Yoga 720-15 Dual Processor Heat Sink Assembly](#) (1)  
[Lenovo IdeaPad Yoga 720-15 Dual Processor Aftermarket Heat Sink Assembly](#) (1)  
[Lenovo IdeaPad Yoga 720-15 Single Processor Heat Sink Assembly](#) (1)

## Step 1 — Bottom Cover



- Power off the device before starting.
- Flip the device over with the hinges facing away from you.
- Remove seven 5.0 mm Torx T5 screws.
- Remove three 9.5 mm Torx T5 screws.

## Step 2



- Pry around the edges from one side to another with a plastic opening tool.

⚠ Do not pry on the side with the hinges because this can break the cover.

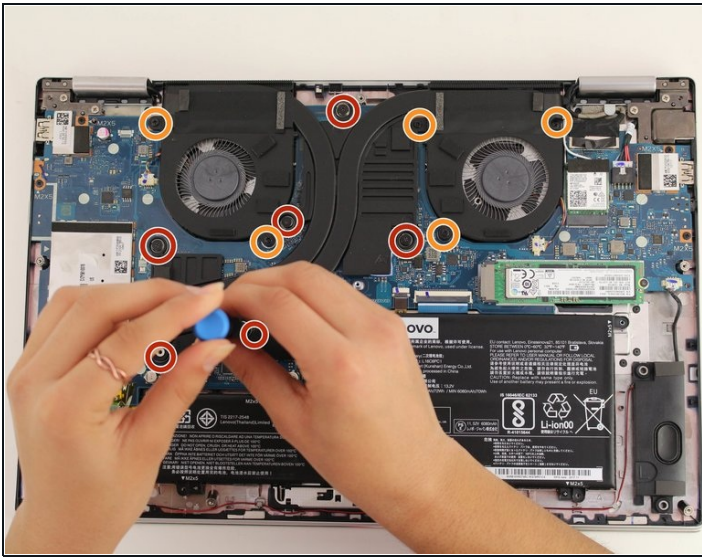
- Lift the case from the front until you feel resistance.

⚠ Do not keep lifting after you feel resistance, or the bottom cover can break.

- Pull the cover towards you, away from the hinges.
- Completely lift off the cover.

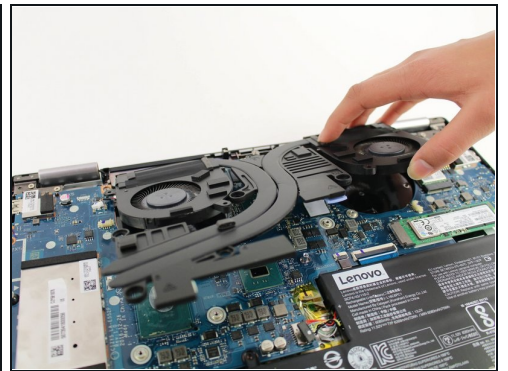
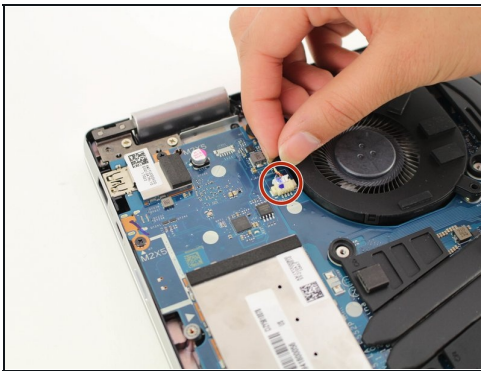


### Step 3 — Fan



- Remove the six 5.2mm Torx T5 screws holding the fan in place.
- Remove the five 5.0mm Torx T5 screws holding the fan in place.

### Step 4



- Disconnect the two fan wire connectors.
  - ❗ Firmly pull the connector out horizontally away from the socket.
- Carefully lift the fan up and out.

To reassemble your device, follow these instructions in reverse order.