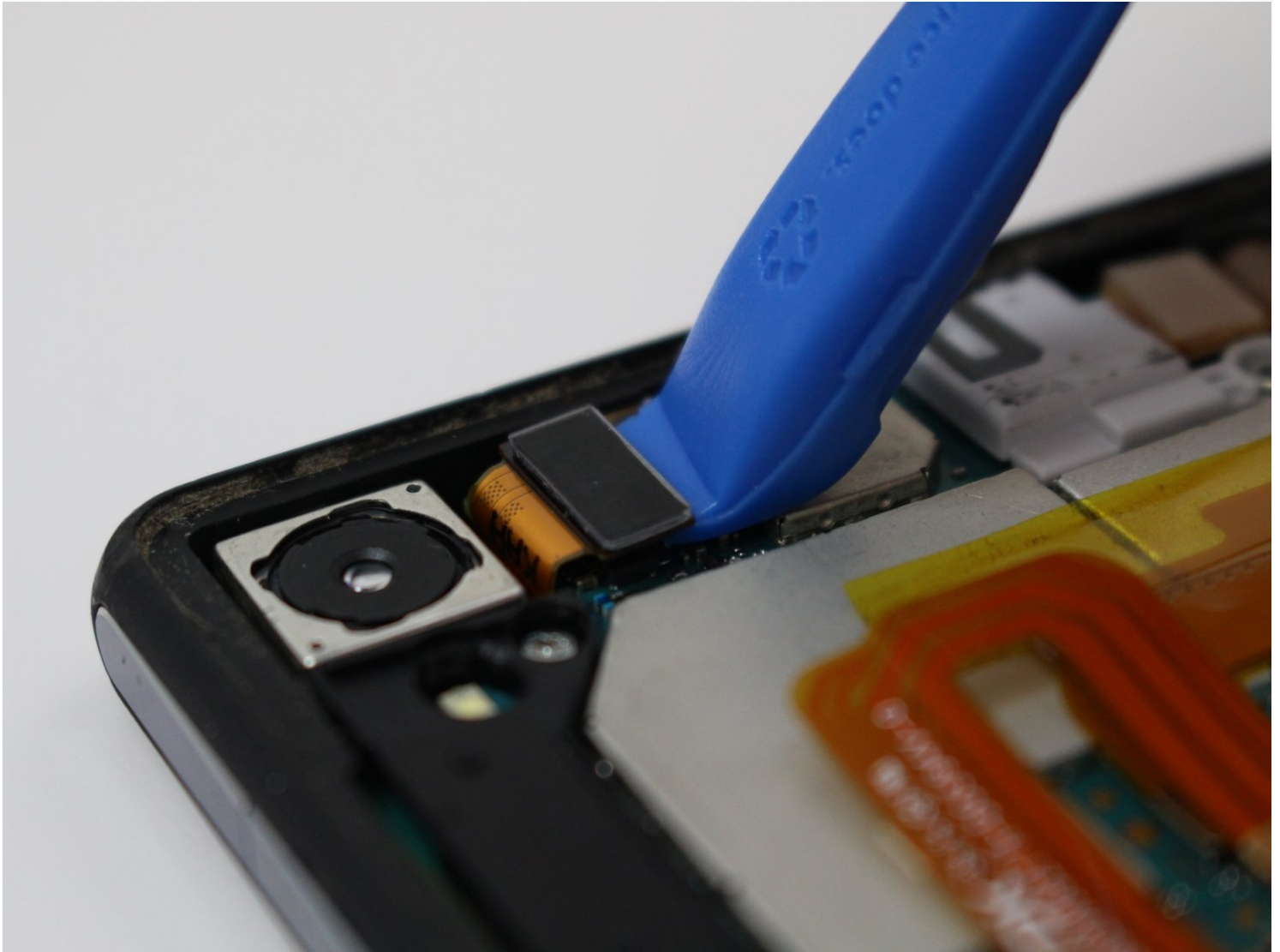




Sony Xperia Z1 Rear Camera Replacement

This guide will demonstrate how to replace the...

Written By: Elijah Sigua



INTRODUCTION

This guide will demonstrate how to replace the Sony Xperia Z1 rear camera and secure the rear camera connections which may be causing issues when capturing pictures.



TOOLS:

[Suction Handle](#) (1)
[Spudger](#) (1)
[Heat Gun](#) (1)
[Tweezers](#) (1)
[iFixit Opening Tool](#) (1)
[iFixit Opening Picks \(Set of 6\)](#) (1)



PARTS:

[Sony Xperia Z1 Rear Camera](#) (1)

Step 1 — Rear Camera



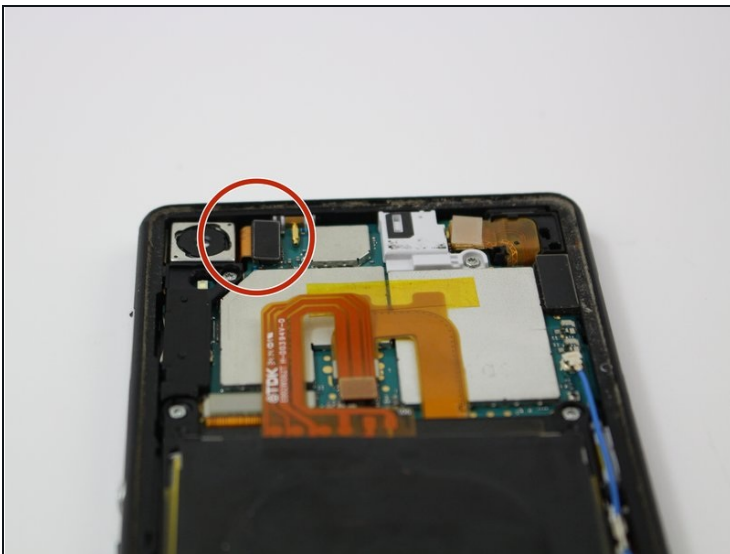
- With caution to hot temperatures, glide a heat gun over the outer edges of the phone bezel to soften the adhesive securing the back panel to the phone.

Step 2



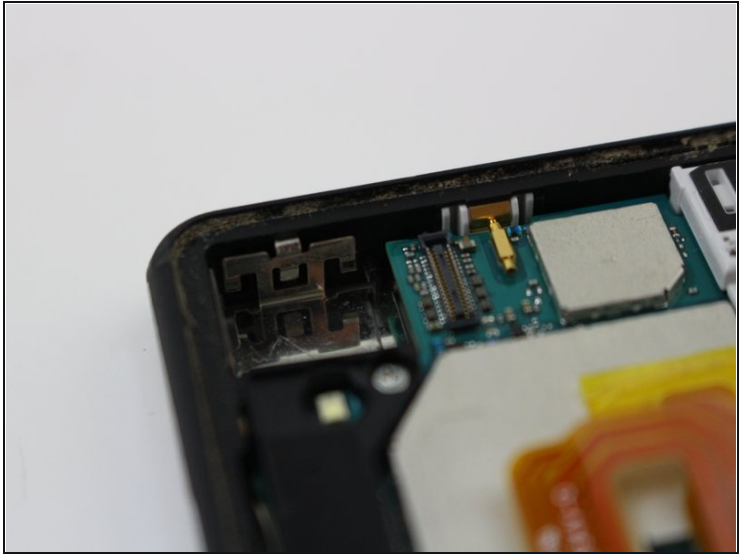
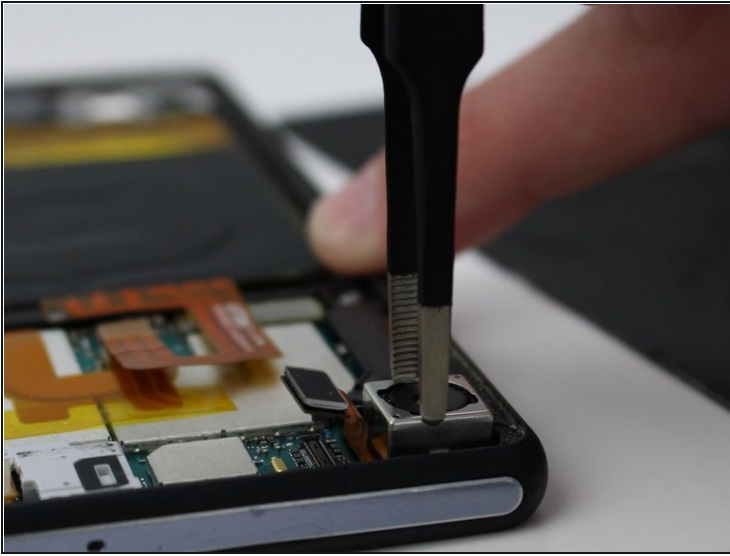
- Apply a suction cup tool to the center of the back panel and gently pull the panel off the back of the phone.
- ① If you are experiencing difficulty, use a plastic opening pick to slide into the crack in between the panel and the rest of the phone body to pry off the back.

Step 3



- Using the plastic opening tool, carefully pry off the flex connector beside the camera housing.

Step 4



- Use the [tweezers](#) to pull the camera out of the top left corner of the phone.

To reassemble your device, follow these instructions in reverse order.