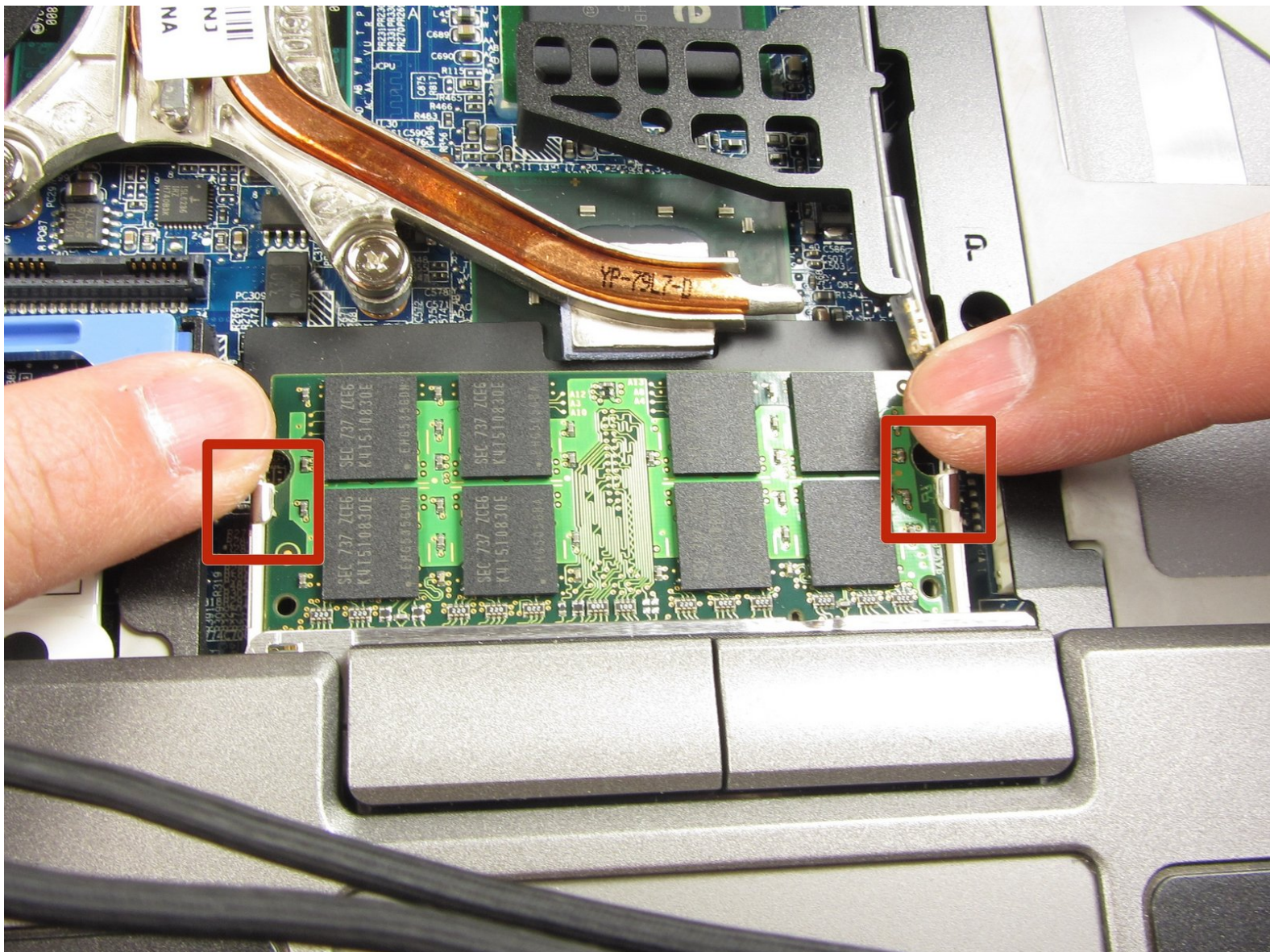




Dell Latitude D630 RAM (Slot A) Replacement

This guide will help you install new RAM in your Dell Latitude D630.

Written By: Jon Amireh



INTRODUCTION

Use this guide to upgrade or replace the RAM in your Dell Latitude D630. RAM is your laptop's temporary memory, and insufficient or failing RAM can cause your computer to run slowly or not at all.

TOOLS:

- [Phillips #0 Screwdriver](#) (1)
 - [Spudger](#) (1)
-

Step 1 — Battery



- Shutdown the computer, detach it from any power source, and make sure the laptop is closed with its latch securely shut.
- Turn the laptop over so its bottom is facing you.
- ⓘ The laptop pictured comes with a palm rest attached to the battery case. This part may not be present on your laptop. Regardless, the steps are exactly the same.

Step 2



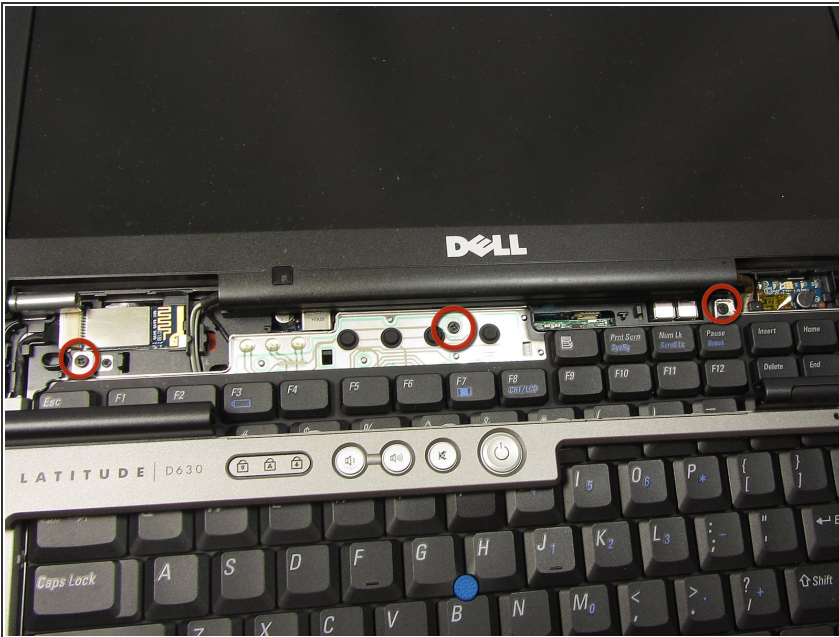
- Using two index fingers, slide the battery latches outward.
- While still holding the latches out, use your thumbs to slide the battery out towards you.
- Once the battery is dislodged, you can let go of the latches and remove the battery.

Step 3 — Keyboard



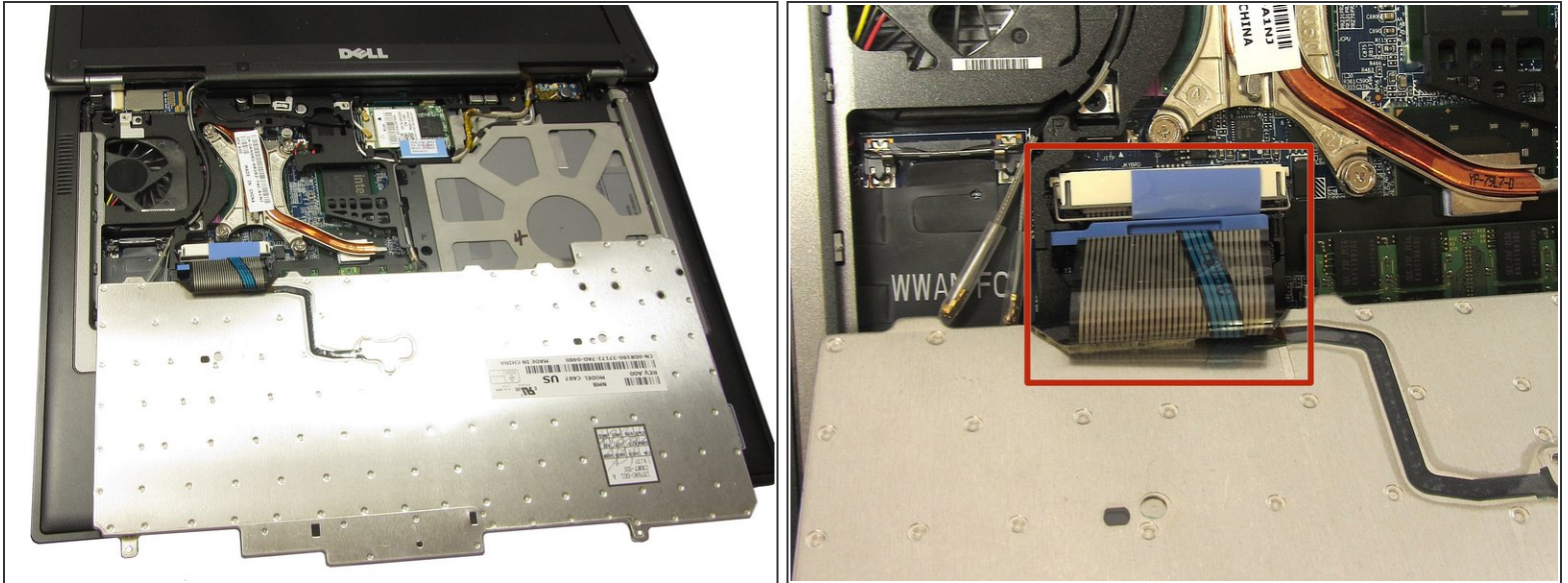
- With the battery removed, turn the laptop face up and open the lid a complete 180 degrees.
- Using a plastic opening tool, pry off the corner of the keyboard bezel by undoing the tab.
- Once you've removed the corner of the bezel, you can use your hands to slowly, but with moderate force, pull the rest of the bezel slightly up and towards you to release the remaining tabs.

Step 4



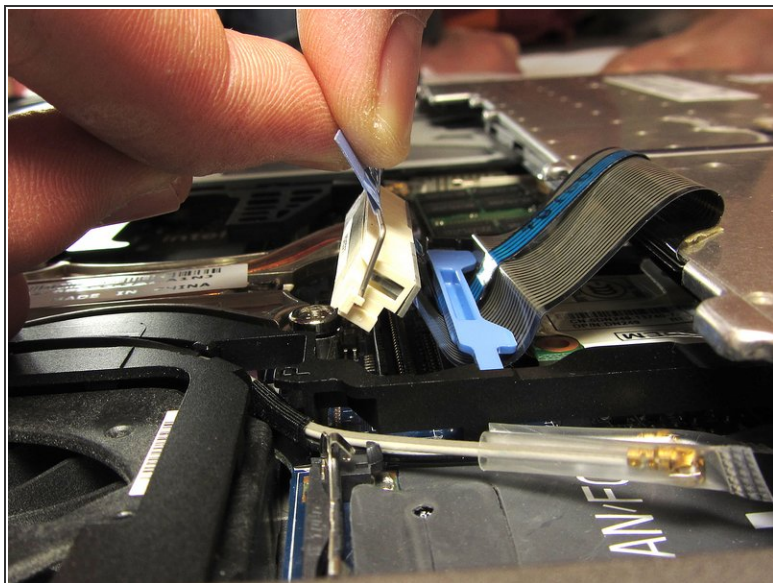
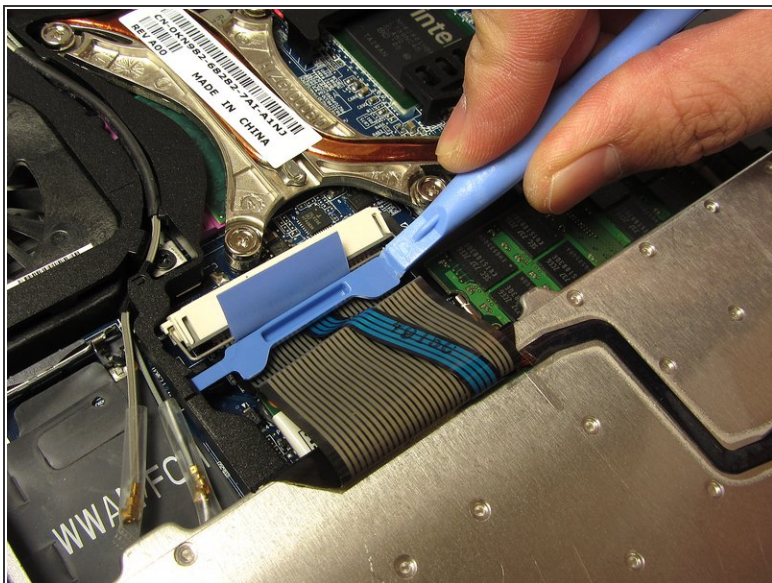
- Remove the three 3mm Phillips #0 screws securing the keyboard.

Step 5



- Slowly bring the keyboard up and fold it back onto the touchpad.
- ⚠ Be careful not to pull too hard or too far when folding over the keyboard. The keyboard is still connected to the motherboard by a short ribbon cable.

Step 6



- Use a plastic opening tool to unhook the blue latch that secures the keyboard cable.
- Using the blue tab, pull the keyboard cable connector from its socket on the motherboard.

Step 7 — RAM (Slot B)



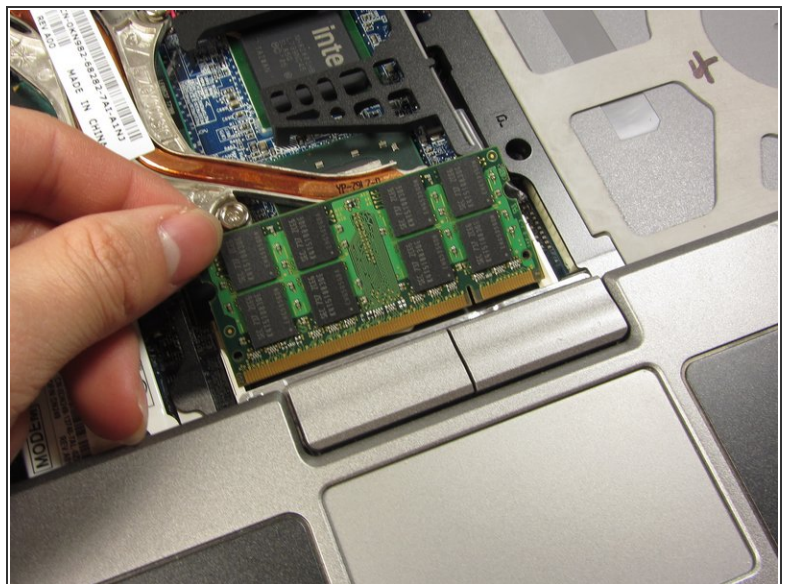
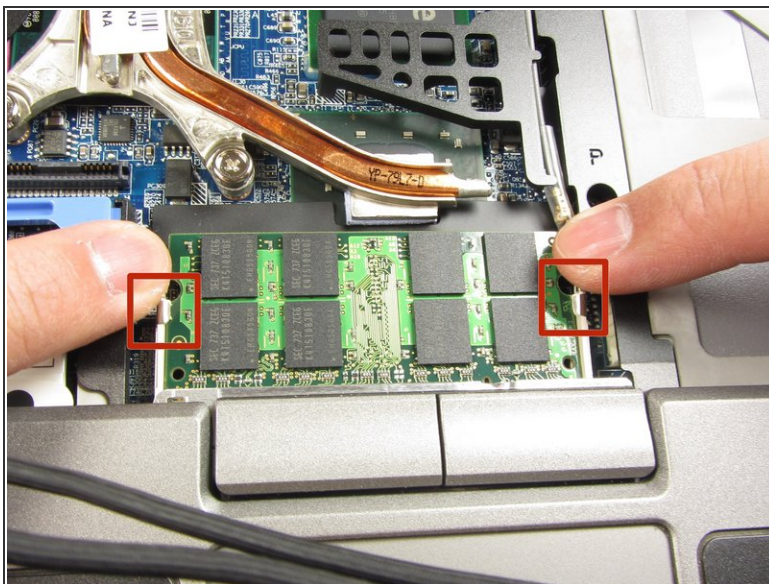
- Locate and unscrew the captive screw indicated in the picture on the left to detach the panel.

Step 8



- Use your fingers to push out the latches holding the RAM in place.
- The RAM should now sit up at an angle so you can safely remove it.

Step 9 — RAM (Slot A)



- Use your fingers to push out the latches holding the RAM in place.
- The RAM should now sit up at an angle so you can safely remove it.

To install the new RAM, set it in the slot at an angle and push it in until the latches reclick.