



# Xbox 360 S PSU Disassembly

Step by step guide for disassembling the Microsoft Xbox 360 S power supply

Written By: Navy Vet 2015



---

# INTRODUCTION

This guide can be used for repair/refurbishing purposes

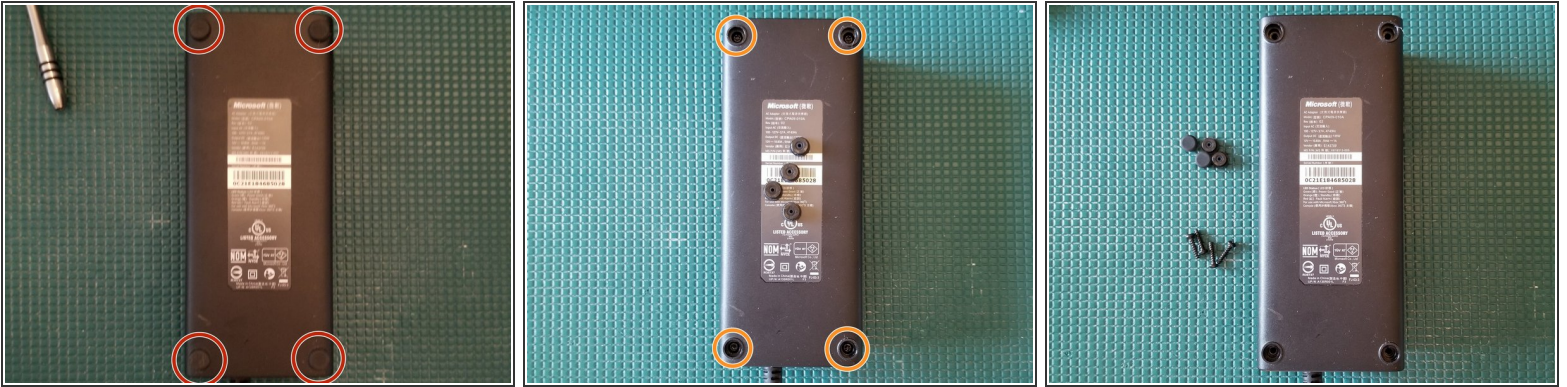
**DO NOT work on the power supply while it is plugged in or while the white/orange indicator light is on. High voltage capacitors, while charged, can seriously injure or kill you. Exercise caution during this repair.**



## TOOLS:

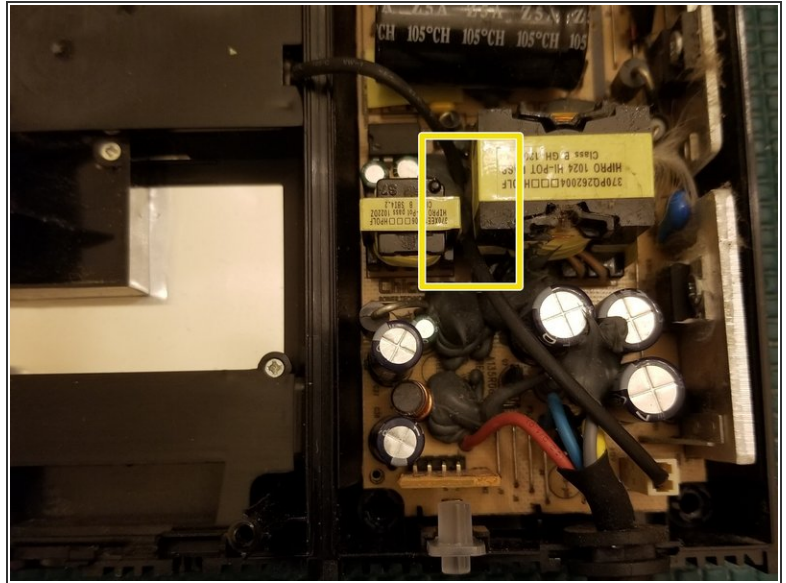
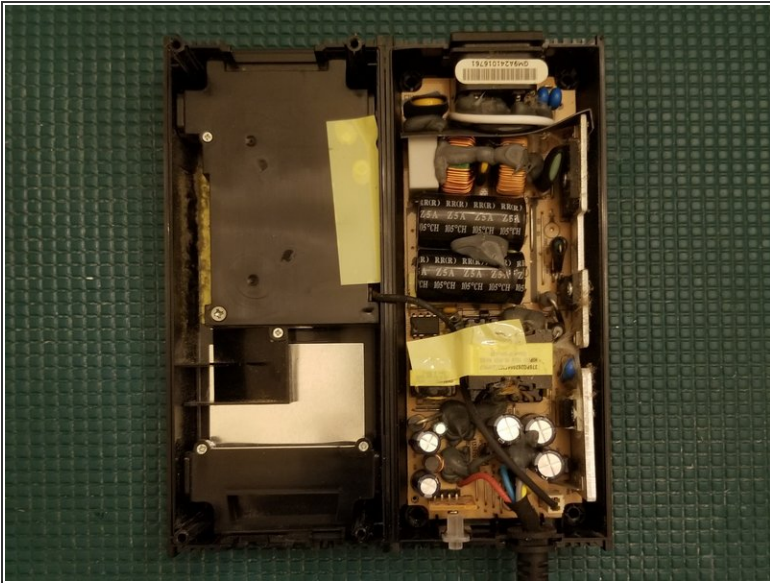
- [Metal Spudger](#) (1)
  - [T10 Torx Screwdriver](#) (1)
  - [Phillips #1 Screwdriver](#) (1)
  - [Phillips #2 Screwdriver](#) (1)
  - [Phillips #0 Screwdriver](#) (1)
  - [ChipQuik SMD Removal Kit](#) (1)
  - [Rosin Flux](#) (1)
  - [Desoldering Braid](#) (1)
  - [Kapton Tape](#) (1)
  - [Solder](#) (1)
  - [Soldering Iron](#) (1)
-

## Step 1 — Remove Rubber Boots/Screws



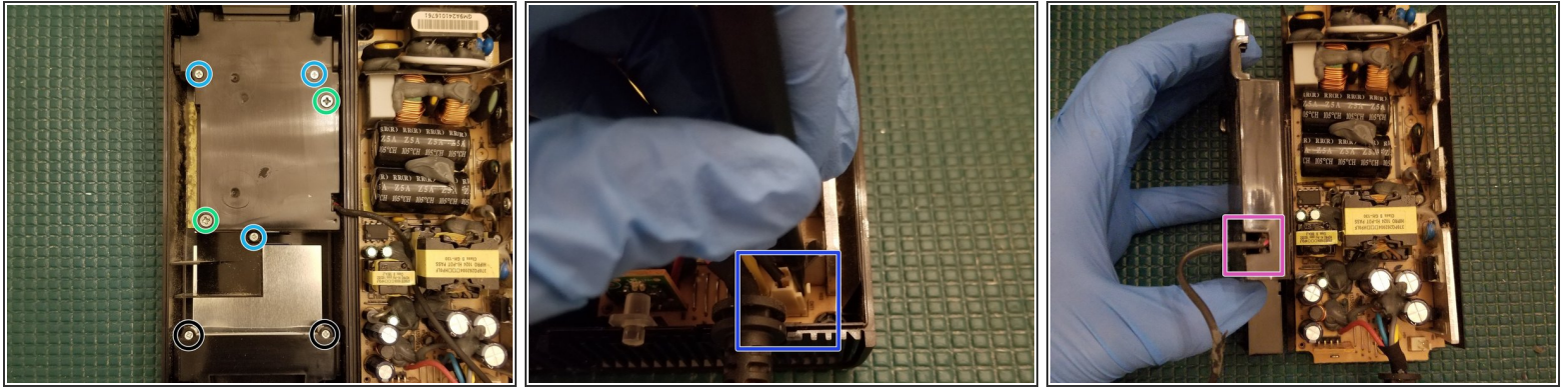
- Remove rubber boots
- Remove T10 Screws

## Step 2 — Cooling Fan Cable



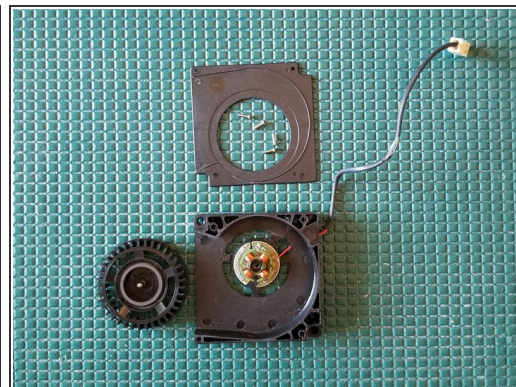
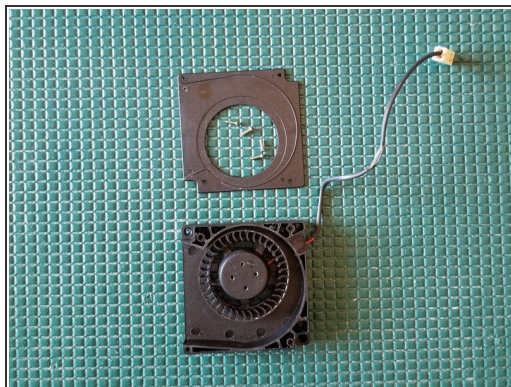
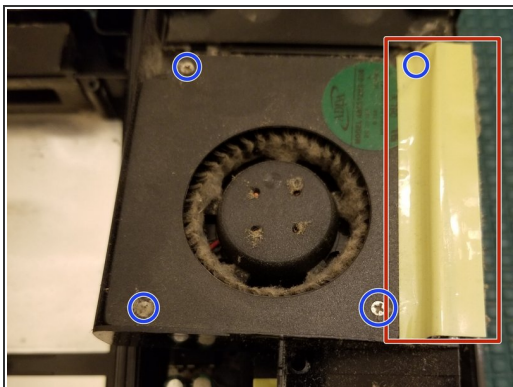
- Remove the top shell, flip it over, and place next to lower shell
- ⚠ The two halves are connected together via the cooling fan wire. BE GENTLE when separating them
- ⓘ In typical Microsoft fashion, they've made it complicated to remove the fan wire. Not only is it wedged between two transistors it's also adhered with an epoxy like substance.
- Using a craft knife, carefully cut through the epoxy to get the cable free. Work slowly and carefully. The thick substance and awkward angles make this a slightly tedious process
- ⚠ **Be VERY CAREFUL. You can easily cut the cable here accidentally. If you cut your red/black wires you'll have to patch them. "Slow is smooth, smooth is fast"**

## Step 3 — Cooling Fan Assembly



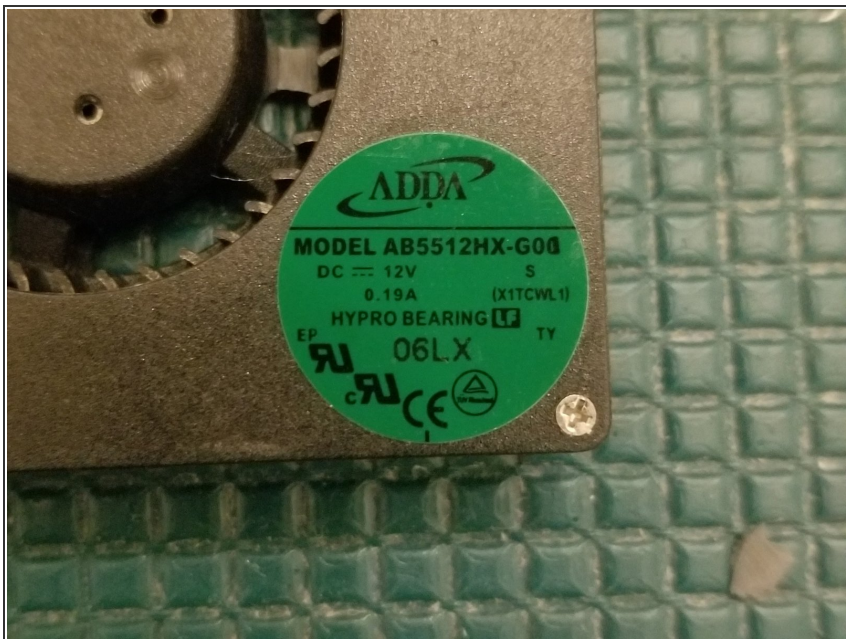
- Remove PH2 screws
- Remove PH1 screws
- Removal unnecessary
- Disconnect cooling fan plug
- Pull wire through

## Step 4 — Fan Disassembly



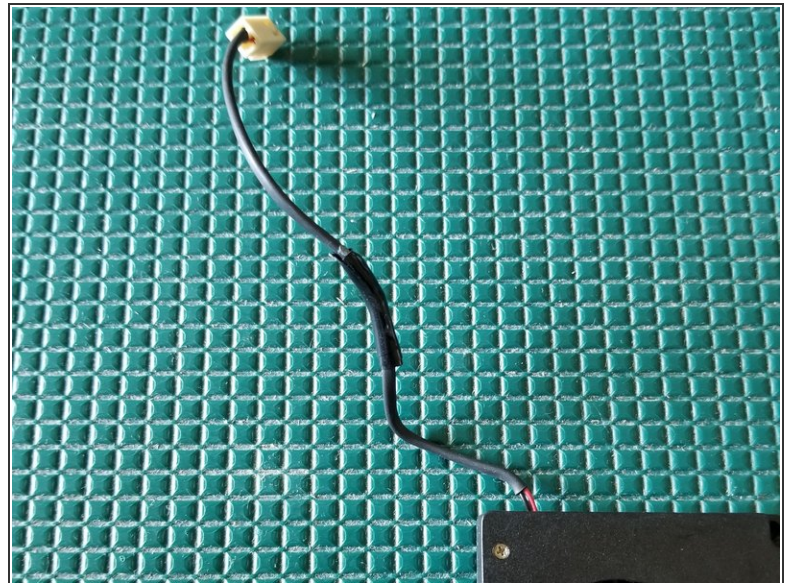
- Remove tape in order to remove fan from its housing unit. This also uncovers a hidden screw.
- Remove 4 PH0 screws
- ⓘ Tape will need to be replaced during reassembly. Electrical or kapton tape will suffice
- ⚠ Take note of the amount of filth collected on this fan. Inadequate cooling could kill your supply, or worse, become a fire hazard
- Remove fan upper housing plate
- Gently lift the fan up and over the post

## Step 5 — Fan Model Info



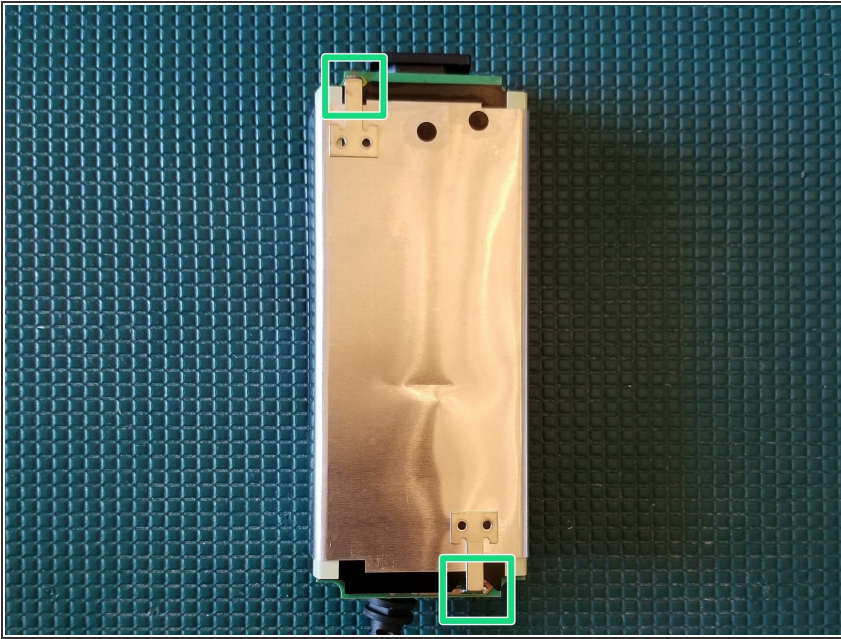
- Fan model info in case you need to search out new parts

## Step 6 — Repair Fan Cable If Necessary



- The fans +/- wires are covered by a thin protective sleeve.
- Apply some electrical or kaptom tape to patch it if necessary.
- i* Initially I tried to use shrink tubing here but the smallest diameter I could get around the plug was a 3/8" tube which will not properly seal around the cable when heated
- i* If you accidentally cut through the entire cable (+/- wires) you'll have to resolder them together and cover with shrink tubing.

## Step 7 — Underside Of PCB



- Remove PCB from lower shell and place face down
- ⓘ The metal shield must be removed in order to expose the bottom of the power supply PCB
- To quickly and safely remove I suggest using ChipQuik on the 2 single sided through holes. Alternatively you can use solder wick

To reassemble your device, follow these instructions in reverse order.