



# Toto E-Max Fill Valve Disassembly

Disassemble the fill valve to allow cleaning and replacement of the seal.

Written By: John Clements



---

## INTRODUCTION

These steps describe how to disassemble a Toto E-Max Fill Valve. Please note that one helpful commenter suggested that they did not need to remove the fill valve from the toilet before flushing it; you can therefore regard the early instructions on removing the fill valve from the toilet as possibly optional.



### TOOLS:

- [Flathead 3/32" or 2.5 mm Screwdriver](#) (1)
-

## Step 1 — Tank Lid



- Lift the tank lid up and away from the toilet tank.

## Step 2 — Shutting off the Water Supply to a Toilet



- Shut off the stop valve underneath the toilet by turning it clockwise until it becomes hand tight.

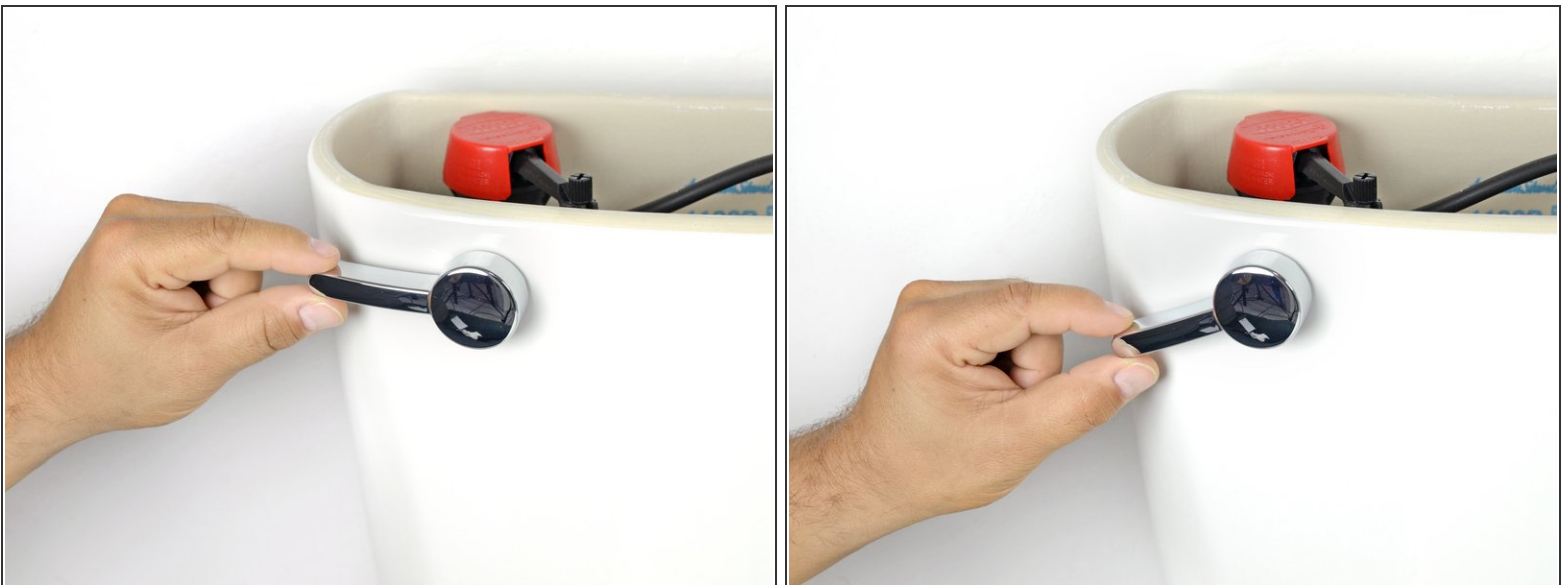
**i** The appearance of this valve may differ from toilet to toilet, but most operate the same. Some valves require multiple turns to stop the water while others only require a quarter turn.

### Step 3 — Refill Tube



- Disconnect the fill valve's rubber refill tube from the top of the overflow tube.

### Step 4 — Draining a Toilet Tank



- Push down the flush lever.
- Hold the lever down until water stops draining from the tank.
- i* A small amount of water will remain in the bottom of the tank.
- i* If the flush lever or pull chain have become disconnected, lift up the toilet flapper to drain the tank.



## Step 5 — Sponge Drying a Toilet Tank



- Use a sponge to soak up and remove any remaining water from the toilet tank.
- Periodically squeeze the excess water from the sponge.

## Step 6 — Supply Tube



- Place a bucket under the supply tube to catch any dripping water.
- Turn the coupling nut on the supply tube clockwise until it releases from the threaded shank on the bottom of the tank.

## Step 7 — Fill Valve



- Using an adjustable wrench, turn the locknut on the threaded shank counter-clockwise until it becomes loose.

## Step 8



- Turn the locknut counter-clockwise until it releases from the threaded shank.

## Step 9



- Lift the entire fill valve out of the tank.

- ☑ When installing a new valve, be sure to adjust the float so that the water line stops one inch below the overflow tube.

## Step 10 — Toto E-Max Fill Valve Disassembly



- This is our friend the Toto E-Max Fill valve. Unfortunately, she is leaking. Specifically, the shutoff is incomplete, so water continues to flow even after the float is fully lifted.



## Step 11 — Remove Top Cap



- The next step is to remove the green top cap. It's held on by tabs, light flexing should allow you to remove it.



## Step 12 — Remove the valve lever



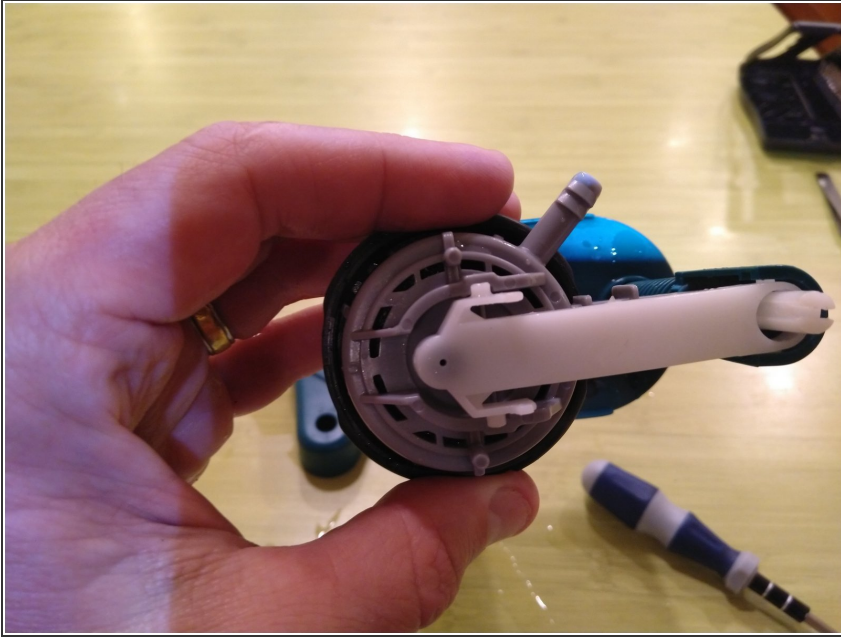
- Here is the valve lever[\*]. We need to remove it. It's held in by two pegs. Each one is attached to a flexible tang. use a thin blade or screwdriver to push each tang in, while gently lifting the lever.
- [\*] I have no idea if this is the right name.

## Step 13 — Continue removing valve lever



- Here we see one peg released. Note that I'm applying very gentle lifting pressure, not prying it upward.

## Step 14 — Release one end of valve lever



- Valve lever released! You are a champion. BTW, I made up the name "valve lever". I hope you're not laughing at me.

## Step 15 — Release other end of valve lever



- This is the other end of the valve lever. You should be able to easily release it from the green collar.



## Step 16 — Remove the collar



- Next, gently pop off the green collar that links the valve lever to the threaded float lift shaft.

## Step 17 — Disconnect float pole from top cap



- Gently snap the white float pole out of the jaws of the top cap. When you do this, the float assembly will drop.



## Step 18 — Rotate valve cover



- Rotate the valve cover an eighth of a turn counter-clockwise to release it.

## Step 19 — Admire valve seal



- Yay! We got to the valve seal. Clean it off or replace it, and reverse steps to reassemble.

To reassemble your device, follow these instructions in reverse order.