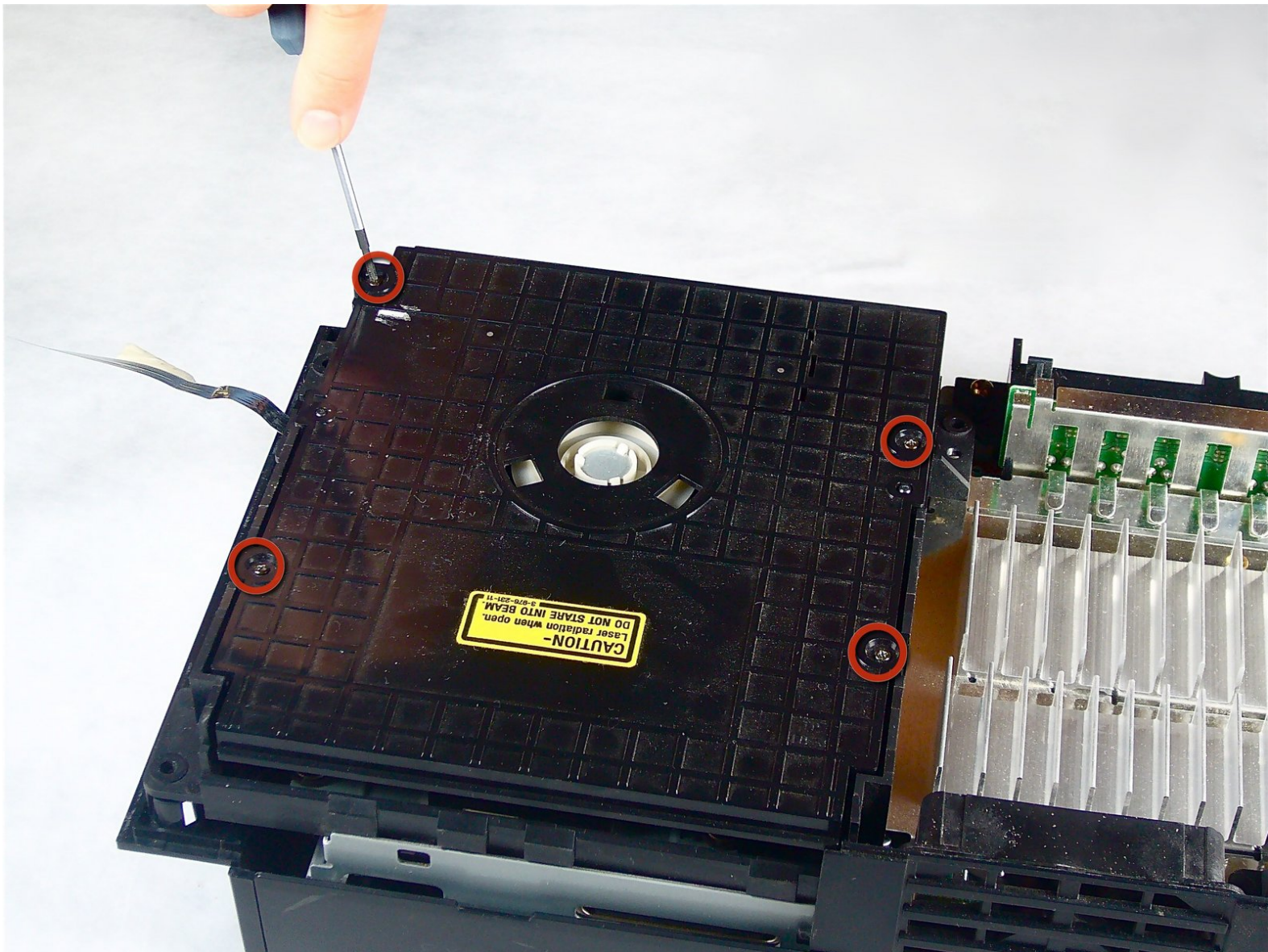




PlayStation 2 Optical Disc Drive Lens Cleaning

Clean the optical disc drive lens.

Written By: emessers



INTRODUCTION

The "Disc Read Error" is one of the most common, and possibly the most frustrating error you might encounter.

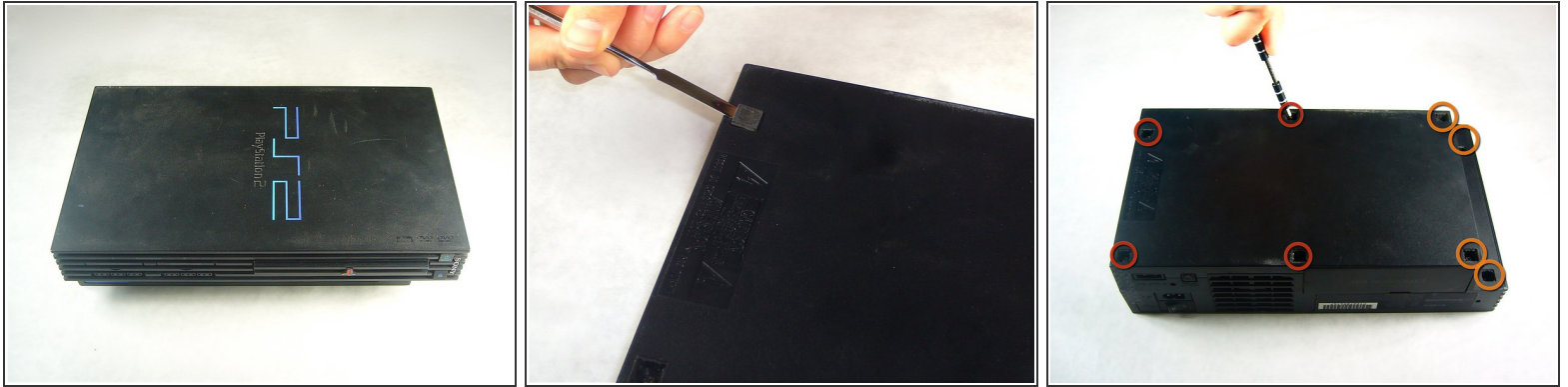
The problem occurs because dust or debris has accumulated on the lens. Luckily, it is easy to fix and takes a few short and simple steps!



TOOLS:

- [Phillips #1 Screwdriver](#) (1)
 - [Metal Spudger](#) (1)
 - [Phillips #00 Screwdriver](#) (1)
 - [Cotton Swabs](#) (1)
 - [High Content Rubbing Alcohol](#) (1)
-

Step 1 — Top Cover



✦ Flip the PlayStation 2 over so it lays with the bottom of the device facing upwards.

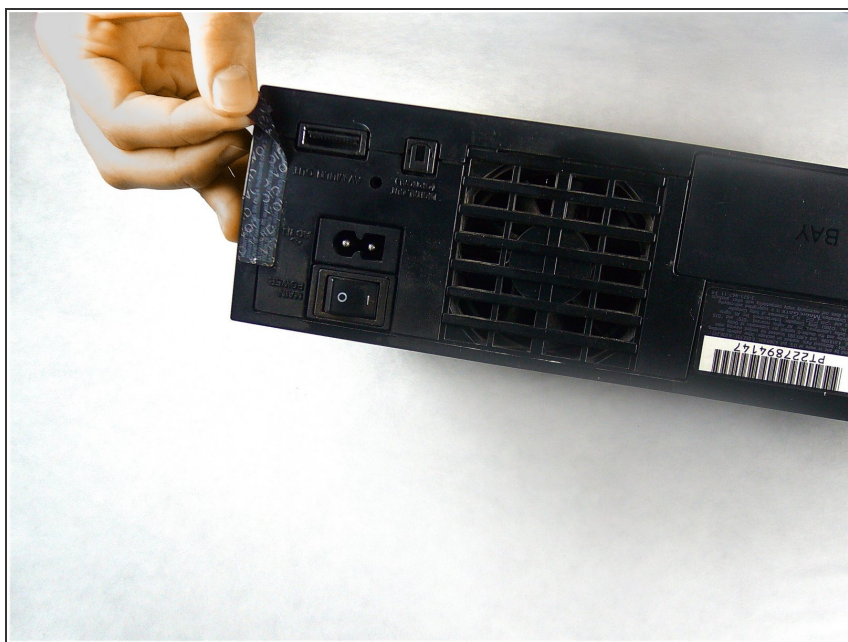
- Use the flat edge of a metal spudger to pry the eight flat screw covers out.
- Remove the following eight screws securing the top cover to the bottom case:
 - Four 55.4 mm Philips screws
 - Four 18.0 mm Phillips screws

Step 2



- Some models have a different number of screws and feet. Remove all the feet and screws in the bottom of the case.
- The 10 screw model has 6 screws in the bottom-most portion and 4 in the upper tray.

Step 3



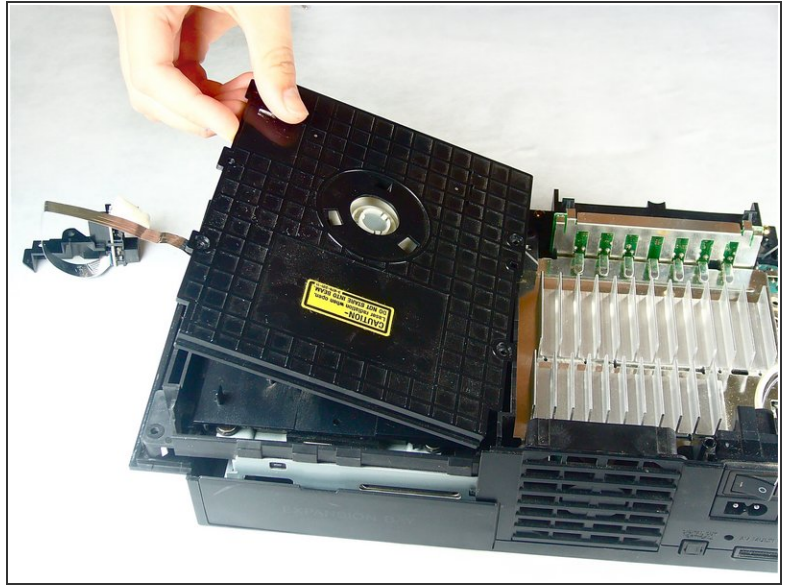
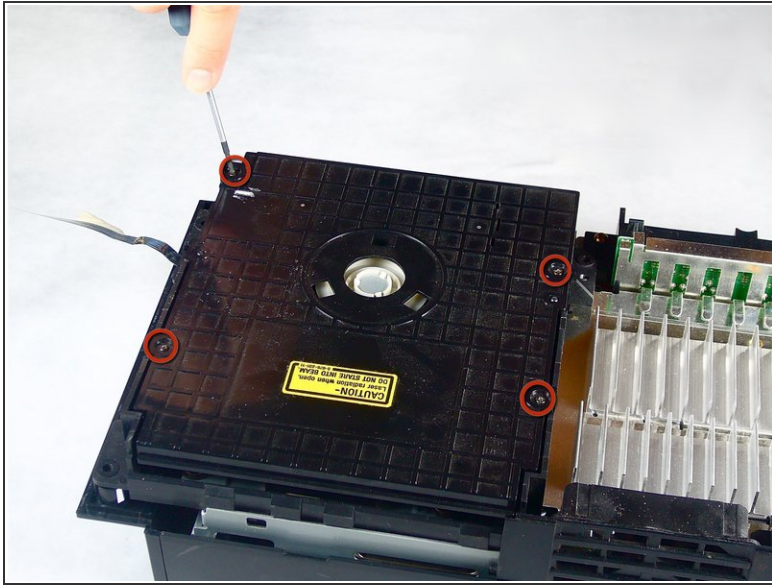
- Peel the warranty sticker (located next to the main power switch) straight away from the case.
- ⓘ To avoid activating the VOID that may come up, heat it carefully to remove and replace it clean

Step 4



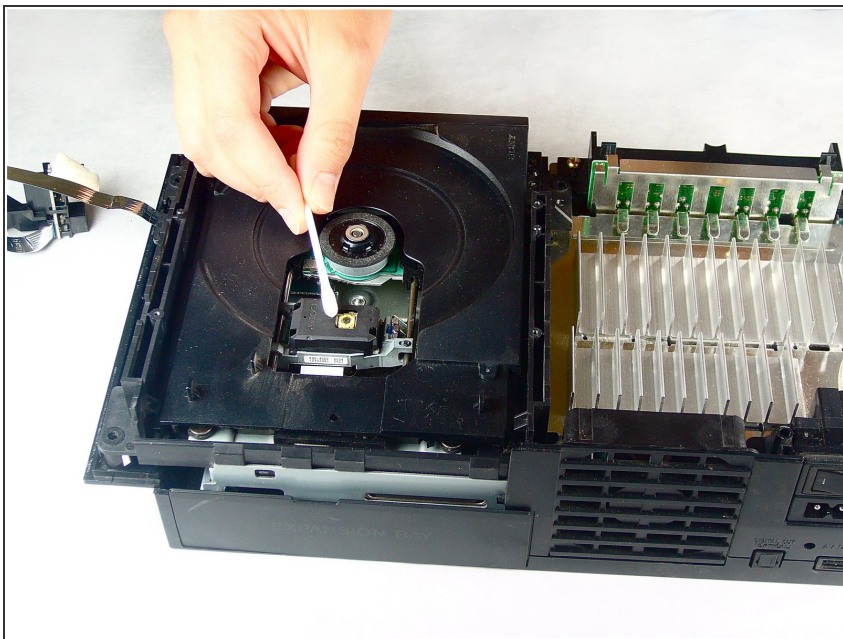
- ✦ Flip the PlayStation 2 back to its original upside position.
- Lift the top cover off the bottom case.
- ⓘ To facilitate the removal, it is recommended to pry open the half closer to the power switch first while rocking the top cover towards the front of the bottom case.
- Carefully remove the power cord that attaches the top and bottom halves by disconnecting the power cord assembly from the top case.

Step 5 — PlayStation 2 Optical Disc Drive Lens Cleaning



- Remove the four 6.4 mm Phillips screws securing the top lid of the optical disc drive.
- Lift and remove the lid from the optical disc drive.

Step 6



- Carefully wipe the lens in a circular motion with a rubbing alcohol damped Q-Tip.
- ⚠ Do not over-dampen the Q-Tip with rubbing alcohol.
- ☑ Allow a few minutes for the rubbing alcohol to evaporate.

To reassemble your device, follow these instructions in reverse order.