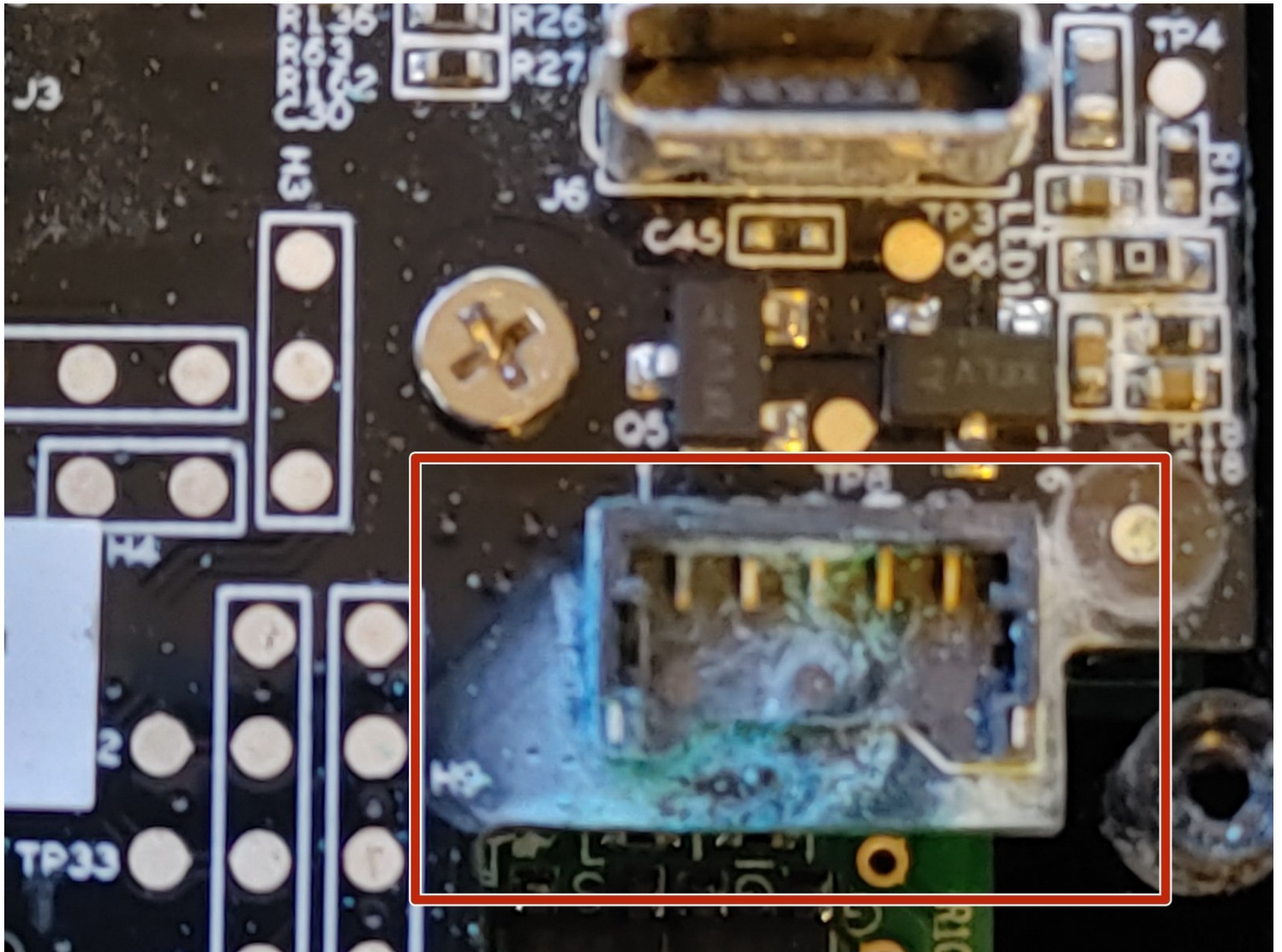




# Remove corrosion from battery terminal

If the Ring video doorbell battery dies, you...

Written By: JACOB SCHRIER



# INTRODUCTION

If the Ring video doorbell battery dies, you connect it to a charger, and it quickly claims to be fully charged but then dies shortly after being removed from the charger you may need remove some corrosion from the battery terminals, or other areas of the PCB.

## TOOLS:

[iFixit Opening Tool](#) (1)

[Phillips #00 Screwdriver](#) (1)

[2.5 mm Flathead Screwdriver](#) (1)

[Philips Head Screwdriver Sized J00](#) (1)

*The screws are prone to stripping*

[Distilled White Vinegar](#) (1)

[Q-Tips](#) (1)

[Dielectric Grease](#) (1)

[Isopropyl Alcohol](#) (1)

[Phillips #0 Screwdriver](#) (1)

## Step 1 — Face plate removal



- Start by removing the 4 screws to take off the aluminum faceplate.

## Step 2



- Pry the aluminum face-plate carefully using a plastic spudger while applying gentle pressure. This will reveal the 4 black screws underneath.
- ① You will need a micro phillips screwdriver to remove these tiny screws. You will find that it requires considerable torque to loosen them, so to avoid stripping the head, really push in with the screwdriver while applying torque.

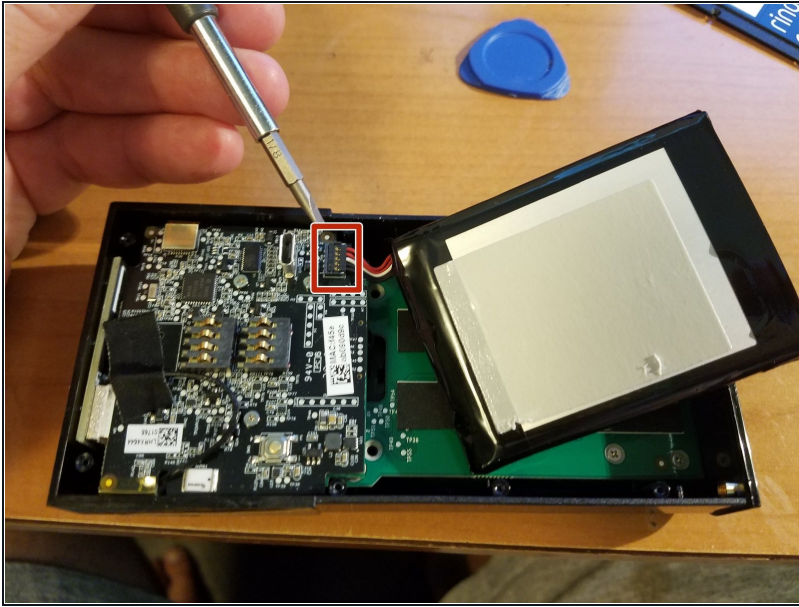
### Step 3



- Carefully pry the plastic cover with a pick to pop the insert out. Watch the micro USB port that is sticking out.



## Step 4



- Gently pry up the battery from underneath the connector. But remember the orientation, red wires to the outside exposed wire on the connector facing upward.

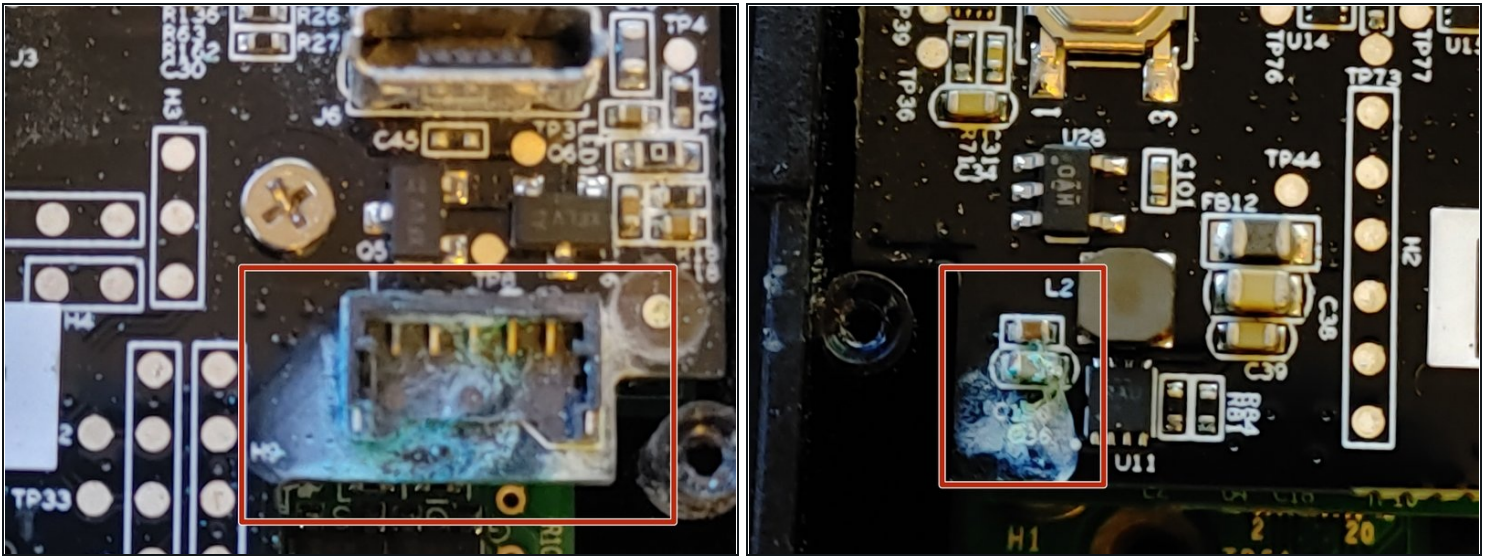
⚠ The battery **MAY** still be attached to the plate. Buy some double sided tape, because disposal of the old battery will likely include the existing tape.

## Step 5



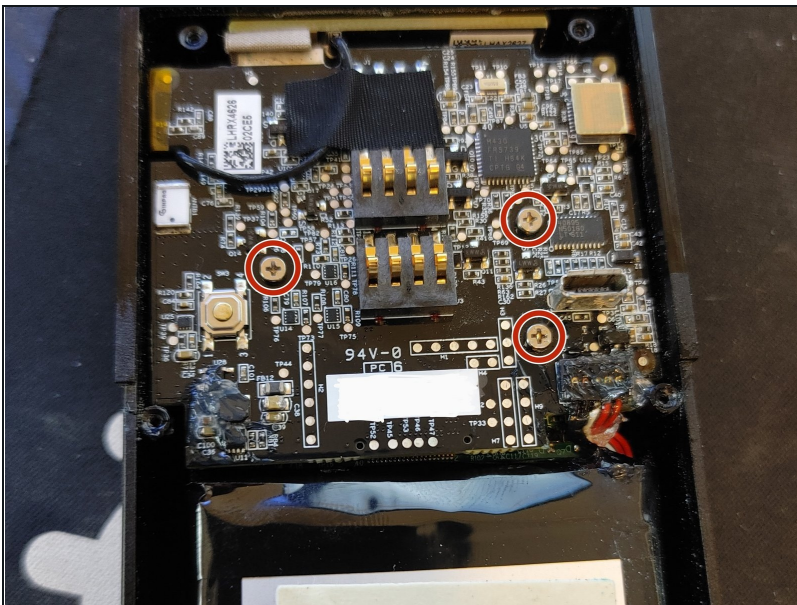
- Two Lithium polymer batteries are connected back to back and in parallel to the regulator. The batteries are rated at 9.47w @ 3.75v each.
- When you are satisfied that the battery is properly installed, the new battery should have enough charge that you will see at least one of several LED's light up. You can then close up. But if not, charge the unit via USB to see if the LED's are functioning. If not, check the battery connection.

## Step 6 — Examine the motherboard for any corrosion



- Examine your ring video doorbell motherboard for corrosion on any resistors, capacitors, or battery terminals.

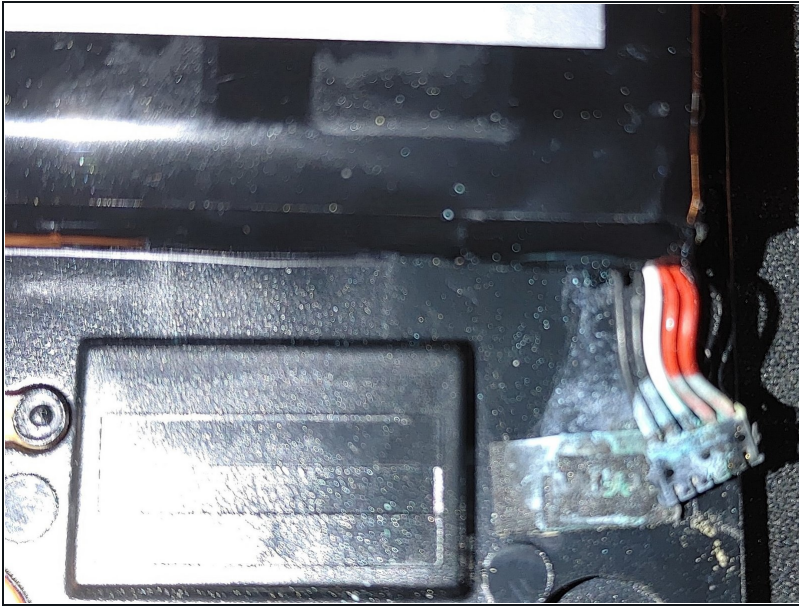
## Step 7 — Disconnect battery and Un-mount motherboard



- Disconnect the battery by lifting the connector straight up.
- Remove the three philips size 0 screws
- Lift the board carefully and rotate it to the right so as to leave the camera connection alone.
- Examine the rear of the top pcb, and the face of the lower pcb.



## Step 8 — Clean corrosion with vinegar, alcohol, and coat with dielectric grease



- Using white vinegar, clean any corrosion off of the battery terminals or anywhere else you find it, including the battery cables.
- Then use isopropyl alcohol to clean the vinegar off of the pcb.
- Coat the problem areas you just cleaned with dielectric grease of your choice.
- Reassemble in reverse order.

---

Once complete, follow the battery removal guide in reverse order to reassemble.