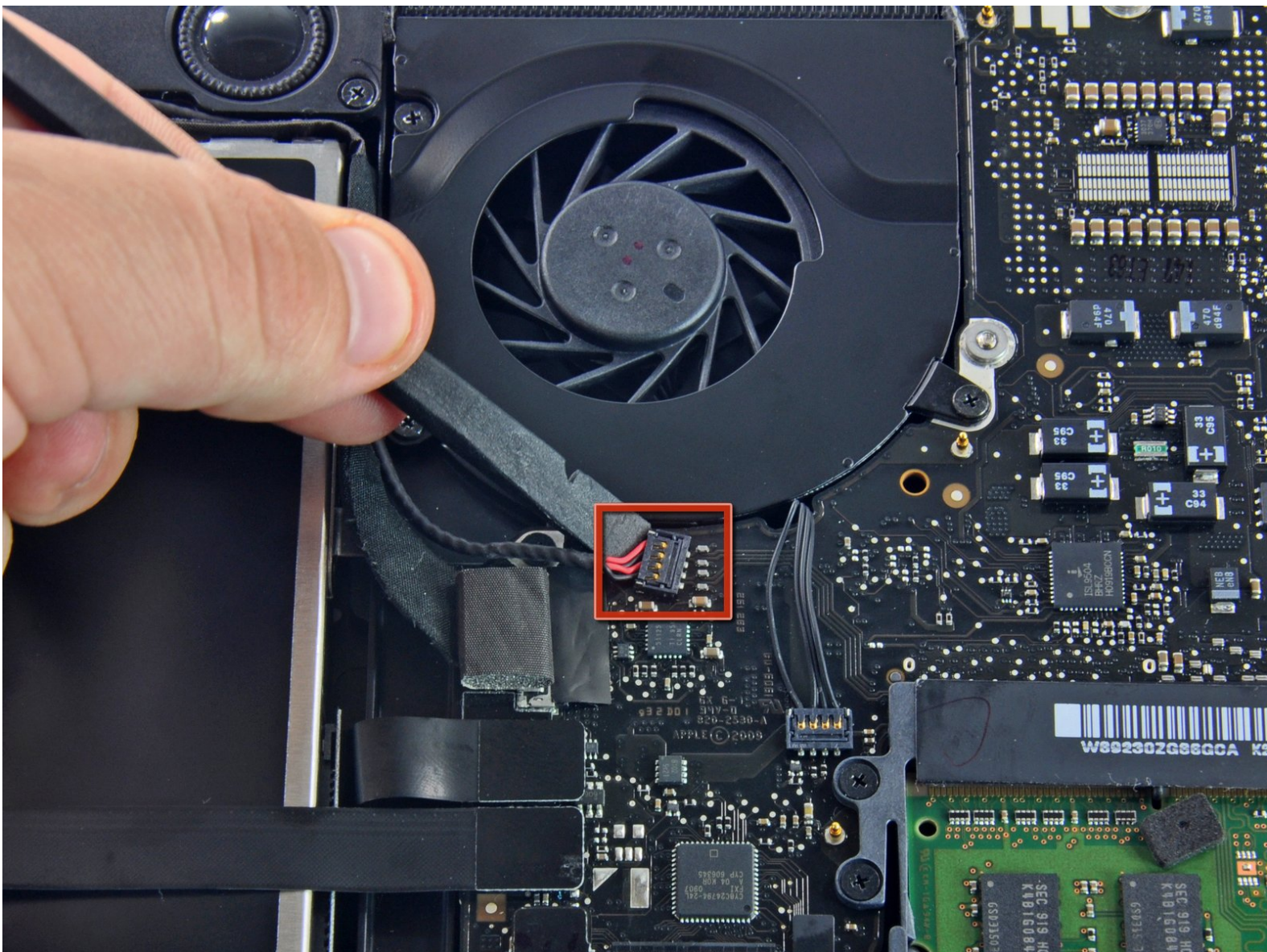




MacBook Pro 13" Unibody Mid 2009 Optical Drive Replacement

Written By: Walter Galan



INTRODUCTION

This guide is an internal private guide used as a prereg.

TOOLS:

- [Phillips #00 Screwdriver](#) (1)
 - [Spudger](#) (1)
-

Step 1 — Remove the lower case screws



- Remove the following 10 screws securing the lower case to the MacBook Pro 13" Unibody:
 - Seven 3 mm Phillips screws.
 - Three 13.5 mm Phillips screws.

Step 2 — Lift the lower case away



- Slightly lift the lower case and push it toward the rear of the computer to free the mounting tabs.

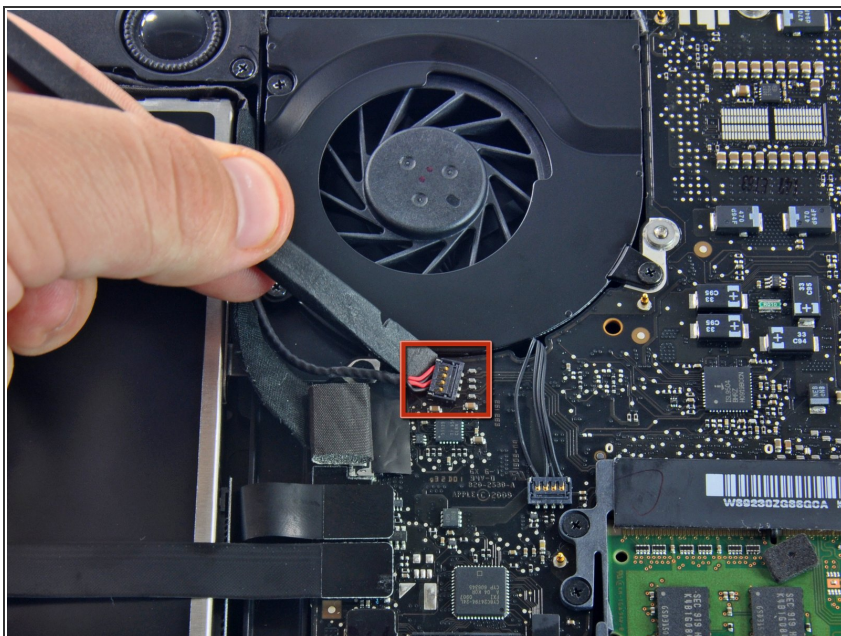
Step 3 — Battery



⚠ For precautionary purposes, we advise that you disconnect the battery connector from the logic board to avoid any electrical discharge.

- Use the flat end of a spudger to lift the battery connector up out of its socket on the logic board.

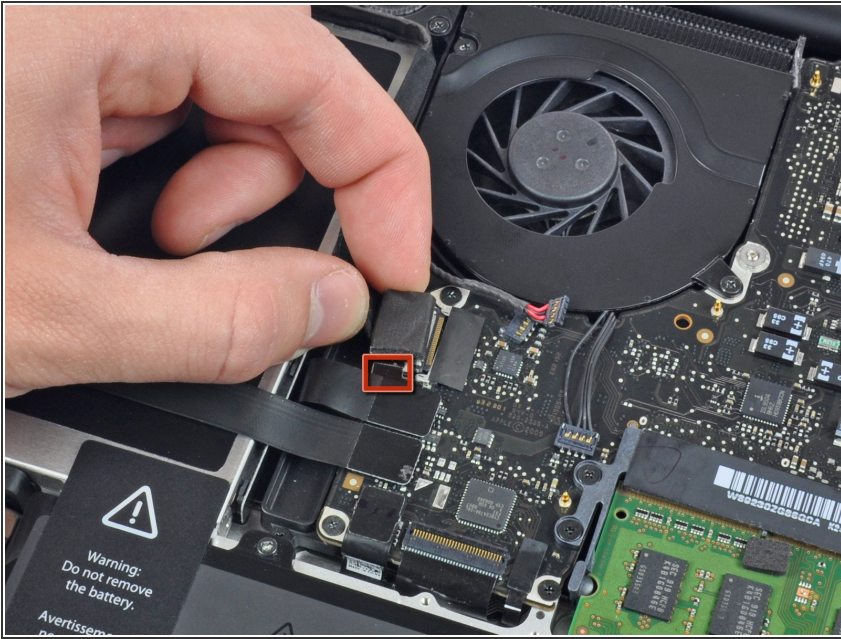
Step 4 — Optical Drive



- Using the flat end of a spudger, gently pry the right speaker/subwoofer cable connector straight up off the logic board. **Be careful not to lift the socket.** Pull the connector toward the optical drive.

ⓘ Pry up from beneath the wires.

Step 5



⚠ It will be necessary to slide the small clear plastic cable retainer (boxed in red) glued to the logic board out of the way before disconnecting the camera cable. Be careful not to break any components off the board as you slide it away from the camera cable connector.

- Pull the camera cable connector toward the optical drive to disconnect it from the logic board.
- ⓘ This socket is metal and easily bent. Be sure to align the connector with its socket on the logic board before mating the two pieces.

Step 6



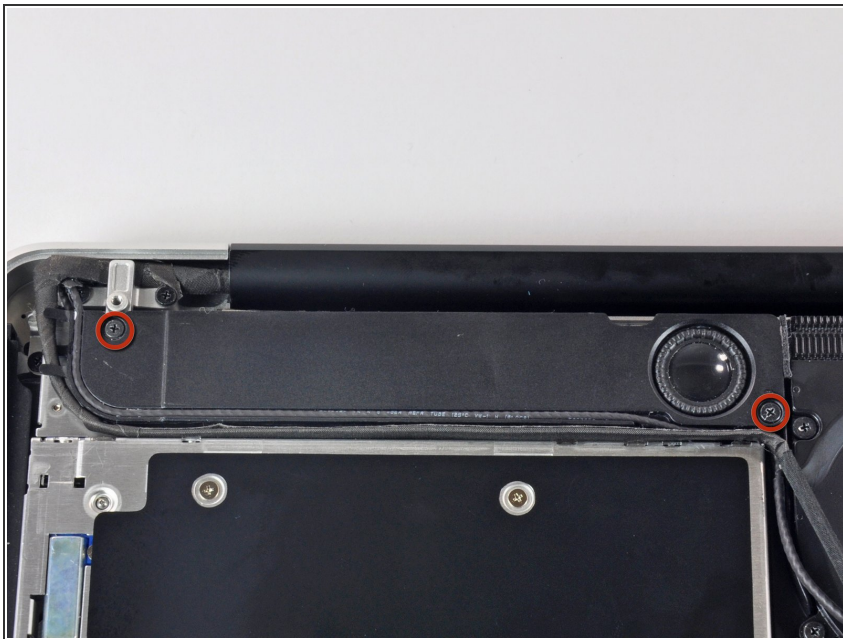
- Use the flat end of a spudger to pry the optical drive connector straight up off the logic board.

Step 7



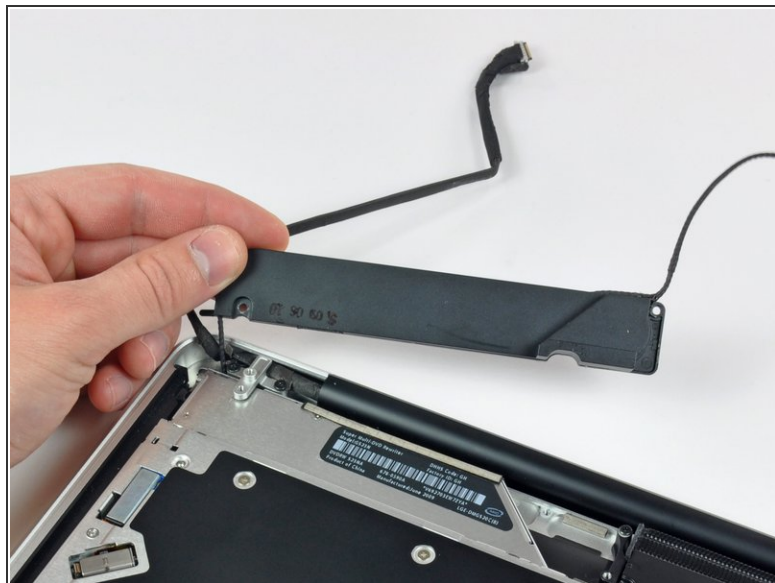
- Use the flat end of a spudger to pry the hard drive connector straight up off the logic board.

Step 8



- Remove the two Phillips screws securing the subwoofer to the upper case. The right one is 5 mm and the left 3.9 mm.
- ☑ The longer of the two screws is on the right.

Step 9



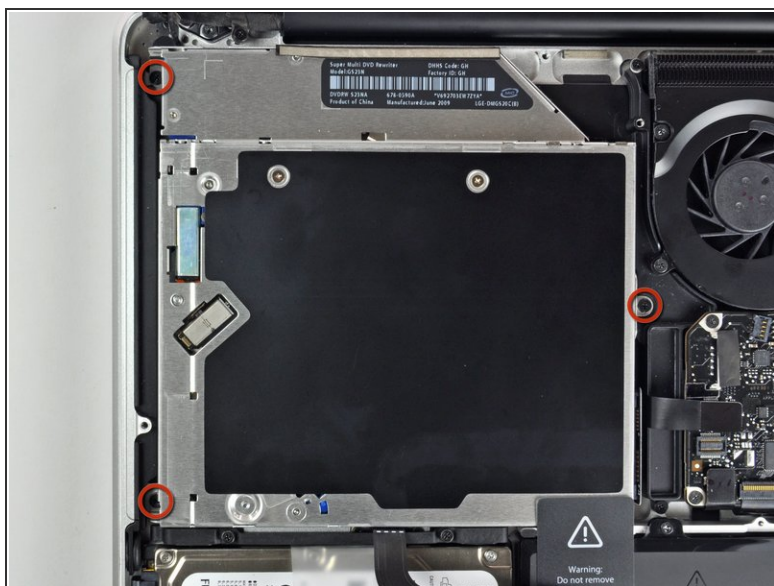
- ✦ The subwoofer is still connected to the right speaker, so don't completely remove it just yet.
- Lift the subwoofer off the optical drive, and set it above the computer.

Step 10



- Remove the two 8.4 mm Phillips screws securing the camera cable bracket to the upper case.
- ⓘ The right screw may remain captive in the camera cable.
- Lift the camera cable bracket out of the upper case.

Step 11



- Remove the three 2.5 mm Phillips screws securing the optical drive to the upper case.
- Lift the optical drive from its right edge and pull it out of the computer.

To reassemble your device, follow these instructions in reverse order.