



# How to Fix a Whirlpool WDF330PAHW Door Latch

This Fast Fix will allow consumers to fix a broken door latch on a Whirlpool WDF330PAHW 24" dishwasher machine.

Written By: Magdalene Cannon



## INTRODUCTION

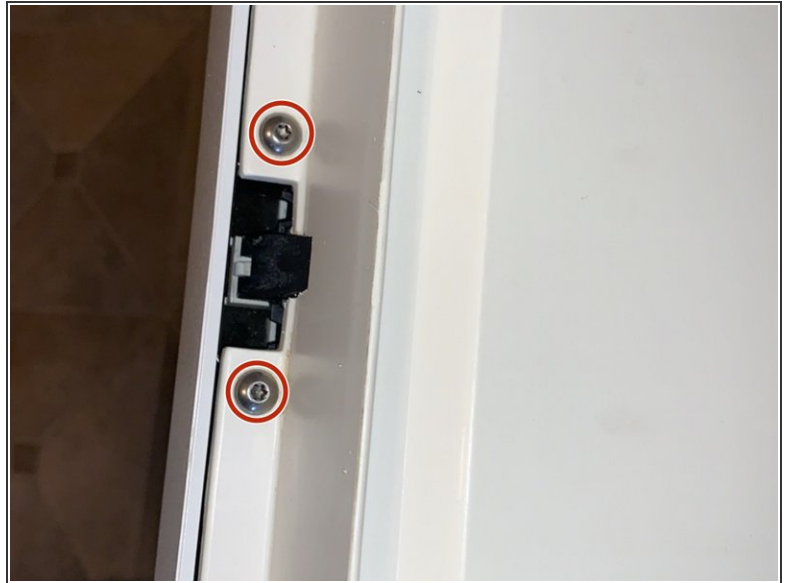
If you need help to fix a Whirlpool WDF330PAHW 24" dishwasher door latch, this Fastfix is a reliable guide. If you are having trouble closing your dishwasher door it may be because the latch is bent. Completing these simple steps you will be able to close your dishwasher properly. This will not only make you feel confident, but will also save you money and eliminate waste.



### TOOLS:

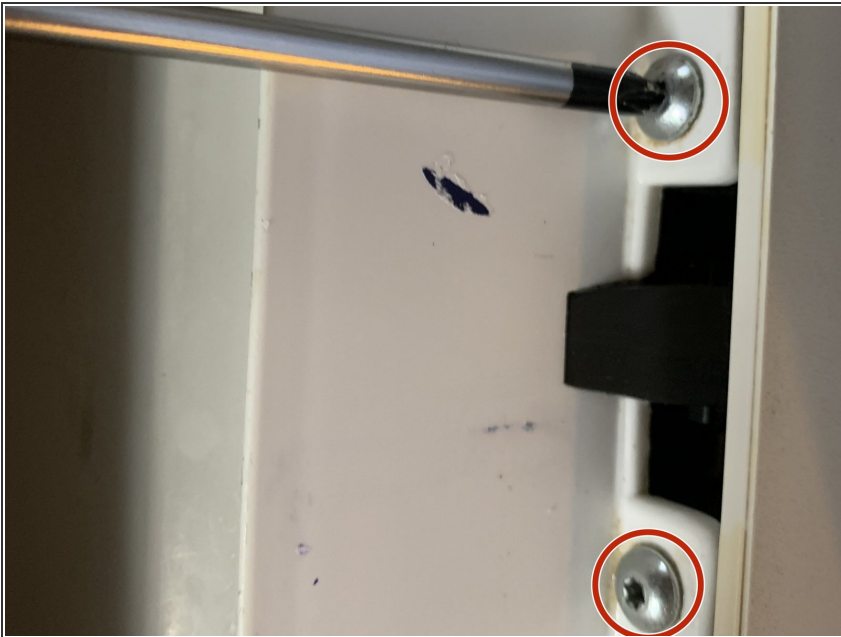
- [T8 Torx Screwdriver](#) (1)

## Step 1 — How to Fix a Whirlpool WDF330PAHW Door Latch



- Open the dishwasher door and look for the retaining screws around the side edge and top edge of the dishwasher door.

## Step 2



- Using a T8 Torx screwdriver remove the two screws by turning counter clockwise.

### Step 3



- Lift the inner panel enough that you can loosen the two securing bolts on the door latch with the wrench.
- When loosening the two bolts, leave them in and don't remove them.



## Step 4



- Carefully raise the dishwasher door to align the door latch with the strike plate.

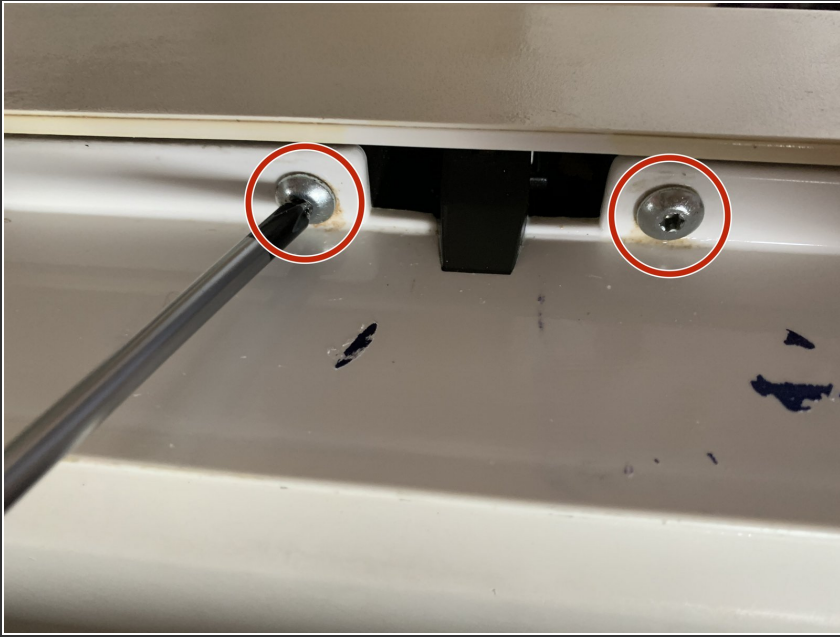
⚠ Watch fingers while raising dishwasher door.

## Step 5



- Hold the door latch with your finger tips to align the door latch.
- Then lower the door and tighten the door latch securing bolts.

## Step 6



- Install the inner door panel retaining screws.
- Proceed to tighten two screws with the T8 Torx screwdriver.
- When tightening the two screws turn clockwise.
- Then close the dishwasher door.