



Philips Respironics V60 Alarm Speaker Replacement

This guide focuses on the replacement of the speakers in the Philips Respironics V60 ventilator.

Written By: Weihan Du

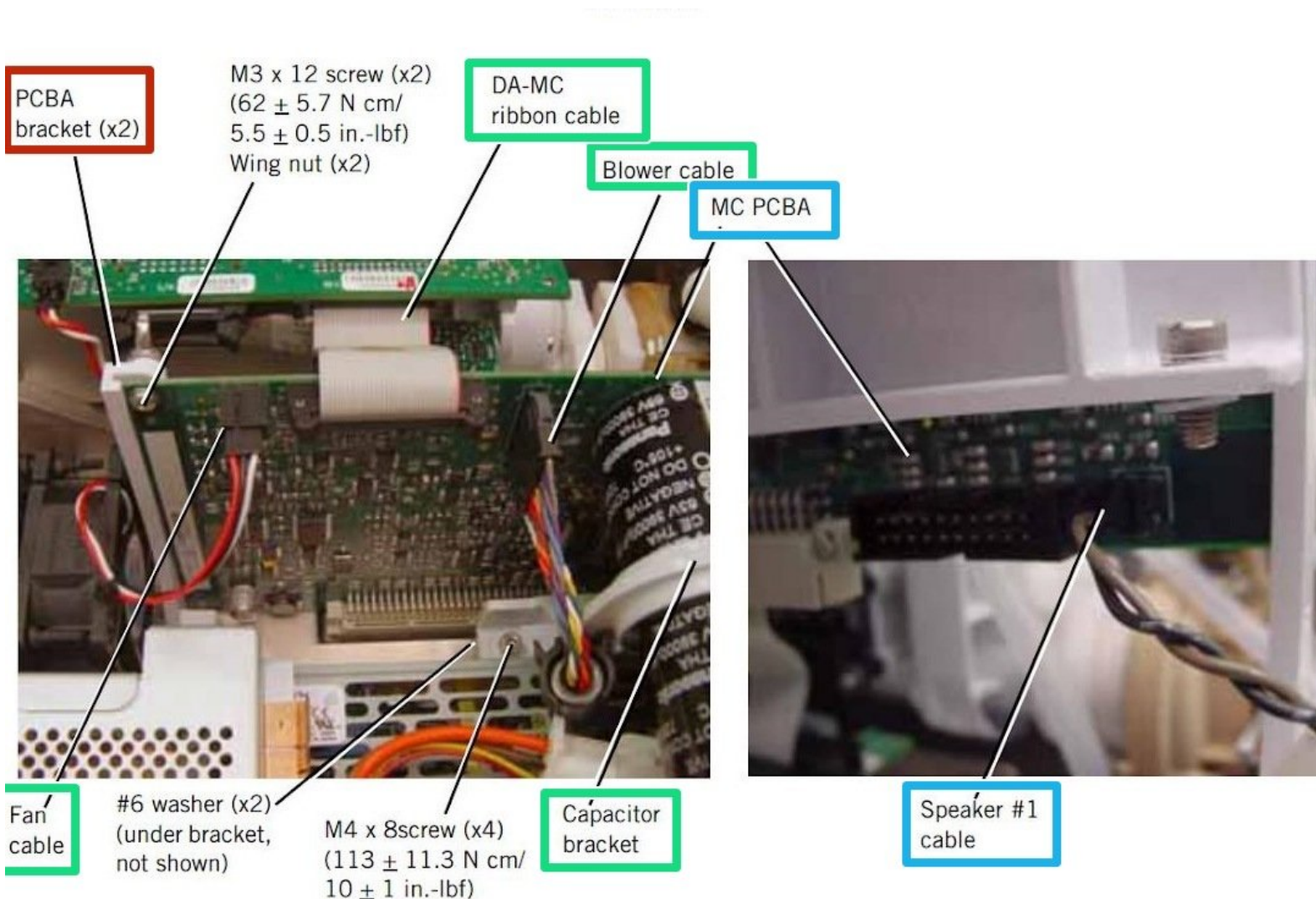


Figure 7-8: Removing the MC PCBA

INTRODUCTION

The alarm speakers are to sound and notify if an issue or emergency is to occur to the patient currently in use of the ventilator or if a problem occurs within the ventilator itself.

PLEASE NOTE: This repair guide was developed by the iFixit team based on Philips's own service manual. Neither iFixit nor this repair guide is endorsed by or affiliated with Philips

Replacing alarm speaker is discussed in:

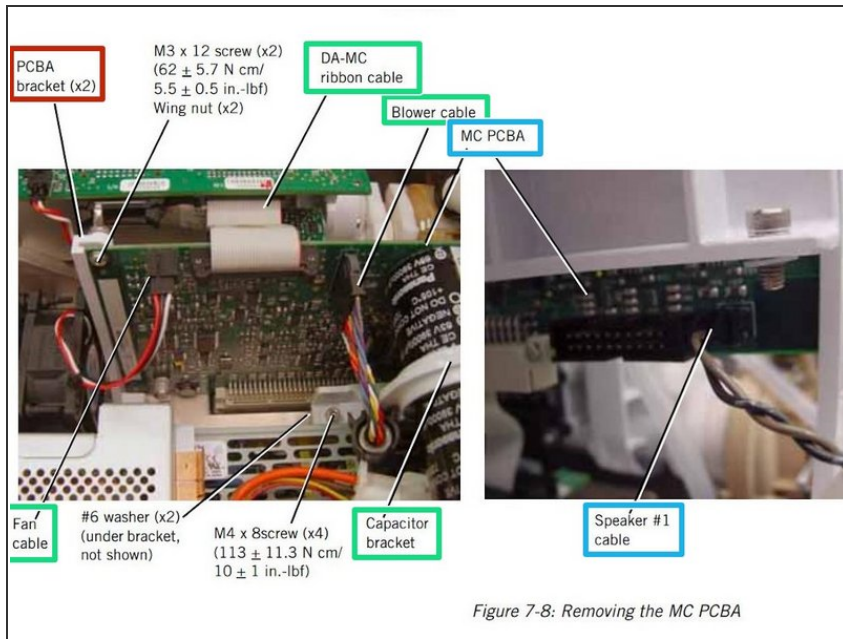
- chapter 7.14 “Component Removal/Installation - Speakers” of service manual
- chapter 7.10 “Component Removal/Installation - Front Panel” of service manual
- chapter 7.9 “Component Removal/Installation - Separating the UI from the Base” of service manual
- chapter 7.8 “Component Removal/Installation - Motor Controller (MC) PCBA” of service manual
- chapter 7.4 “Component Removal/Installation - Top Cover” of service manual



TOOLS:

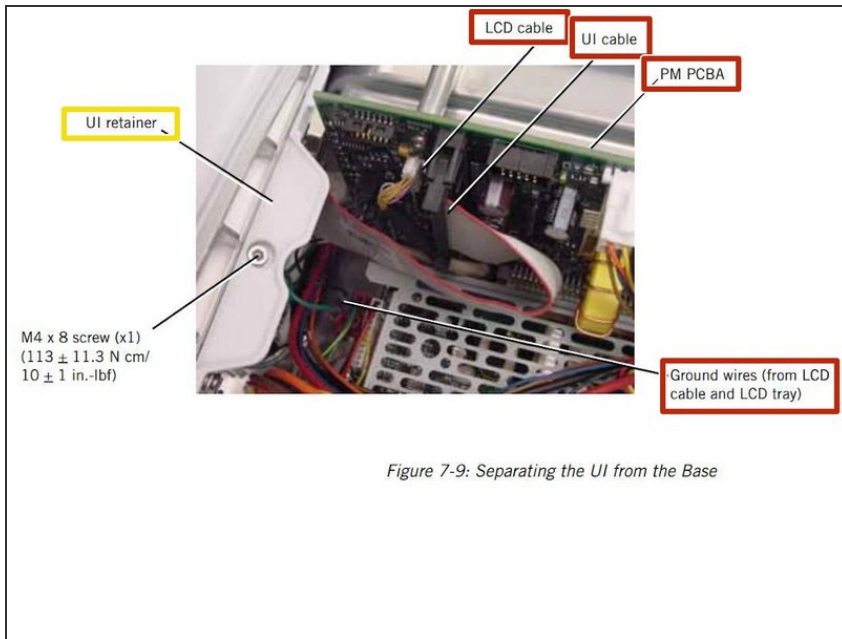
- [Phillips #0 Screwdriver](#) (1)
-

Step 1 — Alarm Speaker



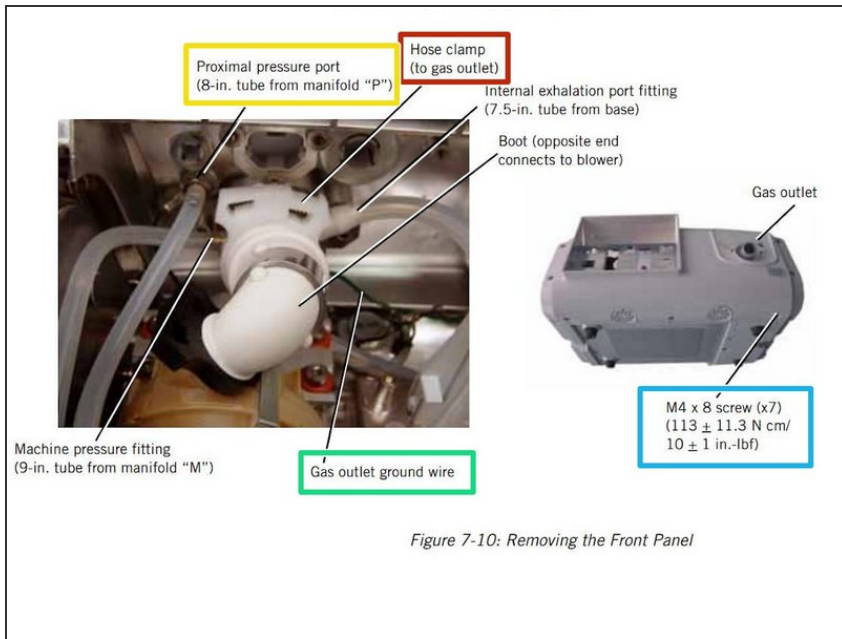
- **step 1** Remove MC PCBA
- Remove top cover ([top cover guide here](#))
- Remove the screws and wing nuts that attach the MC PCBA to the PCBA brackets.
- Loosen the captive screws that attach the capacitor bracket to the base.
- Disconnect cables: • Blower cable • Fan cable • DA-MC ribbon cable
- Gently pull MC PCBA up from its connection on the CPU PCBA, then disconnect speaker #1 cable.
- Remove PCBA brackets. To reinstall, follow the steps above in reverse order

Step 2



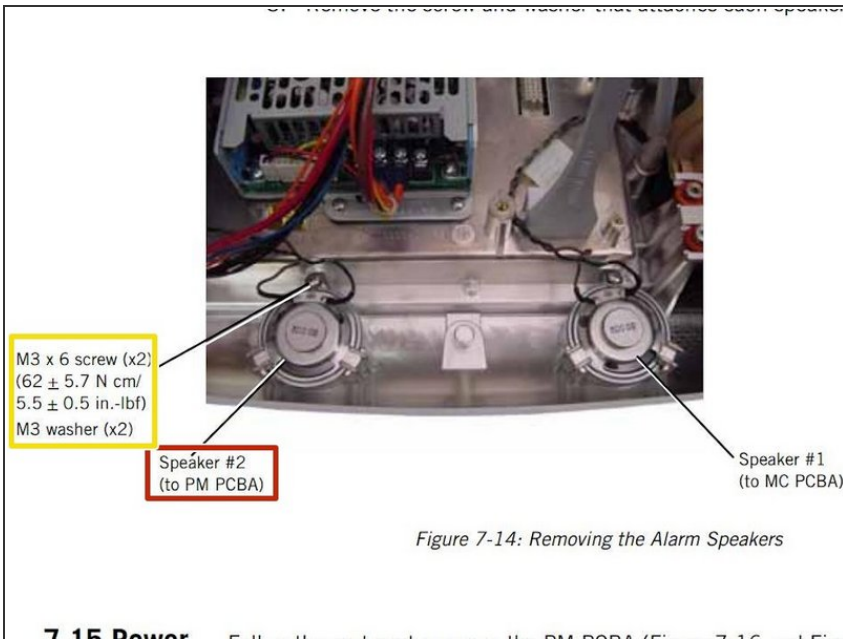
- **step 2** separate the UI from the base
- Remove MC PCBA (step 1)
- Disconnect cables: • LCD cable from PM PCBA. • LCD cable ground wires from the ground terminal. • LCD tray ground wires from the ground terminal. • UI cable (ribbon cable) from the PM PCBA.
- Loosen the captive screw that attaches the UI retainer to the UI.
- Slide retainer up, then remove UI from base.

Step 3



- **step 3** remove the front panel
 - Separate UI from base (step 2)
 - Remove hose clamp and boot that attach blower to the gas outlet.
 - Remove the tubing from the barbed fittings inside the front panel.
 - Disconnect gas outlet and proximal port ground wires from the base.
 - Remove the screws that attach the front panel to the base and side walls.
- NOTE:** When reinstalling tubing, ensure that:
- Longer (9-in.) tube is connected between manifold barb “M” (machine) to barbed gas outlet fitting.
 - Shorter (8-in.) tube is connected between manifold barb “P” (proximal) and barbed proximal pressure port.

Step 4



- **step 4** remove the alarm speakers
- Remove front panel (step 3)
- Disconnect speaker #2 from the power management (PM) PCBA. (Speaker #1 is disconnected when the MC PCBA is disconnected.)
- Remove the screw and washer that attaches each speaker to the base.
- Insert new speaker in place of old one
- Follow **step 4** in reverse order to install speaker.

Step 5



- **step 5** reinstalling
- Follow **step 3** in reverse order to reinstall the front panel.
- Follow **step 2** in reverse order to reinstall the UI to the base.
- Follow **step 1** in reverse order to reinstall the MC PCBA.
- Follow the [Top Cover Guide](#) in reverse order to reinstall.

To reassemble your device, follow these instructions in reverse order.