



# Kobo Glo HD Motherboard Replacement

Replace the mainboard in your Kobo Glo HD.

Written By: Kevin Bhasi



## INTRODUCTION

This guide shows how to remove/replace the mainboard on a Kobo Glo HD.

*This guide applies to the Kobo Glo HD (model N437), but may also apply to the Kobo Touch 2.0 (model N587).*

*This guide does **not** apply to the regular Kobo Glo and Touch models.*



### TOOLS:

- [iFixit Opening Picks set of 6](#) (1)
  - [Spudger](#) (1)
  - [ESD Safe Tweezers Blunt Nose](#) (1)
  - [Phillips #00 Screwdriver](#) (1)
-

## Step 1 — Rear Cover



- If you haven't done so already, power off your eReader by holding down the power button for 3 seconds until the display refreshes to indicate that it has powered off.

⚠ Opening picks are required for this step as opening tools can be too wide to get into the gap between the rear cover and the side/front.

- Start by inserting the pick into the area around the power button or Micro USB port.
  - ☑ Don't insert it too far, as that could result in damage to the power button, status indicator, and/or Micro USB port.
- Then, slide the pick around to undo these clips.

## Step 2



- The rear cover should then pop off.

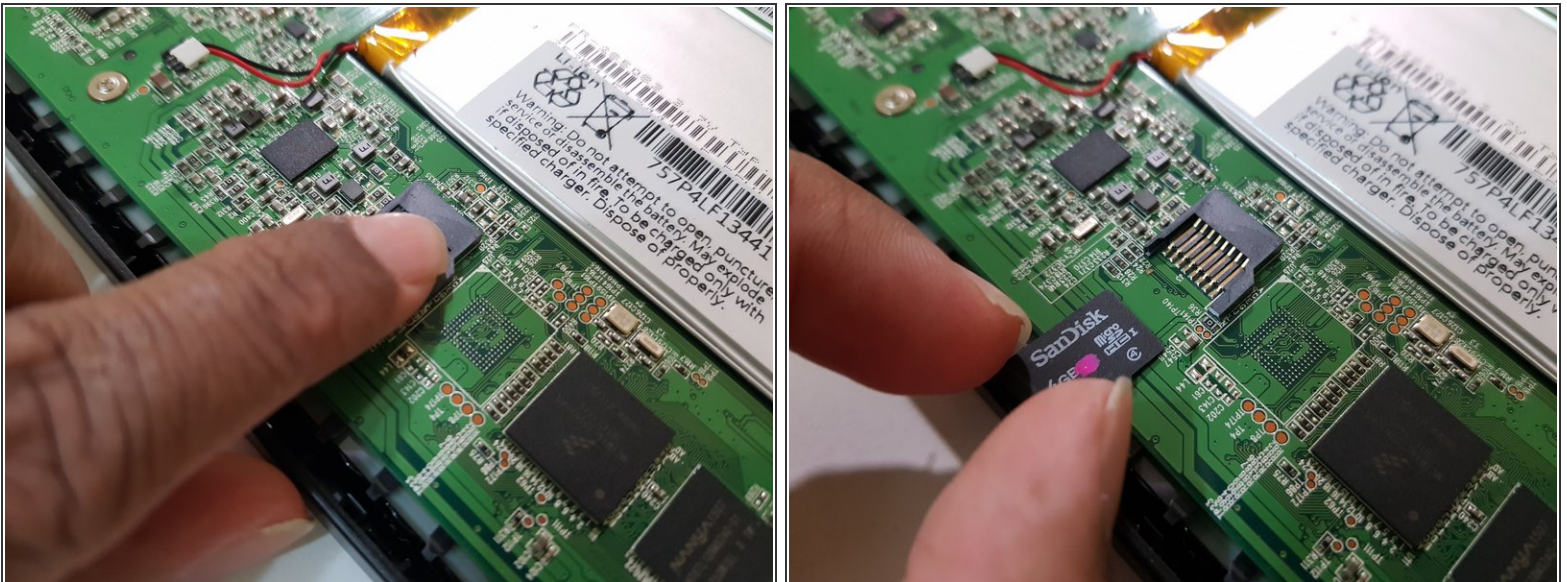


### Step 3 — Mainboard - Disconnect the battery



- Using the pointed end of your spudger, while holding your eReader using your other hand or a weight, disconnect the battery.

### Step 4 — Remove the internal memory card

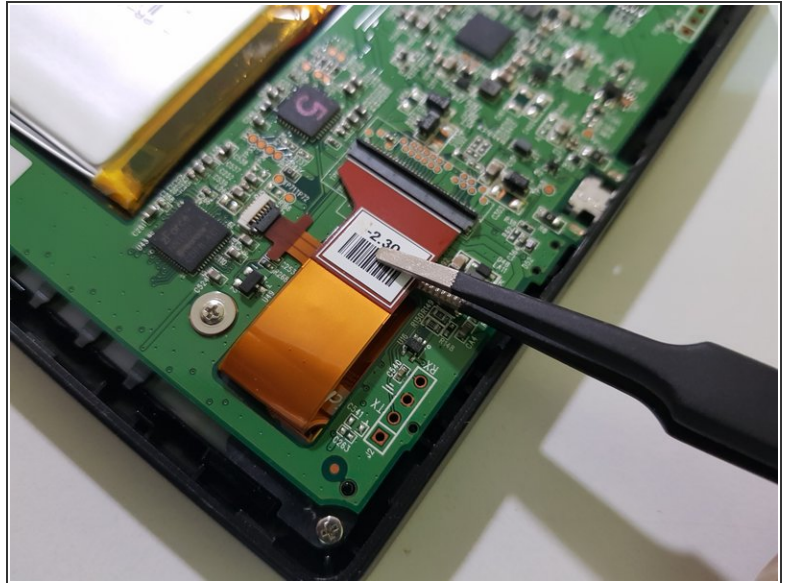


- If your eReader has a memory card instead of a storage chip, remove the memory card.

**⚠ Don't lose, misplace, or damage this memory card**, as it not only contains any books and any other data you downloaded or copied over, but it also contains the firmware, as well as the serial number and important files required for your eReader to be able to start up.

- **Image needed in position 1: innards after disconnecting the battery**

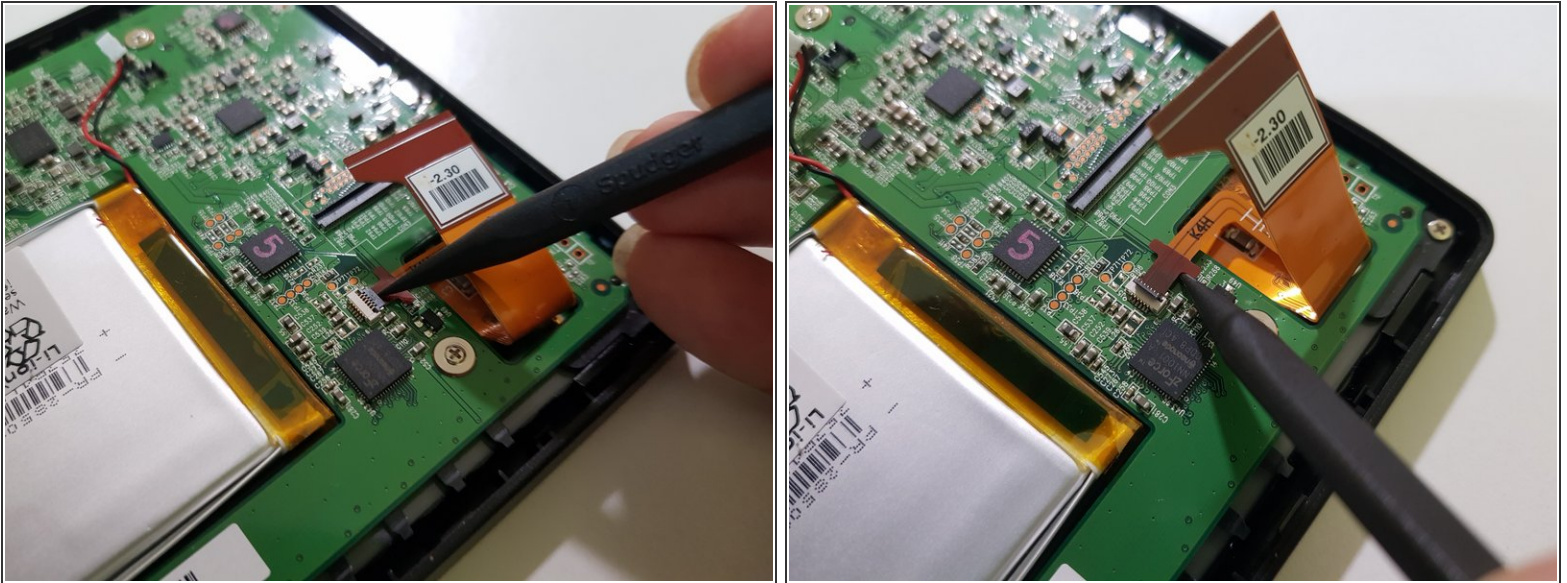
## Step 5 — Disconnect the display



- Using the flat end of your spudger and a pair of flat-bladed tweezers, disconnect the display.
- **Image needed: innards after disconnecting the battery and removing the start-up memory card**



## Step 6 — Disconnect the frontlight



- Using the pointed end of your spudger, disconnect the frontlight.
- **Image needed: innards after disconnecting the battery, removing the start-up memory card, and disconnecting the display**

## Step 7 — Remove the mainboard



- Using your screwdriver with a PH00 tip, remove these screws and set them aside.

## Step 8



- Use the flat end of your spudger to lift the top of the mainboard, and your fingers to slowly pull out the bottom.
- **Image needed: me pulling out the mainboard**

## Step 9



- The mainboard has been removed.

To reassemble your device, follow these instructions in reverse order.