



Dell Latitude E5450-5450 Wifi Card Replacement

Replace defective wifi card or upgrade a single band to a dual band wifi card

Written By: Jeannie Crowley





TOOLS:

- [Phillips #1 Screwdriver](#) (1)
- [Tweezers](#) (1)
- [Spudger](#) (1)



PARTS:

- [Wifi Card](#) (1)

Step 1 — Wifi Card



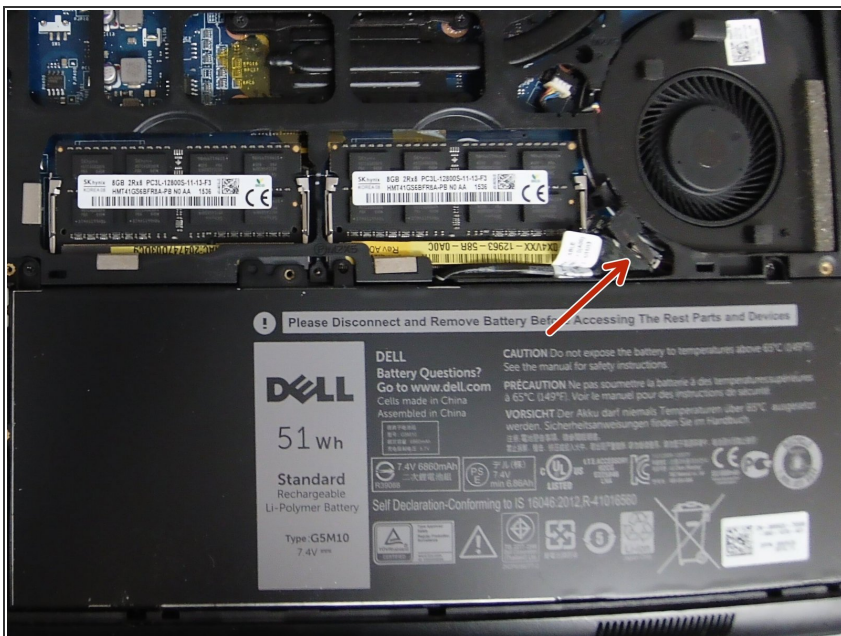
- Remove the 6 screws using a Philips #1 (PH1) screwdriver.

Step 2



- Using your fingers or a pry tool, gently lift the cover from the device. If the device has been opened before, it should open easily from the top corner using your finger.
- If it is a tight fit, a spudger can be used to gently pry open the cover. Place the spudger at the top corner to pry open.

Step 3



- Disconnect the battery before proceeding to reduce the risk of shock or damage.
- Gently pull the tab attached to the battery to disconnect it.

Step 4



- If the wires are not clearly labeled as 1 and 2, take note of how the wires are connected to know which is 1 and 2. The WiFi card should have a tiny 1 and 2 on the card itself for guidance.

Step 5



- Use a Philips #1 (PH1) screwdriver to remove the screw holding the WiFi card in place.

Step 6



- Gently disconnect the antennas and slide the WiFi card from the slot

Step 7



- Slide new WiFi card into the slot and reassemble the device by completing steps 1-6 in reverse order.
- You might need to use tweezers to hold the cables in place as you connect the antenna to the WiFi card. A spudger can be used to gently press the connectors into place.

To reassemble your device, follow these instructions in reverse order.