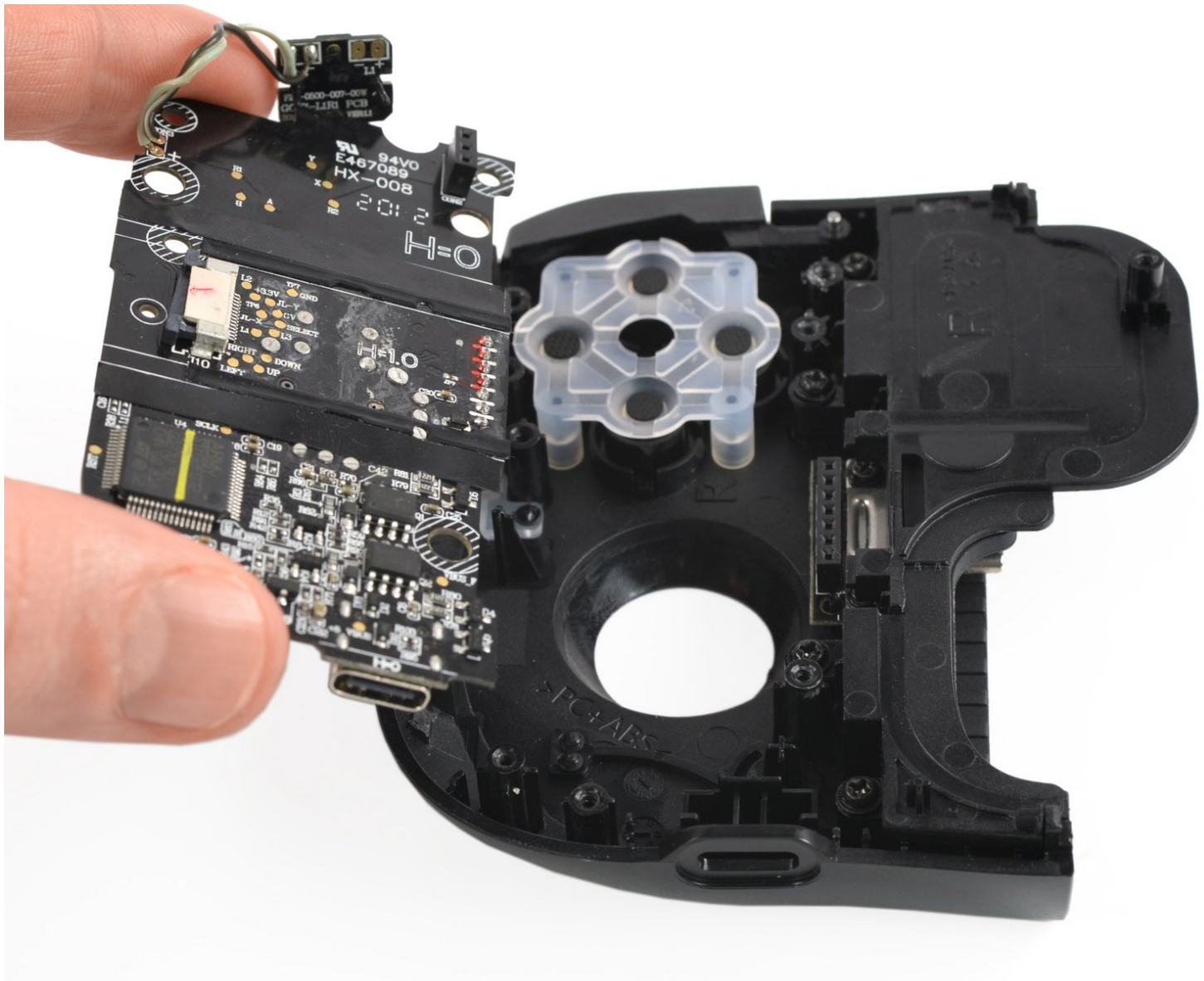




# Razer Kishi Mainboard Replacement

Use this guide to replace the mainboard which...

Written By: Adriana Zwink



# INTRODUCTION

Use this guide to replace the mainboard which is placed on the right controller side on your Razer Kishi.



## TOOLS:

- [Spudger](#) (1)
  - [Tri-point Y0 Screwdriver](#) (1)
  - [iFixit Opening Picks \(Set of 6\)](#) (1)
  - [Phillips #0 Screwdriver](#) (1)
  - [ESD Safe Tweezers Blunt Nose](#) (1)
-

## Step 1 — Remove the screws



**i** The opening process is the same on both sides. For simplicity, this guide shows only the right-side opening process. Unscrew whichever side you wish to open and work on.

- For the right side, remove the five Y0 screws securing the right side of the controller.
  - Four 9.2 mm screws
  - One 7.2 mm screw
- If you wish to open the left side, remove the five Y0 screws securing the left side of the controller.
  - Four 9.2 mm screws
  - One 7.2 mm screw

## Step 2 — Release the bottom edge clips



**i** Both cases are held together by plastic clips.

- Insert an opening pick in the seam between the top and bottom case, at the bottom left corner of the controller.
- With the pick still in the seam, slide it along the bottom edge to the bottom right corner to loosen the plastic clips.

## Step 3 — Release the side edge clips



- Slide the opening pick along the right edge to loosen the plastic clips.



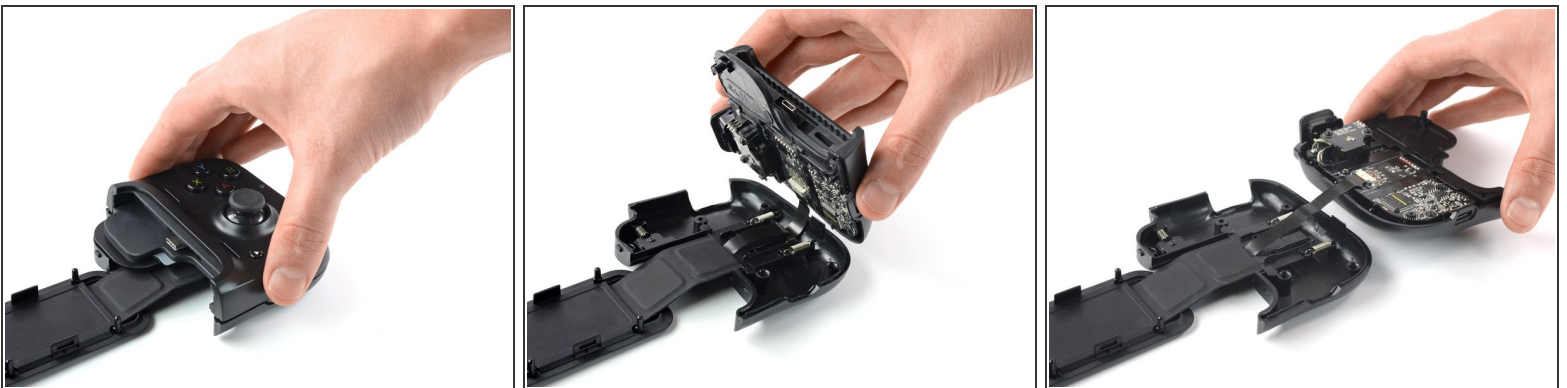
## Step 4 — Release the top edge clips



- Slide the opening pick along the top edge to loosen the remaining plastic clips.

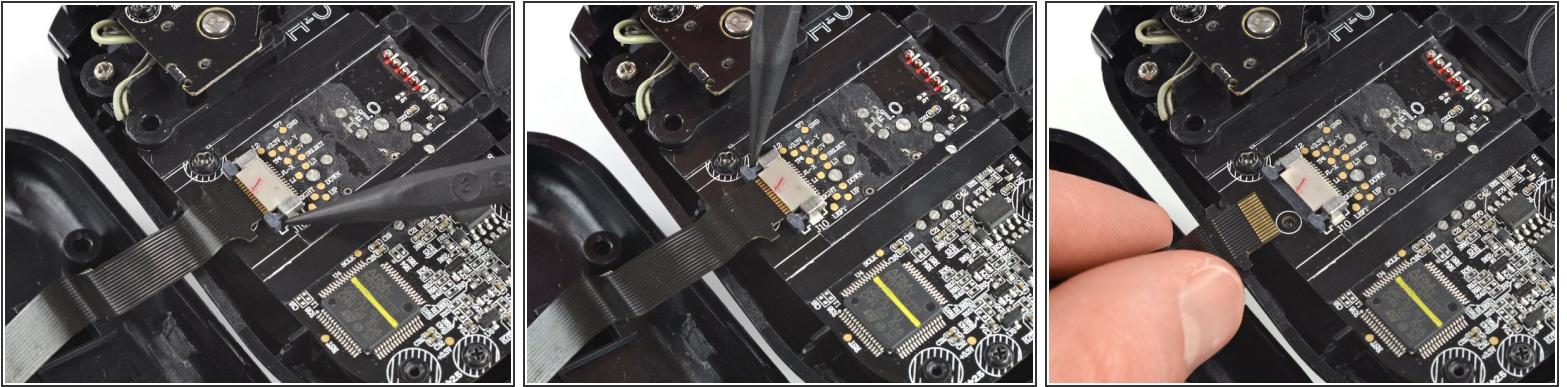
⚠ Don't try to remove the top side yet, the case is still connected to the board.

## Step 5



- Carefully lift the top side and unfold it to the right, like a book.

## Step 6 — Disconnect the interconnect cable



- Using the pointed end of a spudger, push the grey tabs on the interconnect socket away from the socket, parallel to the interconnect cable, to release the cable.
- Pull the cable out of the socket.

## Step 7 — Remove the screws



- Use a Phillips #0 screwdriver to remove the two 4.4 mm-long screws securing the trigger board.

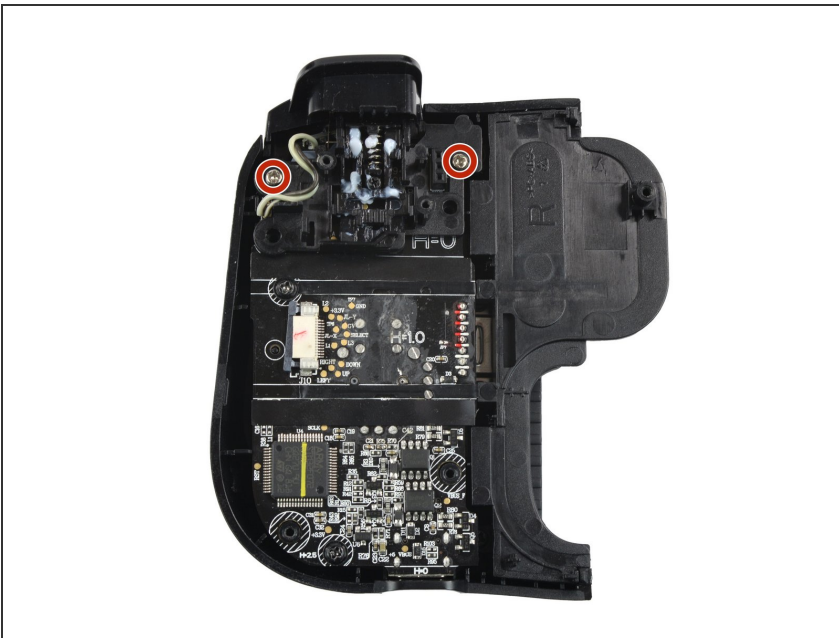
## Step 8 — Remove the breakout board



**⚠** The breakout board is plugged in. When removing breakout board, it is important to pull it straight out to avoid bending the connectors.

- Remove the breakout board by lifting it straight up, away from the controller.

## Step 9 — Remove the screws



- Use a Phillips #0 screwdriver to remove the two 7.0 mm-long screws securing the trigger.

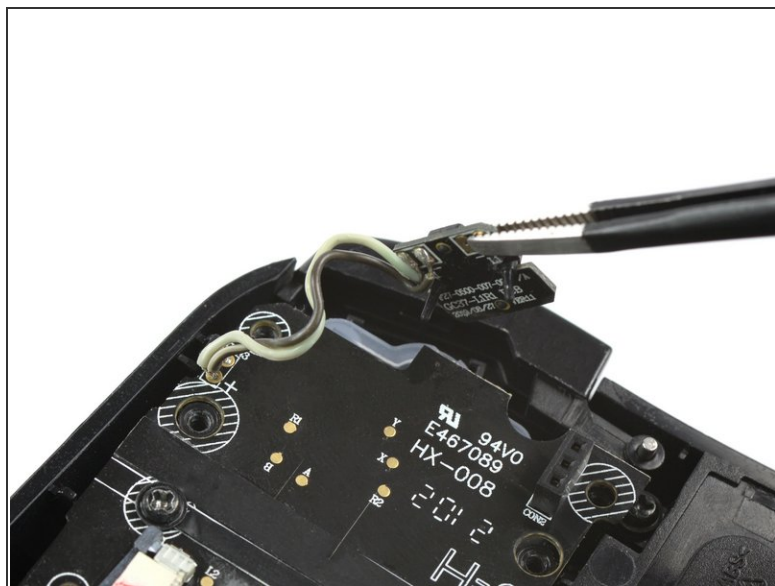
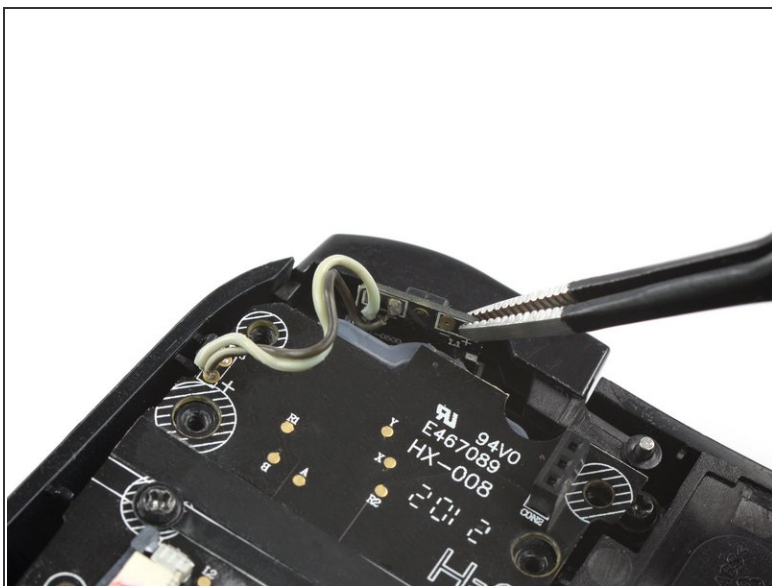


## Step 10 — Remove the trigger



- Remove the shoulder trigger.

## Step 11 — Lift the shoulder button board



- Use a pair of blunt nose tweezers to lift out the shoulder button board.

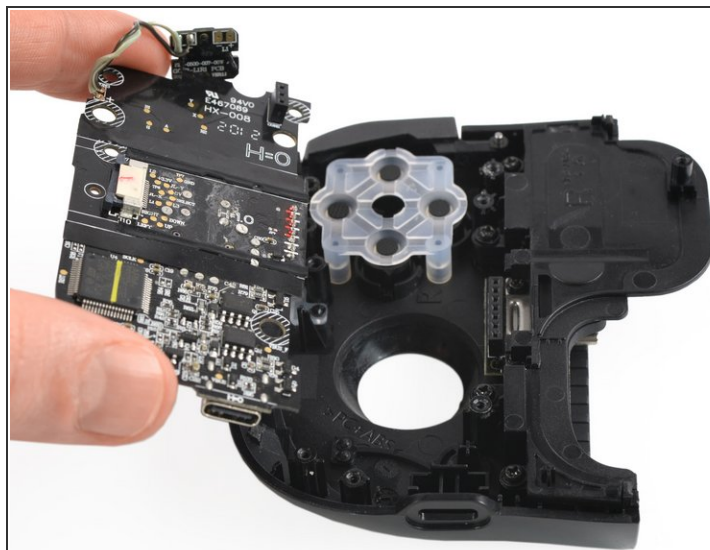


## Step 12 — Remove the screws



- Use a Phillips #0 screwdriver to remove the two 5.9 mm-long screws.

## Step 13 — Remove the board



- Pull the mainboard straight out of the frame to remove it.

To reassemble your device, follow these instructions in reverse order.

Take your e-waste to an [R2 or e-Stewards certified recycler](#).

Repair didn't go as planned? Try some [basic troubleshooting](#), or ask our [Answers community](#) for help.