



# DualShock 4 CHU-ZCT2U Front Panel Replacement

Follow this guide to replace the front panel on...

Written By: Sam Omiotek



# INTRODUCTION

Follow this guide to replace the front panel on a Sony Dualshock 4 CHU-ZCT2U PlayStation controller.

## TOOLS:

[iFixit Opening Tool](#) (1)  
[Phillips #00 Screwdriver](#) (1)  
[Tweezers](#) (1)

## PARTS:

[DualShock 4 Controller Front Panel \(CUH-ZCT2U\)](#) (1)

## Step 1 — Remove the rear panel screws



- Use a Phillips screwdriver to remove the four 6.4 mm-long screws from the rear panel.

## Step 2 — Separate the rear panel



- ❶ Four fragile plastic clips hold the panels together. You can see their locations more clearly in [this guide](#).
- ❶ The clips help hold the seams together. If you break these clips, the controller will still work.
- Insert an opening tool into the crease where the front and rear panel meet, starting from the outside edge of either handle.
- Gently pry the rear panel off of the front panel until they become partially separated.

## Step 3 — Release the plastic clips



- Use the opening tool to separate the panels by releasing the plastic clips around the perimeter of the controller.

## Step 4 — Remove the rear panel



- Lift the rear panel directly away from the controller.

⚠ Do not completely remove the rear panel. It is still attached to the controller by a ribbon cable.

## Step 5



- Use your fingers to gently pull the ribbon cable straight out of its connector on the motherboard.
  - ① Since this cable's pull tab is too small to grab with fingers or [tweezers](#), grab the cable itself. Otherwise utilize pull tabs whenever possible.
- ☑ During reassembly, grab the ribbon cable by the blue tab and gently press the cable straight into the connector. Push the blue tab rather than the ribbon cable itself.

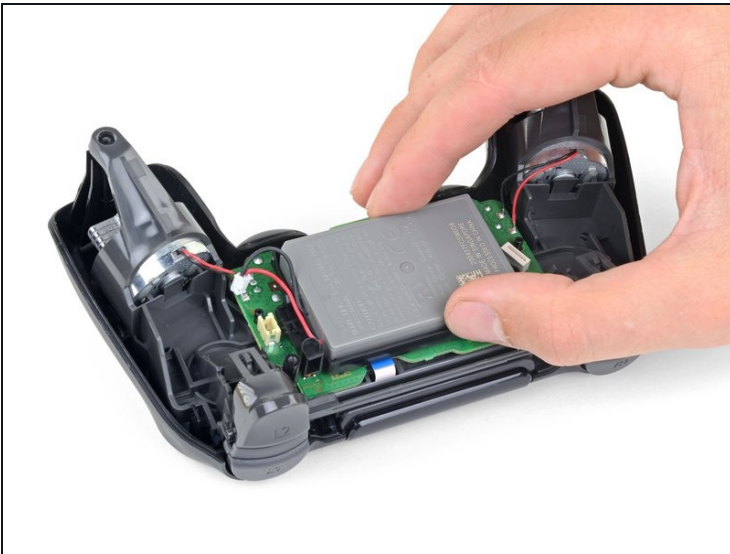


## Step 6 — Remove the battery



- Use a pair of [tweezers](#) to pull the battery's power connector straight up from the motherboard.

## Step 7



- Remove the battery.

## Step 8 — Remove the motherboard



- Use a Phillips screwdriver to remove the 6.4 mm-long screw securing the battery bracket.

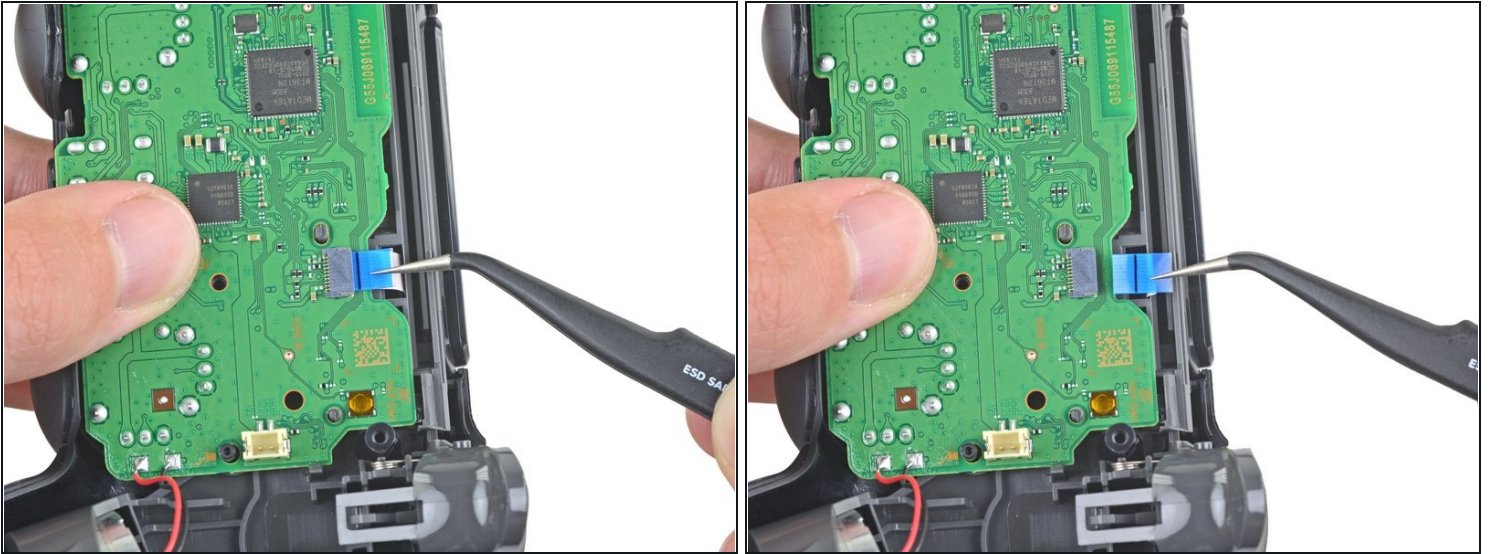
## Step 9



- Remove the battery bracket.



## Step 10



- Use a pair of [tweezers](#) to disconnect the touch panel ribbon cable.
  - ❶ Pull the ribbon cable directly away from its connector on the motherboard by the blue pull tab, not by the cable itself.

## Step 11



- Separate the motherboard and midframe assembly from the front panel.



## Step 12 — Remove the touchpad



- Push the bottom of the touchpad in from the front side of the controller to separate it from the front case.
- Remove the touchpad from the bezel holding it to the front case.

## Step 13 — Remove the buttons



- Use your fingers or a pair of [tweezers](#) to remove the three silicone conductive rubber pads from the controller buttons.

## Step 14



- Slowly turn over the front panel to let the buttons fall out.
  - Only the front panel remains.
- ☒ The round buttons have unique notches designed to prevent them from being installed incorrectly.

## Step 15 — Reassembly tip



- ☑ During reassembly, use your fingers or a pair of tweezers to drop the buttons into their respective holes on the front panel.
  - Align the button notches to ensure each one is fully inserted and in the correct location.

**To reassemble your device, follow the above steps in reverse order.**

Repair didn't go as planned? Check out our [Answers community](#) for troubleshooting help.