

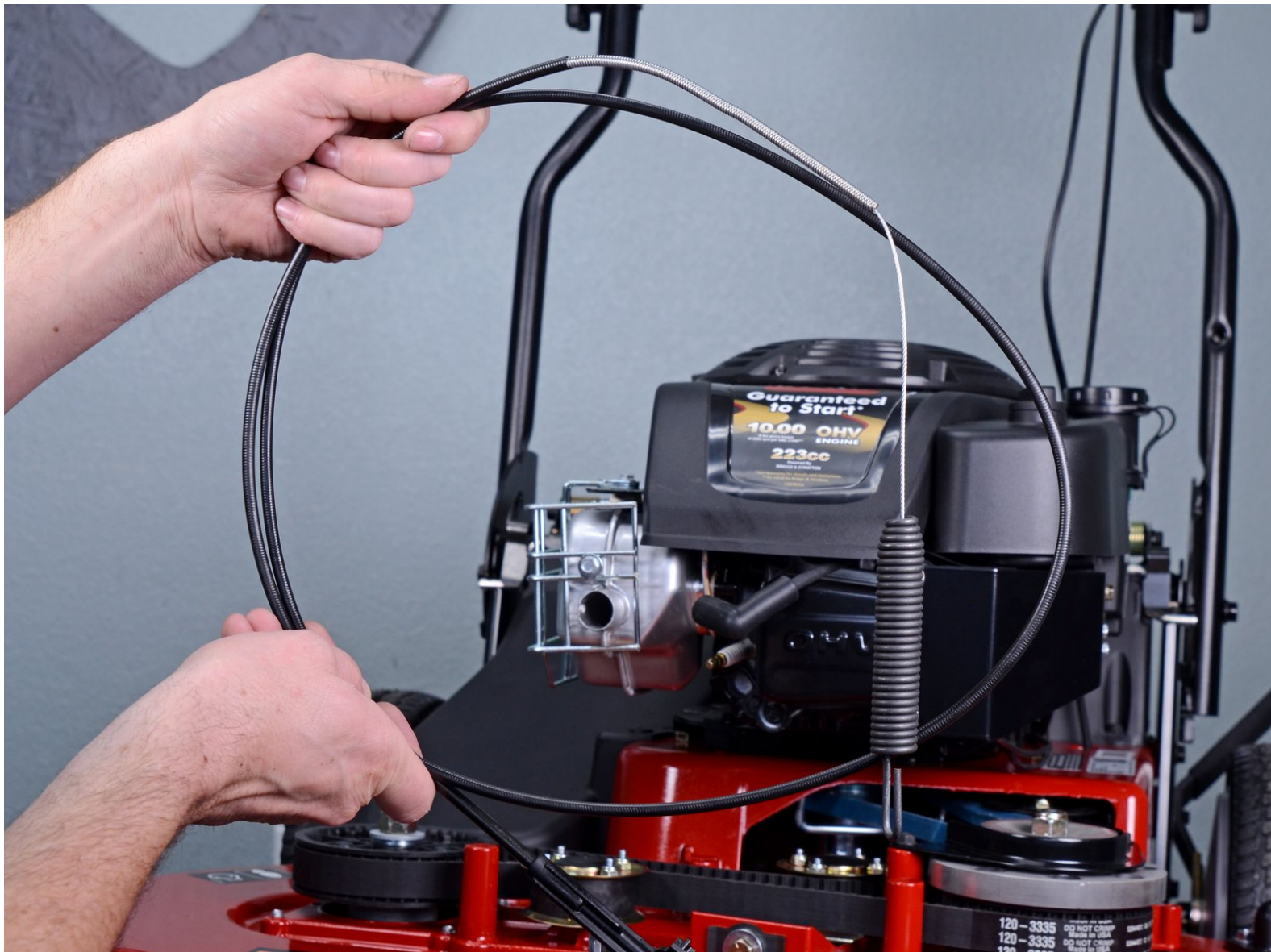


Toro Walk Behind Mowers 21199HD 2018

Brake Cable Replacement

Guide to remove and replace the brake cable on the Toro Walk Behind Mower 21199HD 2018.

Written By: Carsten Frauenheim



INTRODUCTION

This guide shows how to remove and replace the brake cable on the Toro Walk Behind Mower 21199HD 2018.



TOOLS:

- [Wheel Chocks](#) (2)
- [Flashlight](#) (1)
- [Wood Block](#) (1)
- [7/16" Socket](#) (1)
- [3/8" Drive Ratchet](#) (1)
- [3/8-Inch Drive Extension Bar](#) (1)
- [Flathead Screwdriver](#) (1)
- [3/8" Socket](#) (1)
- [Flush Wire Cutters](#) (1)




PARTS:

- [Toro Cable-Brake 133-1998](#) (1)
- [Zip Ties](#) (1)

Step 1 — Disconnect the spark plug wire




 Before you begin, ensure that the mower is powered down and cool to the touch.

- Grab the plastic housing at the end of the spark plug wire and pull firmly to disconnect it.

Step 2 — Chock the rear wheels



- Chock the rear wheels to prevent the mower from rolling during service.
-  If the blades are extremely dirty, you can clean them using the washout fitting so the bolts on the underside of the blade guard are accessible.

Step 3 — Lift up the deflector



- Lift up the plastic deflector.

Step 4 — Remove the grass bag



- While holding the deflector up and out of the way, lift the grass bag handle away from the mower to detach it.
- Remove the grass bag.

Step 5 — Cut the zip tie



- Cut and remove the zip tie holding the cables together near the base of the handle.
 - ☑ During reassembly, replace this zip tie.

Step 6 — Remove the cable guides



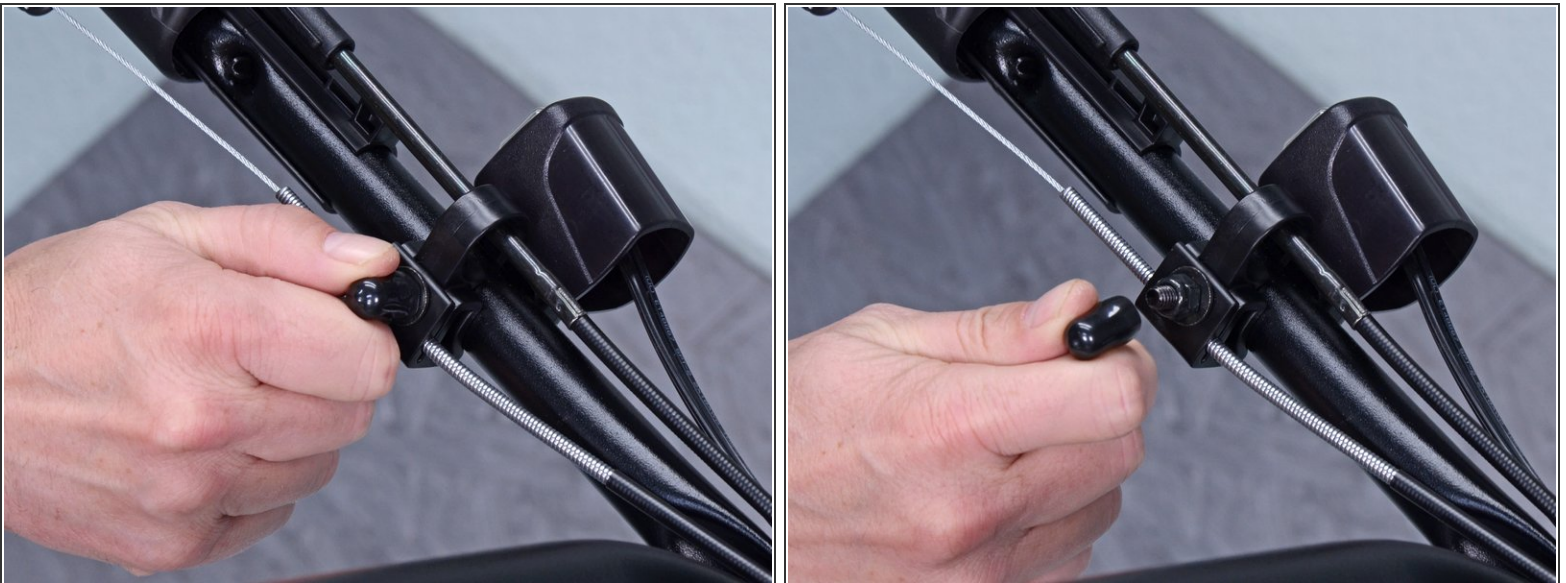
- Use your fingers and press up from the bottom to remove the plastic cable guide from the handle.

Step 7



- Spread the cable guide apart and remove it from the cables.

Step 8



- Remove the black silicone cap covering the nut on the kill switch and upper cable guide assembly.

Step 9



- Use a 7/16 inch socket or wrench to remove the nut securing the kill switch and upper cable guide assembly.

Step 10



- Unclip and remove the upper cable guide from the handle.
- Unroute the cables from the cable guide.

Step 11 — Detach the retainer arm



- Rotate the cable retainer arm 90° upwards, perpendicular to the handle, to unlock it.
- Pull the arm away from the handle to remove it.

Step 12 — Remove the cable from the brake handle



- Use a flathead screwdriver to pry off the single-use cap locking the brake cable to the brake handle.
- ☒ During reassembly, replace this single-use cap.

Step 13



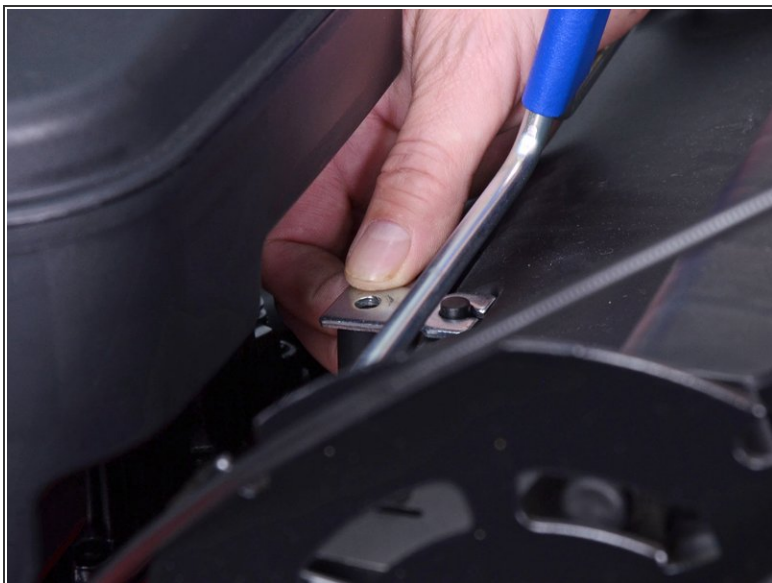
- Remove the brake cable from the brake handle.

Step 14 — Remove the guide plates



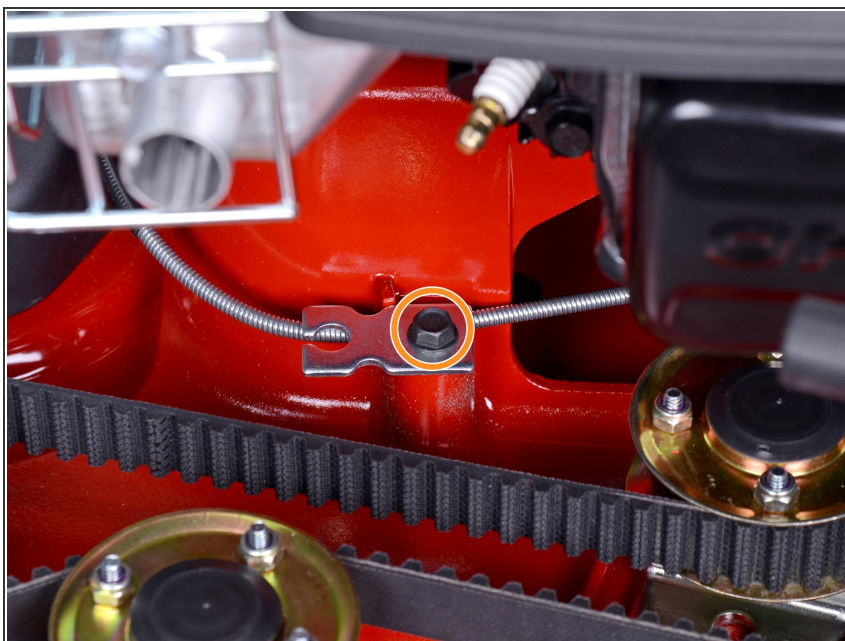
- Use a 3/8 inch socket to remove the cable guide plate screw.

Step 15



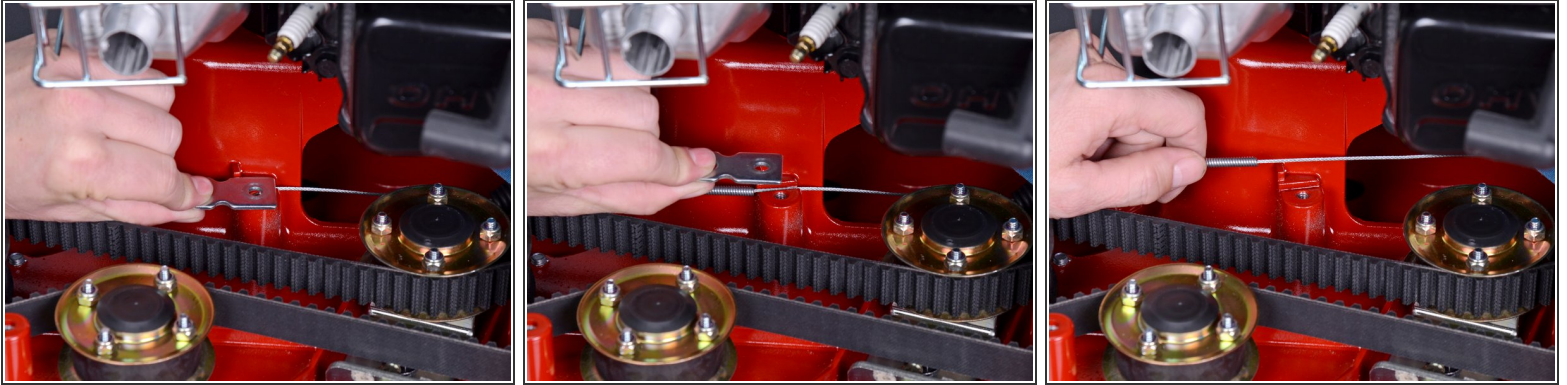
- Remove the cable guide plate.

Step 16



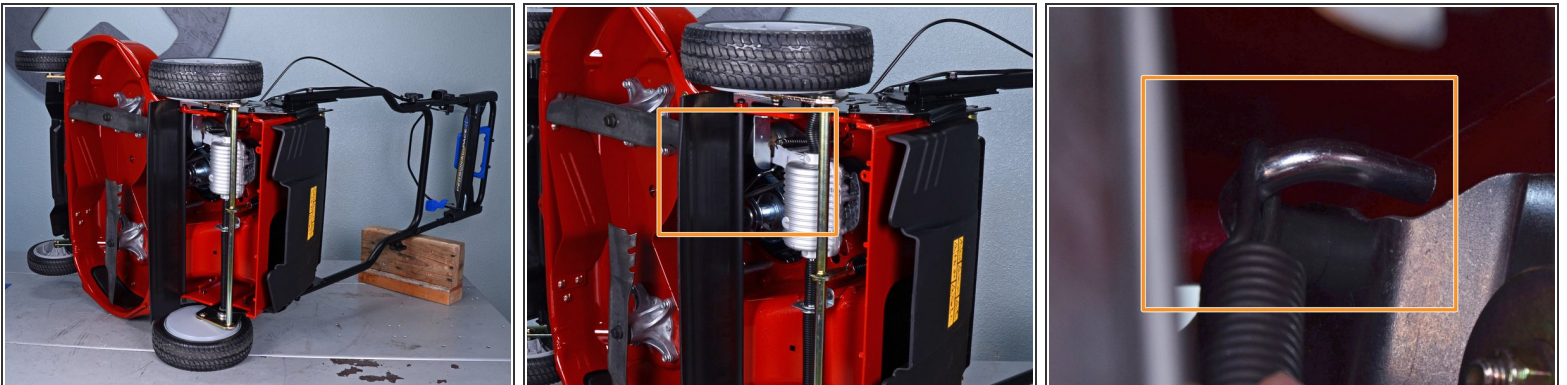
- Use a 3/8 inch socket to remove the cable guide plate screw.

Step 17



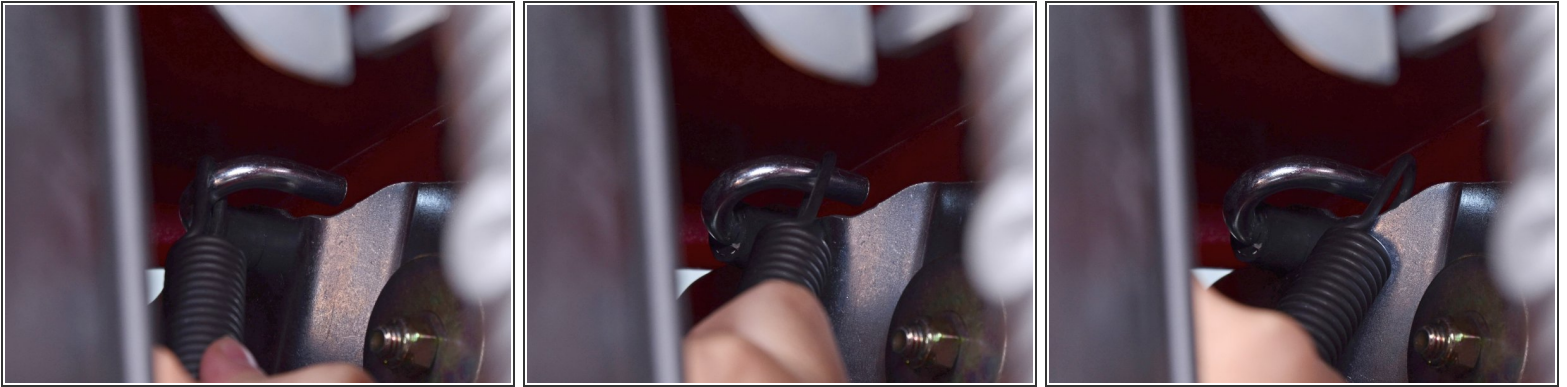
- Remove the cable guide plate.
- Lift the cable out of the groove in the frame.

Step 18 — Find the end of the brake cable



- Tilt the mower onto its side, propping the handle up with a block of wood.
- Locate the end of the brake cable underneath the mower, in front of the driveline, and above the blade guard.
 - ⓘ The end of the brake cable is attached to a spring, and they come out as one unit.
 - ⓘ The spring is hooked to a shiny U-shaped post.

Step 19 — Remove the brake cable



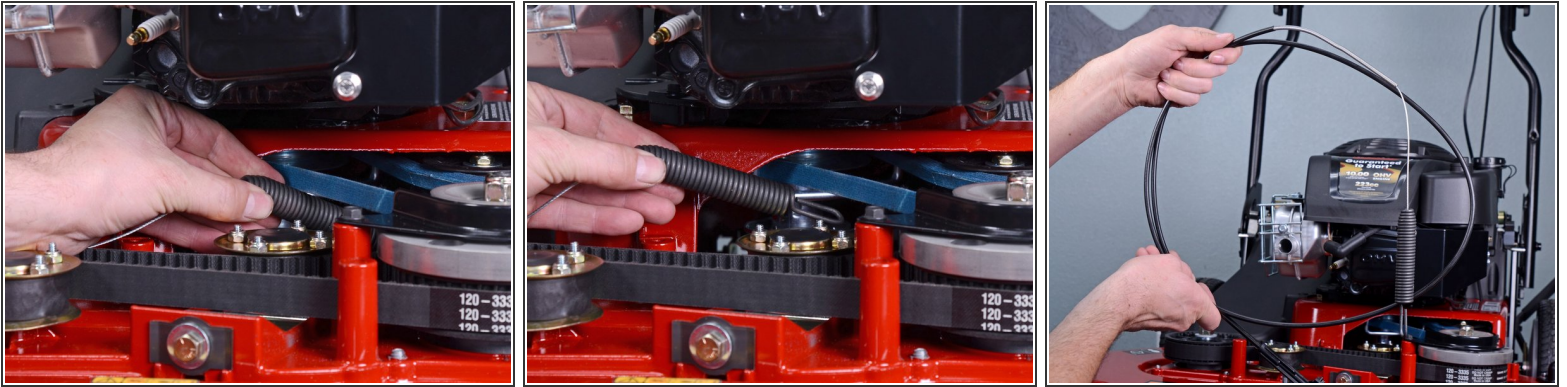
- Reach into the underside of the mower and grab the spring at the end of the brake cable.
- Slide the spring towards the open end of the U-shaped post.
- ⓘ This can be a difficult area to see and reach. Use a flashlight if need be.

Step 20



- Remove the spring from the U-shaped post.
- ⓘ Once unhooked, you can flip the mower back onto its wheels.

Step 21



- Remove the brake cable assembly.
- ☑ During reassembly, ensure the cable has adequate slack and operates as expected before tightening the bolts on the cable guides.

To reassemble your device, follow these instructions in reverse order.