



iPhone 12 mini Battery Replacement

iPhone batteries are rated to hold 80% of their...

Written By: Dominik Schnabelrauch



INTRODUCTION

iPhone batteries are rated to hold 80% of their capacity for up to 500 charge cycles, which lasts roughly 18-24 months for most users. After that, your iPhone may need to be charged far more frequently, and iOS may warn you that performance is affected (in other words, your phone will run slower). Use this guide to replace your battery and restore your iPhone to like-new performance.

If your battery is swollen, [take appropriate precautions](#).

Note: After the repair, your iPhone may display a warning about the “genuineness” of the battery, even when using original Apple parts. If your iPhone functions normally, you can safely ignore the warning.

You'll need replacement adhesive to reattach components when reassembling the device.



TOOLS:

[Phillips #000 Screwdriver](#) (1)
[Anti-Clamp](#) (1)
[Hair Dryer](#) (1)
[Heat Gun](#) (1)
[Suction Handle](#) (1)
[P2 Pentalobe Screwdriver iPhone](#) (1)
[iOpener](#) (1)
[iFixit Opening Picks \(Set of 6\)](#) (1)
[Tweezers](#) (1)
[Spudger](#) (1)
[Tri-point Y000 Screwdriver](#) (1)



PARTS:

[iPhone 12 mini Battery](#) (1)
[iPhone 12 mini Battery Adhesive Strips](#) (1)

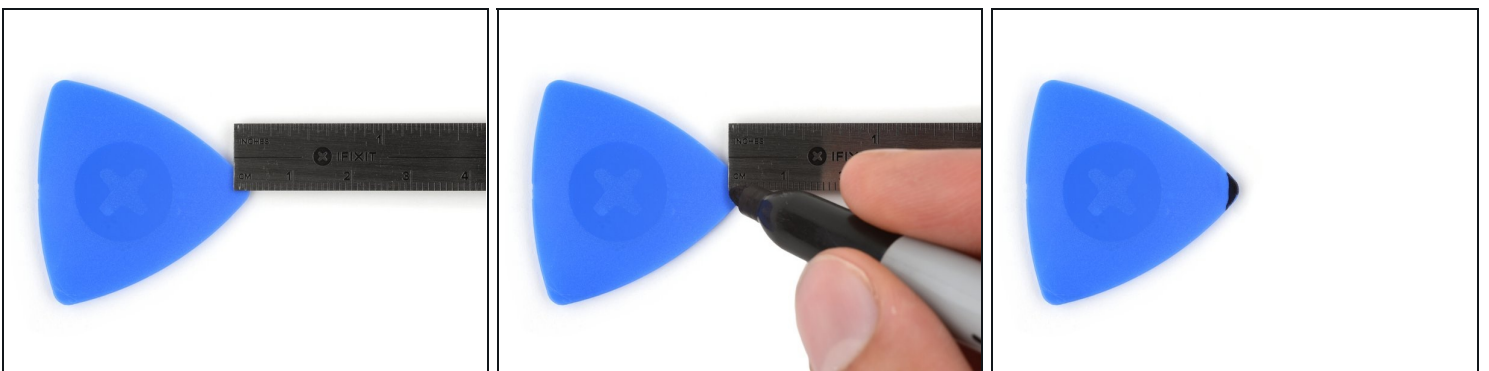
Step 1 — Remove the pentalobe screws



⚠ Before you begin, discharge your iPhone battery below 25%. A charged lithium-ion battery can catch fire and/or explode if accidentally punctured.

- Power off your iPhone before beginning disassembly.
- Remove the two 6.7 mm-long pentalobe screws at the bottom edge of the iPhone.

Step 2 — Mark your opening picks



ⓘ If inserted too far, an opening pick can damage your device. Follow this step to mark your pick and prevent damage.

- Measure 3 mm from the tip and mark the opening pick with a permanent marker.
 - ⓘ** You can also mark the other corners of the pick with different measurements.
 - ⓘ** Alternatively, [tape a coin to a pick](#) 3 mm from the tip.

Step 3 — Tape over any cracks



- ① If your iPhone has a cracked screen, keep further breakage contained and prevent bodily harm during your repair by taping over the glass.
- Lay overlapping strips of clear packing tape over the iPhone's screen until the whole face is covered.
- ⚠ Wear safety glasses to protect your eyes from any glass shaken free during the repair.
- If you can't get the suction cup to stick in the next few steps, fold a strong piece of tape (such as duct tape) into a handle and lift the screen with that instead.
- ① If all else fails, you can superglue the suction cup to the screen.

Step 4 — Anti-Clamp instructions



- ① The next three steps demonstrate the [Anti-Clamp](#), a tool we designed to make the opening procedure easier. **If you aren't using the Anti-Clamp, skip down three steps for an alternate method.**
- ① For complete instructions on how to use the Anti-Clamp, [check out this guide](#).
- Pull the blue handle backwards to unlock the Anti-Clamp's arms.
- Slide the arms over either the left or right edge of your iPhone.
- Position the suction cups near the bottom edge of the iPhone—one on the front, and one on the back.
- Squeeze the cups together to apply suction to the desired area.
- ① If you find that the surface of your iPhone is too slippery for the Anti-Clamp to hold onto, you can [use tape](#) to create a grippier surface.

Step 5



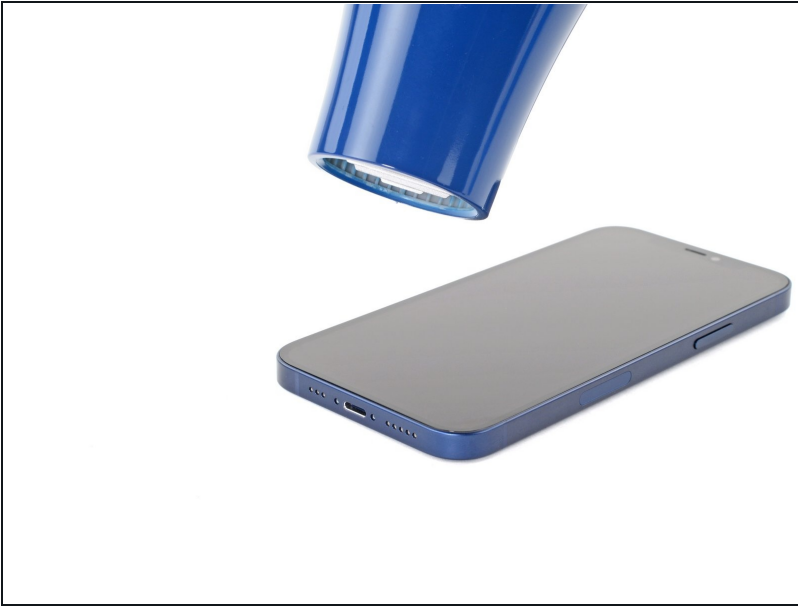
- Pull the blue handle forwards to lock the arms.
- Turn the handle clockwise 360 degrees or until the cups start to stretch.
- Make sure the suction cups remain aligned with each other. If they begin to slip out of alignment, loosen the suction cups slightly and realign the arms.

Step 6



- Support your iPhone on something sturdy such as a hardcover book so it rests hands-free and parallel to the ground; this makes it easier to work with in the following steps.
 - Use a hair dryer to heat along the bottom edge of the iPhone. The screen should feel slightly too hot to touch.
 - ⓘ For complete instructions on how to use a hair dryer, [check out this guide](#).
 - Wait one minute to give the adhesive a chance to release and present an opening gap.
 - Insert an opening pick under the screen's plastic bezel when the Anti-Clamp creates a large enough gap.
 - ⓘ If the Anti-Clamp doesn't create a sufficient gap, apply more heat to the area and rotate the handle a quarter turn.
- ⚠ Don't crank more than a quarter turn at a time, and wait one minute between turns. Let the Anti-Clamp and time do the work for you.**
- **Skip the next three steps.**

Step 7 — Heat the bottom edge of the phone



- ① Opening the iPhone's display will compromise its waterproof seals. Have replacement seals ready before you proceed past this step, or take care to avoid liquid exposure if you reassemble your iPhone without replacing the seals.
- ① Heating the bottom edge of the iPhone helps soften the adhesive securing the display, making it easier to open.
- Use a [hair dryer](#) or a [heat gun](#) to heat the bottom edge of the iPhone for 90 seconds or until the screen is slightly too hot to touch.
 - ⚠ **Never leave your hair dryer in one spot for an extended period of time.**
- ① If you have trouble during the opening procedure, the adhesive most likely cooled down. Apply more heat to further soften the adhesive.

Step 8 — Apply a suction handle



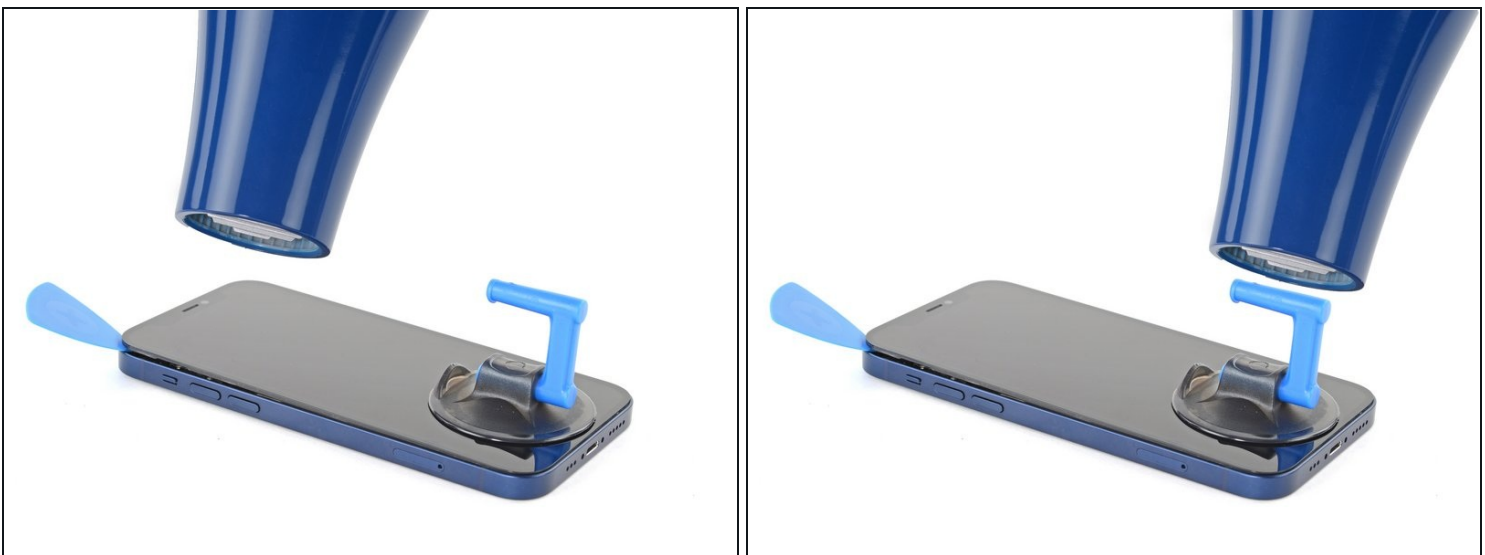
- If you're using a single suction handle, apply it to the bottom edge of the phone, as close to the edge as possible.
- If your display is badly cracked, [covering it with a layer of clear packing tape](#) may allow the suction cup to adhere. Alternatively, [very strong tape](#) may be used *instead of* the suction cup. If all else fails, you can superglue the suction cup to the broken screen.

Step 9 — Lift the screen slightly



- Pull up on the suction cup with firm, constant pressure to create a slight gap between the screen and the frame.
 - Insert an opening pick into the gap [under the screen's plastic bezel](#).
- ⓘ The watertight adhesive holding the screen in place is very strong; creating this initial gap takes a significant amount of force. If you're having a hard time opening a gap, apply more heat, and gently rock the screen up and down to weaken the adhesive until you create enough of a gap to insert your tool.

Step 10 — Heat the right edge



- Use a hair dryer to heat the right edge of the iPhone (the edge with the power button) for 90 seconds or until the screen is slightly too hot to touch.

Step 11 — Separate the screen adhesive



- Slide the opening pick around the bottom right corner and along the right edge of the iPhone, slicing through the adhesive holding the display in place.

⚠ Don't insert your pick more than 3 mm, as you may damage internal components.

Step 12 — Heat the top edge



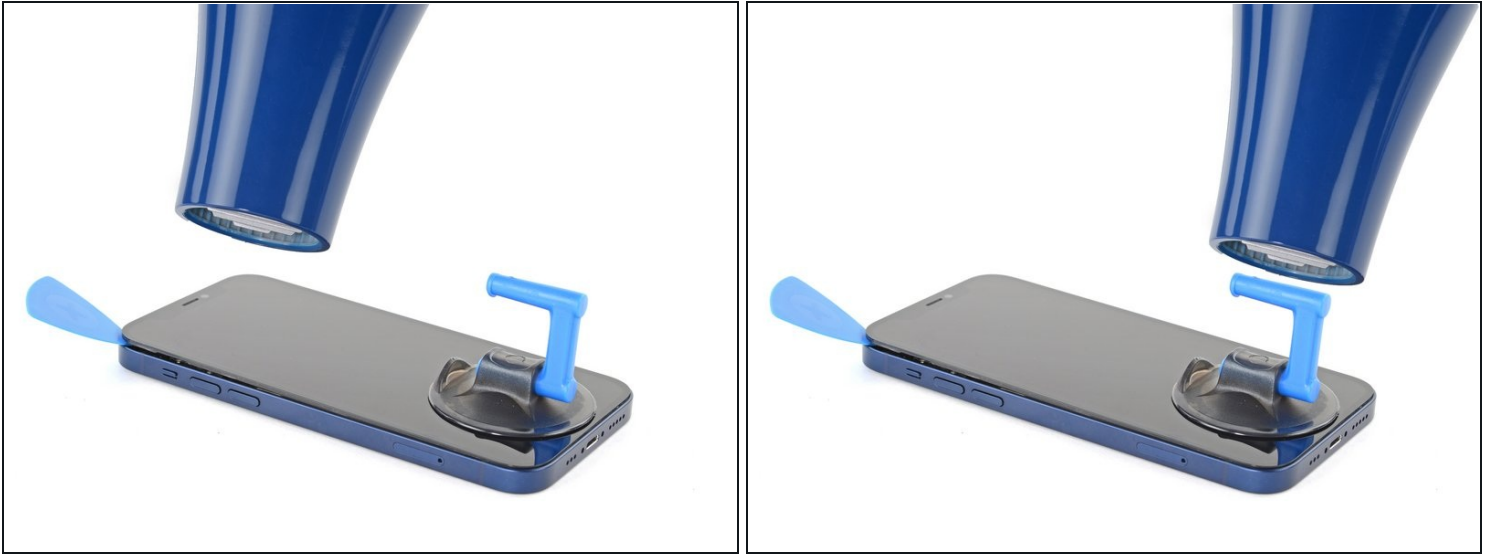
- Use a hair dryer to heat the top edge of the iPhone for 90 seconds or until the screen is slightly too hot to touch.

Step 13



- ① The top edge of the display is secured with both glue and clips.
- Insert your pick underneath the top-right corner of the display panel.
- Slide the pick around the top right corner. Because of the clips you might encounter some resistance.
- ⚠ Don't insert your pick more than 3 mm, as you may damage the front panel sensor array.
- ① Gently pulling the front panel assembly towards the bottom edge of the phone simplifies this step a little.
- Slide the pick along the top edge and cut any remaining adhesive securing the display.

Step 14 — Heat the left edge



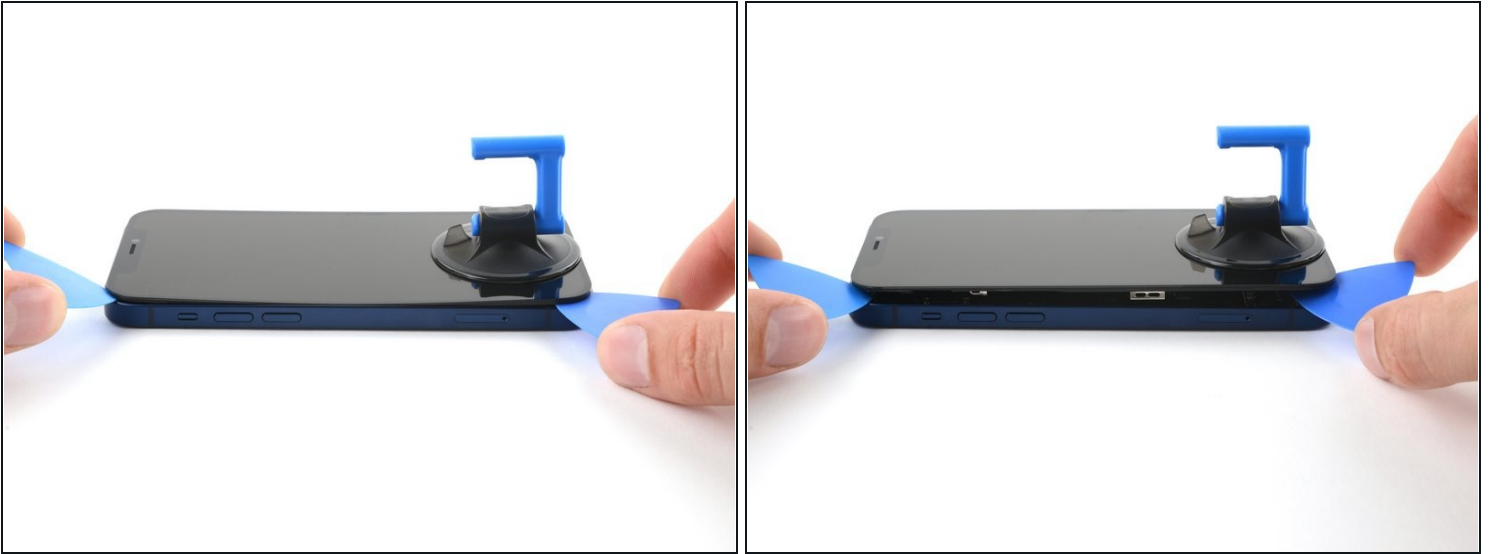
- Use a hair dryer to heat the left edge of the iPhone for 90 seconds or until the screen is slightly too hot to touch.

Step 15 — Screen information



⚠ There's a delicate cable along the left edge of your iPhone. **Don't insert your pick here,** as you may damage the cable.

Step 16 — Separate the left adhesive



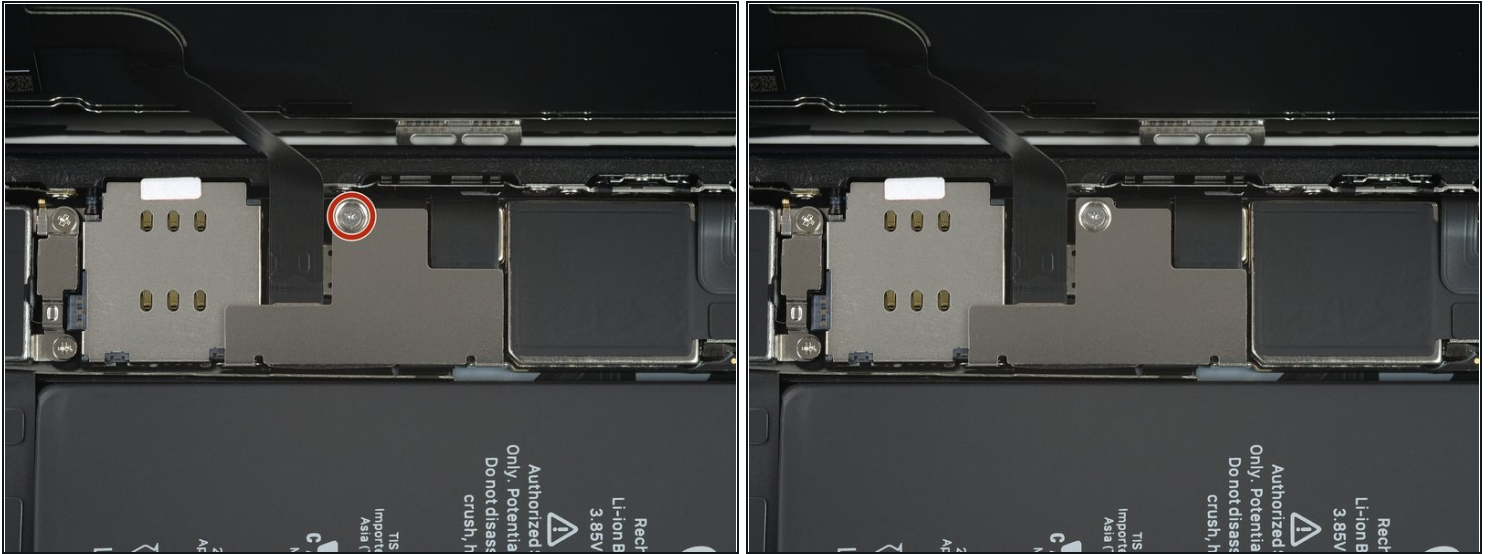
- Insert a second opening pick in the bottom left corner of the iPhone.
- Twist both picks simultaneously until the left edge clips release.
 - ① Apply the twisting force gradually.
 - ① If you're having trouble separating the adhesive, reheat the left edge.

Step 17 — Open the iPhone



- Rotate your iPhone so the right edge faces you.
 - Open the iPhone by swinging the display up from the right side, like the front cover of a book.
- ⚠ Don't try to fully separate the display yet, as several fragile ribbon cables still connect it to the iPhone's logic board.**
- Lean the display against something to keep it propped up while you're working on the phone.
- ★** During reassembly, lay the display in position, align the clips along the top edge, and carefully press the top edge into place before snapping the rest of the display down. If it doesn't click easily into place, check the condition of the clips around the perimeter of the display and make sure they aren't bent.

Step 18 — Unscrew the battery and display connector cover



- Remove the 1.25 mm-long Y000 screw securing the battery & display connector cover bracket.
 - ⓘ Throughout this repair, [keep track of each screw](#) and make sure it goes back exactly where it came from to avoid damaging your iPhone.
- ☑ During reassembly, this is a good point to power on your iPhone and test all functions before you seal the display in place. Be sure to power your iPhone back down completely before you continue working.

Step 19 — Remove the battery and display connector cover



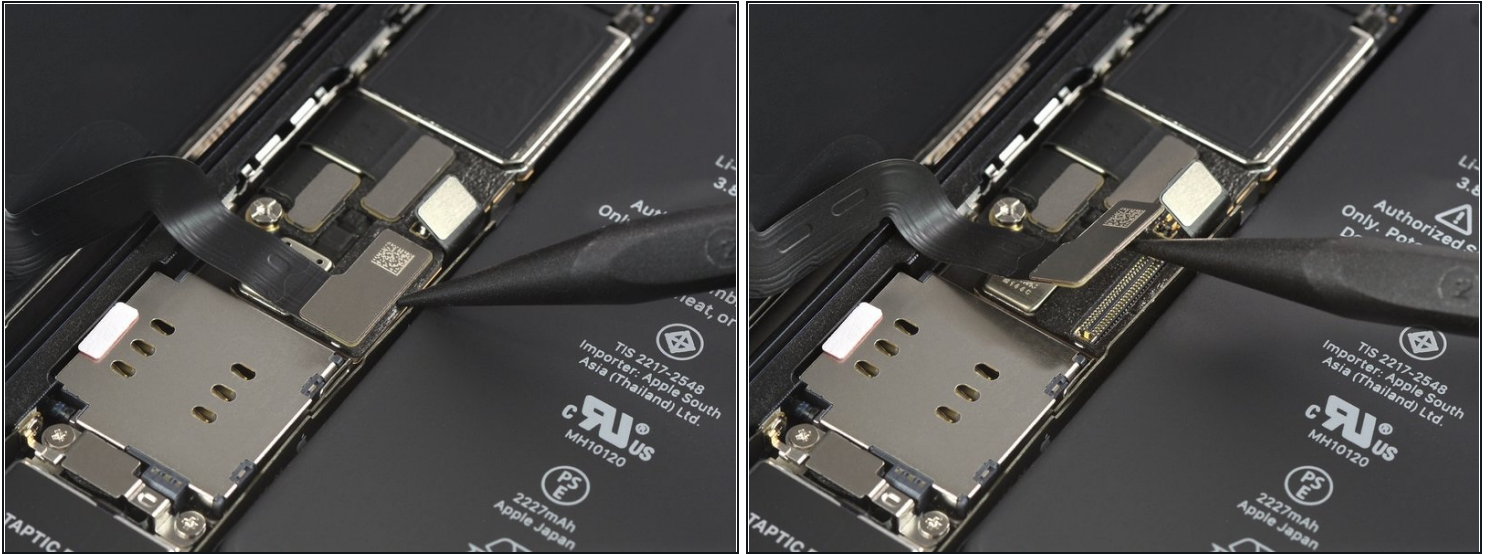
- Use a pair of [tweezers](#) to remove the battery & display connector bracket.
 - ☑ There are two little hinges on the right edge of the connector bracket. Make sure to align them with their counterparts during reassembly.

Step 20 — Disconnect the battery



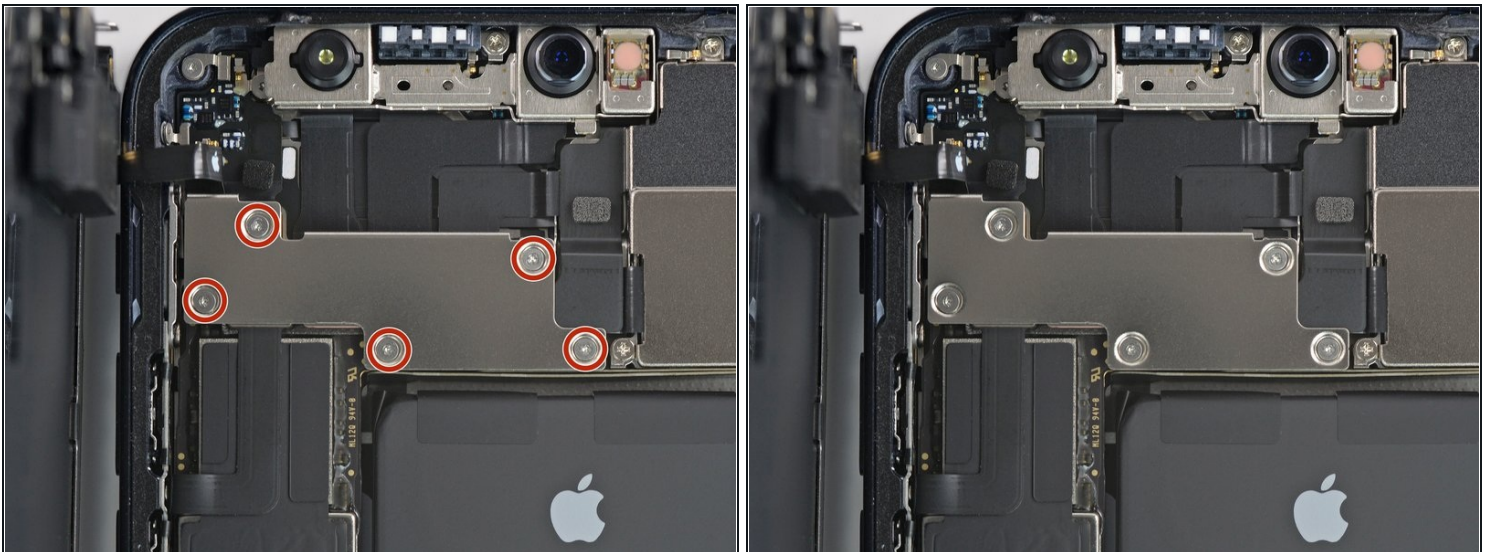
- Use a spudger or a clean fingernail to pry the battery connector up from its socket on the logic board.
 - ① Try not to damage the black silicone seal surrounding this and other board connections. These seals provide extra protection against water and dust intrusion.
- Bend the connector slightly away from the logic board to prevent it from accidentally making contact with the socket and providing power to the phone during your repair.

Step 21 — Disconnect the OLED display cable



- Use a spudger or a clean fingernail to pry the OLED panel cable connector up from its socket on the logic board.
 - ☑ To re-attach [press connectors](#) like this one, carefully align and press down on one side until it clicks into place, then repeat on the other side. Do not press down on the middle. If the connector is misaligned, the pins can bend, causing permanent damage.

Step 22 — Unscrew the front sensor assembly cover



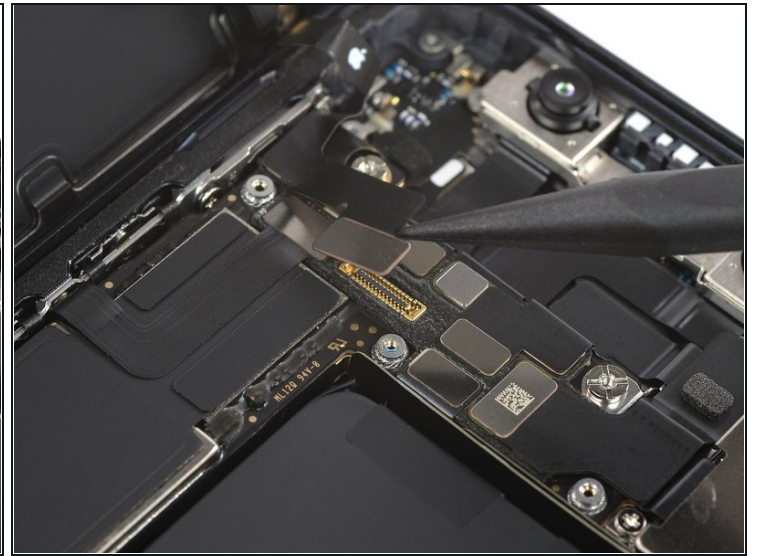
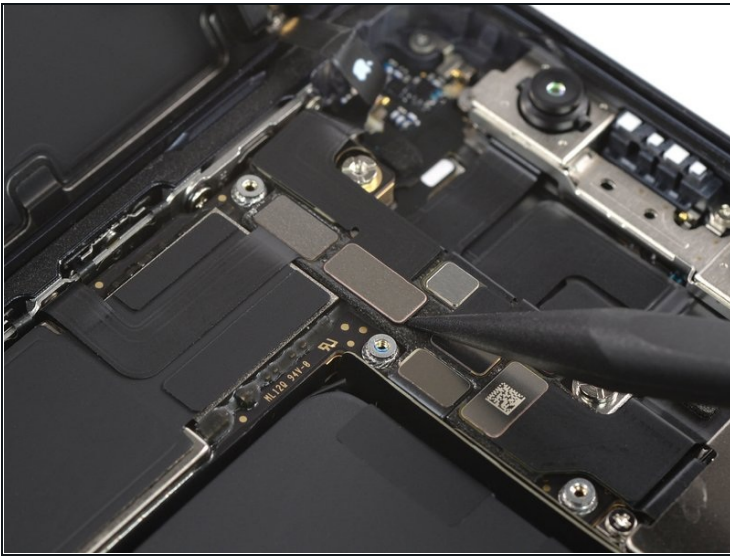
- Remove the five 1 mm-long Y000 screws securing the front sensor assembly cover bracket.

Step 23



- Use a pair of tweezers to remove the front sensor assembly bracket.

Step 24 — Disconnect the front sensors



- Use a spudger or a clean fingernail to disconnect the front sensor assembly cable connector.

Step 25 — Remove the display assembly



- Remove the display assembly.
- ☑ During reassembly, pause here if you wish to [replace the waterproof adhesive around the edges of the display](#).

Step 26 — Unscrew the speaker



- Remove the four 1.5 mm-long Phillips #000 screws securing the speaker.

Step 27 — Remove the speaker



- Use a pair of [tweezers](#) to remove the speaker.

Step 28 — Remove the adhesive strips



- Peel down the first battery adhesive pull-tab to un-stick it from the bottom edge of the battery.

⚠ Don't jab the battery with any sharp tools. A punctured battery may leak dangerous chemicals or catch fire.

Step 29



- Grab the pull tab with your fingers and *slowly* pull it away from the battery, toward the bottom of the iPhone.
- Pull hard enough to maintain tension on the strip, but don't force it. Give it plenty of time to stretch and un-stick from under the battery.
- Don't press down on the battery. Hold the iPhone firmly by its sides.
- Keep the strip flat and unwrinkled. Try to pull evenly on the whole strip, rather than pulling mainly in the middle or on one side.
- Pull at a low angle so the strip doesn't snag on the edge of the battery.
- If the adhesive strip breaks off, try to retrieve it using your fingers or blunt [tweezers](#), and continue pulling—but **do not** pry under the battery.

⚠ If any of the adhesive strips break off underneath the battery and can't be retrieved, try to remove the other strips, and then proceed as instructed below.

Step 30



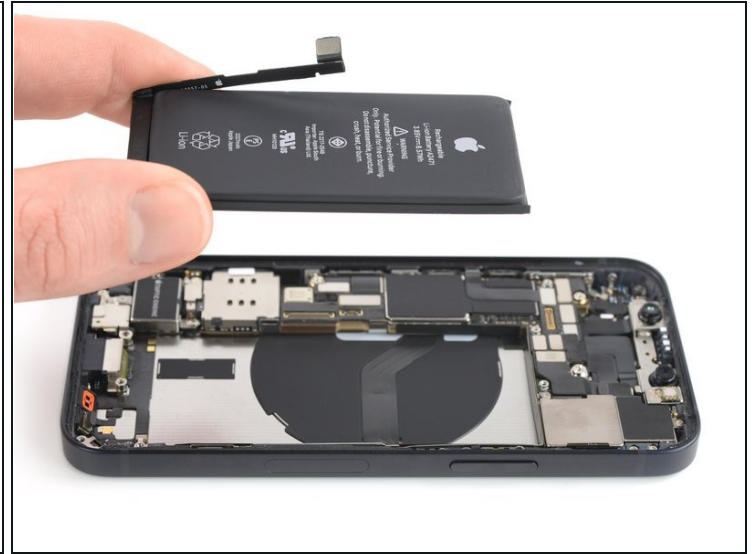
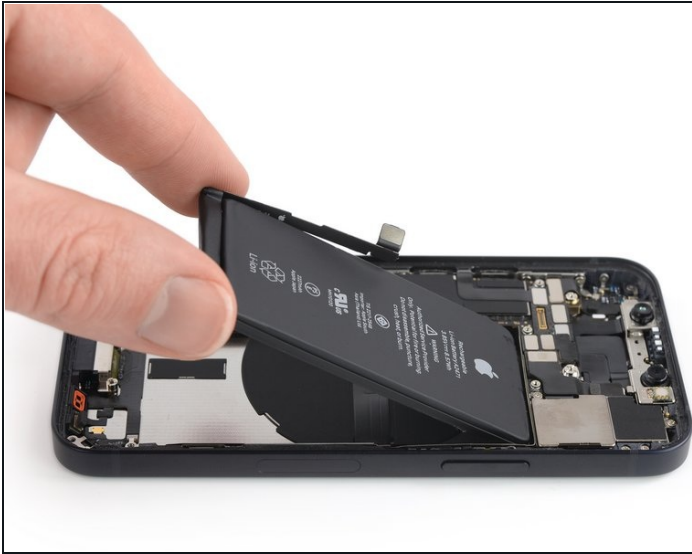
- Grab the wide pull tab with your fingers and *slowly* pull it away from the battery, toward the bottom of the iPhone.

Step 31



- Grab the pull tab with your fingers and *slowly* pull it away from the battery, toward the bottom of the iPhone.
 - Repeat the previous procedure on the two remaining pull tabs.
- ⓘ If the adhesive breaks off underneath the battery and can't be retrieved, apply a few drops of high concentration (over 90%) isopropyl alcohol under the edge of the battery in the area of the broken adhesive strip(s).
- Wait about one minute for the alcohol solution to weaken the adhesive.
 - Use the flat end of a spudger to gently lift the battery.
- ⚠ Don't try to forcefully lever the battery out. If needed, apply a few more drops of alcohol to further weaken the adhesive. Never deform or puncture the battery with your pry tool.

Step 32 — Remove the battery.



- Remove the battery.
- If there's any alcohol solution remaining in the phone, carefully wipe it off or allow it to air dry before installing your new battery.
- ☑ Use [this guide](#) to install new battery adhesive strips.
- ☑ Perform a [force restart](#) after reassembly. This can prevent several issues and simplify troubleshooting.

If possible, turn on your device and test your repair before installing new adhesive and resealing.

[Secure the new battery with pre-cut adhesive](#) or double-sided adhesive tape. In order to position it correctly, apply the new adhesive into the device at the places where the old adhesive was located, not directly onto the battery. Press the new battery firmly into place.

To reassemble your device, follow the above steps in reverse order. Apply new adhesive where necessary after cleaning the relevant areas with isopropyl alcohol (>90%).

For optimal performance, after completing this guide, [calibrate](#) your newly installed battery.

Take your e-waste to an [R2 or e-Stewards certified recycler](#).

Repair didn't go as planned? Try some [basic troubleshooting](#), or ask our [iPhone 12 mini Answers community](#) for help.