



Ring Video Battery and Wi-Fi Antenna Replacement.

Written By: AZUL BOCANDREA



INTRODUCTION

To see how to disassemble it, check this other guide on this same site.

[Ring Doorbell Battery Replacement](#)

Step 1 — Battery and Wi-Fi antenna



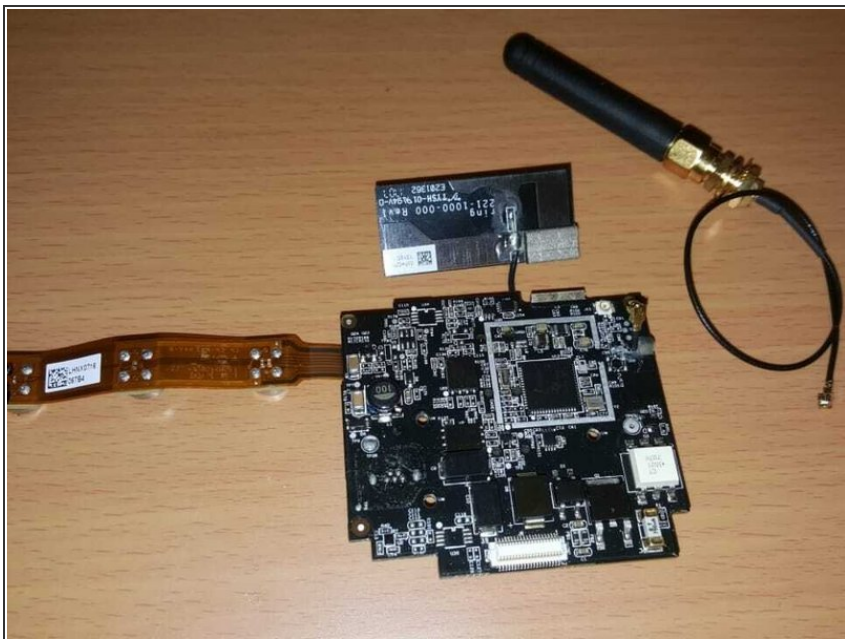
- Battery made of 2 units and a controller card with a 5-wire output. This battery can possibly be replaced by another one of the same final voltage, either by a parallel arrangement or by a direct connection of a unit.
- The final amperage doesn't need to be the same as the original battery.
- The shape of the new battery doesn't need to be the same either, since it can be placed externally just by inserting the cables.

Step 2



- Both options, using the controller card to facilitate the connection to the main motherboard, so it can recognize the power source.

Step 3



- The main motherboard with antenna card, and the chance of upgrading it with a generic antenna, improving reception and transmission.

To reassemble your device, follow these instructions in reverse order