



GPU Replacement On a Deepcool Kendomen and MSI Z97 Gaming 5 Motherboard

GPU Replacement is something you do once your o...

Written By: Faiz Khan



INTRODUCTION

GPU Replacement is something you do once your old GPU is obsolete, so we're here to show you how to replace your old one with a new one, no special skills required.

This is an easy step by step guide on how to replace a Graphics Processing Unit (GPU) that is inside a Deepcool Kendomen, on an MSI Z97 Gaming 5 Motherboard.

- Before using this guide please ensure that you have your new GPU unpacked and ready to install.
- Please turn off your Desktop before starting.

Here is the [user guide](#) released by Deepcool for the Kendomen.



TOOLS:

[Phillips #0 Screwdriver](#) (1)



PARTS:

[GeForce GTX 960 Graphics Card](#) (1)

[Deepcool Kendomen](#) (1)

[MSI Z97 Gaming 5](#) (1)

Step 1 — Graphics Processing Unit (GPU)



⚠ Make sure your Computer is off before starting!

- Unplug your desktop from the wall outlet.
- Turn your desktop so you have access to the back of the device.

Step 2



- Switch off the PSU to prevent power flow.
- Unplug your desktop to prevent any power flow.

Step 3



- Use the Phillips #0 screwdriver to remove the two 15 mm screws on the glass panel side and remove the panel.

Step 4

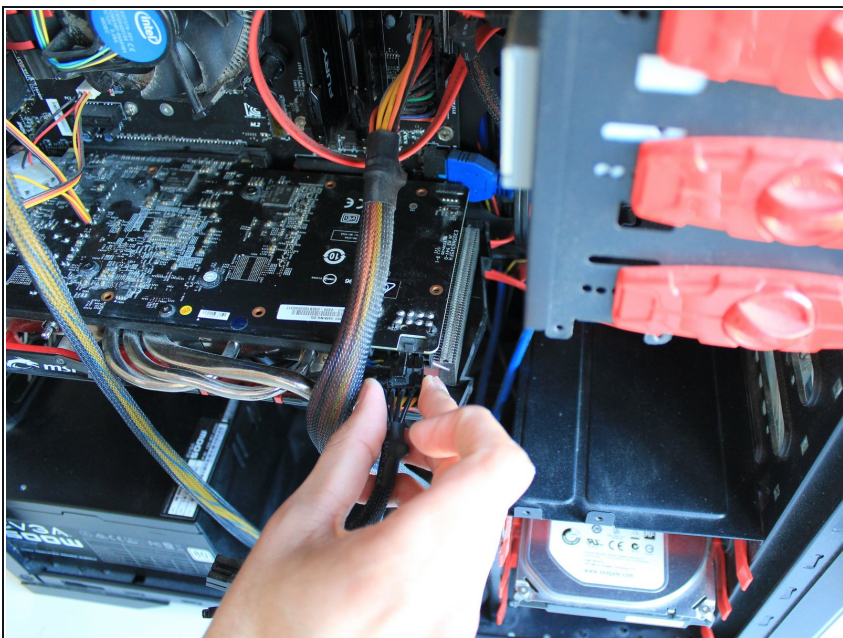


- Gently remove the glass panel, by sliding it towards yourself.

⚠ The panel contains glass so be gentle with it!

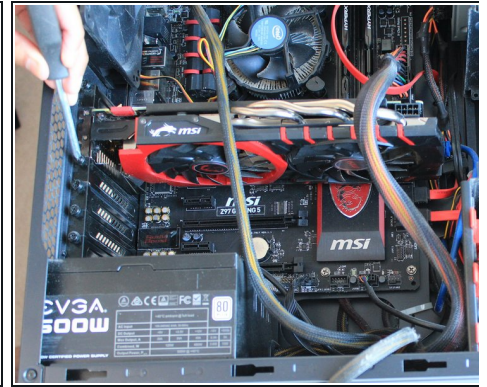
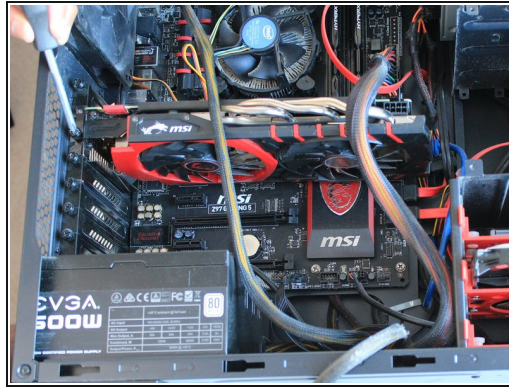
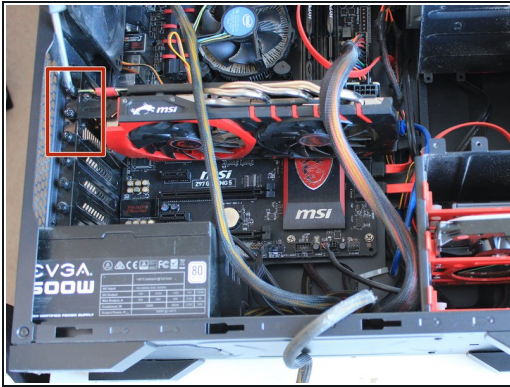
- The GPU is highlighted.
- Using the Phillips #0 screwdriver, remove the three 14 mm screws connecting the GPU to the case.
- Unplug the power cable on the GPU.

Step 5



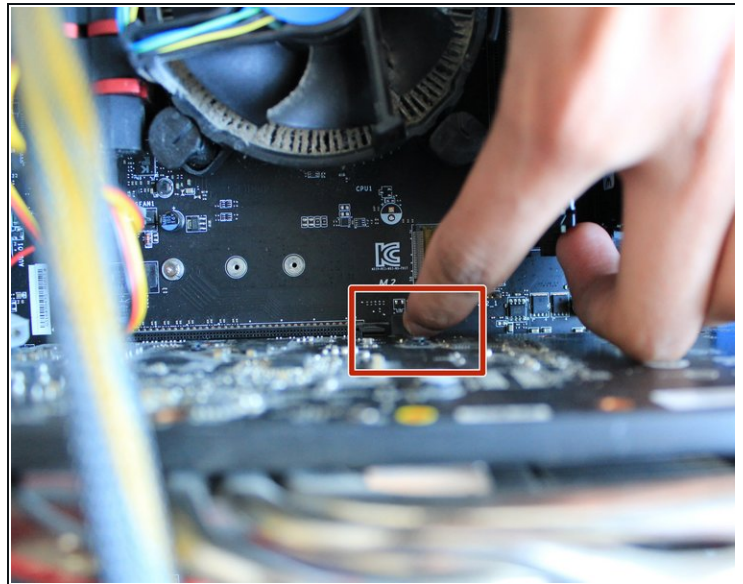
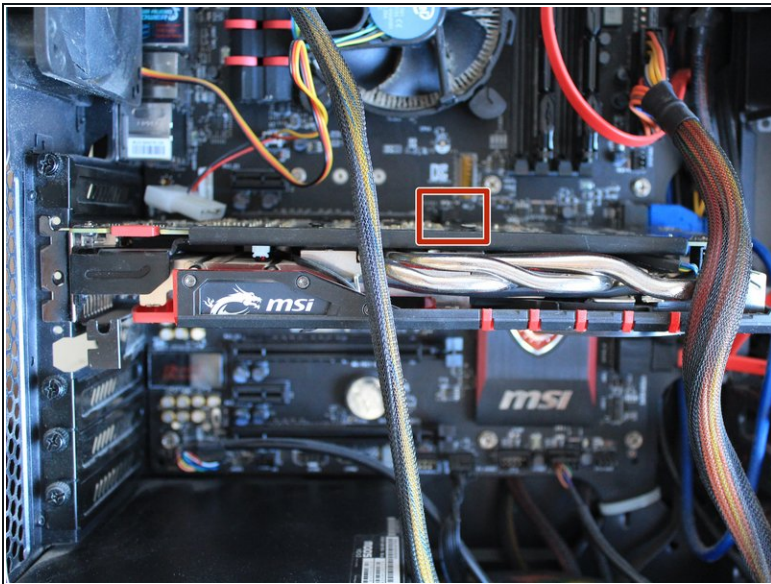
- Unplug the GPU from the power supply, since we need to remove anything connected to it.

Step 6



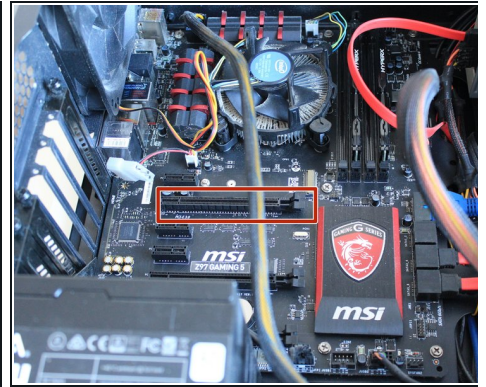
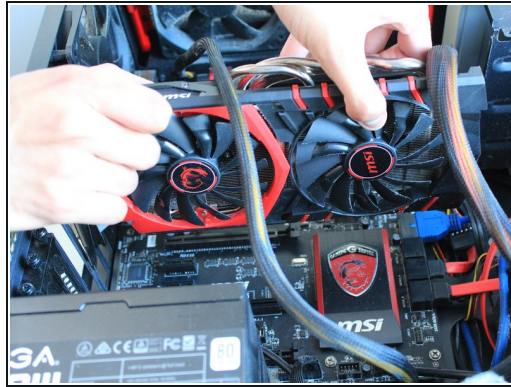
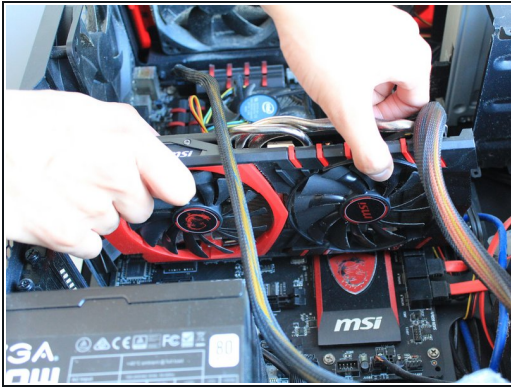
- Use the Phillips #0 to remove the three 14mm Phillips screws from the GPU and motherboard so we can remove the GPU later.

Step 7



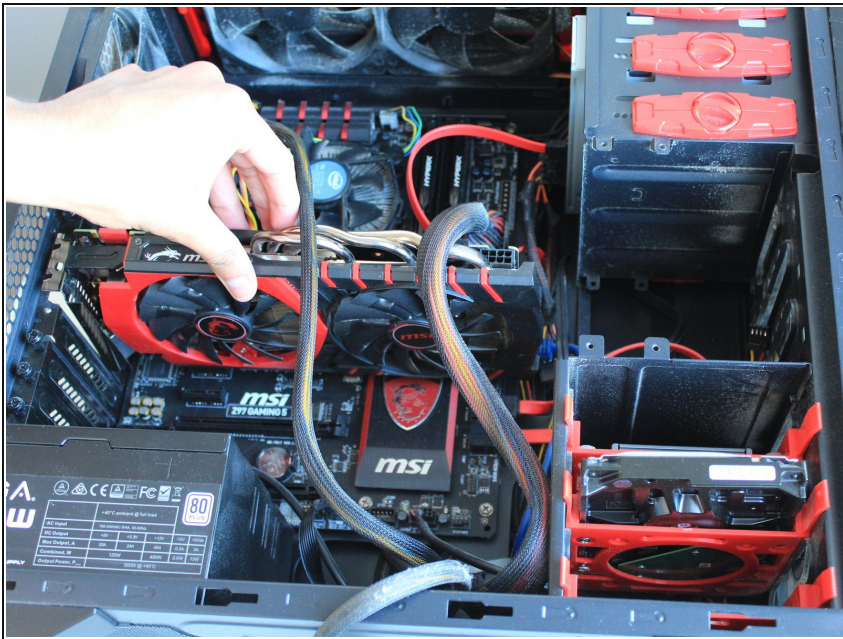
- Push down on the tab to unlock the GPU.
- ⓘ The tab unlocks easily, so don't apply too much force.

Step 8



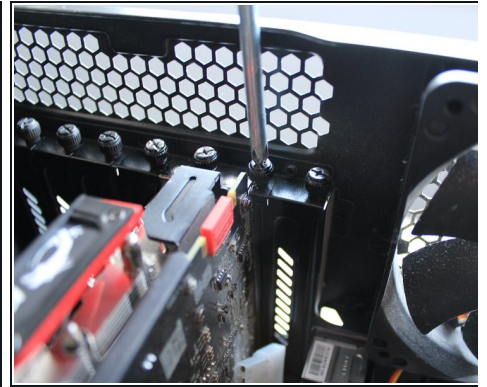
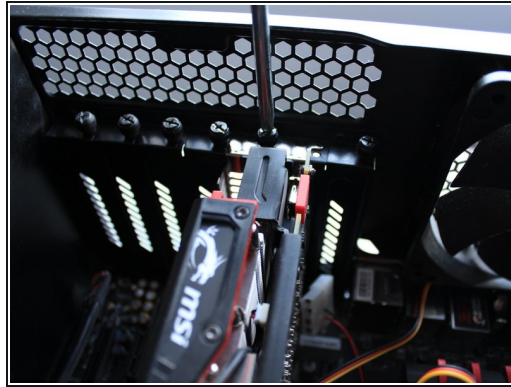
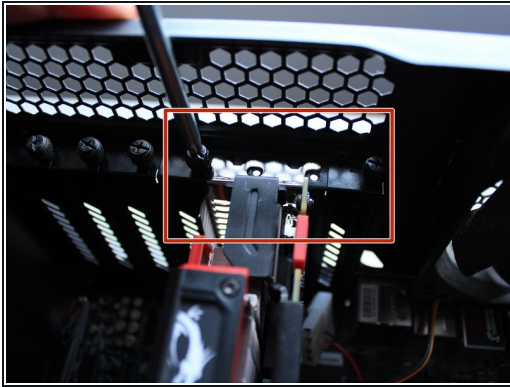
- Gently pull the old GPU out.
- ⓘ The PCI-E slot is now empty for a new GPU.

Step 9



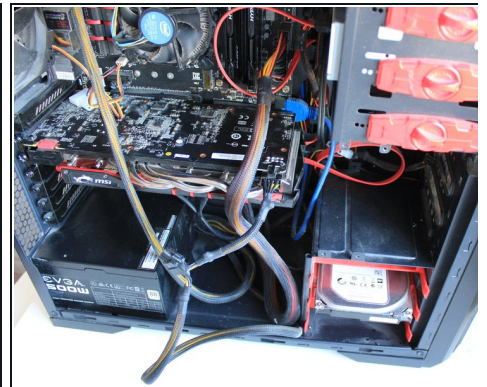
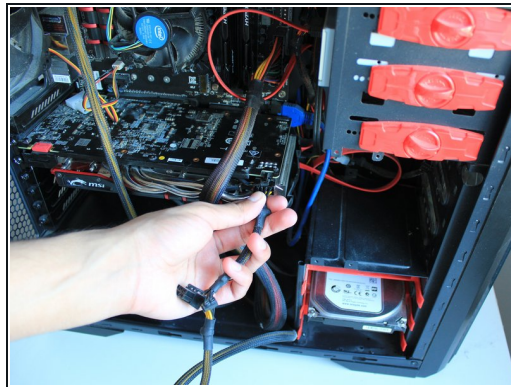
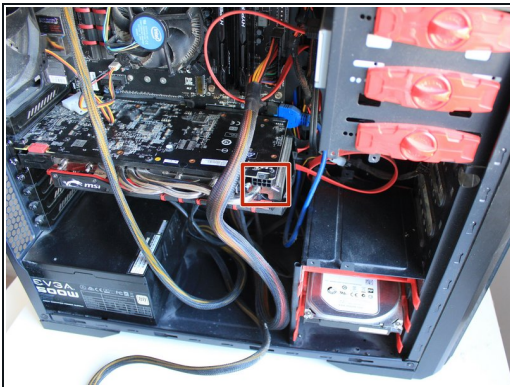
- Line up the GPU with the PCI-E Slot.
- Push the GPU in, make sure to line it up properly with the PCI-E and the rear end of the case.
- ⓘ The tab will click in when you push the GPU in.

Step 10



- Screw the three 14 mm Phillips screws back in using the Phillips #0 screwdriver.

Step 11



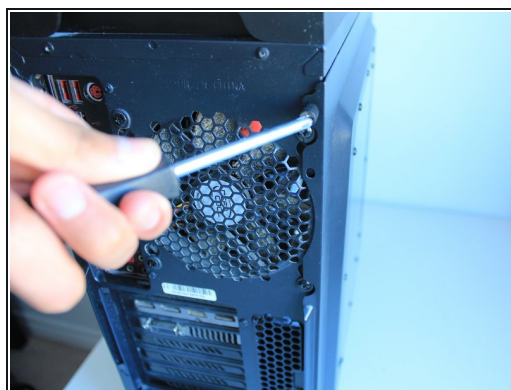
- Reconnect the 8-Pin Male Cable from the PSU into the GPU to power it when we turn it on.

Step 12



- Slide the glass panel back in.

Step 13



- Using the Phillips #0 screwdriver, screw in the two 15 mm screws back into the case to lock the panel into place.

Step 14



- Connect the female part of the power cord into the PSU.
 - Turn on the switch and power on your PC.
-

The brand or generation of GPU you intend to install does not matter, as long as it can fit the PCI-E slot located on your motherboard.