



How to Manually Eject a Stuck Disc in a PlayStation 5

Use this guide to manually remove a stuck disc...

Written By: Jason Pinto



INTRODUCTION

Use this guide to manually remove a stuck disc inside your PlayStation 5.

Having a disk stuck inside your PlayStation 5 can cause serious damage to the console and disk. If the disk is stuck and you try to remove it improperly, you can scratch the disc or damage the disk reader inside the PlayStation itself.

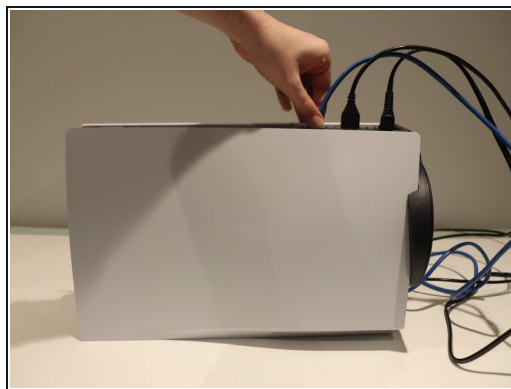
Before beginning this guide, be sure that the console is off and unplugged from any power source.

TOOLS:

[6-in-1 Screwdriver](#) (1)

[Kreuzschlitzschraubendreher #0](#) (1)

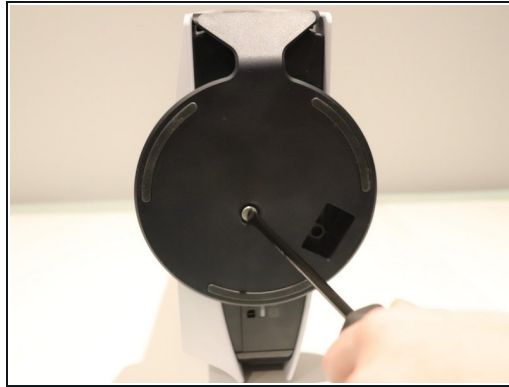
Step 1 — How to Manually Eject a Stuck Disc in a PlayStation 5



- Unplug all cables going into the console (power, ethernet, hdmi and etc).

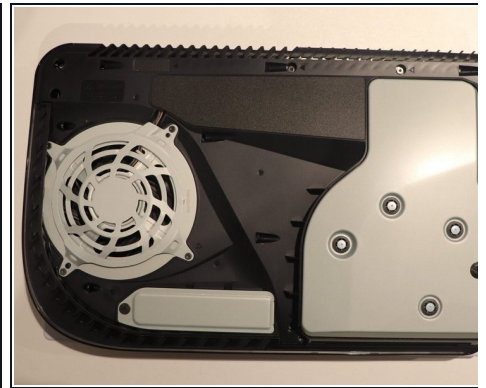
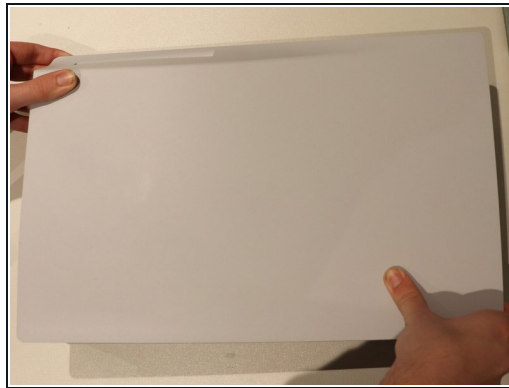
 This should be done for your safety and for the safety of the device.

Step 2



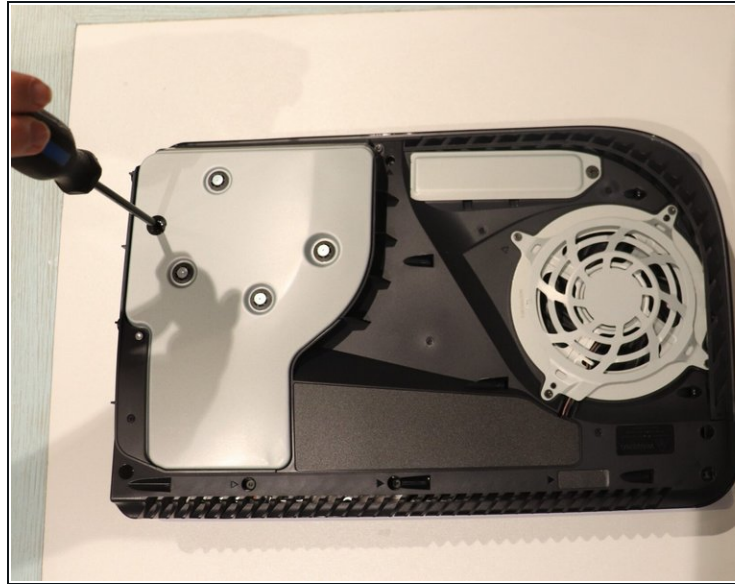
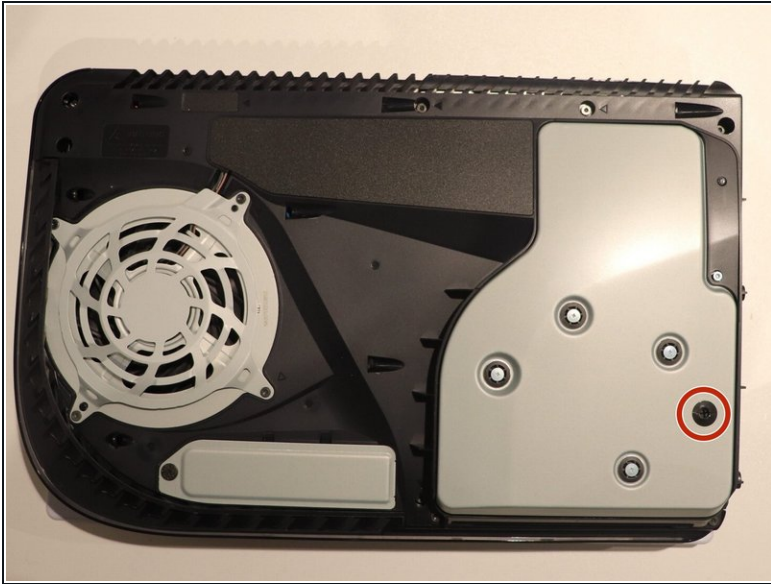
- ❗ If you are using a stand to hold your PlayStation, locate the screw at the bottom.
- Using the flathead screwdriver, unscrew the 5mm Phillips screw from the base.
- Remove the base, and place it off to the side.

Step 3



- Place the PlayStation on the side without the PlayStation logo.
- Pull up on the top right corner of the PlayStation . This corner can be found diagonally across from the disc tray. Pull the cover toward the disc tray, in a diagonal direction.
- ❗ To remove the white cover, it may take some force.

Step 4



- Poke a hole through the black sticker with the Philip's head screwdriver or spudger.

Step 5



- Use the screwdriver as a key to turn the screw inside the black sticker clockwise.
- ⓘ The disc should come out after several turns.

To reassemble your device, follow these instructions in reverse order.