



Huawei P40 Pro Rear Glass Replacement

How to remove the rear glass on your Huawei P40 Pro.

Written By: Dominik Schnabelrauch



INTRODUCTION

Use this guide to remove the rear glass on your Huawei P40 Pro.

You'll need replacement adhesive to reattach components when reassembling the device.



TOOLS:

- [iOpener](#) (1)
- [Suction Handle](#) (1)
- [iFixit Opening Picks \(Set of 6\)](#) (1)
- [iMac Opening Wheel](#) (1)



PARTS:

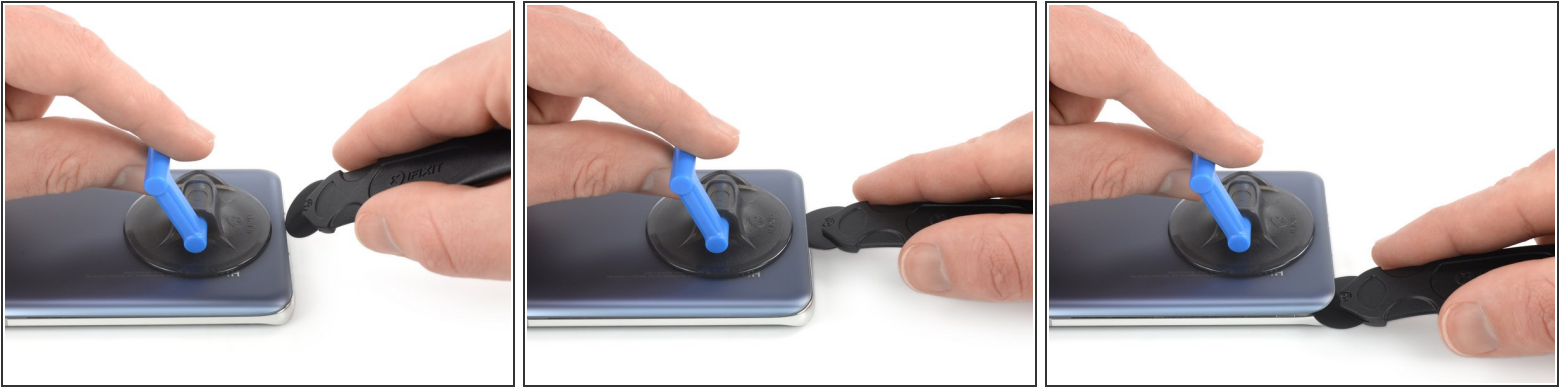
- [Precut Adhesive Card](#) (1)
optional
- [iFixit Adhesive Remover \(for Battery, Screen, and Glass Adhesive\)](#) (1)
optional

Step 1 — Loosen the rear glass adhesive



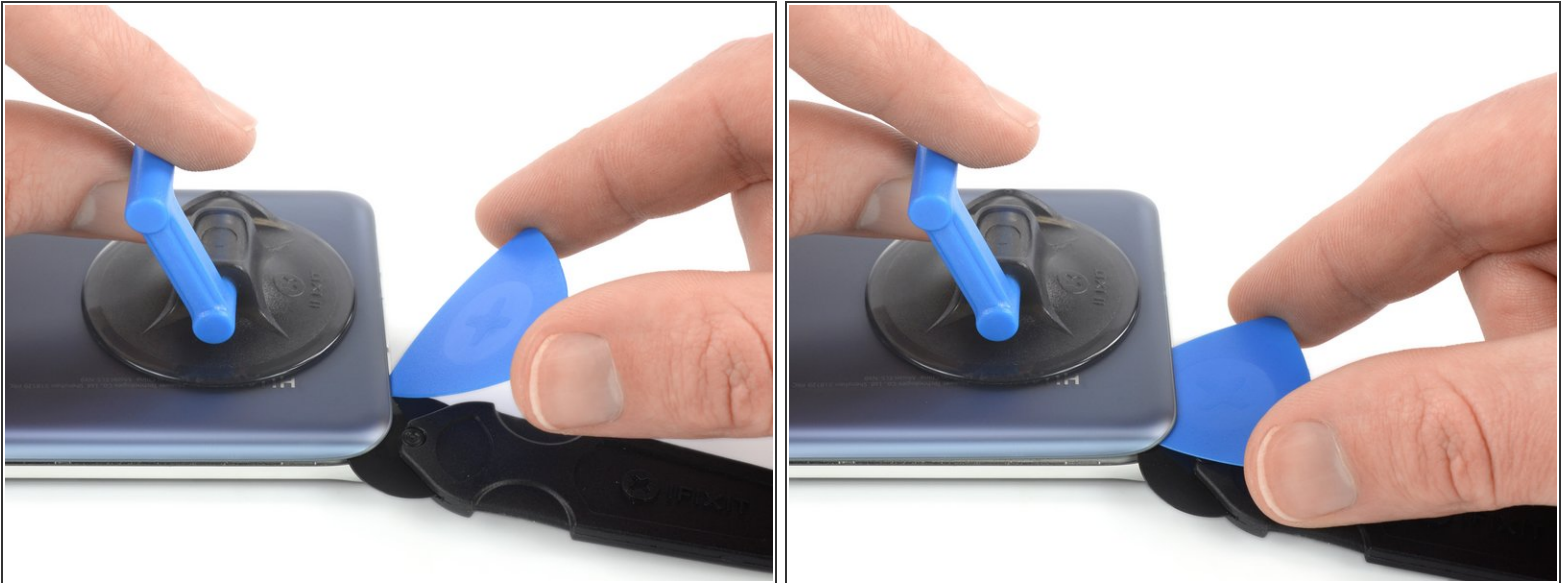
- Apply a [heated iOpener](#) to the rear glass to loosen the adhesive underneath. Apply the iOpener for at least two minutes.

Step 2 — Insert an opening wheel



- ❗ Since the rear glass of the Huawei P40 Pro is curved, we highly recommend to slice the adhesive with a softer plastic tool like the iMac opening wheel before working with opening picks to prevent the rear glass from shattering.
- Secure a suction handle to the bottom edge of the rear glass, as close to the curved edge as possible.
- ❗ If your rear glass is badly cracked, [covering it with a layer of clear packing tape](#) may allow the suction cup to adhere. Alternatively, [very strong tape](#) may be used instead of the suction cup. If all else fails, you can superglue the suction cup to the rear glass.
- Lift the back cover with the suction handle to create a small gap between the back cover and the frame.
- ❗ In case you have trouble creating a gap, apply more heat to further soften the adhesive. Follow the iOpener instructions to avoid overheating.
- Insert an iMac opening wheel into the gap.
- Slide the opening wheel to the bottom left corner to slice the adhesive.

Step 3 — Insert an opening pick



- Insert an opening pick into the gap between rear glass and frame at the bottom left corner of your phone to prevent the adhesive from resealing.


Step 4 — Cut the rear glass adhesive



- Reinsert the opening wheel at the bottom edge of the rear glass.
- Slide the opening wheel to the bottom right corner to slice the adhesive.
- Insert an opening pick underneath the bottom right corner of the rear glass, next to the opening wheel to prevent the adhesive from resealing.

Step 5



-  If the adhesive becomes hard to cut, it has most likely cooled down. [Use your iOpener](#) to reheat it.
- Insert the opening wheel underneath the bottom left corner of the rear glass.
 - Slide the opening wheel along the left edge of your Huawei P40 Pro to cut the adhesive.
 - Insert an opening pick underneath the top left corner of the rear glass, next to the opening wheel to prevent the adhesive from resealing.

Step 6



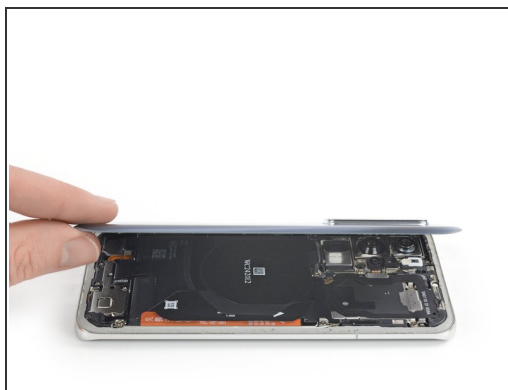
- Insert the opening wheel underneath the top left corner of the rear glass.
- Slide the opening wheel along the top edge of your phone to cut the adhesive.
- Insert an opening pick underneath the top right corner of the rear glass, next to the opening wheel to prevent the adhesive from resealing.

Step 7



- Insert the opening wheel underneath the top right corner of the rear glass.
- Slide the opening wheel along the right edge of your phone to cut the remaining adhesive.

Step 8 — Remove the rear glass



- Remove the rear glass.

To reassemble your device, follow these instructions in reverse order. Apply new adhesive where necessary after cleaning the relevant areas with isopropyl alcohol (>90%).

Secure the rear glass with pre-cut adhesive or double-sided adhesive tape during reassembly.

Removal didn't go as planned? Try some [basic troubleshooting](#), or ask our [Answers community](#) for help.