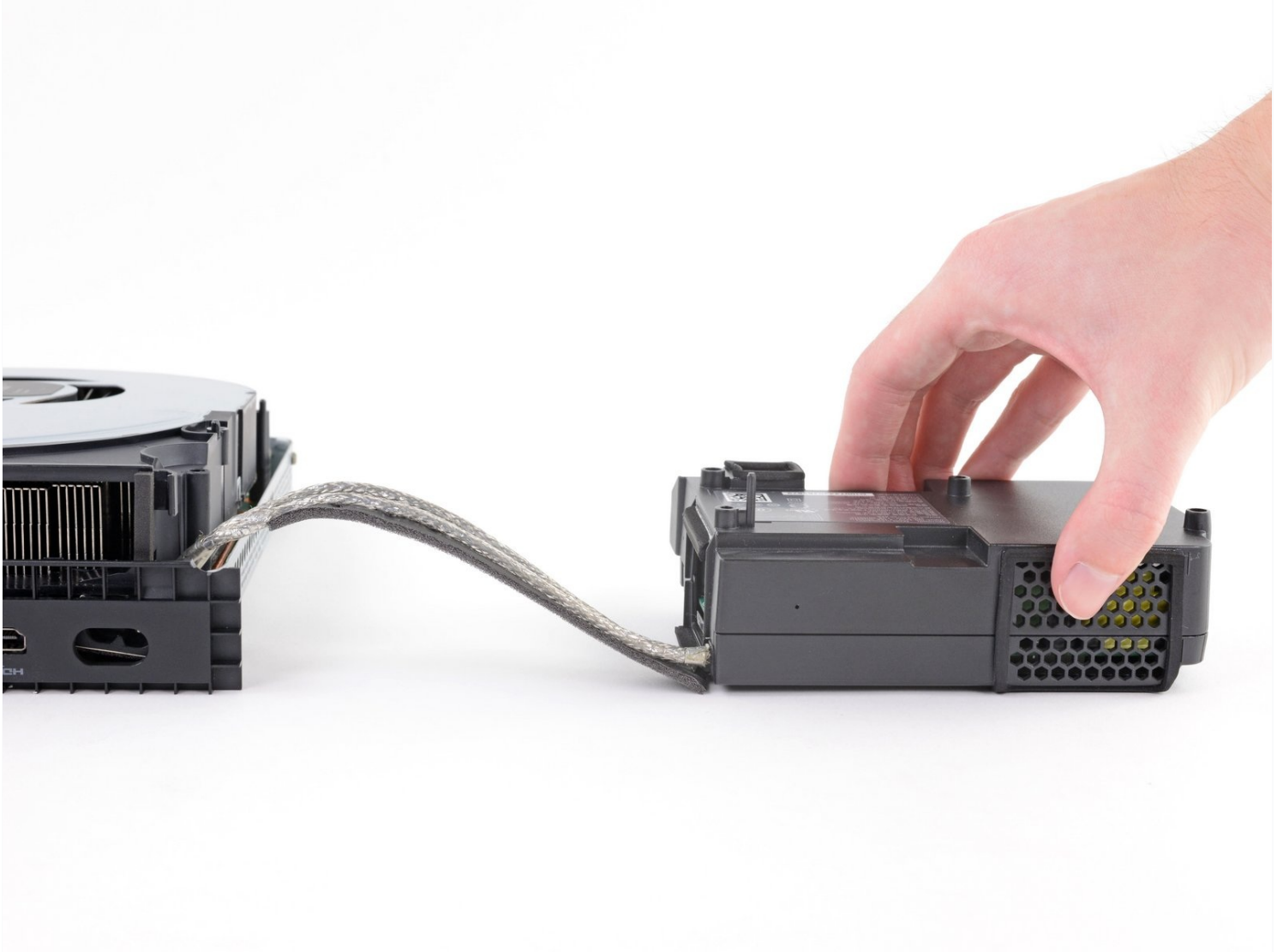




Xbox One X Power Supply Replacement

Follow this guide to replace the power supply...

Written By: Kyle Smith



INTRODUCTION

Follow this guide to replace the power supply on your Xbox One X model 1787. You might do this if other troubleshooting methods aren't working to fix power-related issues with your console.

Turn off the console and unplug any cables before beginning this guide. Follow general electrostatic discharge (ESD) safety procedures while repairing the console.

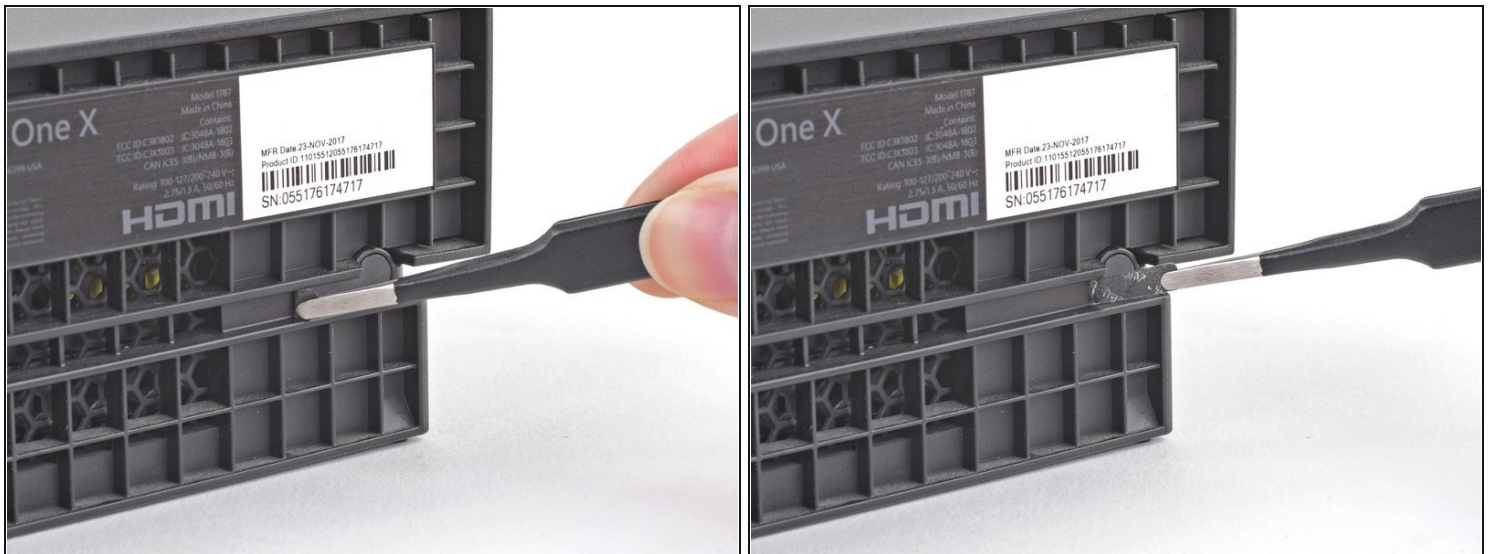
🔧 TOOLS:

ESD Safe Blunt Nose Tweezers (1)
Spudger (1)
TR8 Torx Security Screwdriver (1)
TR10 Torx Security Screwdriver (1)

⚙️ PARTS:

Xbox One X Power Supply (1)

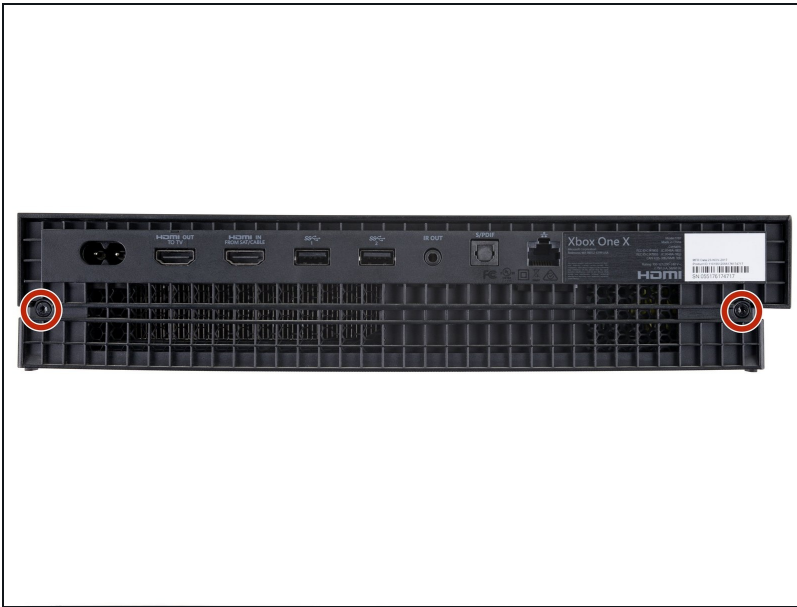
Step 1 — Remove the sticker



- Use blunt tweezers to peel off the sticker covering the right-side screw on the back of the console.

⚠️ Before starting this guide: Turn off the device. Then, unplug any cables from the console.

Step 2 — Remove the external screws



- Use a T10 Torx screwdriver to remove the two 12.6 mm–long screws located on the back of the console.

Step 3 — Slide the upper case horizontally



- Rotate the console 90 degrees.
- Pull the front of the upper plastic case horizontally toward the front of the console until it comes to a stop. This slides the clips out of the slots on the upper plastic case.

Step 4 — Lift the upper case off the lower case



- Rotate the console 90 degrees so that the back is facing you.
- Lift up the left side of the upper plastic case (as viewed from the back of the console), stopping when it won't lift any further.

Step 5



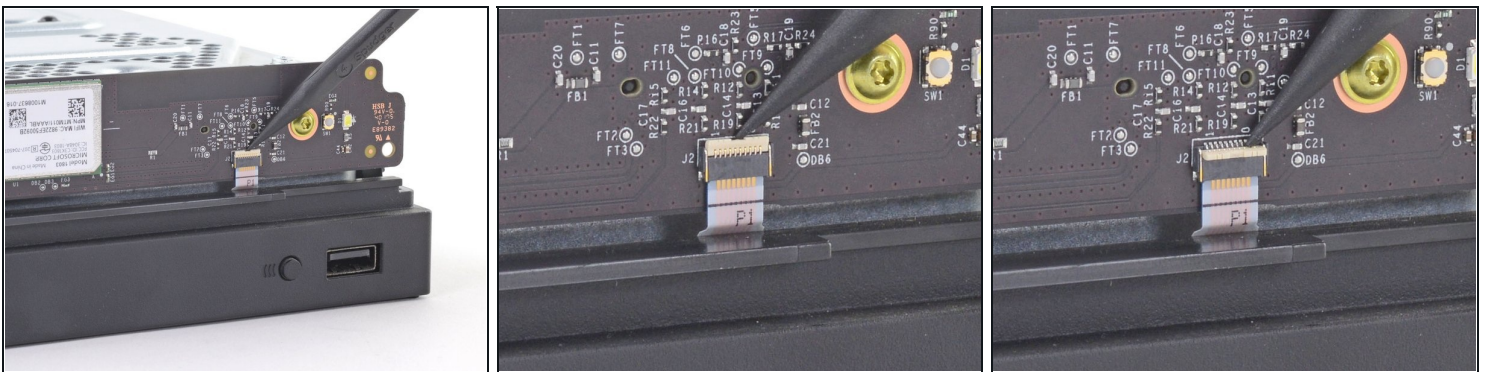
- While continuing to hold the left side of the upper plastic case, push up on the right side to move the right-side screw boss out of the way.
 - ❗ If pushing up on the case doesn't work, try moving it in different directions until it can swing open.
- Swing the upper plastic case open to 75 degrees.

Step 6



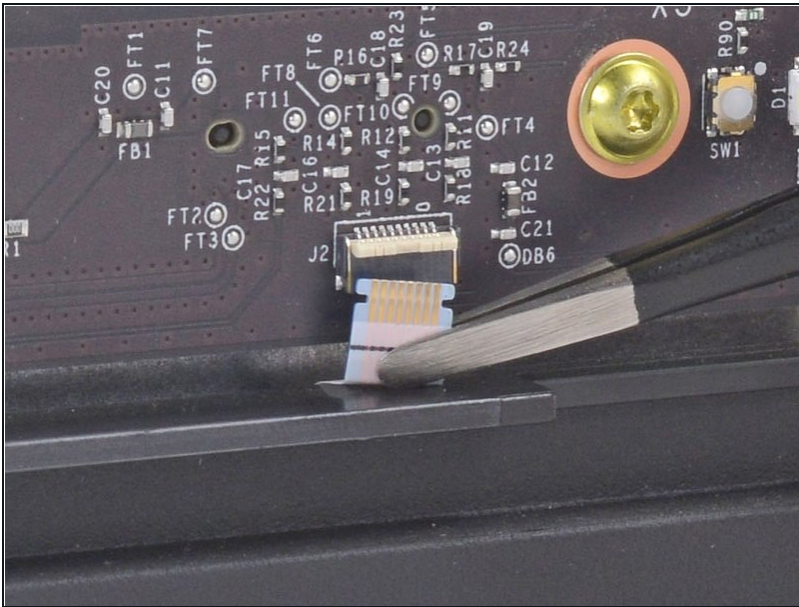
- Push the upper plastic case down and away from the console to remove it completely.

Step 7 — Disconnect the ribbon cable



- Use the pointed end of a spudger, an opening tool, or your fingernail to flip down the small, hinged locking flap on the ribbon cable [ZIF connector](#) on the front circuit board.

Step 8 — Disconnect the ribbon cable



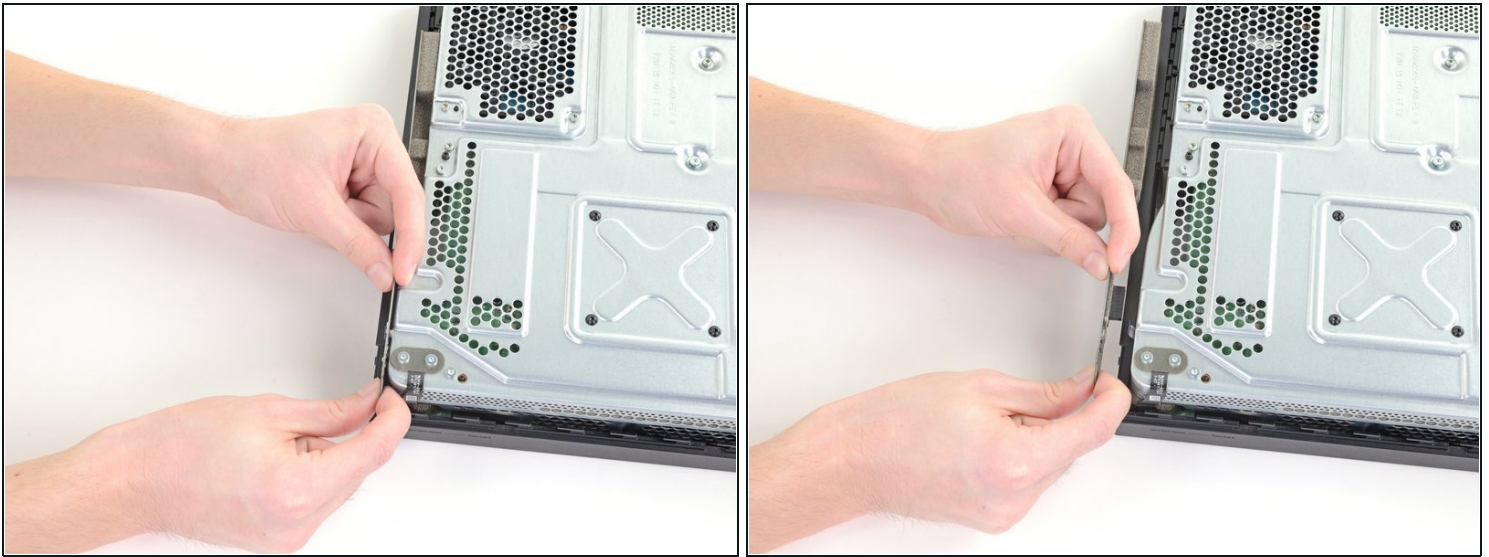
- Use blunt tweezers to pull the ribbon cable down out of the connector.

Step 9 — Remove the front circuit board screws



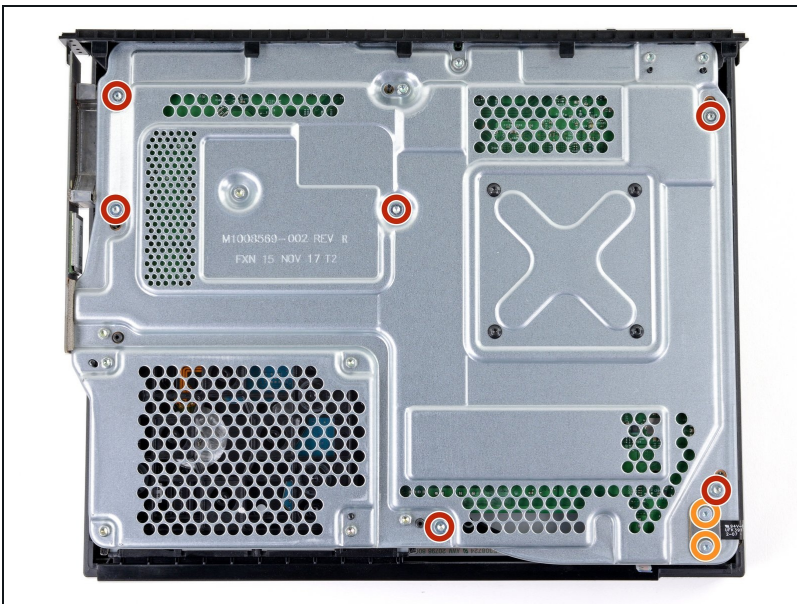
- Use a T8 Torx screwdriver to remove the three 13.3 mm screws securing the front circuit board to the upper metal case.

Step 10 — Remove the front circuit board



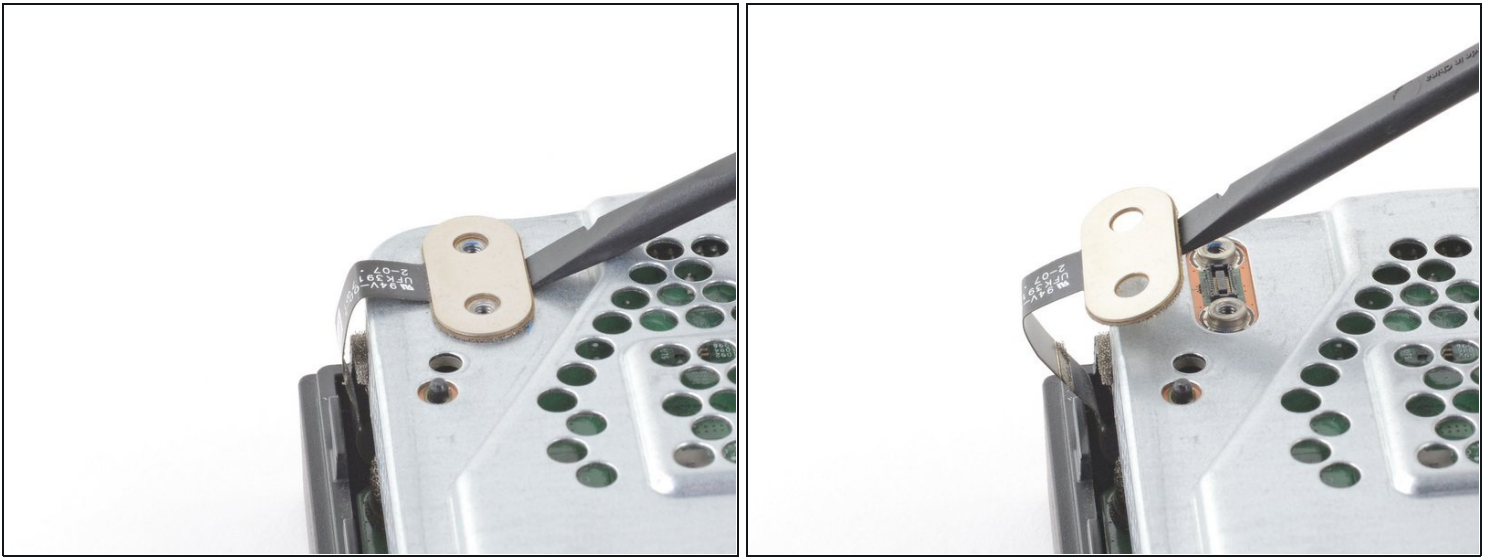
- Pull the front circuit board straight out away from the upper metal case and set it aside.
⚠ Grip the board on either side of where it is plugged in to avoid bending and damaging it.

Step 11 — Remove the upper metal case screws



- Use a T10 Torx screwdriver to remove the six 47.7 mm screws securing the upper metal case to the lower plastic case.
- Use a T8 Torx screwdriver to remove the two 7.5 mm screws securing the press connector to the upper metal case.

Step 12 — Detach the press connector



- Insert the flat end of a spudger underneath the press connector on the side opposite of the ribbon cable.
- Use the spudger to lift the press connector up and away from the upper metal case.

⚠ Don't push the spudger all the way to the socket. Prying up the socket may damage it.

- ☑ To re-attach [press connectors](#) like this one, carefully align and press down on one side until it clicks into place, then repeat on the other side. Do not press down on the middle. If the connector is misaligned, the pins can bend, causing permanent damage.

Step 13 — Remove the lower plastic case



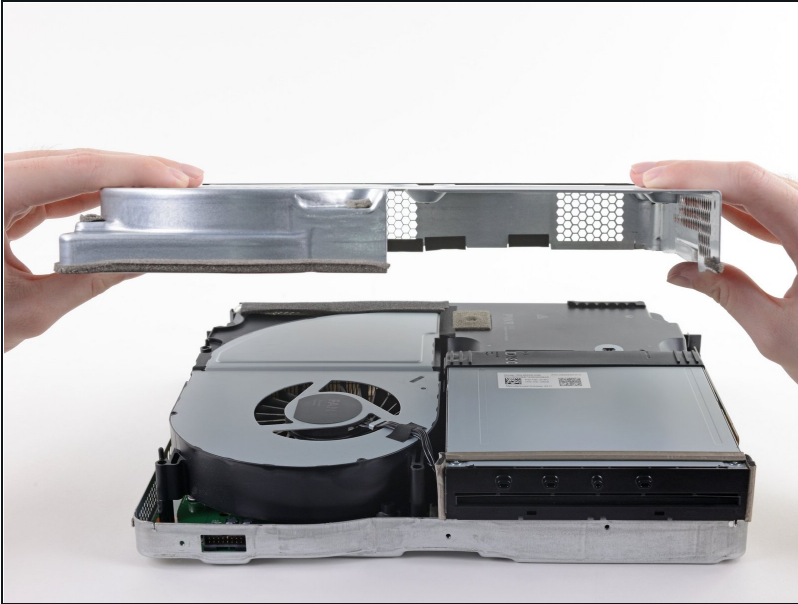
- Flip the console over.
 - ① Hold on to the lower plastic case because it is no longer attached to the metal case.
- Lift the lower plastic case up from the metal case and set it aside.

Step 14 — Remove the lower metal case screws



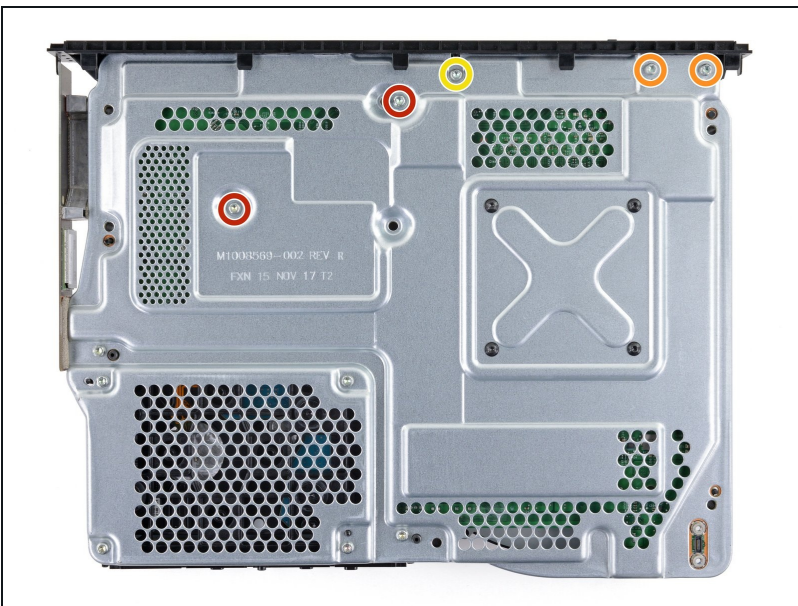
- Remove the two T10 Torx screws securing the lower metal case:
 - One 7.7 mm screw
 - One 11.4 mm screw

Step 15 — Remove the lower metal case



- Lift the lower metal case up off the upper metal case and internal components.
- ⓘ The disc drive may lift up with the lower metal case. Hold it down during this step.
- Set the lower metal case aside.

Step 16 — Unscrew the power supply and fan



- Flip the console over.
- ⚠ The disc drive is only attached to the motherboard by two cable connectors. Hold the disc drive when flipping the console over to avoid damaging it.
- Use a T10 Torx screwdriver to remove the following screws securing the power supply and fan to the upper metal case:
 - Two 11.4 mm screws
 - Two 11.4 mm screws
 - One 11.4 mm screw

Step 17 — Loosen the disc drive

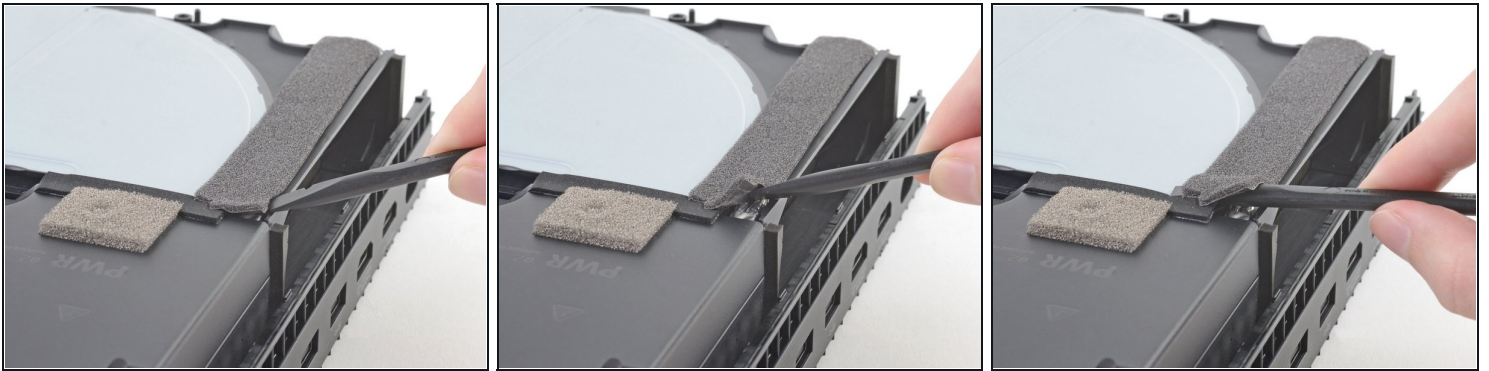


- Flip the console over.
- Lift the disc drive up so that its metal tab is unhooked from the power supply.

⚠ The disc drive is plugged into the motherboard. Don't bend the wires more than necessary to avoid damaging them.

- Place the disc drive on the upper metal case so that it sits over the hard drive. You'll need enough space to unplug the power supply from the motherboard.

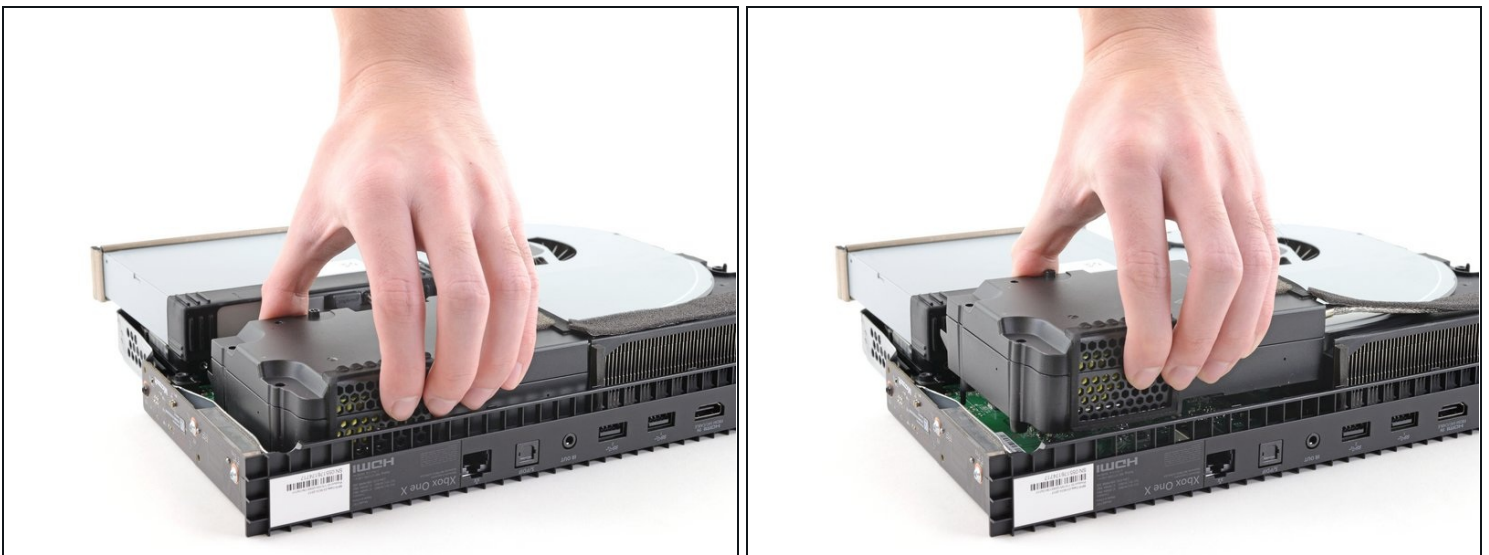
Step 18 — Unstick the foam tape near the power supply



- Insert the flat end of the spudger underneath the dark grey foam tape starting at the corner closest to the power supply and edge of the console.
- Lift up the corner.
- Slowly push the spudger through to the other side of the tape until you can see the flat end emerge.

⚠ Remove the spudger slowly. There are two grey cables underneath the foam tape. Try to avoid hitting them with the spudger so that you don't damage them.

Step 19 — Move the power supply



- Lift the power supply directly upward to unplug it from the motherboard.
- ① Move the disc drive further away from the power supply if you need more space.

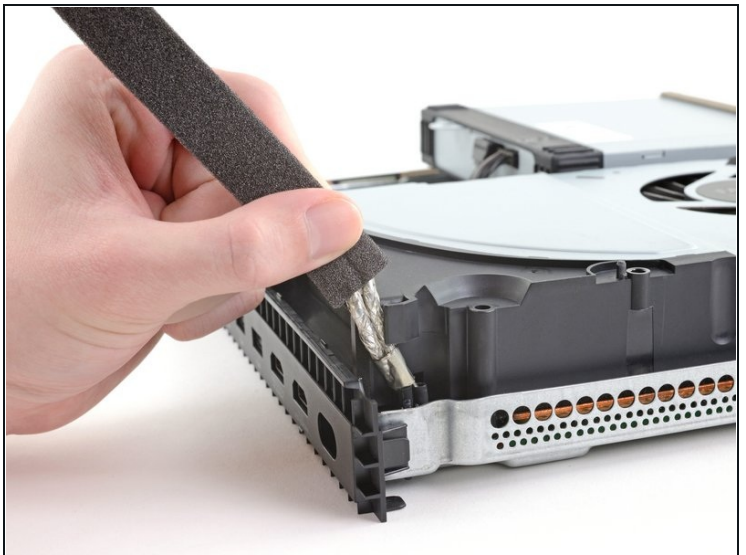
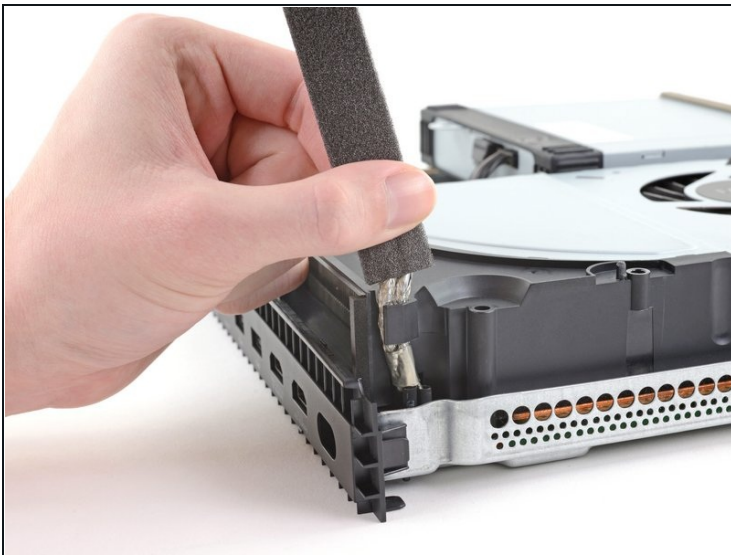
Step 20



- Lift the power supply so that the cables are at a 90 degree angle.

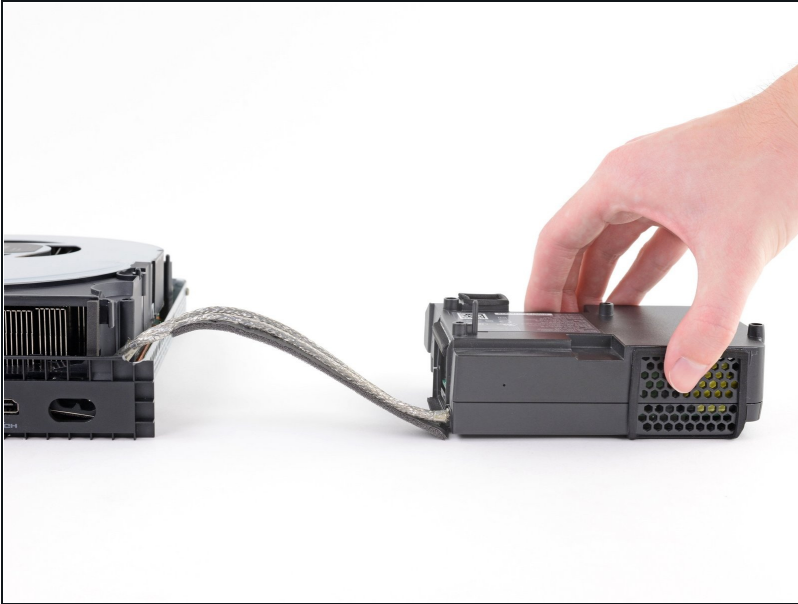
⚠️ Avoid pulling or bending the cables more than necessary to prevent damage.

Step 21



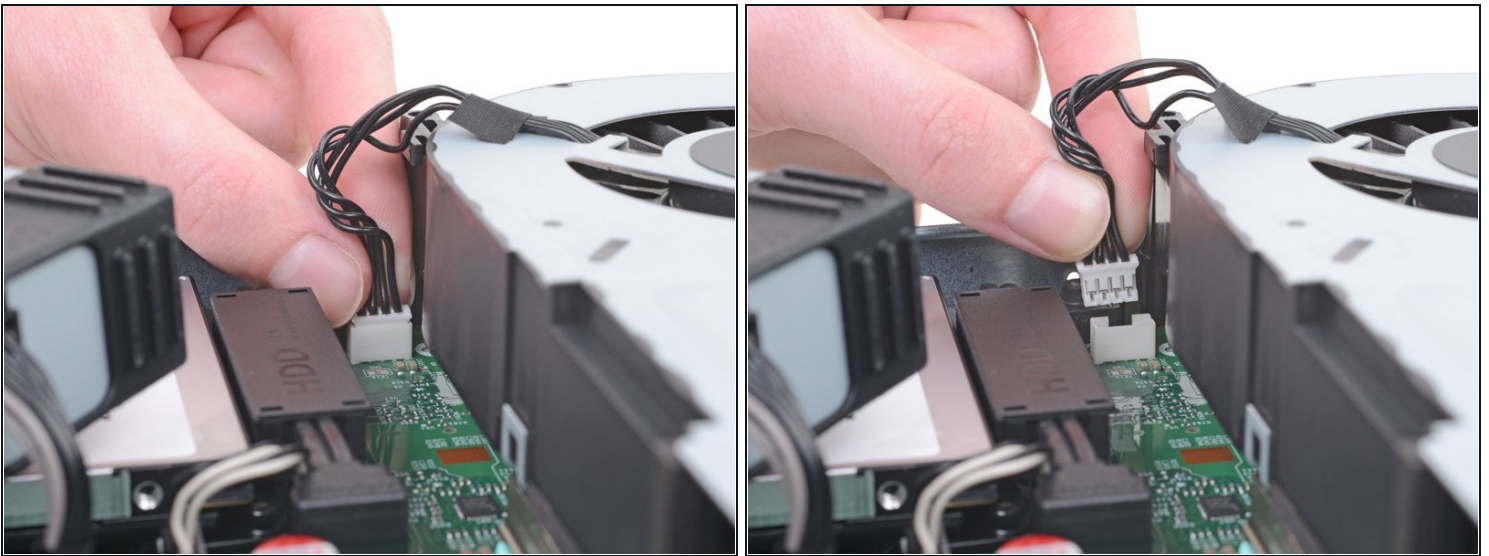
- While holding the power supply above the console, move the two grey cables out of the plastic hook on the fan case.

Step 22



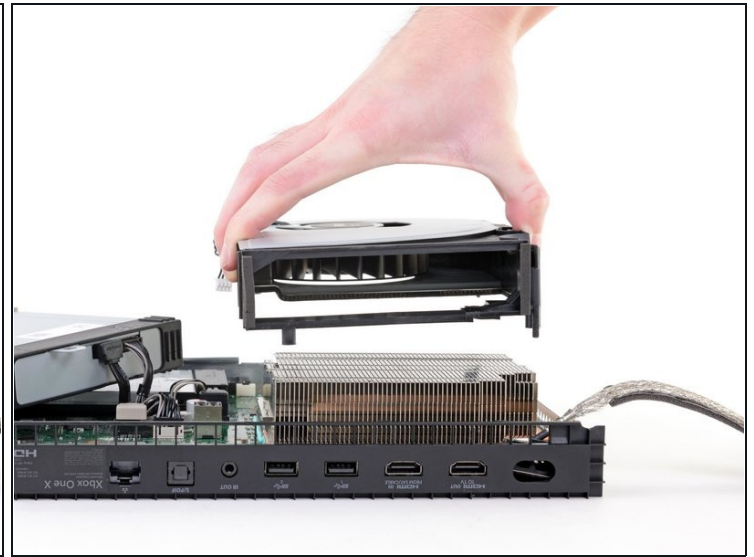
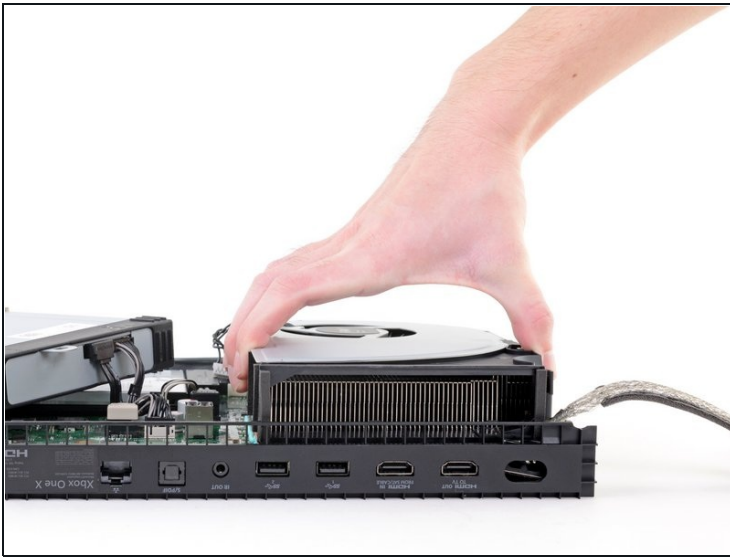
- Set the power supply on the table.

Step 23 — Unplug the fan from the motherboard



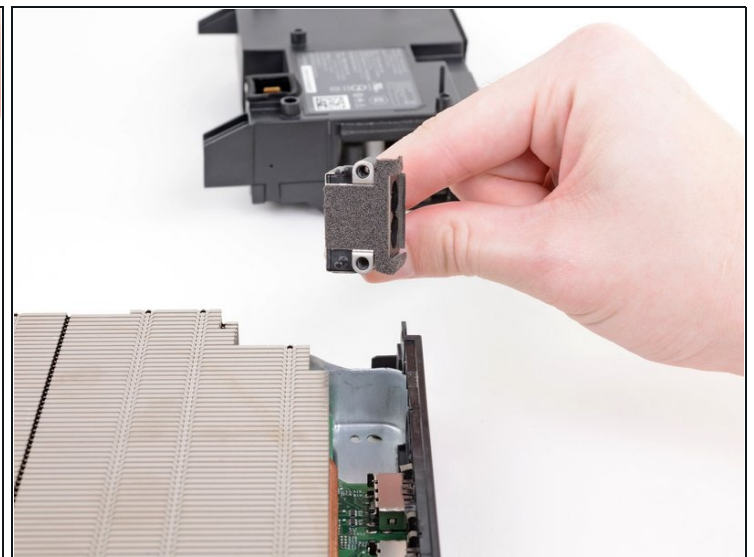
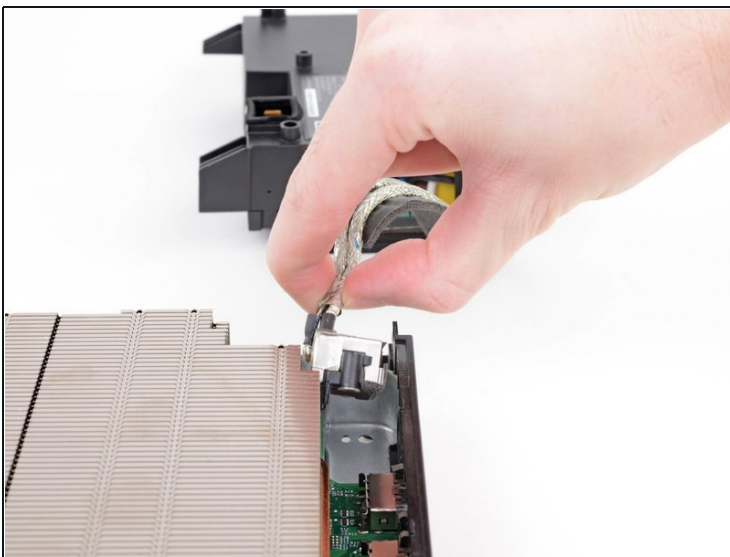
- Unplug the bundled cable connector connecting the fan to the motherboard by pulling directly upward.

Step 24 — Remove the fan



- Lift the fan case up to remove it from the console.

Step 25 — Remove the power supply socket from the case



- Lift the power supply socket out of the upper metal case.

To reassemble your device, follow these instructions in reverse order.

Take your e-waste to an [R2 or e-Stewards certified recycler](#).

Repair didn't go as planned? Try some [basic troubleshooting](#), or ask our [Xbox One X Answers community](#) for help.