



Huawei P40 Pro Battery Replacement

How to replace a worn-out or dead battery in your Huawei P40 Pro.

Written By: Dominik Schnabelrauch



INTRODUCTION

Use this guide to replace a worn-out or dead battery in your Huawei P40 Pro.

If your battery is swollen, [take appropriate precautions](#). For your safety, **discharge your battery below 25%** before disassembling your phone. This reduces the risk of a dangerous thermal event if the battery is accidentally damaged during the repair.

You'll need replacement adhesive to reattach components when reassembling the device.



TOOLS:

- [iOpener](#) (1)
 - [Suction Handle](#) (1)
 - [iFixit Opening Picks \(Set of 6\)](#) (1)
 - [iMac Opening Wheel](#) (1)
 - [Phillips #00 Screwdriver](#) (1)
 - [Spudger](#) (1)
 - [ESD Safe Tweezers Blunt Nose](#) (1)
-

Step 1 — Loosen the rear glass adhesive



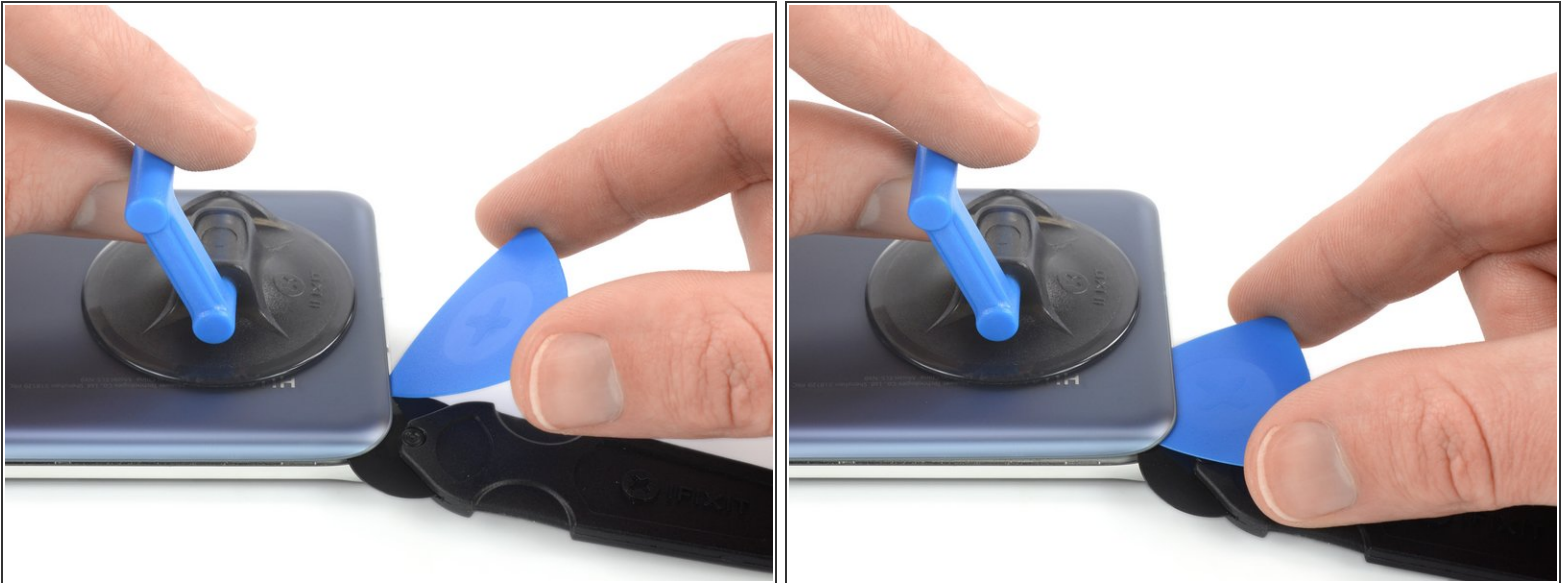
- Apply a [heated iOpener](#) to the rear glass to loosen the adhesive underneath. Apply the iOpener for at least two minutes.

Step 2 — Insert an opening wheel



- ❗ Since the rear glass of the Huawei P40 Pro is curved, we highly recommend to slice the adhesive with a softer plastic tool like the iMac opening wheel before working with opening picks to prevent the rear glass from shattering.
- Secure a suction handle to the bottom edge of the rear glass, as close to the curved edge as possible.
- ❗ If your rear glass is badly cracked, [covering it with a layer of clear packing tape](#) may allow the suction cup to adhere. Alternatively, [very strong tape](#) may be used instead of the suction cup. If all else fails, you can superglue the suction cup to the rear glass.
- Lift the back cover with the suction handle to create a small gap between the back cover and the frame.
- ❗ In case you have trouble creating a gap, apply more heat to further soften the adhesive. Follow the iOpener instructions to avoid overheating.
- Insert an iMac opening wheel into the gap.
- Slide the opening wheel to the bottom left corner to slice the adhesive.

Step 3 — Insert an opening pick



- Insert an opening pick into the gap between rear glass and frame at the bottom left corner of your phone to prevent the adhesive from resealing.


Step 4 — Cut the rear glass adhesive



- Reinsert the opening wheel at the bottom edge of the rear glass.
- Slide the opening wheel to the bottom right corner to slice the adhesive.
- Insert an opening pick underneath the bottom right corner of the rear glass, next to the opening wheel to prevent the adhesive from resealing.

Step 5



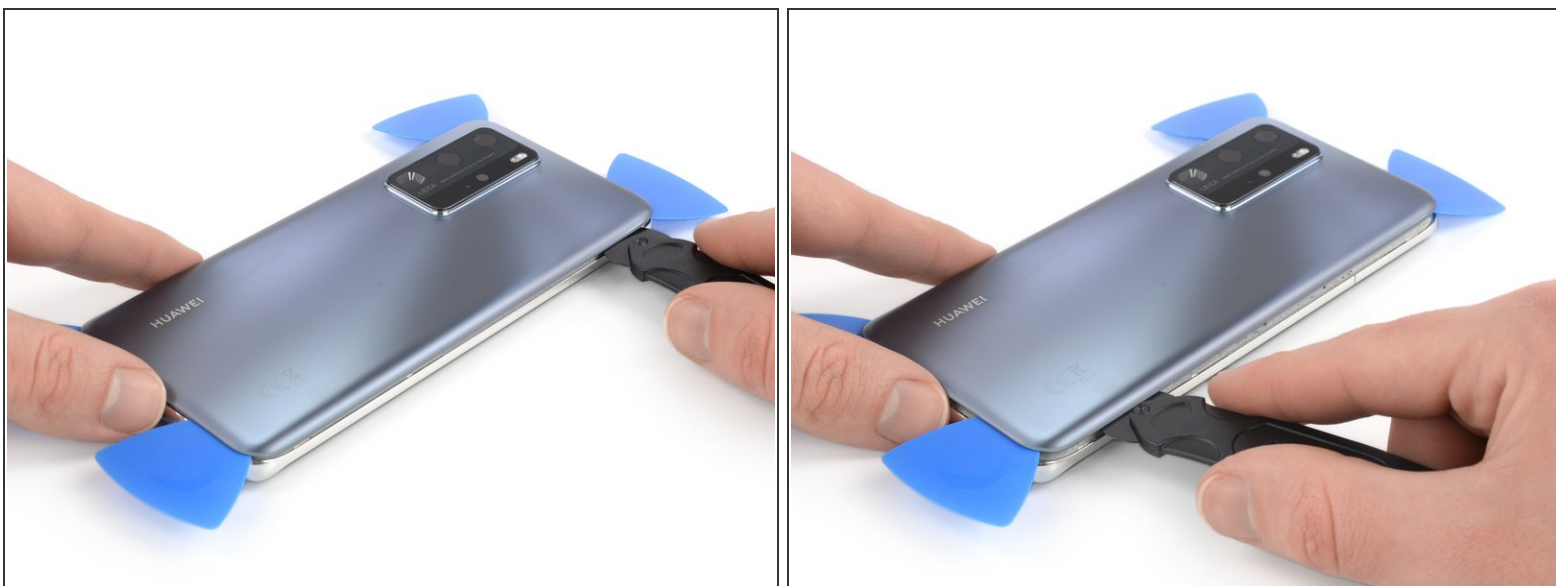
-  If the adhesive becomes hard to cut, it has most likely cooled down. [Use your iOpener](#) to reheat it.
- Insert the opening wheel underneath the bottom left corner of the rear glass.
 - Slide the opening wheel along the left edge of your Huawei P40 Pro to cut the adhesive.
 - Insert an opening pick underneath the top left corner of the rear glass, next to the opening wheel to prevent the adhesive from resealing.

Step 6



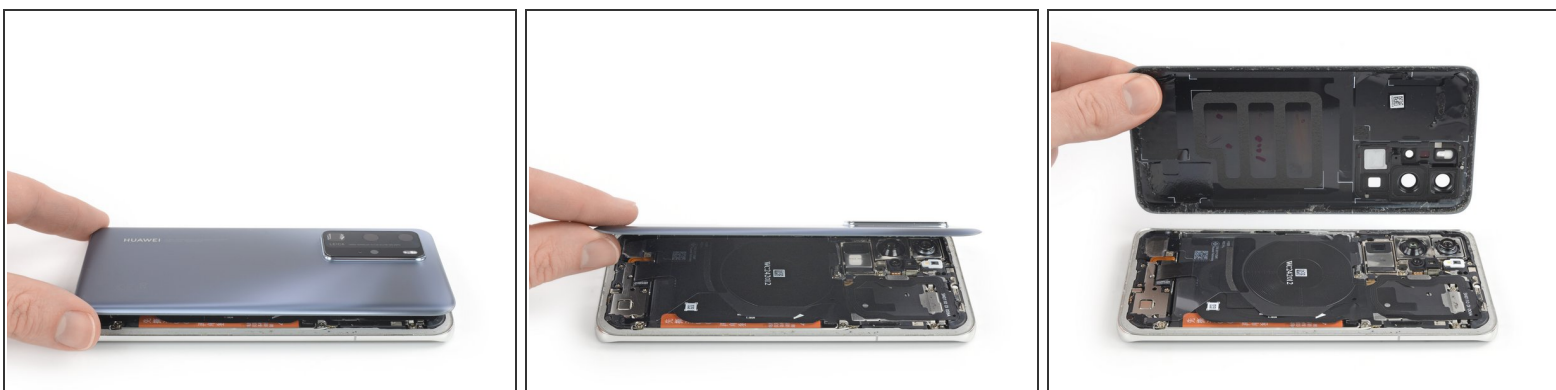
- Insert the opening wheel underneath the top left corner of the rear glass.
- Slide the opening wheel along the top edge of your phone to cut the adhesive.
- Insert an opening pick underneath the top right corner of the rear glass, next to the opening wheel to prevent the adhesive from resealing.

Step 7



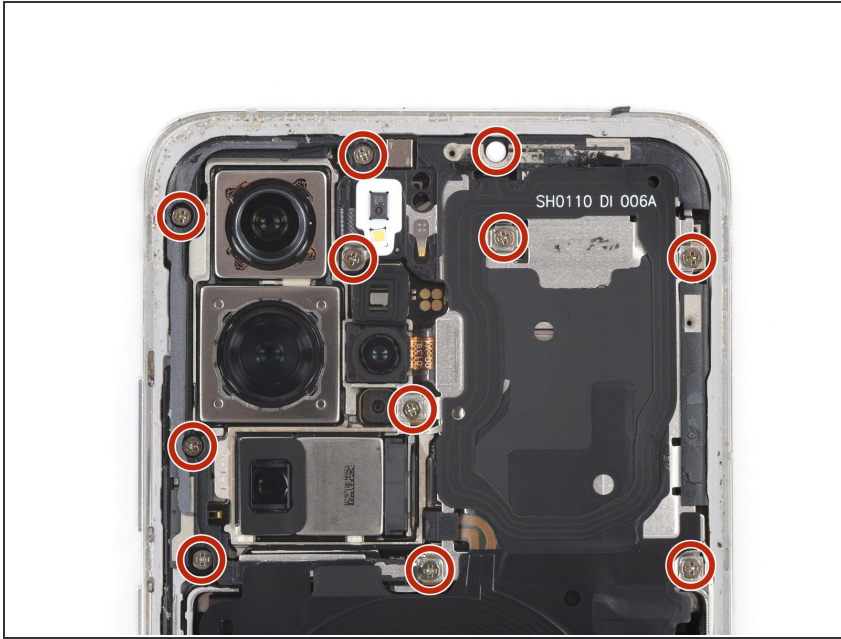
- Insert the opening wheel underneath the top right corner of the rear glass.
- Slide the opening wheel along the right edge of your phone to cut the remaining adhesive.

Step 8 — Remove the rear glass



- Remove the rear glass.

Step 9 — Remove the midframe screws



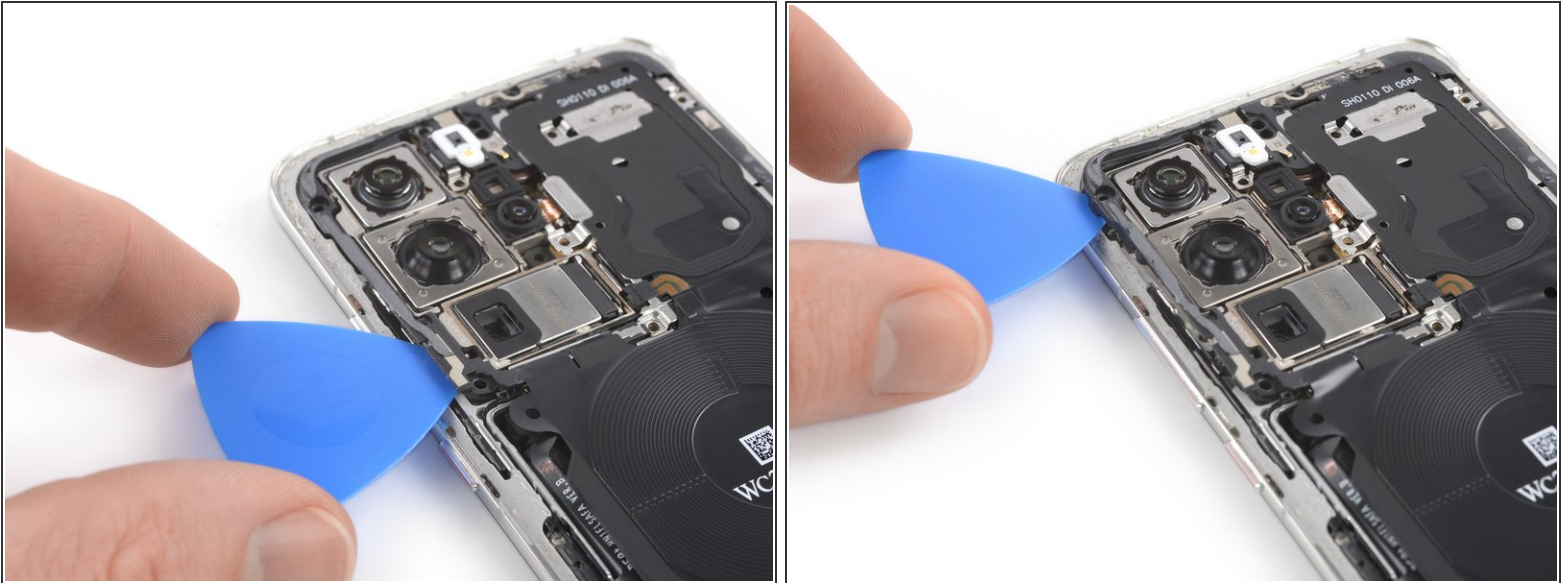
- Remove the eleven 4.5 mm-long Phillips #00 screws.

Step 10 — Peel off the protective foil



- Slide an opening pick underneath the bottom right corner of the protective foil.
- Use the opening pick to gently peel the protective foil off the daughterboard cover.
- Repeat the previous procedure to peel the bottom left protective foil corner off the speaker.

Step 11 — Pry up the midframe



⚠ The left side of the midframe is very fragile. Take your time prying it up to prevent breaking it.

- Slide an opening pick underneath the bottom left corner of the plastic midframe.
- Slide the opening pick along the left edge of the midframe to release the plastic clips holding it in place.

Step 12



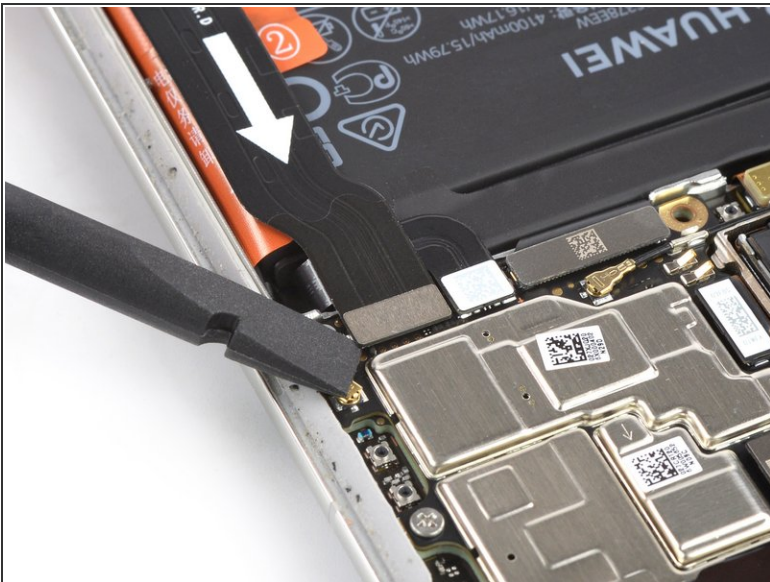
- Insert the tip of an opening pick at the top edge of the midframe next to the top left corner.
- Tilt the opening pick downwards to pop the plastic clips out of their sockets.
- Slide the opening pick along the top edge of the midframe to release the remaining plastic clips.

Step 13 — Remove the midframe



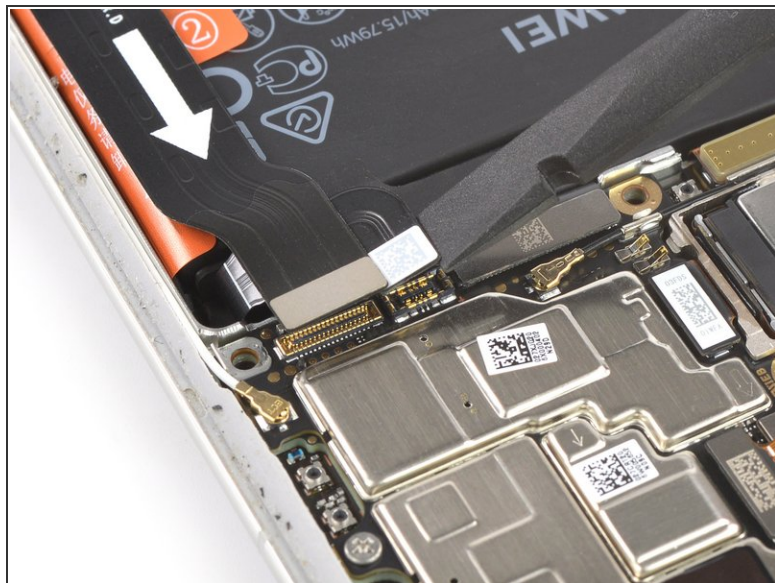
- Remove the midframe.

Step 14 — Disconnect the interconnect cable



- Use the flat end of a spudger to pry up and disconnect the interconnect cable.

Step 15 — Disconnect the battery cable



- Use the flat end of a spudger to pry up and disconnect the battery cable.

Step 16 — Disconnect the antenna cable



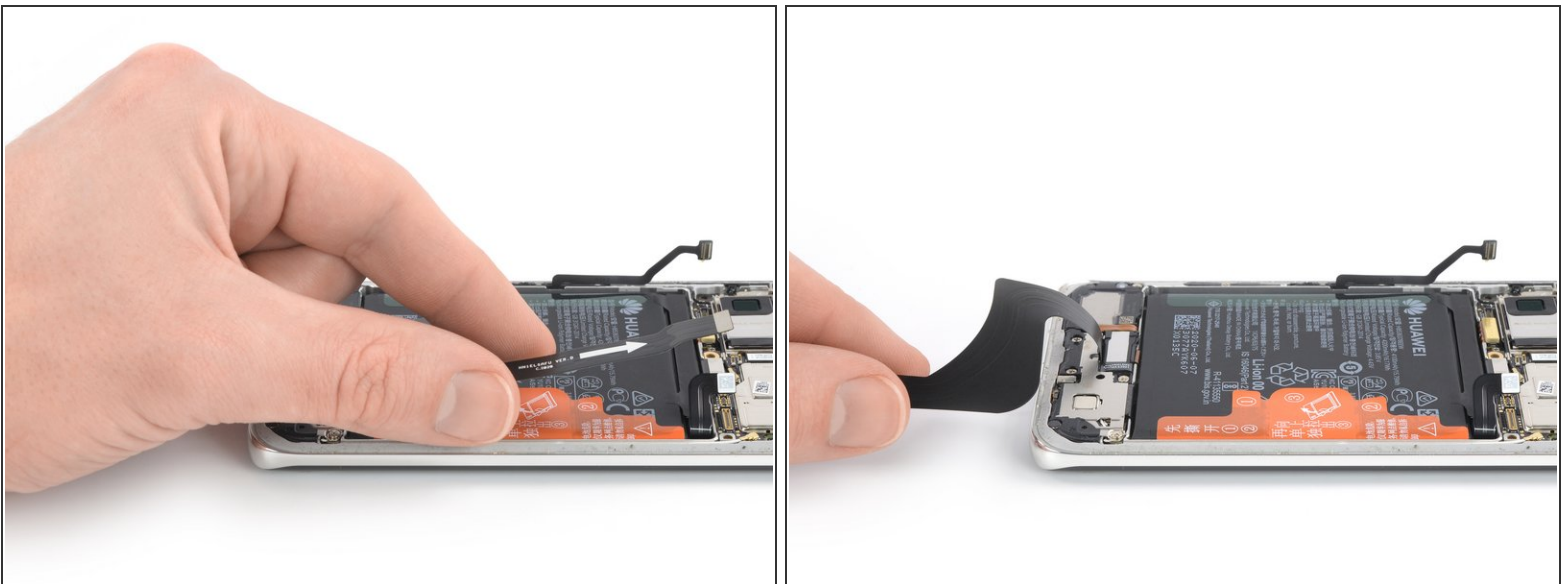
- Use a spudger to pry up and disconnect the antenna flex cable.

Step 17



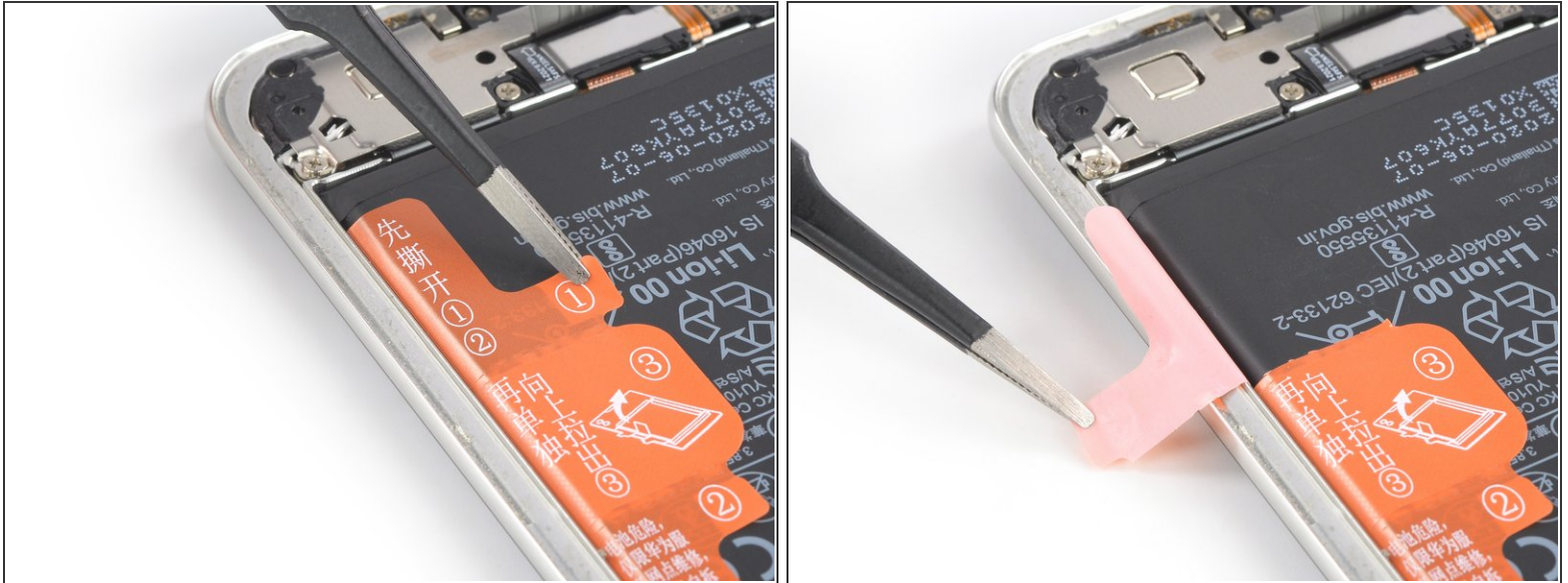
- Fold the antenna cable to the side to avoid damaging it during the battery removal.

Step 18



- Fold the interconnect flex cable toward the charging port in order to get access to the battery pull tabs.
- ① You might want to use a small piece of tape to temporarily stick this cable onto your working desk to avoid accidentally damaging it during the battery removal.

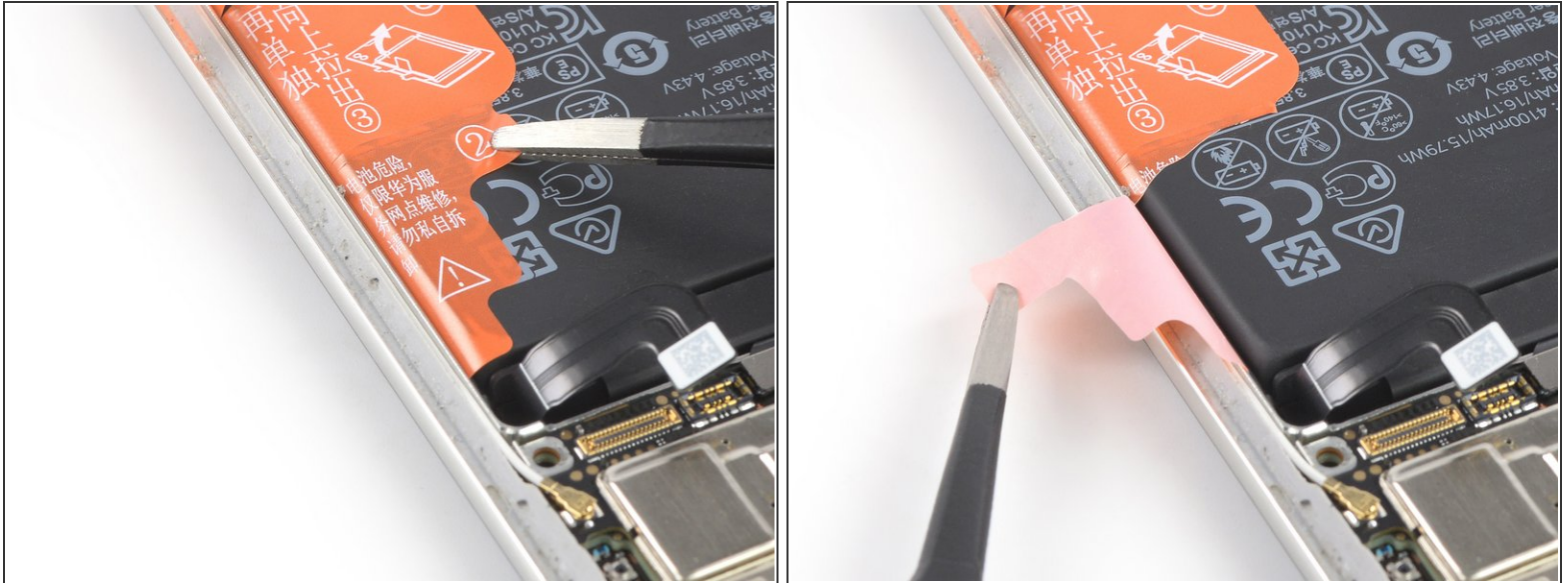
Step 19 — Peel the pull tabs off the battery



⚠ Take care not to puncture or bend the battery with your tool—a punctured or bent battery may leak dangerous chemicals or cause a thermal event.

- Use a pair of blunt nose tweezers or a clean fingernail to peel the orange adhesive strip labelled with a **1** off the battery.
- i** The orange adhesive tape will rip along a small perforated line.

Step 20



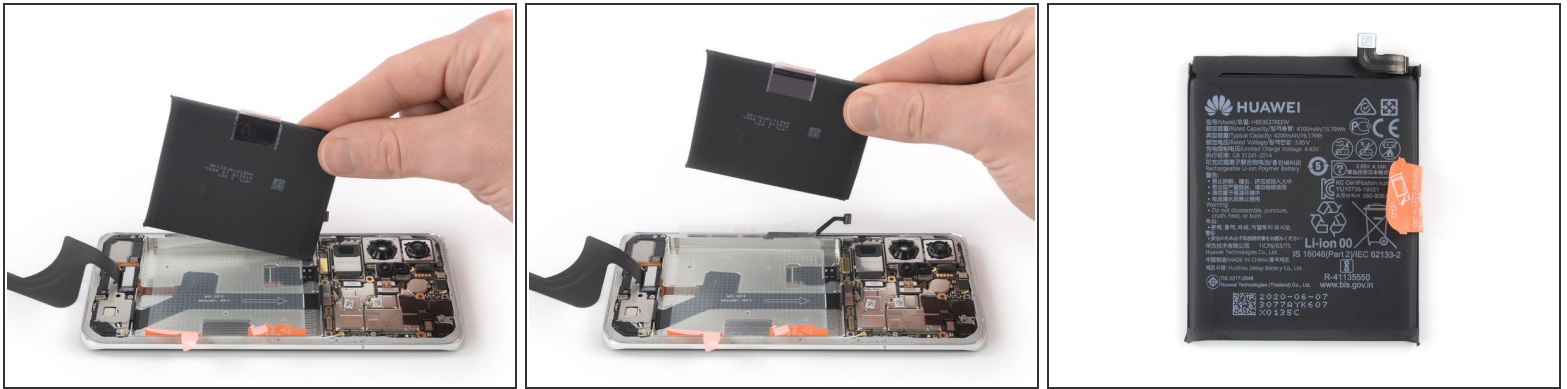
- Use a pair of blunt nose tweezers or a clean fingernail to peel the orange adhesive strip labelled with a **2** off the battery.
- ⓘ The orange adhesive tape will rip along a small perforated line.

Step 21 — Lift the battery out of its recess



- Peel the orange adhesive strip labelled with a **3** off the battery.
 - Pull up on the orange adhesive strip to lift the battery out of its recess and swing it up to an upright position.
- ⓘ Although these adhesive tabs are supposed to make the battery removal easier, they may require some force. In case you're having trouble removing the battery, you can apply [a heated iOpener](#) to the center of the display to loosen the adhesive underneath.

Step 22 — Remove the battery



- Peel the battery off the remaining adhesive.
- Remove the battery.
- ☑ During reassembly, temporarily reconnect the battery to the motherboard to help align it correctly. Disconnect the battery after it is seated.
- Peel the battery's adhesive sticker off the midframe.
- ⓘ This step is mandatory if you are replacing the display. It is highly recommended to use a fresh adhesive sticker when installing a new battery.

If possible, turn on your device and test your repair before installing new adhesive and resealing.

[Secure the new battery with pre-cut adhesive](#) or double-sided adhesive tape. In order to position it correctly, apply the new adhesive into the device at the places where the old adhesive was located, not directly onto the battery. Press the new battery firmly into place.

To reassemble your device, follow these instructions in reverse order. Apply new adhesive where necessary after cleaning the relevant areas with isopropyl alcohol (>90%).

For optimal performance, after completing this guide, [calibrate](#) your newly installed battery.

Take your e-waste to an [R2 or e-Stewards certified recycler](#).

Repair didn't go as planned? Try some [basic troubleshooting](#), or ask our [Answers community](#) for help.