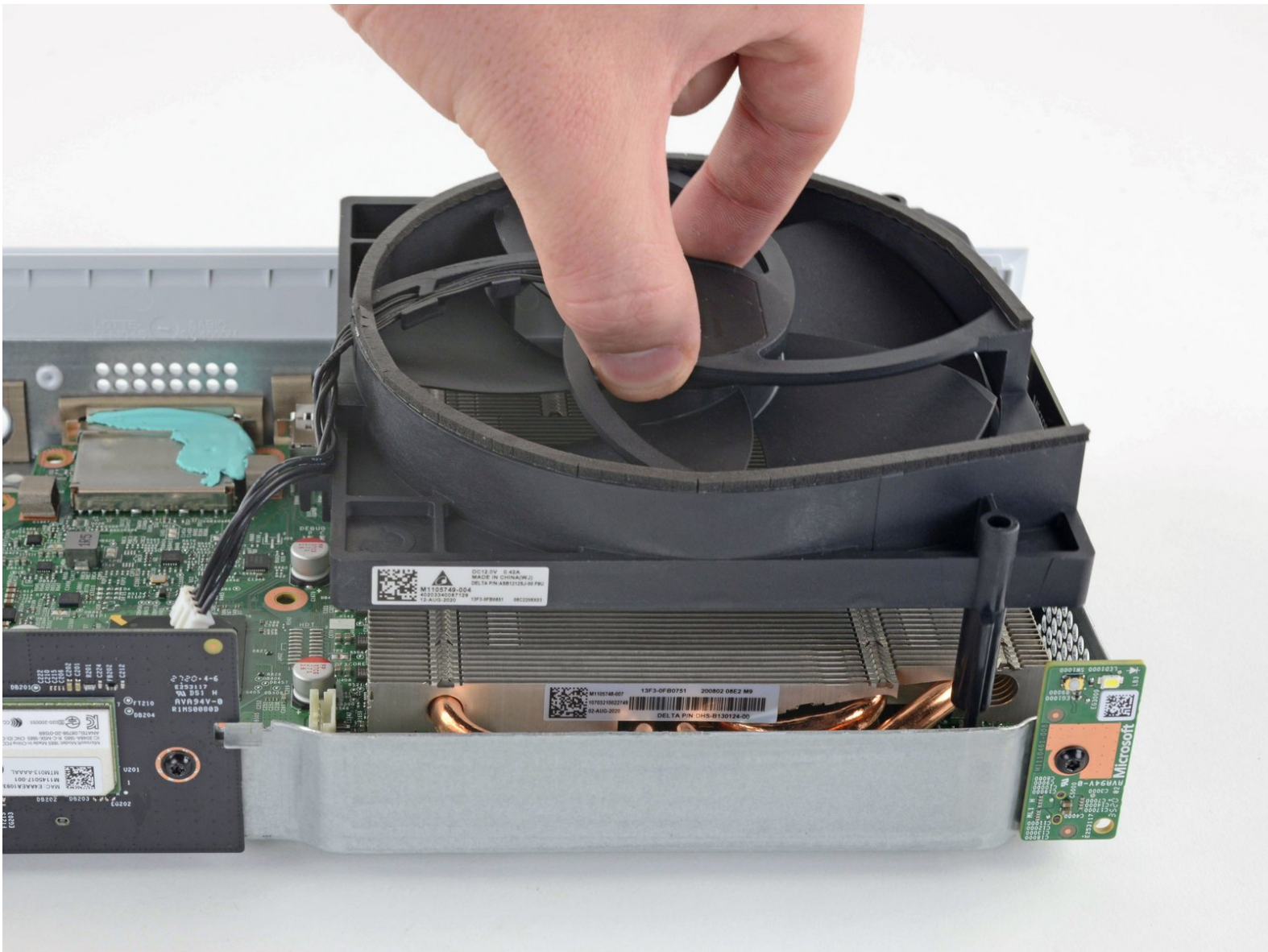




Xbox Series S Fan Replacement

How to remove and replace the fan on a Xbox Series S.

Written By: Robert Boyd



INTRODUCTION

Follow this guide to remove and replace the fan on a Xbox Series S.



TOOLS:

- [Tweezers](#) (1)
- [TR8 Torx Security Screwdriver](#) (1)
- [TR10 Torx Security Screwdriver](#) (1)



PARTS:

- [Xbox Series S Fan Assembly](#) (1)

Step 1 — Peel off the sticker coverings



⚠ Before you start this guide, turn off the Xbox and unplug any cables from it.

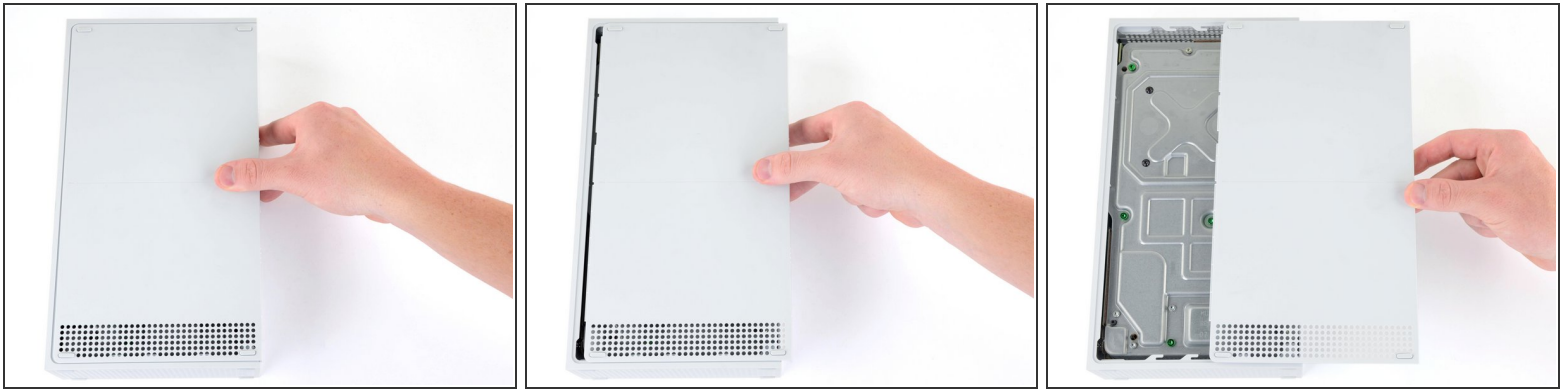
- Use tweezers to peel off the two white screw covers located on the bottom corners of the back panel.

Step 2 — Remove the back panel screws



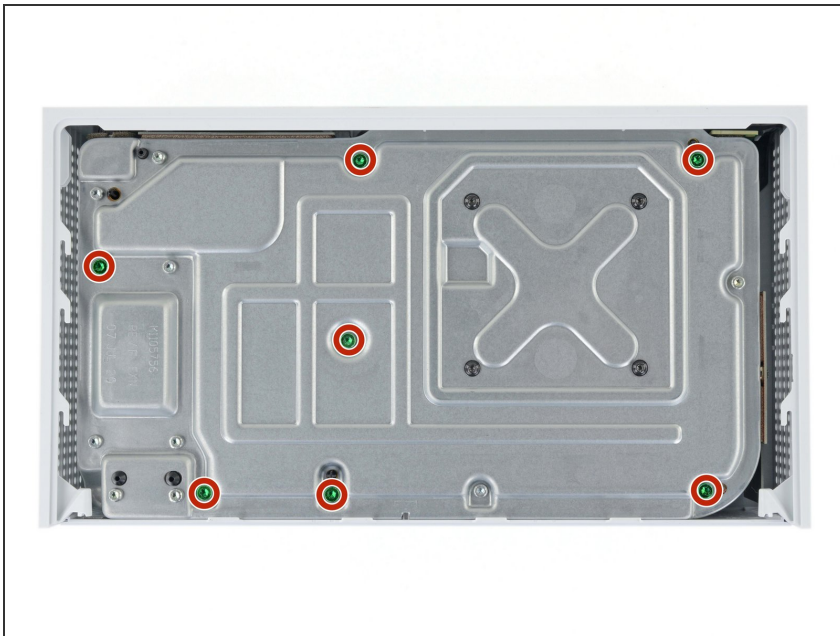
- Use a T8 Torx driver to remove the two 10 mm-long screws securing the back panel to the bottom panel.
- ⓘ Throughout this repair, [keep track of each screw](#) and make sure it goes back exactly where it came from.

Step 3 — Remove the bottom panel



- Slide the bottom panel horizontally toward the back of the console until it comes to a stop.
 - ❗ This slides the clips out of the slots on the plastic case.
- Lift straight up and remove the bottom panel from the plastic case.

Step 4 — Remove the plastic case screws



- Use a T10 Torx driver to remove the seven 51 mm-long screws securing the chassis to the plastic case.

Step 5 — Remove the plastic case



- With the bottom of the Xbox facing you, pull the two bottom-rear corners of the plastic case away from each other.
- As you pull the corners apart, slide the back panel towards the bottom of the device. This releases the back panel from the plastic case.
- ⓘ The back panel should now settle on top of the clips on the back of the plastic case.
- ⓘ The back panel is permanently attached to the aluminum chassis.

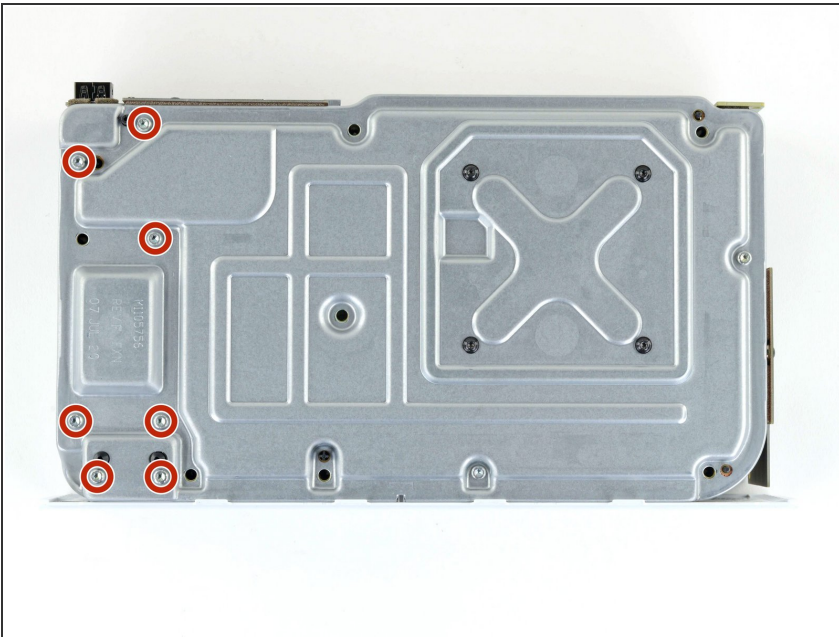
⚠ Do not attempt to fully remove the chassis from the plastic case with this technique. You may risk breaking your case.

Step 6



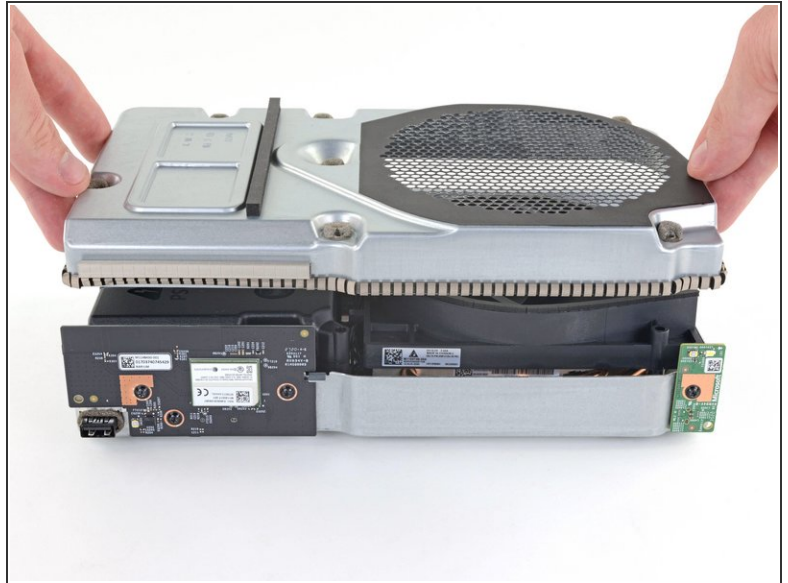
- Pull the bottom-left corner away from the chassis while swinging the chassis away from the plastic case.
- ❗ You may need to lift the chassis to free it from the clips on the bottom-front of the plastic case during this process.
- Remove the plastic case from the chassis.

Step 7 — Remove the power supply screws



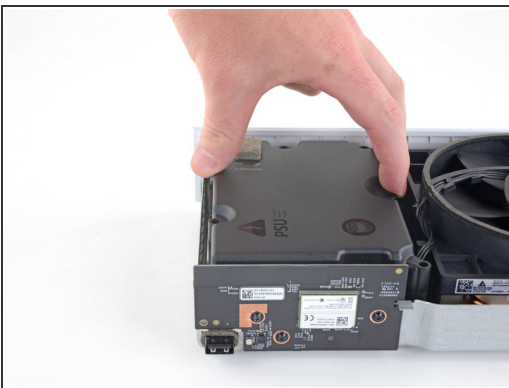
- Use a T10 Torx driver to remove the seven 11.3 mm-long screws securing the power supply to the chassis.

Step 8 — Remove the upper chassis



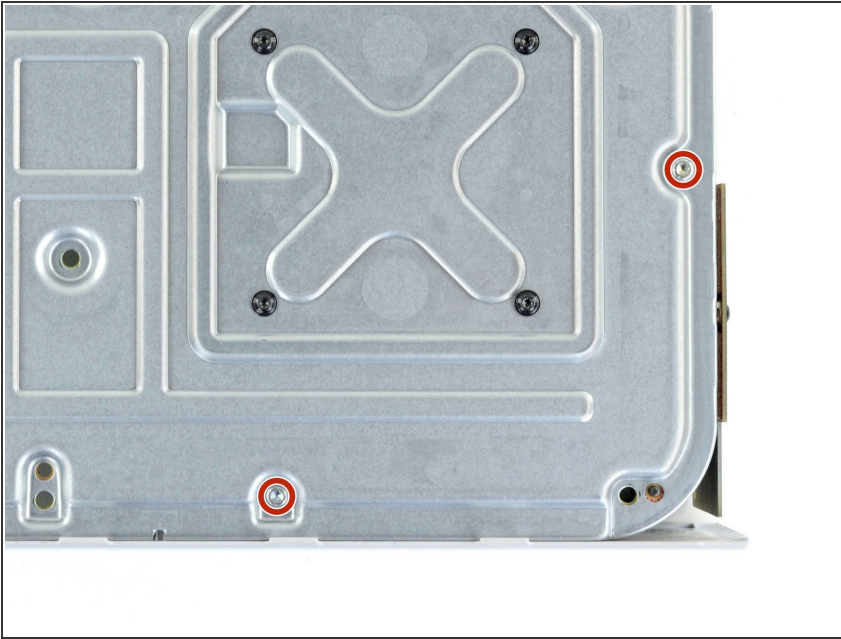
- Flip the device over.
- Lift the upper chassis straight up to remove it.

Step 9 — Remove the power supply



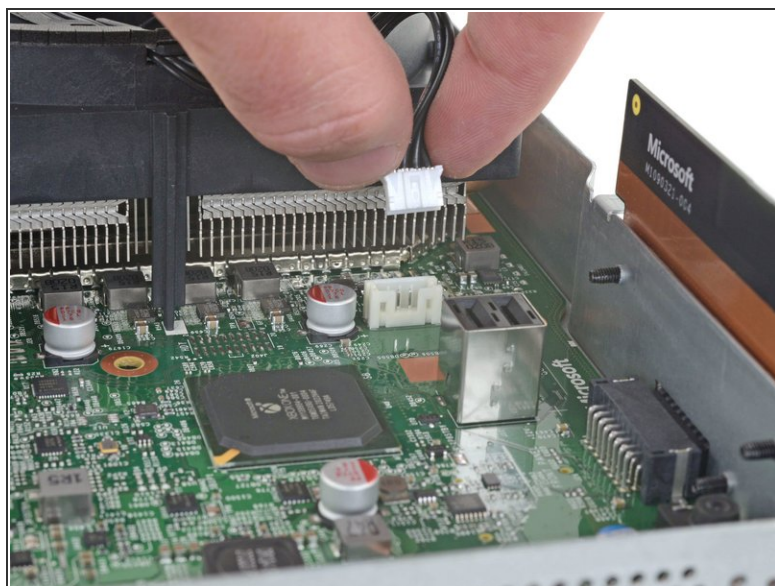
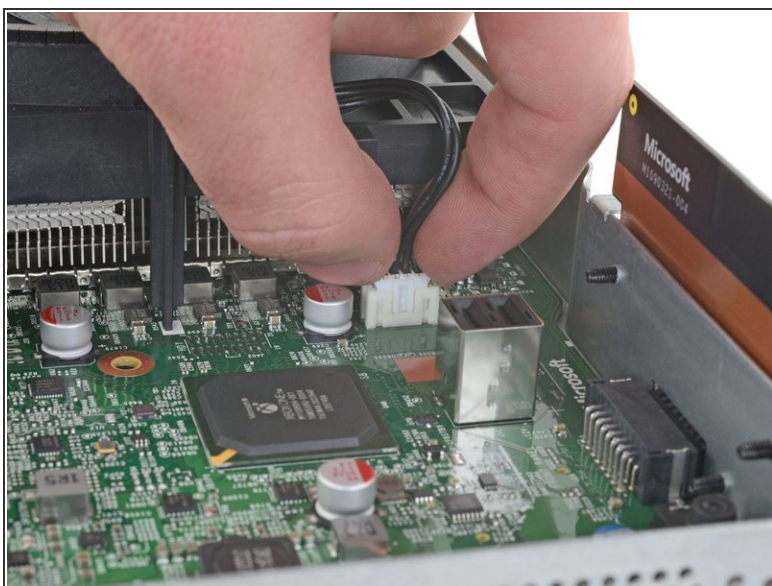
- Lift the power supply straight up to disconnect it from the motherboard.
- Remove the power supply.

Step 10 — Remove the fan screws



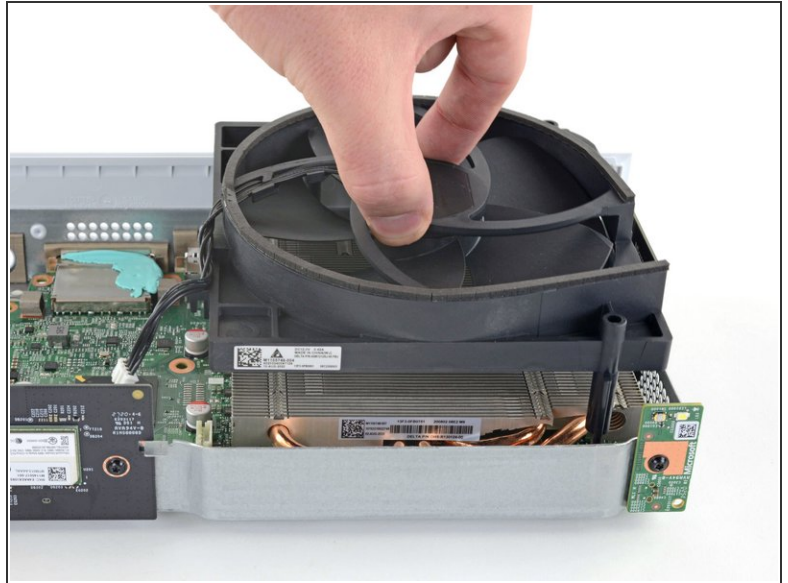
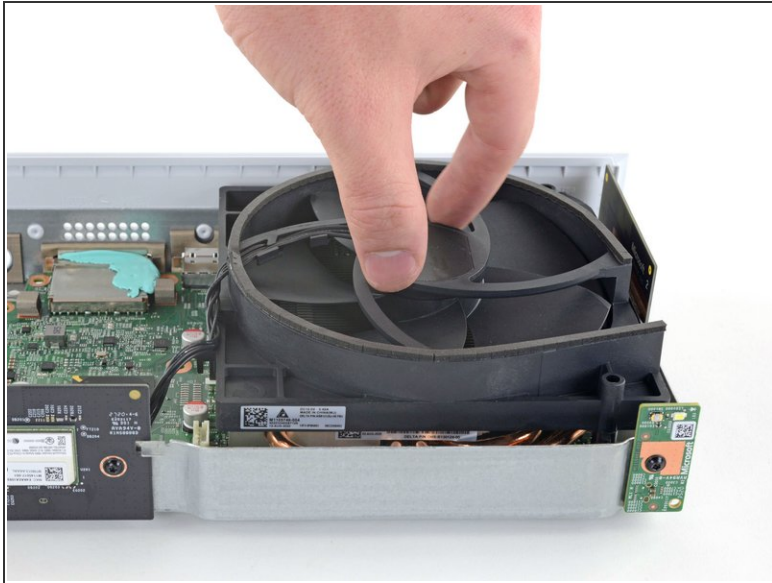
- Use a T10 Torx driver to remove the two 11.3 mm-long screws securing the fan to the chassis.

Step 11 — Disconnect the fan



- Flip the device over.
 - ⚠ Take care when flipping the chassis over because the fan is now loose.
- Use your fingers to pull and disconnect the fan connector from its motherboard socket.
 - ⚠ Take care not to pull on the wires when disconnecting the fan to prevent breaking the connector.
 - ⓘ This connector may be difficult to remove. A good method to remove it is to shimmy the connector up and out of its socket with a spudger.
 - ⓘ You may be able to remove this connector without removing the power supply with a pair of needle-nose pliers.

Step 12 — Remove the fan



- Lift the fan straight up to remove it from the motherboard.

To reassemble your device, follow these instructions in reverse order.

Take your e-waste to an [R2 or e-Stewards certified recycler](#).

Repair didn't go as planned? Try some [basic troubleshooting](#), or ask our [Answers community](#) for help.