



# Frigidaire FFHB2750TD6 Water Filter Replacement

If your Frigidaire french door refrigerator...

Written By: Blake Mueller

ELECTROLUX HOME PRODUCTS ELECTROLUX CANADA CORP.  
CHARLOTTE, NC, 28262 MISSISSAUGA, ONT.

**MADE IN MEXICO**

Model No./No de Modele: FFHB2750TD6

Serial No./No de Serie: 4A93226408

Manufactured/Fabrique: 08/19

Electrical Rating/Caract. Electriques:

Amps- 3.30 Volts- 115 Hertz- 60

Supply Type/Alimentation: ~

Defrosting Power Input: 570

Blowing Agent / Agent Gonflant: R245FA

Refrigerant/Frigorigene: R134a

Charge/Charge: 4.75 oz. 135 g.

Optional Ice Maker Kit/Machine a glacons (opt): IMK0028A

Model Type/Modele: JBND-27



Tested and certified by NSF International against  
NSF/ANSI Standard 372 in models  
22,26,28" FDBM Refrigerator, Icemaker System



Patents Pending/Brevets en instance

## Cabinet Dimensions - Dimensions extérieures\*

Height (top of hinge cover with rollers)	69 7/8"
Hauteur (dessus du couvre-charnière, roulettes comprises)	177.5 cm
Height (top of door with rollers)	70"
Hauteur (dessus de la porte, roulettes comprises)	177.8 cm
Width	35 5/8"
Largeur	90.5 cm
Depth (including doors without handles)	33"
Profondeur (portes comprises, sans les poignées)	83.8 cm

\*Dimensions may vary 1/4 inch  
\*La dimension peut varier 1/4 de pouce

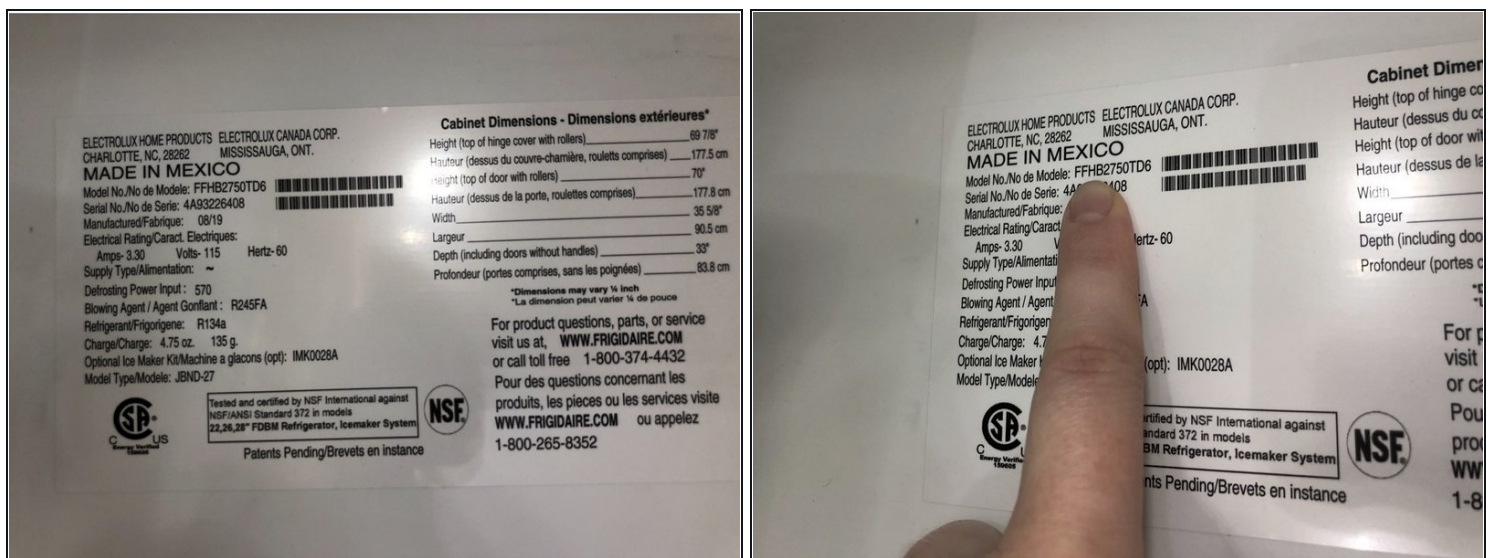
For product questions, parts, or service  
visit us at, [WWW.FRIGIDAIRE.COM](http://WWW.FRIGIDAIRE.COM)  
or call toll free 1-800-374-4432

Pour des questions concernant les  
produits, les pieces ou les services visitez  
[WWW.FRIGIDAIRE.COM](http://WWW.FRIGIDAIRE.COM) ou appelez  
1-800-265-8352

# INTRODUCTION

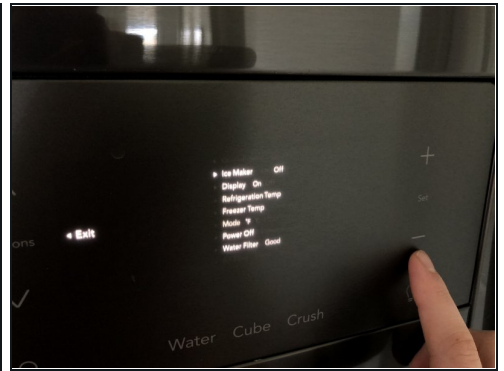
If your Frigidaire french door refrigerator Model number FFHB2750TD6 is telling you to replace the water filter then this is the guide for you. This fridge's water filter plays a key role in filtering out your drinking water to ensure it is clean and safe for everyone. This fridge model, in particular, will notify you when your water filter needs replacement which brings a lot of ease to customers. Before beginning this guide be sure to turn off the ice maker and remove items located underneath the water filter. Water may leak out during replacement so removing items and placing a towel beneath the water filter makes for an easy clean-up.

## Step 1 — Water Filter



- On the right inner side of the fridge, you will find the model number.
- Identifying the correct model number will ensure the proper purchase of the new water filter.

## Step 2



- Click options on the control panel on the front of the left door.
  - Here it will say ice maker is on, click the minus button to turn it off.
- ⓘ You will hear a beeping sound to ensure that the ice maker is turned off.

## Step 3



- The water filter is in the upper right corner of the fridge.



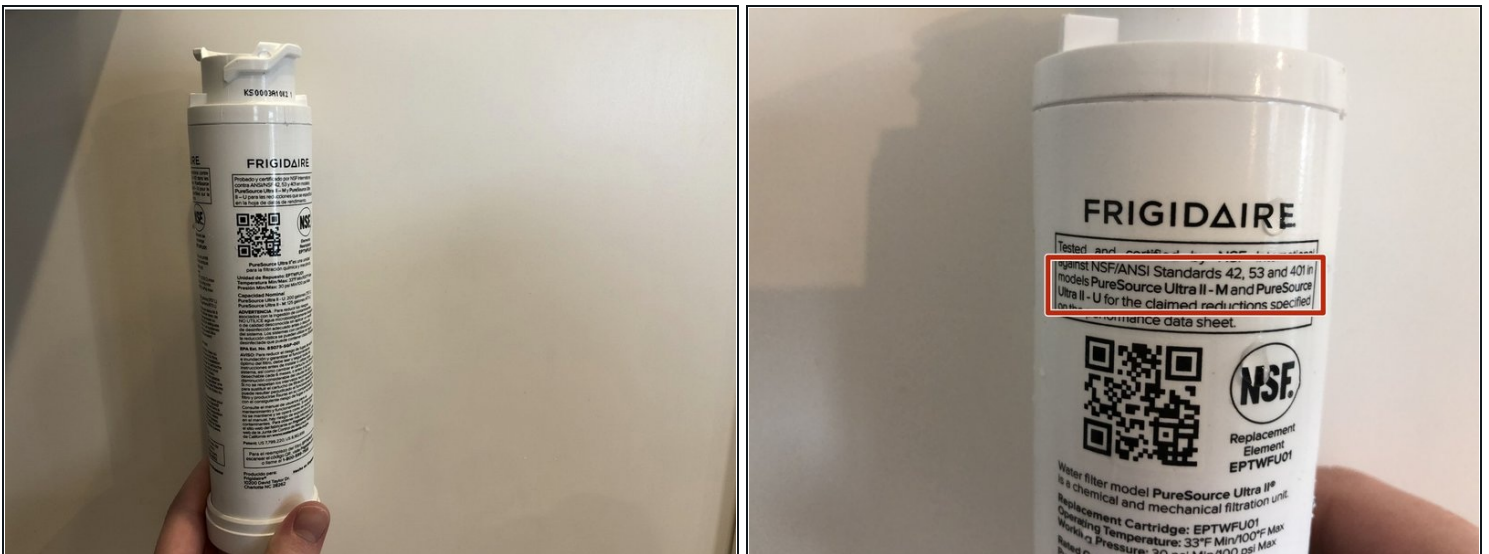
## Step 4



- To remove the water filter turn it to the right until you feel it detach.
- Then pull the filter straight out slowly from its slot.

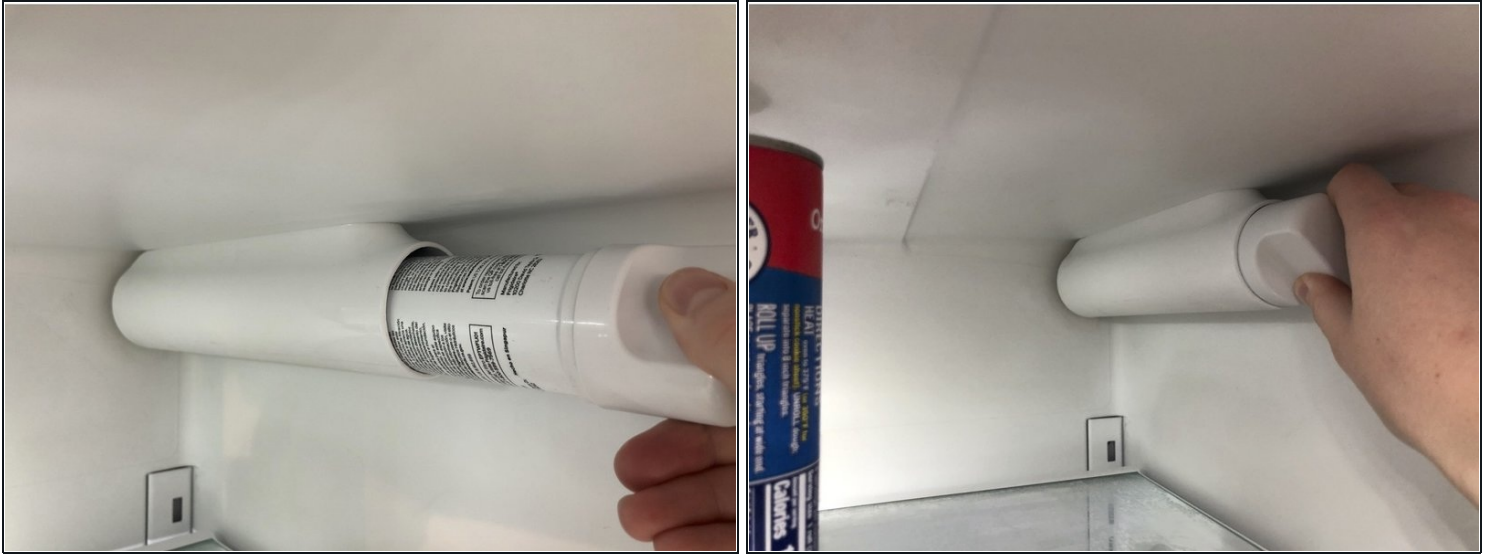
⚠ Water may drip from the filter upon removal. Putting a towel underneath and removing products from that area will ensure an easy clean-up.

## Step 5



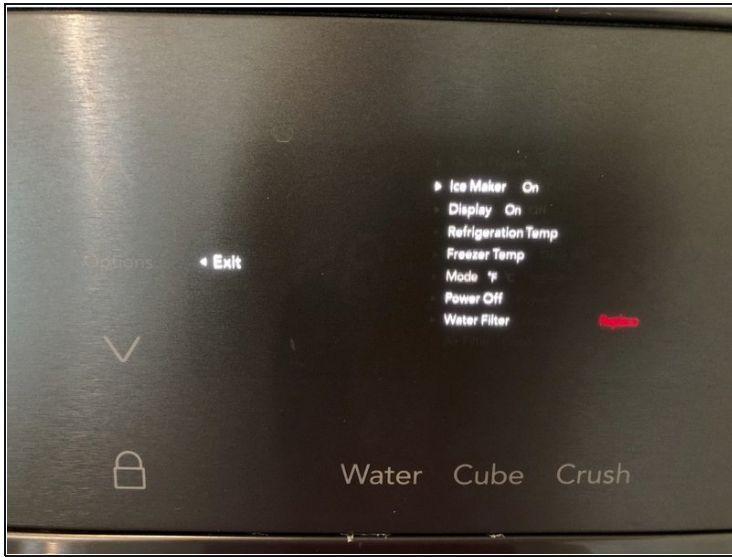
- Once the filter is removed, identify the model number on it.
- ① The model number will ensure you buy the correct replacement at the store.

## Step 6



- Upon getting the new filter from the store install it into the fridge.
- Insert the filter straight into its designated slot.
- Twist the filter to the right until you feel and hear it click into place.

## Step 7



- To turn the icemaker back on click the options button and hit the minus button, it will beep indicating it is back on.
- To reset the water filter you hit the down arrow button beneath the options button and go down to "water filter".
- Press and hold the set button above the minus button on the right side, it will then say "good" next to the water filter.
- Press options again to return to the main screen.

---

To reassemble your device, follow these instructions in reverse order.