



Power Mac G4 Cube Teardown

Written By: Chris Green



INTRODUCTION

The infamous Power Mac G4 Cube, Apple's original failed attempt at a compact G4-based Macintosh. Released in 2000 at a cost of \$1599, the Cube was considered too expensive, and too slow. The Cube, unlike most computers, uses passive cooling, which means no fan. While quiet, it was a big mistake on Apple's part, because the G4 processors run very hot!

The Cube boasted a 450MHz or 500Mhz G4 CPU; not particularly fast given its 1Ghz Pentium III contemporary. The Cube is virtually silent, aside from the original 5400 RPM hard-drives. After a single year of production, Apple put the cube "on ice". But it lives on in infamy as a popular candidate for Macquariums and as a coveted design piece. An internal fan hookup in the form of a 12V, 2-pin connector is available but was never utilised by Apple. If you want, you can buy a fan, connect it, and figure out a place to fit it; this is a popular mod to cool overheating Cubes.

Conceptually, it was replaced by the Mac Mini in 2005, 5 years later.

TOOLS:

- [Phillips #0 Screwdriver](#) (1)
 - [T10 Torx Screwdriver](#) (1)
 - [T8 Torx Screwdriver](#) (1)
-

Step 1 — Power Mac G4 Cube Teardown



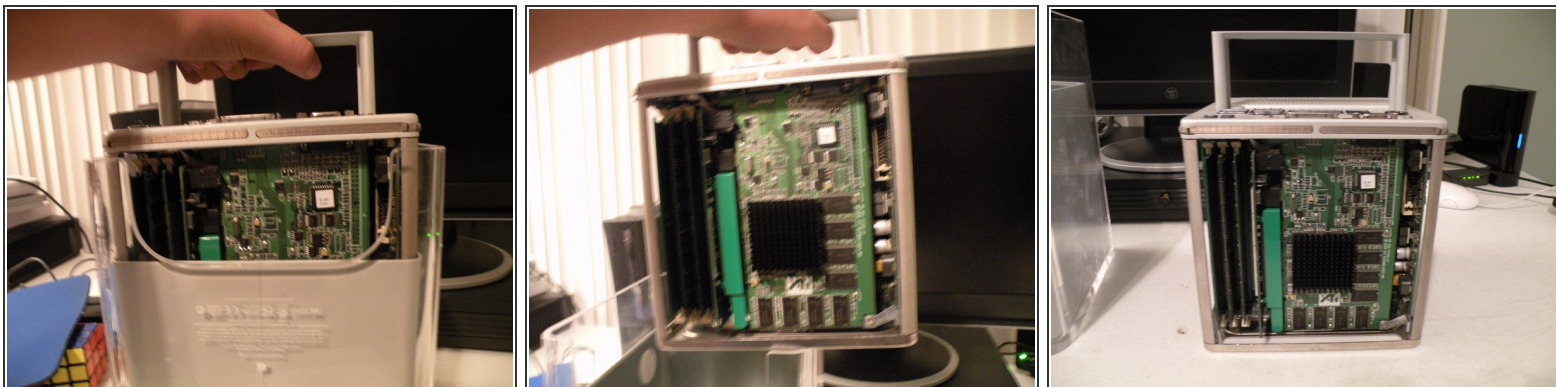
- The Cube!

Step 2



- To Start The Dissassembly, Flip The Cube Upside-Down, and unplug it.
- Next, push on the handle, it should pop up.

Step 3



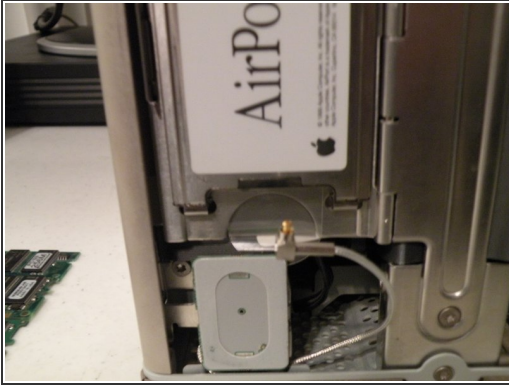
- Now, pull up on the cube by the handle, all of the guts should come out.
- As you might notice, the cube's guts only go in one way, the ports facing the back of the enclosure

Step 4



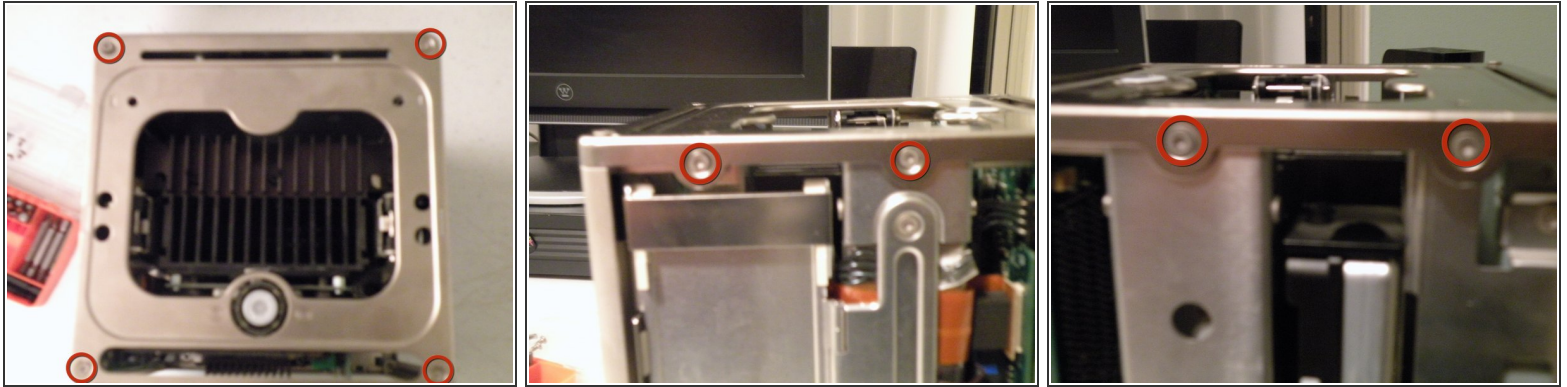
- Removing the Ram
- Start by flipping the cube so that the side with the graphics card is facing you, you may want to push the handle back in.
- There are 3 RAM Slots, they are Standard PC100 Ram. The cube can support up to 1.5GB of ram, that's a 512MB Stick In All 3 Slots.
- Remove the ram, just like any other kind of ram.

Step 5



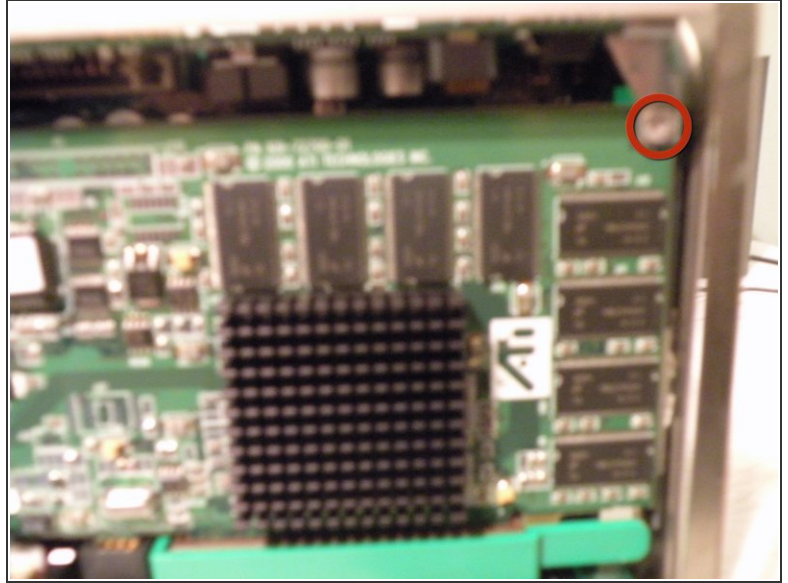
- AirPort Card
- The Cube Uses the standard PCMCIA 802.11b AirPort card commonly found in macs from 1999-2004
- Flip the cube to the side with the airport card attached. Remove the antenna cable, then grasp the card by the plastic tab, and pull it out of it's socket.

Step 6



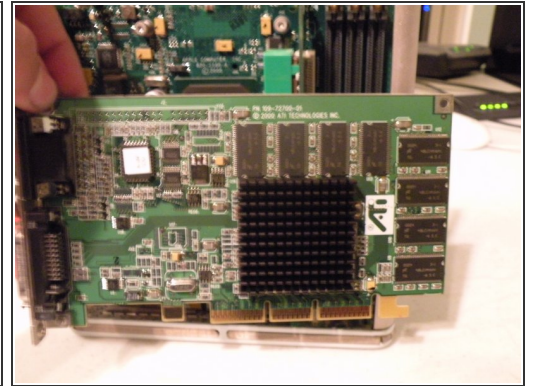
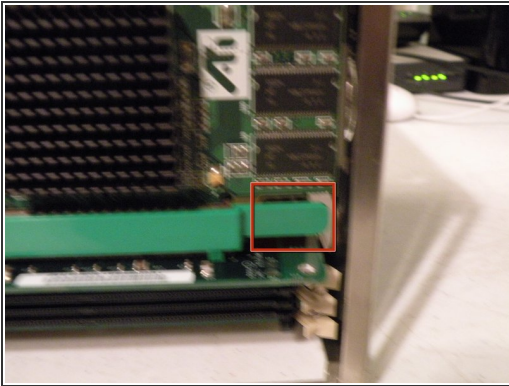
- The Graphics Card
- The Cube came standard with a Mac ATI Rage 128 Pro 16MB AGP Card. ATI Radeon (32MB) and nVidia GeForce 2MX (32MB) cards were BTO options.
- ⓘ There are few Cube compatible mac cards, due to the cube's small size, heat dissipation limitations, and limited power supply capabilities.
- Remove these T10 screws:
- Then, pull the top piece of metal off of the computer,
- ⚠ There is a small fragile cable coming from the top if the cube for the power button/LED, before fully removing the piece, unplug this cable from the logic board.

Step 7



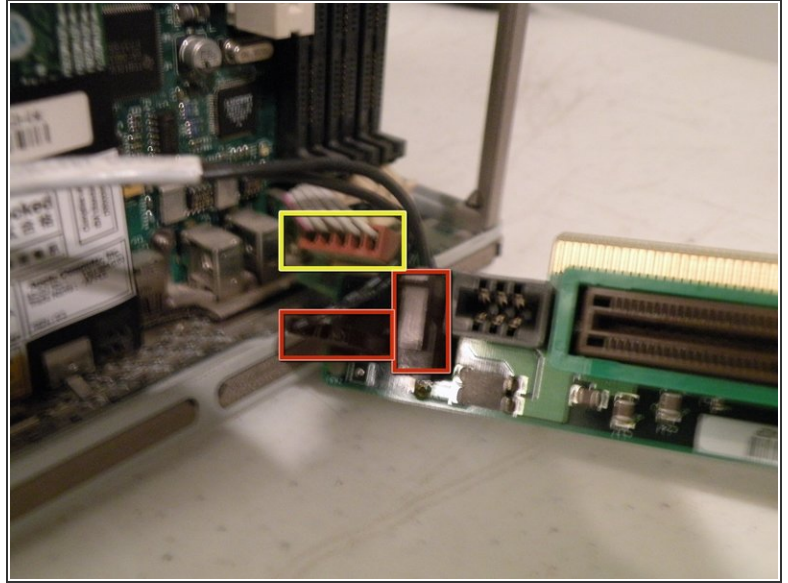
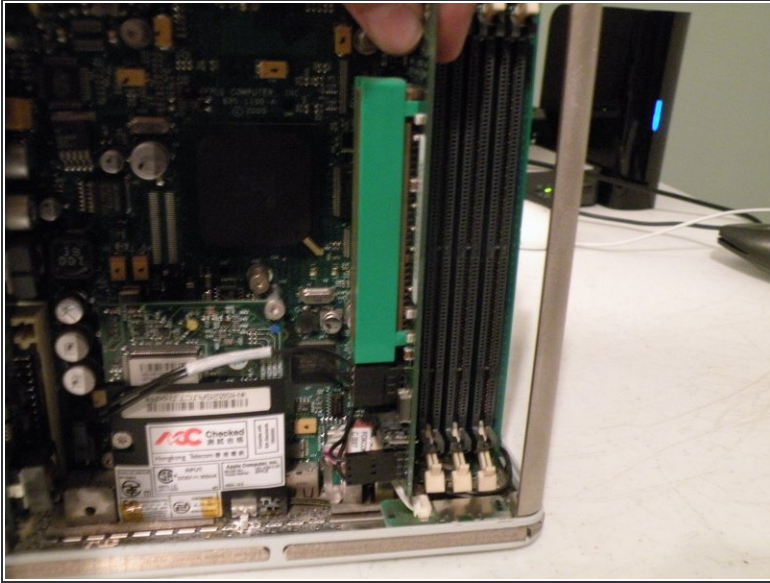
- And These T10 Screws...

Step 8



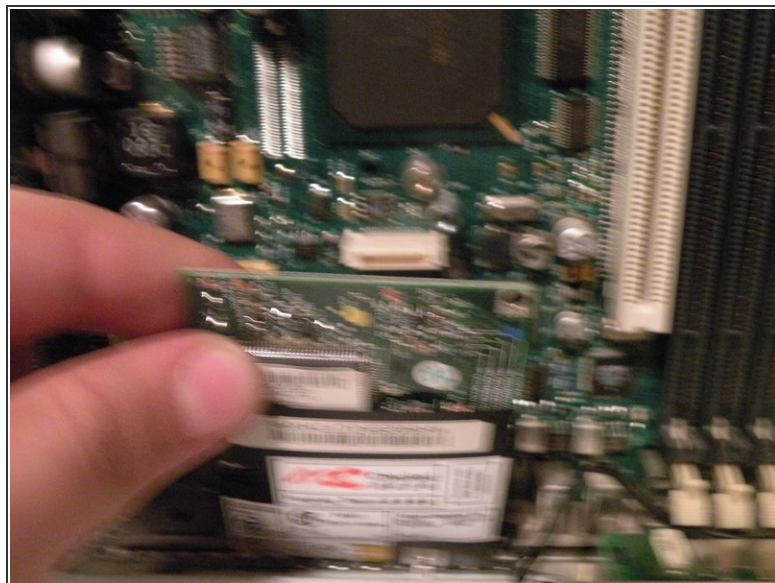
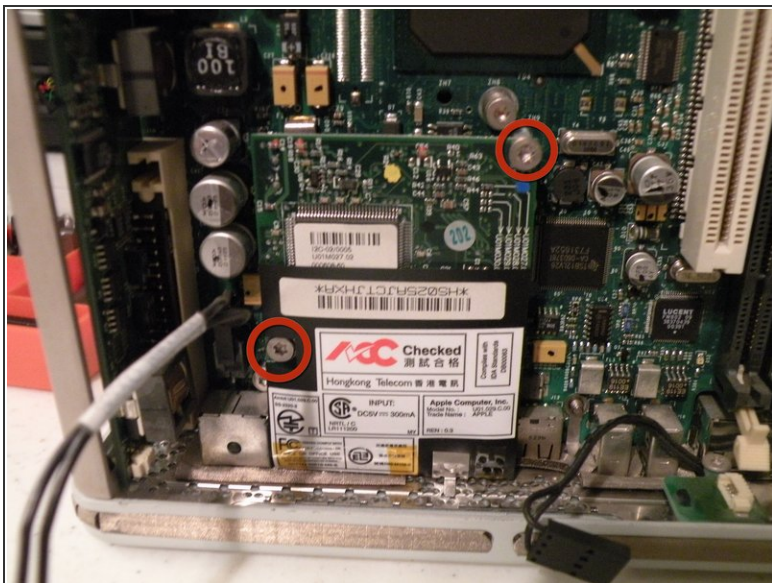
- Now to free the card, pull this tab towards you and with some persuasion, the card should come free.
- Oops! Oh well, even without the brittle plastic tab, the card isn't going anywhere.
- Then, remove the card and set it aside.

Step 9



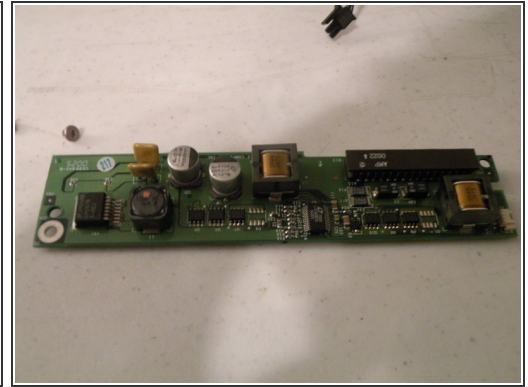
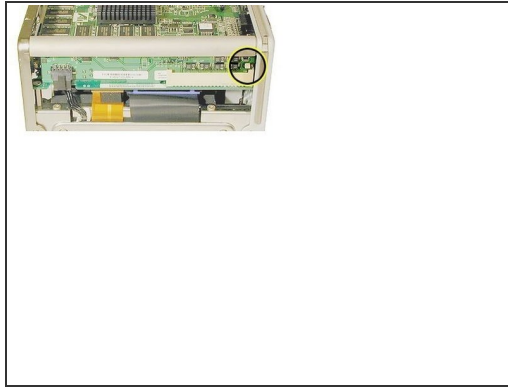
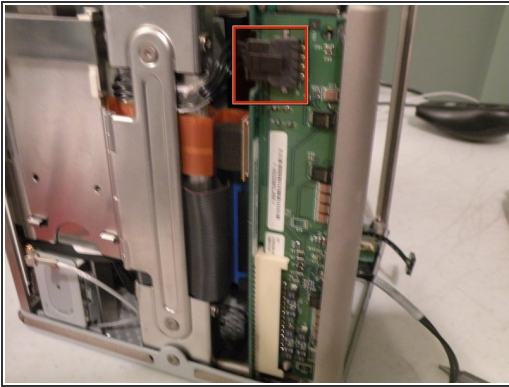
- Removing the AGP Riser card
- Pull the card out of the PCI Socket, and no, unfortunately, you can't use this to put an AGP card in a PCI slot in a PC.
- Once the card is free, mind the 3 cables attached to it, remove these 2 cables first.
- The third cable is glued to the AGP board, unplug it from the logic board instead.

Step 10



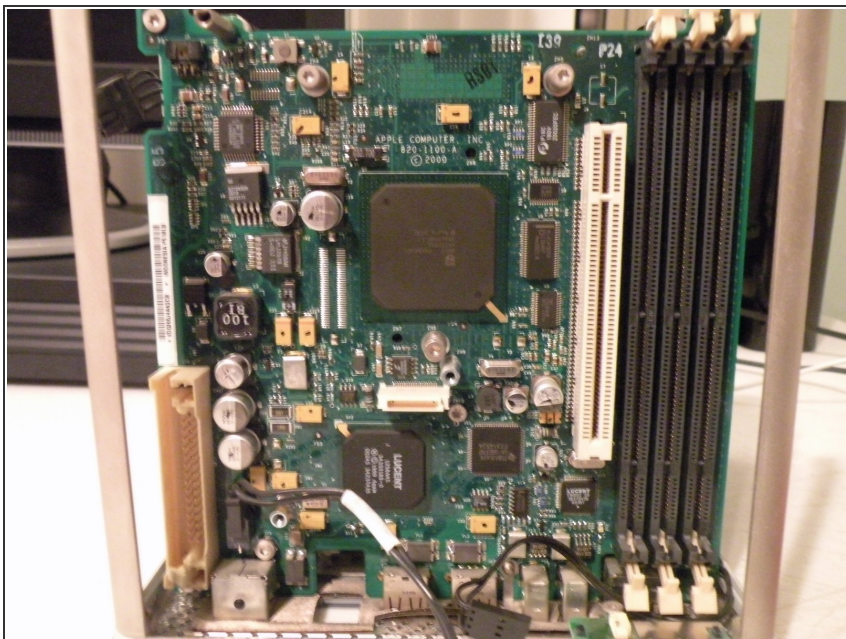
- Removing the 56K Modem
- Remove the 2 T10 Torx Screws
- Then, pull the 56k modem out, there is a socket on the back of it, so be careful!

Step 11



- Removing the Voltage Regulator Module.
- This board is called the DC/DC board, or the Voltage Regulator Module. It takes the power from the power brick and regulates the power to different components of the Cube.
- First, disconnect the power connector.
- Then release the white clip on the connector socket, which is accessed from the side of the core.
- With a little persuasion, the board comes out of it's socket(it's hard to show how the board comes out, but in person, it's pretty self explanatory)

Step 12



- The Logic Board
- Unfortunately, this as far as I am going to dissect my cube, partially because I still use it frequently, but here is an overview of the cube.
- 450Mhz or 500Mhz PowerPC G4 Processor
- Shipped with 64MB ram, supports up to 1.5GB of PC100 or PC133
- One PCI Slot(Converted to AGP via adaptor)
- No Onboard Audio.(Unfortunately)

To reassemble your device, follow these instructions in reverse order.