



Nintendo Entertainment System Disassembly

Disassembly of the NES. Use this guide to learn how to open the system and replace items such as the 72-pin connector, controller ports/buttons, & plastics.

Written By: Joe Shacar



INTRODUCTION

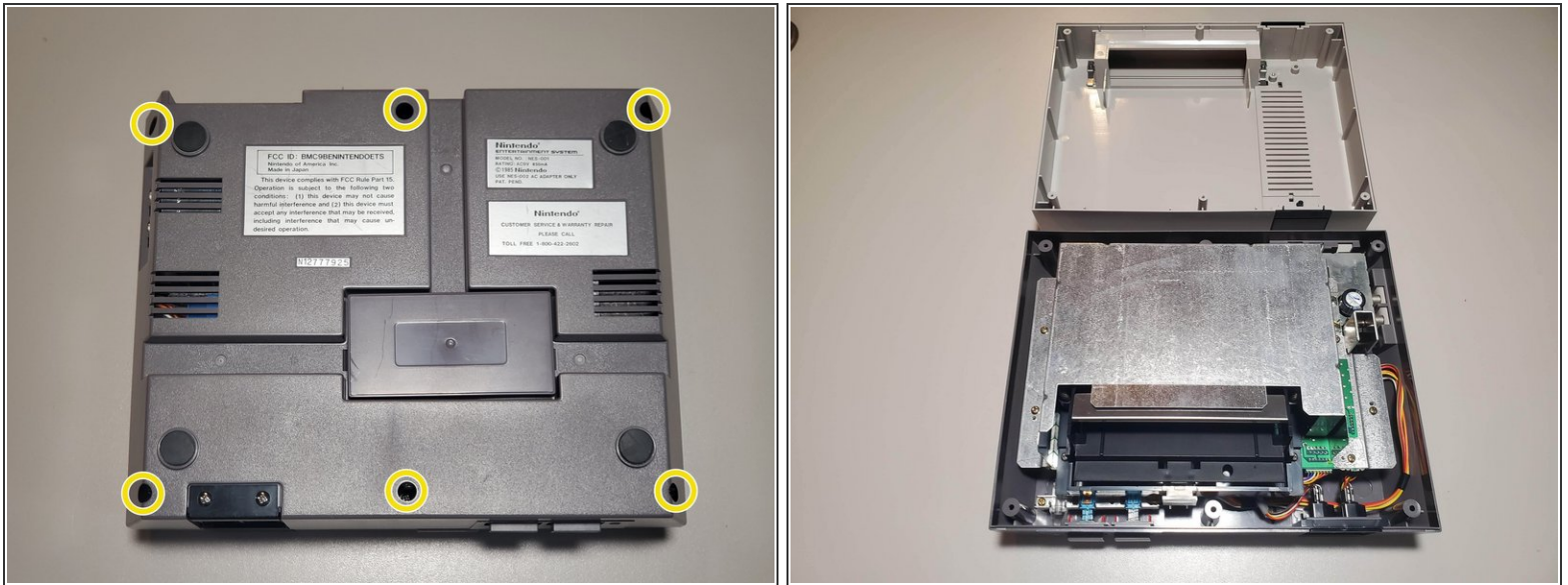
Disassembly of the NES. Use this guide to learn how to open the system and replace items such as the 72-pin connector, controller ports/buttons, & plastics.



TOOLS:

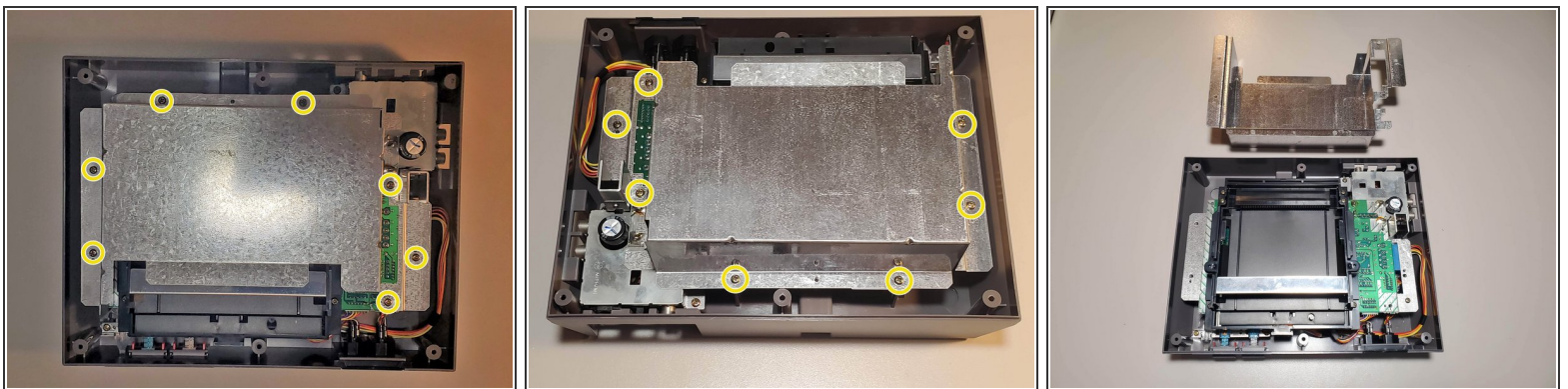
- [Phillips #2 Screwdriver](#) (1)
 - [Flathead 3/32" or 2.5 mm Screwdriver](#) (1)
-

Step 1 — Remove Top Housing



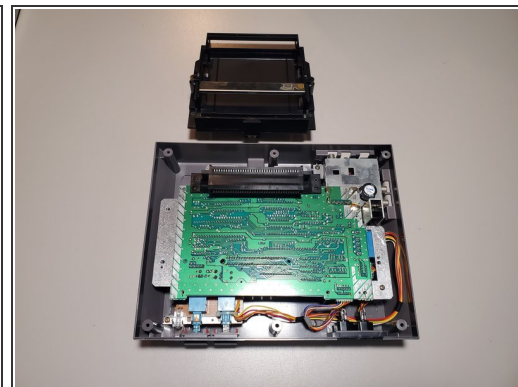
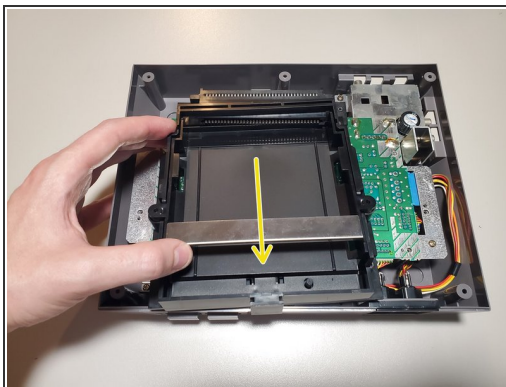
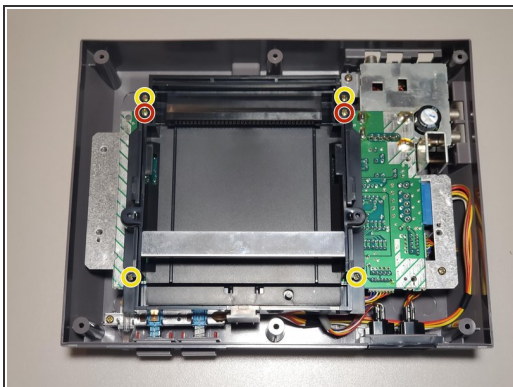
- Remove six **13.25mm Phillips screws** on the bottom of the system.
- ⓘ *The screws are recessed about 40mm.*
- Once all screws are removed, simply lift the bottom half away from the top housing.

Step 2 — Remove Top RF Shield



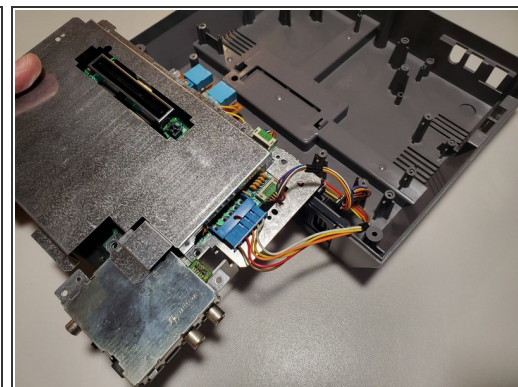
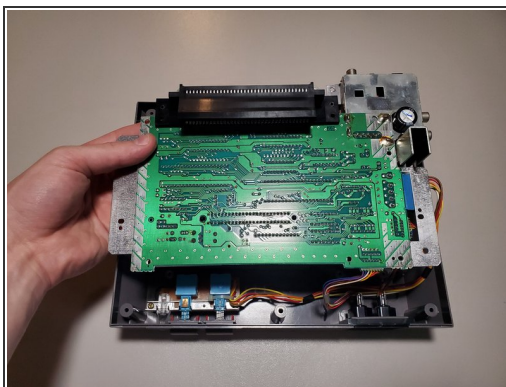
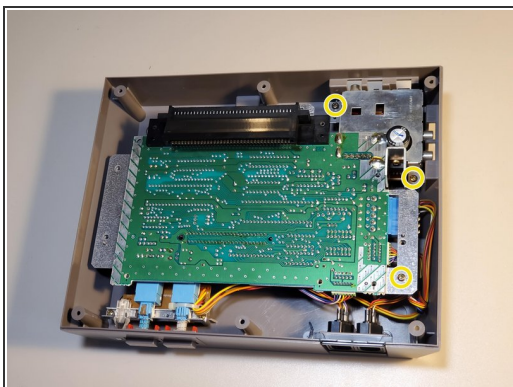
- Remove seven **13.25mm Phillips screws** around the perimeter of the RF shield.
- Lift the RF shield up and away from the system and place aside.

Step 3 — Remove Cartridge Tray



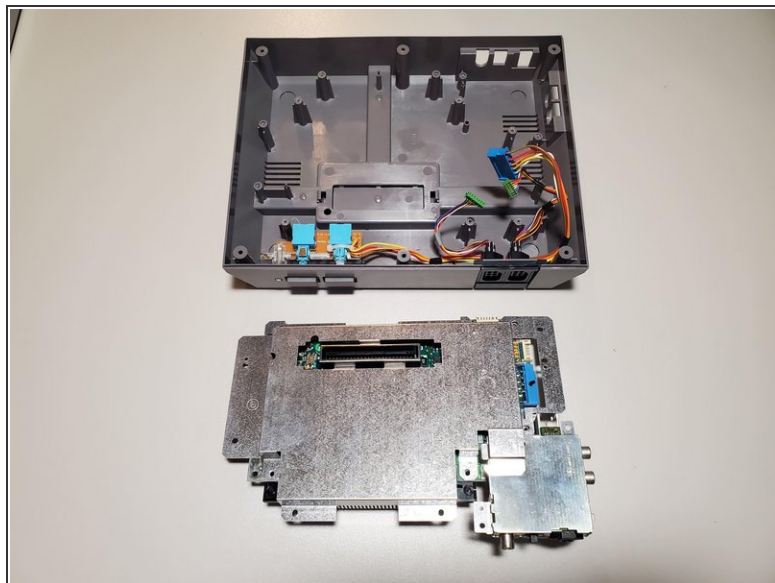
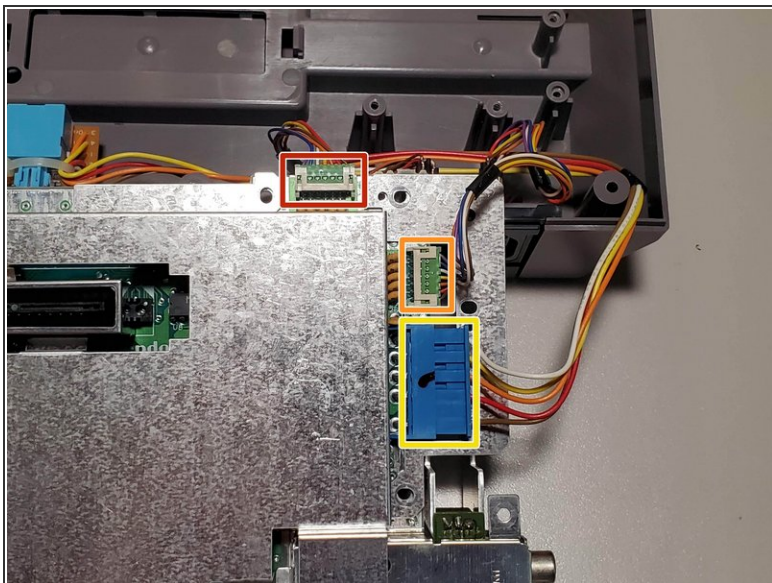
- Remove four **13.25mm Phillips screws** from the four corners of the cartridge tray.
 - ❗ *Your system may only have two screws on the bottom*
- Remove two **17.25mm Phillips screws** from the top of cartridge tray.
- Once free, slide the cartridge tray towards you and then lift slightly in the front to remove.

Step 4 — Remove Motherboard Pt. 1



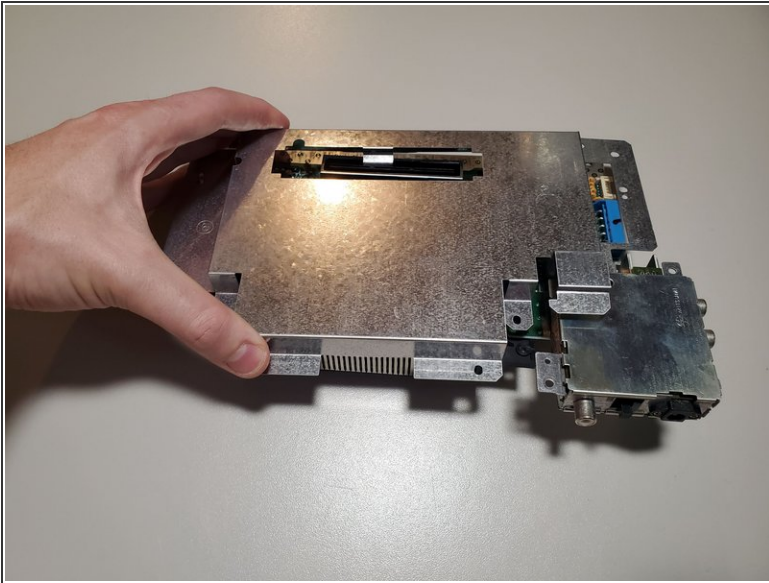
- Remove three **13.25mm Phillips screws** to free the motherboard from the bottom housing.
- Carefully lift the motherboard and turn it over to find the wired connections.

Step 5 — Remove Motherboard Pt. 2



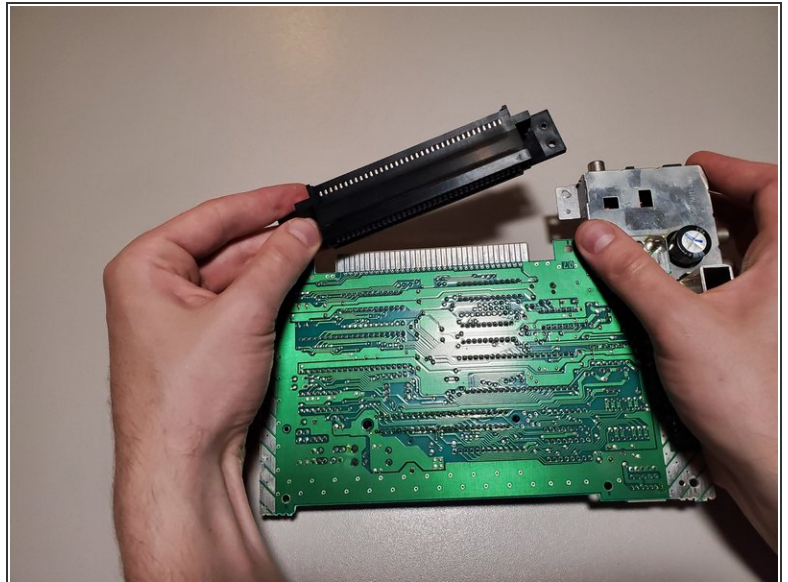
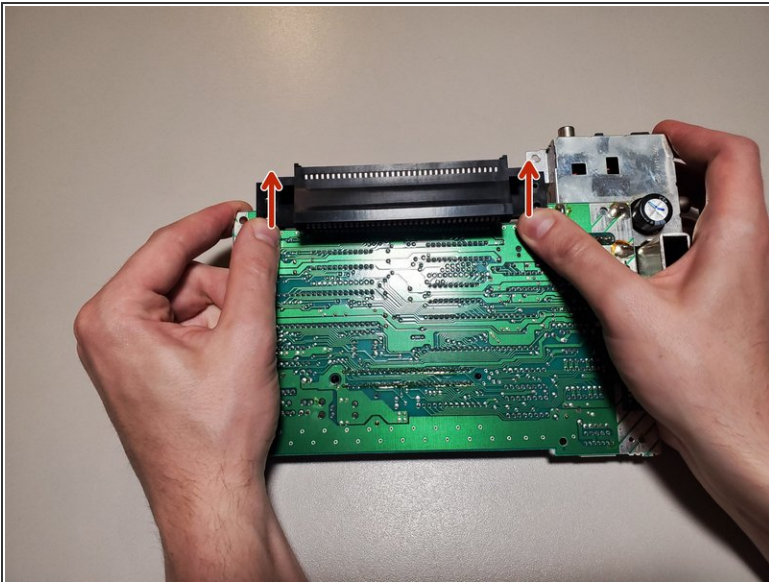
- Disconnect the wired connections from the motherboard.
 - **Player 1** (Shorter wires)
 - **Player 2** (Longer wires)
 - **Power/Reset Buttons**

Step 6 — Remove Bottom RF Shield



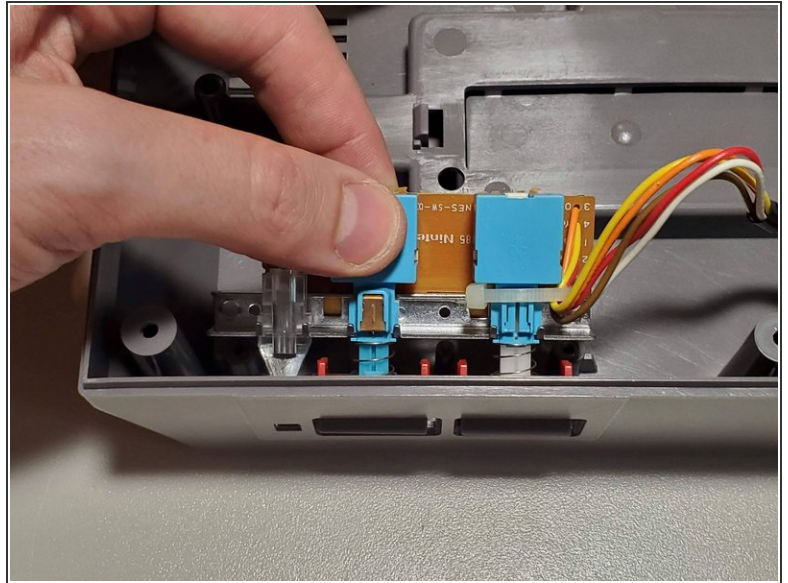
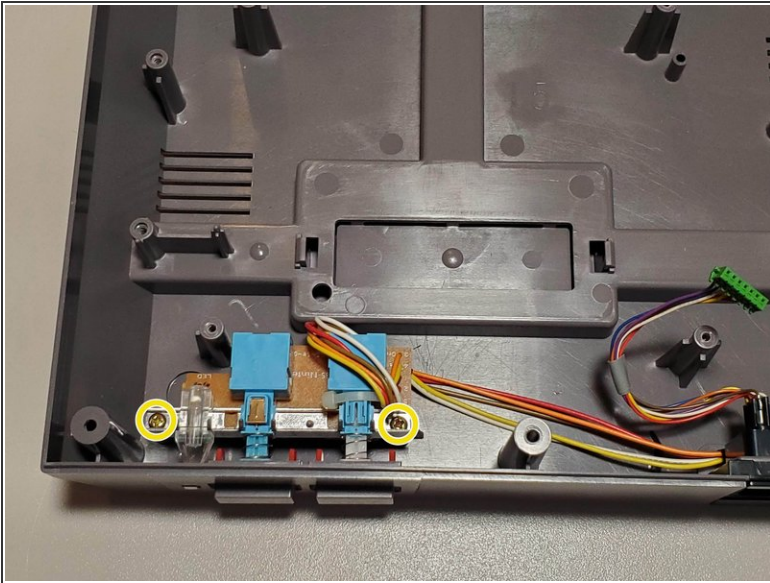
- The bottom RF shield is held on by tension around the expansion port. Lift the shield up and away from the motherboard.

Step 7 — Remove 72-Pin Connector



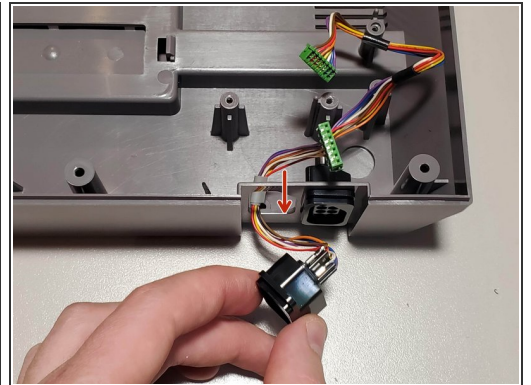
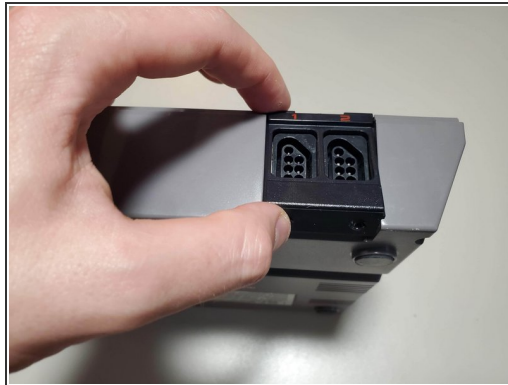
- To remove the 72-Pin connector, apply force to each edge and slide the connector off the contacts on the motherboard.

Step 8 — Remove Power/Reset Buttons



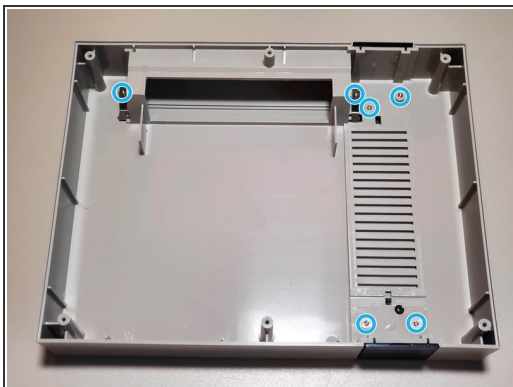
- Remove two **13.25mm Phillips screws** from the button assembly. Lift slightly in the back and then up and away from the housing to remove.

Step 9 — Remove Controller Ports



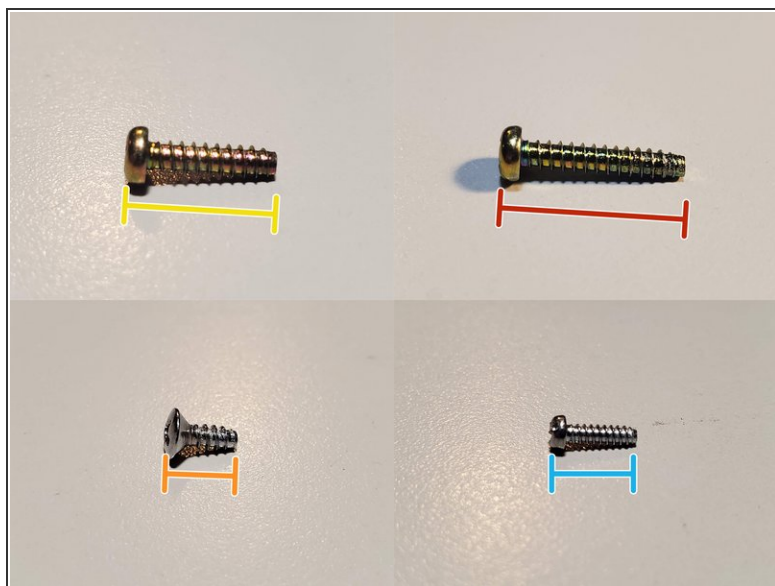
- Remove two **7.25mm Phillips screws** from the bottom of the system. Lift the controller port faceplate up and away.
 - Remove the controller ports by feeding them through the port holes to the front of the housing.
- ★ When reassembling, Player 1 (Left) has shorter wires than Player 2 (Right).

Step 10 — Remove Plastic Door and Accent Pieces



- Remove seven **7.25mm small flathead** screws from the inside of the top housing.
- Two of these screws also hold a spring for the door. When reassembling, refer to the keyed shape of the plastic to orient these correctly.

Step 11 — Disassembly Complete!



● Screw List

- (19x) **13.25mm Phillips**
- (2x) **17.25mm Phillips**
- (2x) **7.25mm Phillips** (Silver, large cap)
- (7x) **7.25mm Flathead** (Silver, small)

To reassemble your device, follow these instructions in reverse order.