



# iHome IH11 Dock Connector Replacement

This guide will show you how to properly replace the iHome docking station for your iPhone or iPod.

Written By: Nick Knowles



## INTRODUCTION

Replace the dock connector on your iHome iP11, so you can play music and charge your battery once again. For help troubleshooting click the link to our troubleshooting page [iHome IH11 Troubleshooting](#).



### TOOLS:

- [Phillips #0 Screwdriver](#) (1)



### PARTS:

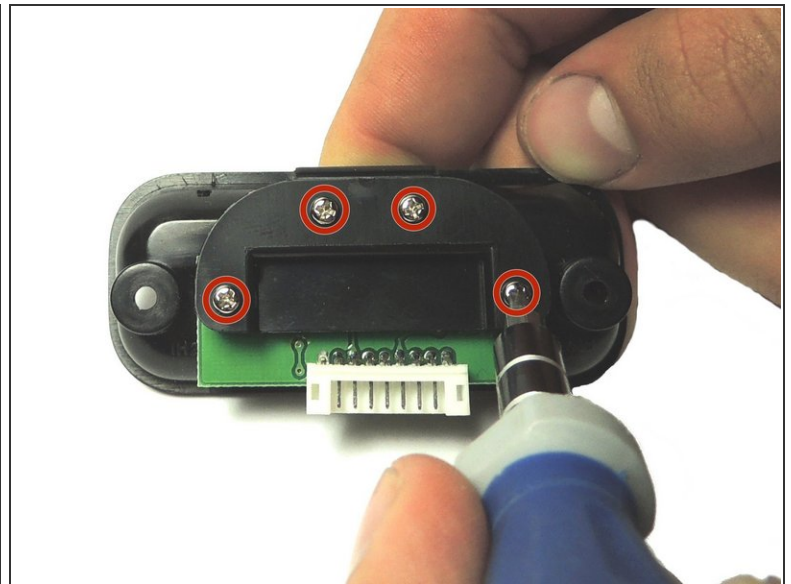
- [iHome iP11 Dock Connector](#) (1)

## Step 1 — Dock Connector



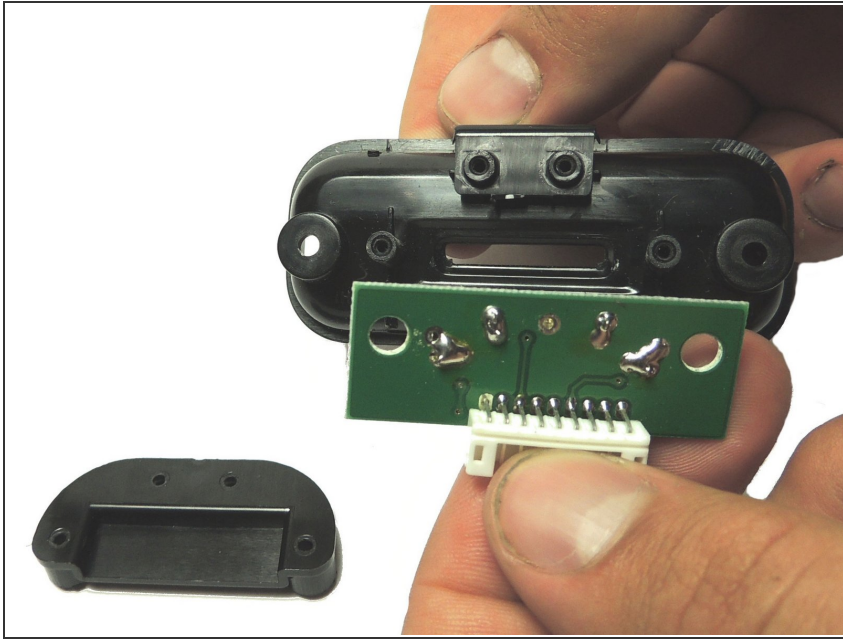
- Remove the two 9mm screws that hold on the dock connector with a Phillips #1 Screwdriver.

## Step 2



- Pop the dock connector out of the iHome and gently pull the white plastic plug connected to the dock connector apart.
- Remove the four 7.0mm screws with a Phillips #1 screwdriver.

### Step 3



- Remove both of the black plastic pieces. They should easily slide off of the two guide holes in the circuit board.
- The dock connector should now be exposed. You can now simply put your new dock connector in the old one's place.

To reassemble your device, follow these instructions in reverse order.