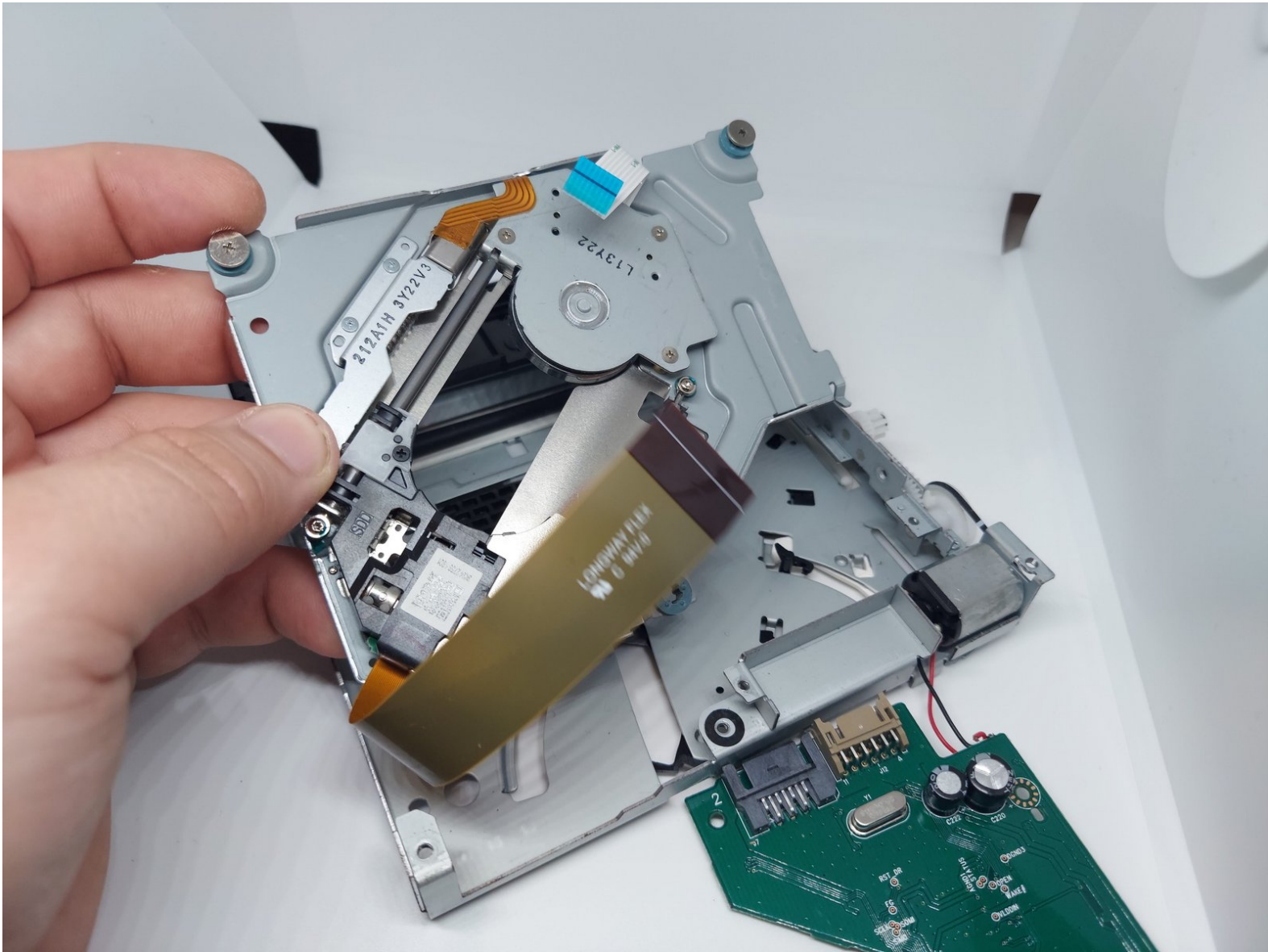




Xbox One Optical Drive Laser Replacement

Replace the optical drive laser in an Xbox One .

Written By: Austin Stein



INTRODUCTION

This guide explains how to replace the Xbox One's optical drive laser. Replacing the optical drive laser serves as a simpler solution for problems with the optical drive without the need to replace the console's paired motherboard and optical drive daughterboard.



TOOLS:

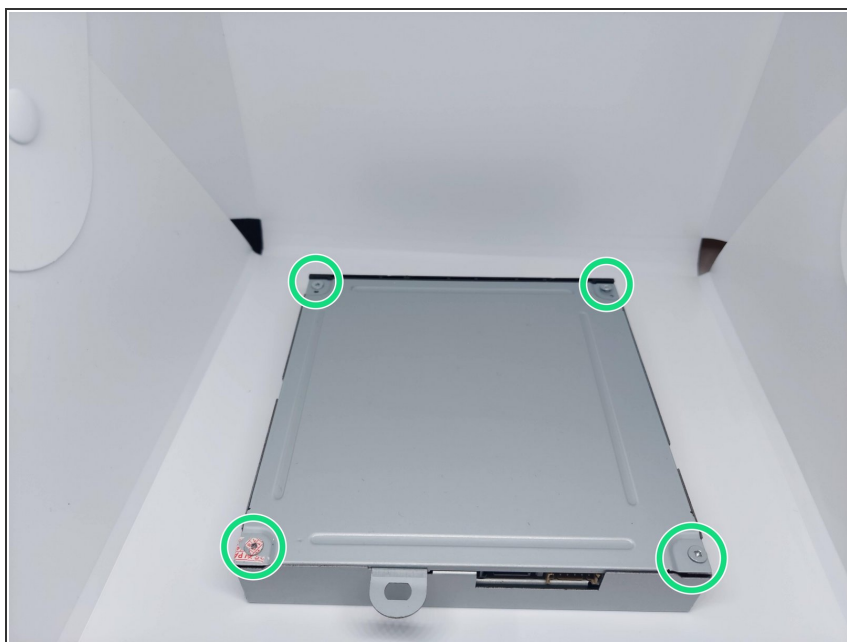
- [Phillips #1 Screwdriver](#) (1)
- [Phillips #0 Screwdriver](#) (1)
- [Tweezers](#) (1)



PARTS:

- [Xbox One Optical Drive Laser](#) (1)

Step 1 — Optical Drive Case Screws



⚠ Make sure the optical drive is not connected to any power source and is powered off.

- Unscrew the four Phillips #1 screws on the top of the optical drive.

Step 2 — Optical Drive Case Lid



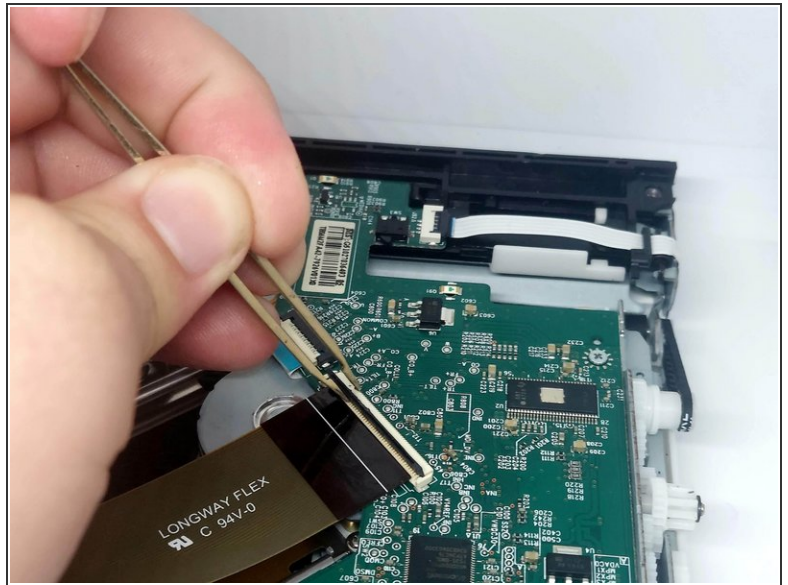
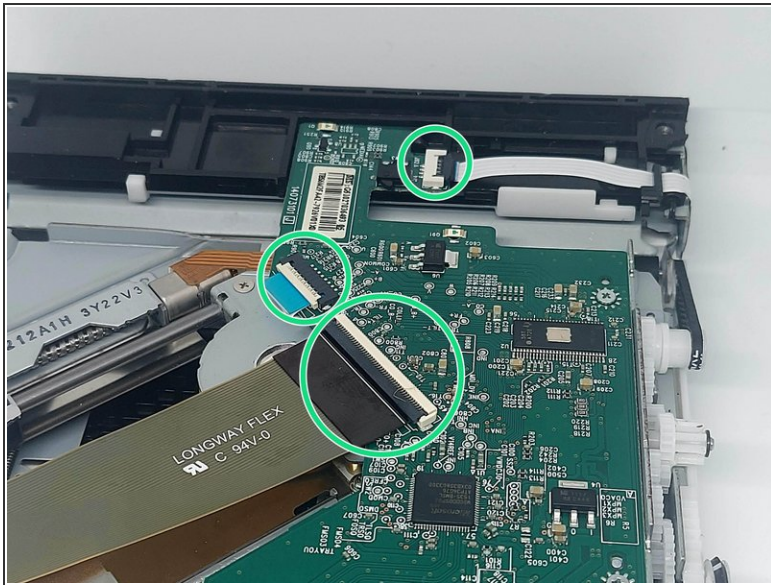
- Lift the lid off of the optical drive case, this should require little to no force.

Step 3 — Optical Drive Case



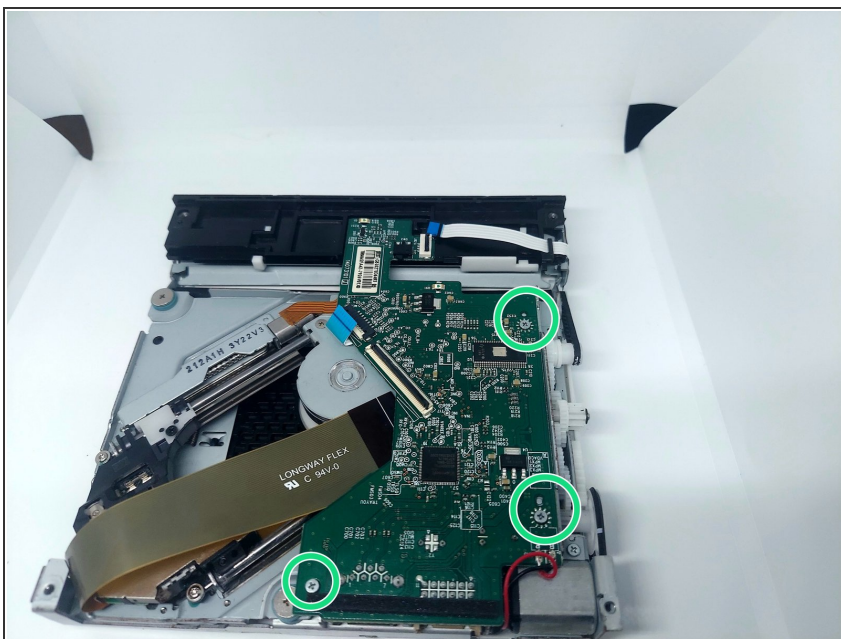
- Slide the remaining optical drive case off of the internal components.
- Internal components often snag on these points when removing the optical drive case.

Step 4 — ZIF Connectors



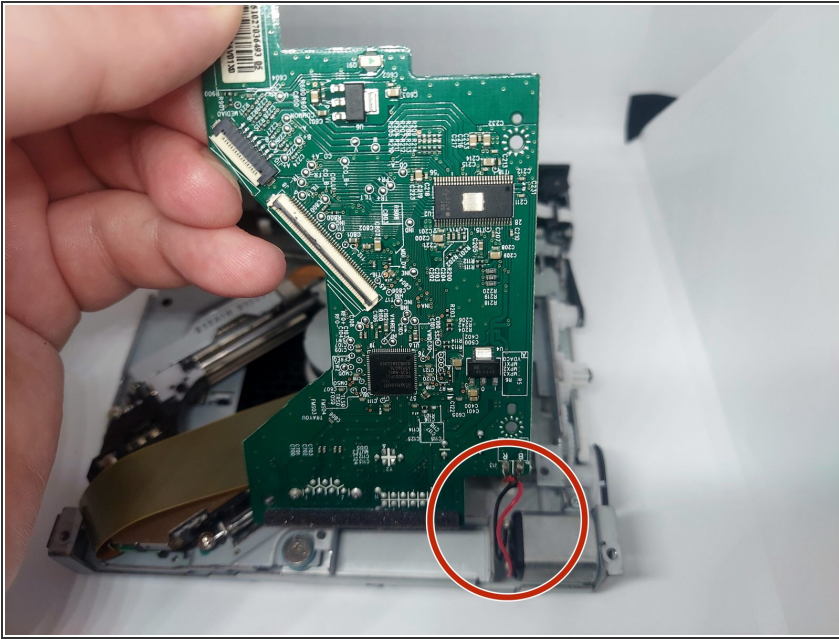
- Locate the three ZIF connectors on the optical drive PCB.
- Using tweezers, gently lift the tab on each ZIF connector to release the ribbon cables.
- Remove the ribbon cable from each ZIF connector.

Step 5 — PCB Screws



- Unscrew the three Phillips #0 screws mounting the PCB.

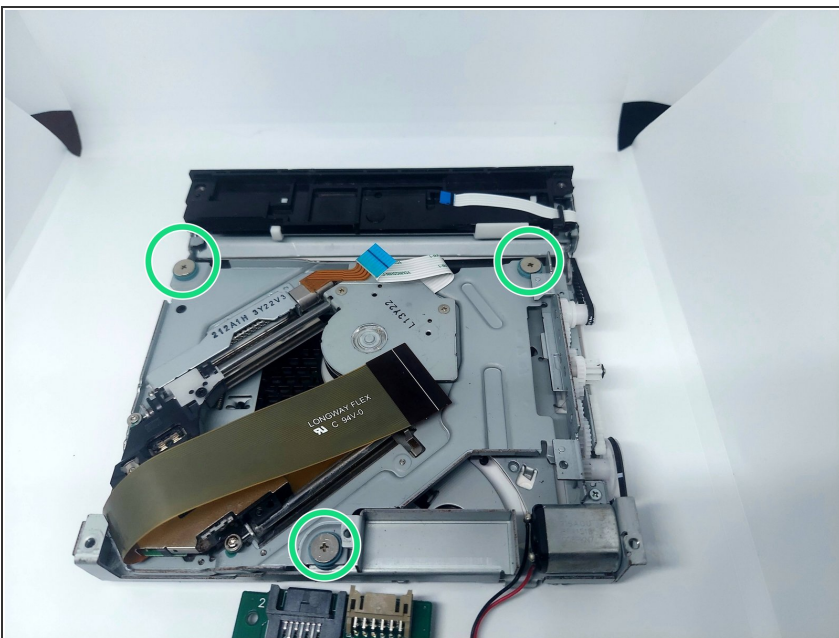
Step 6 — Moving the PCB



- Gently lift the PCB and place it to the side.

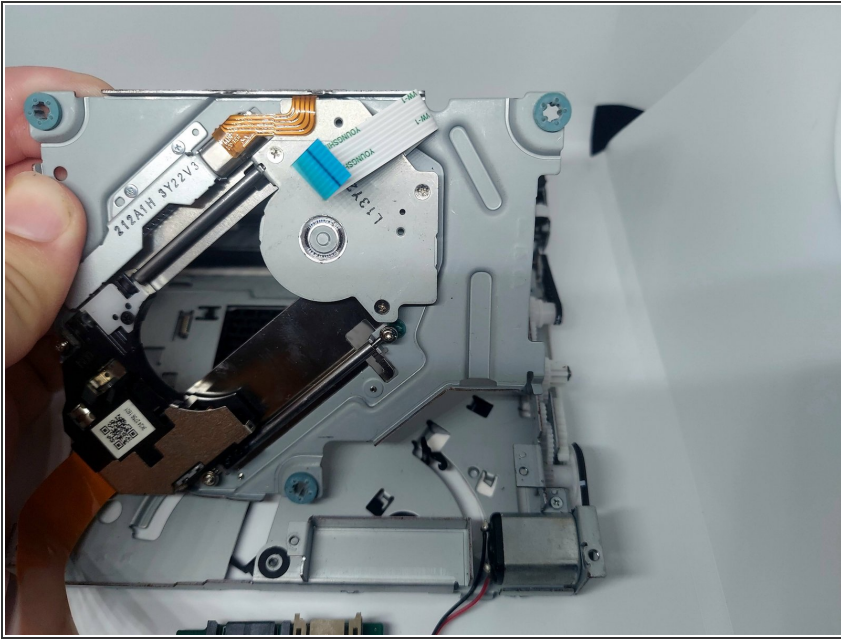
⚠ When lifting the PCB, be careful to not detach the wires connecting the PCB to the motor.

Step 7 — Optical Drive Laser Screws



- Unscrew the three Phillips #0 screws mounting the optical drive laser.

Step 8 — Optical Drive Laser



- Lift the old optical drive laser from the unit and place in the new optical drive laser.

To reassemble your device, follow these instructions in reverse order.